

Product datasheet for **RC232947**

CRMP2 (DPYSL2) (NM_001244604) Human Tagged ORF Clone

Product data:

| | |
|--------------------|---|
| Product Type: | Expression Plasmids |
| Product Name: | CRMP2 (DPYSL2) (NM_001244604) Human Tagged ORF Clone |
| Tag: | Myc-DDK |
| Symbol: | DPYSL2 |
| Synonyms: | CRMP-2; CRMP2; DHPRP2; DRP-2; DRP2; N2A3; ULIP-2; ULIP2 |
| Vector: | pCMV6-Entry (PS100001) |
| E. coli Selection: | Kanamycin (25 ug/mL) |
| Cell Selection: | Neomycin |



[View online »](#)

ORF Nucleotide Sequence:

>RC232947 representing NM_001244604
 Red=Cloning site Blue=ORF Green=Tags(s)

TTTTGTAATACGACTCACTATAGGGCGGCCGGAATTCGTCGACTGGATCCGGTACCGAGGAGATCTGCC
 GCC**GCGATCGCC**

ATGGAAGATGGGTTGATCAAGCAATAGGAGAAAATCTGATTGTGCCAGGAGAGTGAAGACCATCGAGG
 CCCACTCCGGATGGTGATCCCCGGAGGAATTGACGTCCACACTCGTTTCCAGATGCCTGATCAGGGAAT
 GACGTCTGCTGATGATTTCTTCCAAGGAACCAAGCGGCCCTGGCTGGGGGAACCACTATGATCATTGAC
 CACGTTGTTCTGAGCCTGGGACAAGCCTGCTCGCTGCCTTTGACCAGTGGAGGGAATGGGCCGACAGCA
 AGTCTGCTGTGACTACTCTCTGCATGTGGACATCAGTGAGTGGCATAAGGGCATCCAGGAGGAGATGGA
 AGCGCTTGTGAAGGATCACGGGGTAAATTCCTTCTCGTGTACATGGCTTCAAAGATCGCTTCCAGCTA
 ACGGATTGCCAGATTTATGAAGTACTGAGTGTGATCCGGGATATTGGCGCCATAGCCAAGTCCACGACG
 AAAATGGCGACATCATTGCAGAGGAGCAGCAGAGGATCCTGGATCTGGGCATCACGGGCCCGAGGGACA
 TGTGCTGAGCCGACCTGAGGAGGTGAGGCCGAAGCCGTGAATCGTGCCATCACCATCGCCAACCCAGACC
 AACTGCCCGCTGTATATACCAAGGTGATGAGCAAAAGCTCTGCTGAGGTTCATCGCCAGGCACGGAAGA
 AGGGAAGTGTGGTGTATGGCGAGCCATCACTGCCAGCTTGGGAACGGACGGCTCCCATTACTGGAGCAA
 GAACTGGGCCAAGGCTGCTGCCTTTGTACCTCCCAACCTTGTAGCCCTGATCCAACCACTCCAGACTTT
 CTCAACTCCTTGTCTGTCTGTGGAGACCTCCAGGTACGGGCAGTGGCCATTGCACGTTTAACTGCCC
 AGAAGGCTGTAGGAAAGGACAACCTCACCTGATCCGGAGGGCACCATGGCACTGAGGAGCGGATGTC
 CGTCATCTGGGACAAGGCTGTGGTCACTGGGAAGATGGATGAGAACCAGTTTGTGGCTGTGACAGCACC
 AATGCAGCCAAAGTCTTCAACCTTACCCCGGAAAGGCCGATTGCTGTGGGATCCGATGCCGACCTGG
 TCATCTGGGACCCCGACAGCGTTAAAACCATCTCTGCCAAGACACACAACAGCTCTCTCGAGTACAACAT
 CTTTGAAGGCATGGAGTGCCGCGGCTCCCACTGGTGGTTCATCAGCCAGGGGAAGATTGTCTGGAGGAC
 GGCACCCTGCATGTCACCGAAGGCTCTGGACGCTACATTCGCCGAAGCCCTTCCCTGATTTTGTTTACA
 AGCGTATCAAGGCAAGGAGCAGGCTGGCTGAGCTGAGAGGGGTTCTCGTGGCCTGTATGACGGACCTGT
 GTGTGAAGTGTCTGTGACGCCAAGACAGTCACTCCAGCCTCCTCGGCCAAGACGCTCCTGCCAAGCAG
 CAGGCCCCACCTGTCCGGAACCTGCACCAGTCTGGATTAGTTTGTCTGGTGTCTCAGATTGATGACAACA
 TCCCCCGCCACCACCAGCGTATCGTGGCGCCCCCGGTGGCCGTGCCAACATCACCAGCCTGGGC

ACGCGTACGCGGCCGCTCGAGCAGAAACTCATCTCAGAAGAGGATCTGGCAGCAAATGATATCTGGATT
 ACAAGGATGACGACGATAAGGTTTAA

Protein Sequence:

>RC232947 representing NM_001244604
 Red=Cloning site Green=Tags(s)

MEDGLIKQIGENLIVPGGVKTI EAHSRMVIPGGIDVHTRFQMPDQGMTSADDFQGTKAALAGGTTMIID
 HVVPEPGTSLLA AFDQREWADSKSCCDYSLHVDISEWHKGIQEEMEALVKDHGVNSFLVYMAFKDRFQL
 TDCQIYEVLSVIRDIGAI AQVHAENGDI AEEQQRILDLGITGPEGHVLSRPEEVEAEAVNRAITIANQT
 NCPLYITKVMKSSAEVIAQARKKGTVVYGEPI TASLGTDGSHYWSKNWAKAAAFVTSPLSPDPTTPDF
 LNSLSCGDLQVTGSAHCTFNTAQKAVGKDNFTLIPEGTNGTEERMSVIWDKAVVTGKMDENQFVAVTST
 NAAKVFNL YPRKGRIAVGSDADLVIWDPDSVKTI SAKTHNSSLEYNIFEGMECRGSPLVVISQGKIVLED
 GTLHVTEGSGRYIPRKPFDFVYKRIKARSRLAELRGVPRGLYDGPVCEVSVTPKVTVPASSAKTSPAKQ
 QAPPVRLHQSGFSLSGAQIDDNIPRRTTQRIVAPPGGRANITSLG

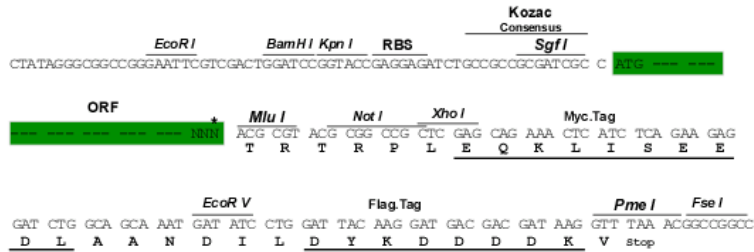
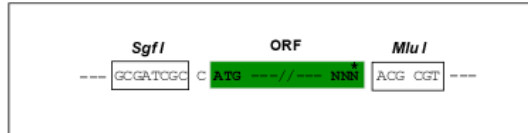
TRTRPLEQKLISEEDLAANDILDYKDDDDKV

Restriction Sites:

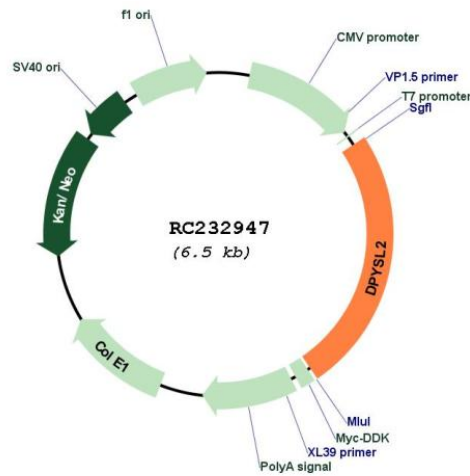
Sgfl-MluI

Cloning Scheme:

Cloning sites used for ORF Shutting:



* The last codon before the Stop codon of the ORF

Plasmid Map:


| | |
|-------------------------------|--|
| ACCN: | NM_001244604 |
| ORF Size: | 1608 bp |
| OTI Disclaimer: | The molecular sequence of this clone aligns with the gene accession number as a point of reference only. However, individual transcript sequences of the same gene can differ through naturally occurring variations (e.g. polymorphisms), each with its own valid existence. This clone is substantially in agreement with the reference, but a complete review of all prevailing variants is recommended prior to use. More info |
| OTI Annotation: | This clone was engineered to express the complete ORF with an expression tag. Expression varies depending on the nature of the gene. |
| Components: | The ORF clone is ion-exchange column purified and shipped in a 2D barcoded Matrix tube containing 10ug of transfection-ready, dried plasmid DNA (reconstitute with 100 ul of water). |
| Reconstitution Method: | <ol style="list-style-type: none">1. Centrifuge at 5,000xg for 5min.2. Carefully open the tube and add 100ul of sterile water to dissolve the DNA.3. Close the tube and incubate for 10 minutes at room temperature.4. Briefly vortex the tube and then do a quick spin (less than 5000xg) to concentrate the liquid at the bottom.5. Store the suspended plasmid at -20°C. The DNA is stable for at least one year from date of shipping when stored at -20°C. |
| RefSeq: | NM_001244604.2 |
| RefSeq Size: | 4297 bp |
| RefSeq ORF: | 1611 bp |
| Locus ID: | 1808 |
| UniProt ID: | Q16555 |
| Cytogenetics: | 8p21.2 |
| Protein Families: | Druggable Genome |
| Protein Pathways: | Axon guidance |
| MW: | 58.6 kDa |
| Gene Summary: | This gene encodes a member of the collapsin response mediator protein family. Collapsin response mediator proteins form homo- and hetero-tetramers and facilitate neuron guidance, growth and polarity. The encoded protein promotes microtubule assembly and is required for Sema3A-mediated growth cone collapse, and also plays a role in synaptic signaling through interactions with calcium channels. This gene has been implicated in multiple neurological disorders, and hyperphosphorylation of the encoded protein may play a key role in the development of Alzheimer's disease. Alternatively spliced transcript variants encoding multiple isoforms have been observed for this gene. [provided by RefSeq, Sep 2011] |