

Product datasheet for **RC232943**

Endothelin B Receptor (EDNRB) (NM_001201397) Human Tagged ORF Clone

Product data:

Product Type:	Expression Plasmids
Product Name:	Endothelin B Receptor (EDNRB) (NM_001201397) Human Tagged ORF Clone
Tag:	Myc-DDK
Symbol:	EDNRB
Synonyms:	ABCDS; ET-B; ET-BR; ETB; ETB1; ETBR; ETRB; HSCR; HSCR2; WS4A
Vector:	pCMV6-Entry (PS100001)
E. coli Selection:	Kanamycin (25 ug/mL)
Cell Selection:	Neomycin



[View online »](#)

ORF Nucleotide Sequence:

>RC232943 representing NM_001201397
 Red=Cloning site Blue=ORF Green=Tags(s)

TTTTGTAATACGACTCACTATAGGGCGGCCGGAATTCGTCGACTGGATCCGGTACCGAGGAGATCTGCC
 GCCGCGATCGCC

ATGAATAAAAGTACTTGTCTGATGGCAGCAGAGACCCCGAGCAAACGGTGGAGGCTACACTGTCTGGCAT
 TCTCGCAGCGTTTCGTCAGAGCCGACCCGCTGCAGCTCAAGGGAGGCGTGCTCCTCTCCAGAGCAGG
 CTGGAACCCAGCTGGTTCCGCCTCCCGGGAAGGTGGTCTCCATTCGTCGCTCTGCATCTGGTTTGTGAG
 ATCCGAGAGGCTCTGAACTGCGGAGCGGCCACCGGACGCCTTCTGGAGCAGGTAGCAGCATGCAGCCGC
 CTCCAAGTCTGTGCGGACGCGCCCTGGTTGCGCTGGTTCTTGCCTGCGGCCTGTGCGGATCTGGGGAGA
 GGAGAGAGGCTTCCGCCTGACAGGGCCACTCCGCTTTTGCAAACCGCAGAGATAATGACGCCACCCACT
 AAGACCTATGGCCAAGGGTTCAACGCCAGTCTGGCGCGGTCGTTGGCACCTGCGGAGGTGCCTAAAG
 GAGACAGGACGGCAGGATCTCCGCCACGCACCATCTCCCTCCCCGTGCCAAGGACCCATCGAGATCAA
 GGAGACTTCAAATACATCAACACGGTTGTGTCCTGCCTTGTGTTGTCGTGGGGATCATCGGGAATCC
 ACACTTCTGAGAATTATCTACAAGAACAAGTGCATGCGAAACGGTCCCAATATCTTGATCGCCAGCTTGG
 CTCTGGGAGACCTGCTGCACATCGTCATTGACATCCCTATCAATGTCTACAAGCTGCTGGCAGAGGACTG
 GCCATTTGGAGCTGAGATGTGTAAGCTGGTGCCTTTCATACAGAAAGCCTCCGTGGGAATCACTGTGCTG
 AGTCTATGTGCTCTGAGTATTGACAGATATCGAGCTGTTGCTTCTGGAGTAGAATTAAGGAATGGGG
 TTCCAAAATGGACAGCAGTAGAAATTGTTTTGATTTGGTGGTCTCTGTGGTTCTGGCTGTCCCTGAAGC
 CATAGGTTTTGATATAATTACGATGGACTACAAAGGAAGTTATCTGCGAATCTGCTTGCATCCCGTT
 CAGAAGACAGCTTTCATGCAGTTTTACAAGACAGCAAAAGATTGGTGGCTATTCAGTTTCTATTTCTGCT
 TGCCATTTGGCCATCACTGCATTTTTTATACACTAATGACCTGTGAAATGTTGAGAAAAGAAATGGCAT
 GCAGATTGCTTTAAATGATCACCTAAAGCAGAGACGGGAAGTGGCCAAAACCGTCTTTTGCCTGGCTT
 GTCTTTGCCCTCTGCTGGCTTCCCTTACCTCAGCAGGATTCTGAAGCTCACTTTTATAATCAGAATG
 ATCCCAATAGATGTAACCTTTTGGCTTCTGTTGGTATTGGACTATATTGGTATCAACATGGCTTCACT
 GAATTCCTGCATTAACCCAATTGCTCTGTATTTGGTGAGCAAAAGATTCAAAAAGCTTTAAGTCATGC
 TTATGCTGCTGGTGCCAGTCATTTGAAGAAAAACAGTCTTGGAGAAAAGCAGTCGTGCTTAAAGTTCA
 AAGCTAATGATCACGGATATGACAACCTCCGTTCCAGTAATAAATACAGCTCATCT

ACGCGTACGCGGCCGCTCGAGCAGAAACTCATCTCAGAAGAGGATCTGGCAGCAAATGATATCTGGATT
 ACAAGGATGACGACGATAAGGTTTAA

Protein Sequence:

>RC232943 representing NM_001201397
 Red=Cloning site Green=Tags(s)

MNKSTCLMAAETPSKRWRLHCLAFSQRVVRAGPACSSREACSSPRAGWNPAGFRLPGRWSPFVALHLVCQ
 IREALKLRSGHRTPSGAGSSMQPPPSLCGRALVALVLACGLSRIWGEERGFPPDRATPLLQTAEIMTPPT
 KTLWPKGSNASLARSLAPAEVPGDRTAGSPPTISPPPCQGPPIKETFKYINTVVVSLVFLGIIIGNS
 TLLRIIYKNKCMRNGPNILIASLALGDLLHIVIDIPINVYKLLAEDWPFGAEMCKLVFPIQKASVGIIVL
 SLCALSIDRYRAVASWSRIKIGVPKWAVEIVLIWVVSVVLAVPEAIGFDIITMDYKGSYLRICLLHPV
 QKTAFMQFYKTAKDWWLFSFYFCLPLAITAFFYTLMTCEMLRKKSGMQIALNDHLKQRREVAKTVFCLVL
 VFALCWLPLHLSRILKLTLYNQNDPNRCELLSFLLVLDYIGINMASLNSCINPIALYLVSKRFKNCFKSC
 LCCWCQSFEKQSLEEKQSCLKFKANDHGYDNFRSSNKYSSS

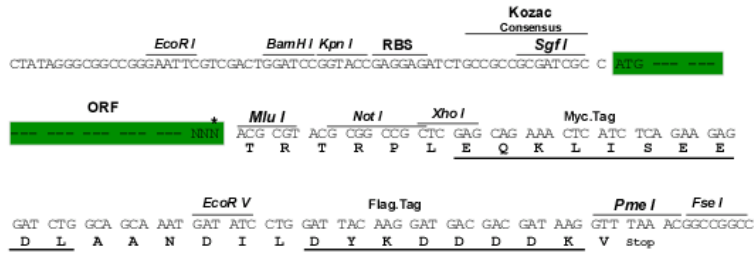
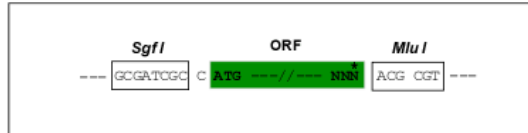
TRTRPLEQKLISEEDLAANDILDYKDDDDKV

Restriction Sites:

Sgfl-MluI

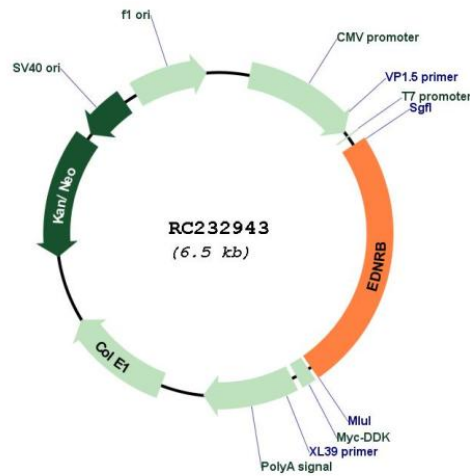
Cloning Scheme:

Cloning sites used for ORF Shutting:



* The last codon before the Stop codon of the ORF

Plasmid Map:



ACCN:	NM_001201397
ORF Size:	1596 bp
OTI Disclaimer:	<p>Due to the inherent nature of this plasmid, standard methods to replicate additional amounts of DNA in E. coli are highly likely to result in mutations and/or rearrangements. Therefore, OriGene does not guarantee the capability to replicate this plasmid DNA. Additional amounts of DNA can be purchased from OriGene with batch-specific, full-sequence verification at a reduced cost. Please contact our customer care team at custsupport@origene.com or by calling 301.340.3188 option 3 for pricing and delivery.</p> <p>The molecular sequence of this clone aligns with the gene accession number as a point of reference only. However, individual transcript sequences of the same gene can differ through naturally occurring variations (e.g. polymorphisms), each with its own valid existence. This clone is substantially in agreement with the reference, but a complete review of all prevailing variants is recommended prior to use. More info</p>
OTI Annotation:	This clone was engineered to express the complete ORF with an expression tag. Expression varies depending on the nature of the gene.
Components:	The ORF clone is ion-exchange column purified and shipped in a 2D barcoded Matrix tube containing 10ug of transfection-ready, dried plasmid DNA (reconstitute with 100 ul of water).
Reconstitution Method:	<ol style="list-style-type: none"> 1. Centrifuge at 5,000xg for 5min. 2. Carefully open the tube and add 100ul of sterile water to dissolve the DNA. 3. Close the tube and incubate for 10 minutes at room temperature. 4. Briefly vortex the tube and then do a quick spin (less than 5000xg) to concentrate the liquid at the bottom. 5. Store the suspended plasmid at -20°C. The DNA is stable for at least one year from date of shipping when stored at -20°C.
RefSeq:	NM_001201397.1 , NP_001188326.1
RefSeq Size:	4485 bp
RefSeq ORF:	1599 bp
Locus ID:	1910
UniProt ID:	P24530
Cytogenetics:	13q22.3
Protein Families:	Druggable Genome, GPCR, Transmembrane
Protein Pathways:	Calcium signaling pathway, Melanogenesis, Neuroactive ligand-receptor interaction
MW:	59.9 kDa

Gene Summary:

The protein encoded by this gene is a G protein-coupled receptor which activates a phosphatidylinositol-calcium second messenger system. Its ligand, endothelin, consists of a family of three potent vasoactive peptides: ET1, ET2, and ET3. Studies suggest that the multigenic disorder, Hirschsprung disease type 2, is due to mutations in the endothelin receptor type B gene. Alternative splicing and the use of alternative promoters results in multiple transcript variants. [provided by RefSeq, Oct 2016]