

Product datasheet for **RC232903**

BS69 (ZMYND11) (NM_001202465) Human Tagged ORF Clone

Product data:

Product Type:	Expression Plasmids
Product Name:	BS69 (ZMYND11) (NM_001202465) Human Tagged ORF Clone
Tag:	Myc-DDK
Symbol:	ZMYND11
Synonyms:	BRAM1; BS69; MRD30
Vector:	pCMV6-Entry (PS100001)
E. coli Selection:	Kanamycin (25 ug/mL)
Cell Selection:	Neomycin



[View online »](#)

ORF Nucleotide Sequence:

>RC232903 representing NM_001202465
 Red=Cloning site Blue=ORF Green=Tags(s)

TTTTGTAATACGACTCACTATAGGGCGGCCGGGAATTCGTCGACTGGATCCGGTACCGAGGAGATCTGCC
 GCC**GCGATCGCC**

ATGGCACGTTTAAACAAAAGACGACAGGCGGATACAAAAGCTATCCAGCATCTTTGGGCAGCCATTGAGA
 TTATACGGAACCAAGCAGATTGCCAACATTGACCGTATTACAAAGTATATGTCTCGAGTCCACGGTAT
 GCACCCTAAAGAGACCACCCGTCAGCTGAGCTTAGCTGTGAAAGATGGTCTTATTGTGAAAACCTAAACA
 GTGGGCTGCAAAGGTTCAAAGCTGGTATTGAACAAGAAGGATATTGGTTGCCAGGAGATGAGATTAGCA
 TTAAGAAGAAGAATACAAACAAACAGGAGATGGGCACATACCTCAGATTCATTGTCTCCCGCATGAAGGA
 GAGGAAAGTGAATGAAGGAAATACCGAAGTTATGAAGAGTTCAAAGCTGATGCCCAATTGCTTCTCCAC
 AATACCGTGAATTTCTATGGAGCAGACAGTGAGCAAGCTGACATTGCGAGGATGCTATATAAAGACACAT
 GTCATGAGCTGGATGAATGCAGCTTTGCAAGAATTGCTTTTACTTGTCAAATGCTGCTCCTGACAACCTG
 GTTCTGTTATCCTTGTATACCTAATCATGAGCTGGTTTGGGCTAAAATGAAAGGTTTTGGGTTTTGGCCA
 GCCAAAGTCATGCAGAAAGAAGACAATCAAGTCGACGTTTCGCTTCTTTGGCCACCACCACAGAGGGCCT
 GGATTCCTTCTGAAAACATTCAAGATATCACAGTCAACATTCATCGGCTGCACGTGAAGCGCAGTATGGG
 TTGAAAAAGGCCTGTGATGAGCTGGAGCTGCATCAGCGTTTCTACGAGAAGGGAGATTTTGAAATCT
 AAGAATGAGGACCGAGGTGAGGAAGAGGCAGAATCCAGTATCTCCTCCACCAGTAATGAGCAGCTAAGG
 TCACTCAAGAACCAAGAGCAAAGAAAGGACGACGTAATCAAAGTGTGGAGCCAAAAAGGAAGCAAGCA
 GCCTGAAACAGAAGCAGTAAGTTCTAGCCAGGAAATACCCACGATGCCTCAGCCCATCGAAAAAGTCTCC
 GTGTCAACTCAGACAAAGAAGTTAAGTGCCTCTCACCAAGAATGCTGCATCGGAGCACCAGACCACAA
 ACGACGGCGTGTGCAGAGCATGCCCATGACAAATACACCAAGATCTTCAATGACTTCAAAGACGGGAT
 GAAGTCGGACCACAAGCGGGAGACAGAGCGTGTGTCCGAGAAGCTCTGGAGAAGCTGCGTCTGAAATG
 GAAGAAGAAAAGAGACAAGCTGTAAATAAAGCTGTAGCCAACATGCAGGGTGAGATGGACAGAAAATGTA
 AGCAAGTAAAGGAAAAGTGAAGGAAGATTTGTAGAAGAAATCAAGAAGCTGGCAACACAGCACAAAGCA
 ACTGATTTCTCAGACCAAGAAGAAGCAGTGGTGTACAACGTGAGGAGGAGGCCATGTACCCTGCTGC
 TGGAACACATCTACTGCTCCATCAAGTGCCAGCAGGAGCACTGGCACGGGAGCACAAGCGCACCTGCC
 GCCGAAAAGA

ACGCGTACGCGGCCGCTCGAGCAGAACTCATCTCAGAAGAGGATCTGGCAGCAAATGATATCCTGGATT
 ACAAGGATGACGACGATAAGGTTTAA

Protein Sequence:

>RC232903 representing NM_001202465
 Red=Cloning site Green=Tags(s)

MARLTKRRQADTKAIQHLWAAIEIIRNQQIANIDRITKYMSRVHGMHPKETTRQLSLAVKDGLIVETLT
 VGCKGSKAGIEQEGYWLPGDEISIKKKNTNKQEMGYLRFIVSRMKERKVNKGKYSYEEFKADAQLLLH
 NTVIFYGADSEQADIARMLYKDTCHELDELQLCKNCFYLSNARPDNWFYCIPNHELWAKMKGFWF
 AKVMQKEDNQVDVRFVGHHRQRAWIPSENIQDITVNIHRLHVKRSMGWKKACDELELHQRFLREGRFWKS
 KNEDRGEEEAESSISSTSNEQLKVTQEPRAKKGRRNQSVPEPKKEPEPETEAVSSSQEIPTMPQPIEKVS
 VSTQTKKLSASSPRMLHRSTQTTNDGVCQSMCHDKYTKIFNDFKDRMKS DHKRETERVVREALKLRSEM
 EEEKRQAVNKAVANMQGEMDRKCKQVKECKKEEFVEEIKKLATQHKQLISQTKKKQWCYNCEEEAMHYHC
 WNTSYCSIKCQQEHWHAEHKRTCRRKR

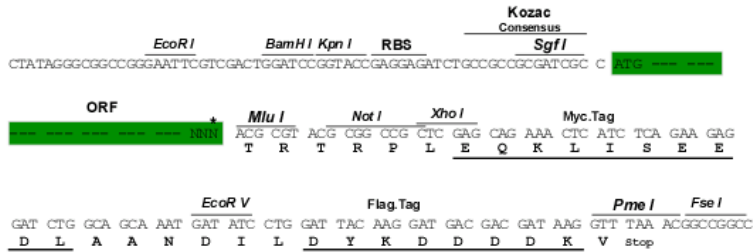
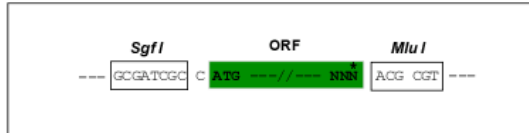
TRTRPLEQKLISEEDLAANDILDYKDDDDKV

Restriction Sites:

Sgfl-MluI

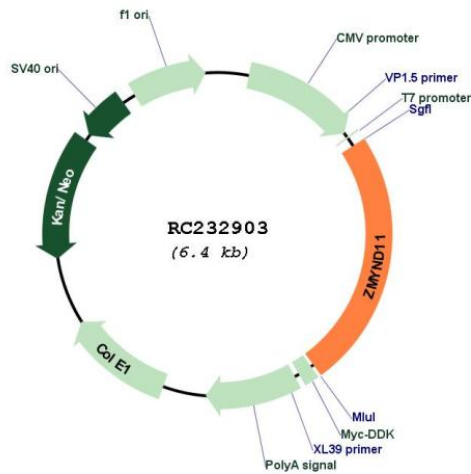
Cloning Scheme:

Cloning sites used for ORF Shutting:



* The last codon before the Stop codon of the ORF

Plasmid Map:



ACCN:	NM_001202465
ORF Size:	1551 bp
OTI Disclaimer:	The molecular sequence of this clone aligns with the gene accession number as a point of reference only. However, individual transcript sequences of the same gene can differ through naturally occurring variations (e.g. polymorphisms), each with its own valid existence. This clone is substantially in agreement with the reference, but a complete review of all prevailing variants is recommended prior to use. More info
OTI Annotation:	This clone was engineered to express the complete ORF with an expression tag. Expression varies depending on the nature of the gene.
Components:	The ORF clone is ion-exchange column purified and shipped in a 2D barcoded Matrix tube containing 10ug of transfection-ready, dried plasmid DNA (reconstitute with 100 ul of water).
Reconstitution Method:	<ol style="list-style-type: none">1. Centrifuge at 5,000xg for 5min.2. Carefully open the tube and add 100ul of sterile water to dissolve the DNA.3. Close the tube and incubate for 10 minutes at room temperature.4. Briefly vortex the tube and then do a quick spin (less than 5000xg) to concentrate the liquid at the bottom.5. Store the suspended plasmid at -20°C. The DNA is stable for at least one year from date of shipping when stored at -20°C.
RefSeq:	NM_001202465.3
RefSeq Size:	4168 bp
RefSeq ORF:	1554 bp
Locus ID:	10771
UniProt ID:	Q15326
Cytogenetics:	10p15.3
Protein Families:	Druggable Genome, Transcription Factors
MW:	61.3 kDa
Gene Summary:	The protein encoded by this gene was first identified by its ability to bind the adenovirus E1A protein. The protein localizes to the nucleus. It functions as a transcriptional repressor, and expression of E1A inhibits this repression. Alternatively spliced transcript variants encoding different isoforms have been identified. [provided by RefSeq, Jul 2008]