

Product datasheet for **RC232888**

TCF4 (NM_001243236) Human Tagged ORF Clone

Product data:

Product Type:	Expression Plasmids
Product Name:	TCF4 (NM_001243236) Human Tagged ORF Clone
Tag:	Myc-DDK
Symbol:	TCF4
Synonyms:	bHLHb19; CDG2T; E2-2; FECD3; ITF-2; ITF2; PTHS; SEF-2; SEF2; SEF2-1; SEF2-1A; SEF2-1B; SEF2-1D; TCF-4
Vector:	pCMV6-Entry (PS100001)
E. coli Selection:	Kanamycin (25 ug/mL)
Cell Selection:	Neomycin



[View online >](#)

ORF Nucleotide Sequence:

>RC232888 representing NM_001243236
 Red=Cloning site Blue=ORF Green=Tags(s)

TTTTGTAATACGACTCACTATAGGGCGGCCGGAATTCGTCGACTGGATCCGGTACCGAGGAGATCTGCC
 GCC**CGCATCGCC**

ATGAAATTTAAACAATGCAGATGCTCAGATACAGGGCTATGTTGCCTGGACCACGAAGGAAAGCAGAGG
 TCTATGCTCCATCAGCAAGCACTGCCACTACAATAGGGACTCGCCAGGCTATCCTTCTCCAAACCAGC
 AACCCAGCACTTTCCCTAGCTCCTTCTTTCATGCAAGATGGCCATCAGCAGTGACCCCTGGAGCTCTCC
 AGTGGGATGAATCAGCCTGGCTATGCAGGAATGTTGGGCAACTCTTCTCATATCCACAGTCCAGCAGCT
 ACTGTAGCCTGCATCCACATGAACGTTTGGAGCTATCCATCACACTCCTCAGCAGACATCAATCCAGTCT
 TCCTCCGATGTCCACTTCCATCGTAGTGGTACAAACCATTACAGCACCTCTTCTGTACGCTCCTGCC
 AACGGGACAGACAGTATAATGGCAAATAGAGGAAGCGGGCAGCCGCAGCTCCCAGACTGGAGATGCTC
 TGGGAAAGCACTTGCTTCGATCTATTCTCCAGATCACACTAACACAGCTTTTCATCAAACCTTCAAC
 TCCTGTTGGCTCTCTCCATCTCTCTCAGCAGGCACAGCTGTTTGGTCTAGAAATGGAGGACAGGCTCA
 TCGTCTCCTAATTATGAAGGACCCTTACACTCTTTGCAAAGCCGAATTGAAGATCGTTTAGAAAGACTGG
 ATGATGCTATTATGTTCTCCGGAACCATGCAGTGGGCCATCCACAGCTATGCCTGGTGGTTCATGGGGA
 CATGCATGGAATCATTGGACCTTCTATAATGGAGCCATGGGTGGTCTGGGCTCAGGGTATGGAACCGGC
 CTTCTTTCAGCCAACAGACATTCATCATGGTGGGACCCATCGTGAAGATGGCGTGGCCCTGAGAGGCA
 GCCATTCTTCTGCCAAACCAGGTTCCGGTCCACAGCTTCTGTCCAGTCTGCGACTTCCCCTGACCT
 GAACCCACCCAGGACCTTACAGAGGCATGCCACCAGGACTACAGGGCAGAGTGTCTCTCTGGCAGC
 TCTGAGATCAAATCCGATGACGAGGGTATGAGAACCTGCAAGACACGAAATCTCGGAGGACAAGAAAT
 TAGATGACGACAAGAAGGATATCAAATCAATTAAGCAATAATGACGATGAGGACCTGACACCAGAGCA
 GAAGGCAGAGCGTGAGAAGGAGCGGAGGATGGCCAACAATGCCCGAGAGCGTCTGCGGGTCCGTGACATC
 AACGAGGCTTTCAAGAGCTCGGCCGCATGGTGCAGCTCCACCTCAAGAGTGACAAGCCCCAGACCAAGC
 TCCTGATCCTCCACCAGGCGGTGGCCGTCATCCTCAGTCTGGAGCAGCAAGTCCGAGAAAGGAATCTGAA
 TCCGAAAGCTGCGTGTCTGAAAAGAAGGGAGGAAGAGAAGGTGTCTCAGAGCCTCCCCCTCTCTCTTG
 GCCGCCACACCCTGGAATGGGAGACGCATCGAATCACATGGGACAGATG

ACGCGTACGCGGCCGCTCGAGCAGAACTCATCTCAGAAGAGGATCTGGCAGCAAATGATATCCTGGATT
 ACAAGGATGACGACGATAAGGTTTAA

Protein Sequence:

>RC232888 representing NM_001243236
 Red=Cloning site Green=Tags(s)

MKFKQCRCSDTGLCLDHEGKAEVYAPSASTADYNRDSPGYPSSKPATSTFPSSFFMQDGHSSDPWSSS
 SGMNQPGYAGMLGNSSHIPQSSSYCSLHPHERLSYPHSSADINSLPMMSTFHRSGTNYSTSSCTPPA
 NGTDSIMANRSGAAGSSQTGDALGKALASIYSPDHTNNSFSSNPSTPVGSPPSLSAGTAVWSRNGGQAS
 SSPNYEGLHSLQSRIEDRLERLDDAIHVLNRHAVGPSTAMPGGHGMHGIIGP SHNGAMGGLGSGYGTG
 LLSANRHSLMVGTHREDGVALRGSHSLLPNQVPVQLPVQSATSPDLNPPQDPYRGMPPGLQGQSVSSGS
 SEIKSDDEGDENLQDTKSSDKKDDDKDIKISITSNDDDELTPEQKAEREKERRMANNARERLRVRDI
 NEAFKELGRMVQLHLKSDKPQTKLLILHQAVAVILSLEQQVRERLNPKAAALKRREEEKVSSEPPPLSL
 AGPHPGMGDASNHMGM

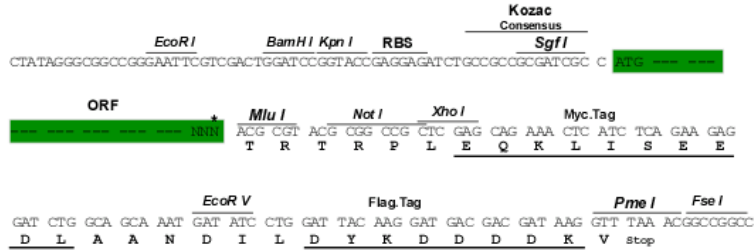
TRTRPLEQKLISEEDLAANDILDYKDDDDKV

Restriction Sites:

Sgfl-MluI

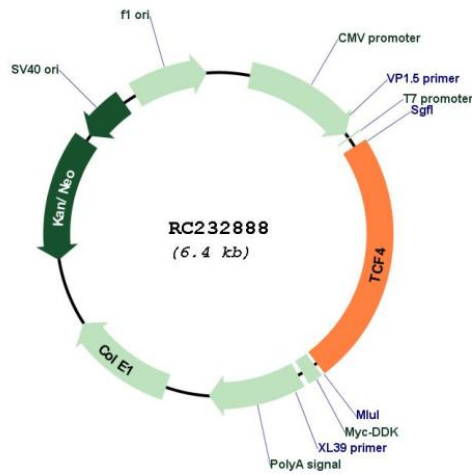
Cloning Scheme:

Cloning sites used for ORF Shutting:



* The last codon before the Stop codon of the ORF

Plasmid Map:



ACCN:	NM_001243236
ORF Size:	1521 bp
OTI Disclaimer:	The molecular sequence of this clone aligns with the gene accession number as a point of reference only. However, individual transcript sequences of the same gene can differ through naturally occurring variations (e.g. polymorphisms), each with its own valid existence. This clone is substantially in agreement with the reference, but a complete review of all prevailing variants is recommended prior to use. More info
OTI Annotation:	This clone was engineered to express the complete ORF with an expression tag. Expression varies depending on the nature of the gene.
Components:	The ORF clone is ion-exchange column purified and shipped in a 2D barcoded Matrix tube containing 10ug of transfection-ready, dried plasmid DNA (reconstitute with 100 ul of water).
Reconstitution Method:	<ol style="list-style-type: none">1. Centrifuge at 5,000xg for 5min.2. Carefully open the tube and add 100ul of sterile water to dissolve the DNA.3. Close the tube and incubate for 10 minutes at room temperature.4. Briefly vortex the tube and then do a quick spin (less than 5000xg) to concentrate the liquid at the bottom.5. Store the suspended plasmid at -20°C. The DNA is stable for at least one year from date of shipping when stored at -20°C.
RefSeq:	NM_001243236.2
RefSeq Size:	7365 bp
RefSeq ORF:	1524 bp
Locus ID:	6925
UniProt ID:	P15884
Cytogenetics:	18q21.2
Protein Families:	Druggable Genome, ES Cell Differentiation/IPS, Transcription Factors
MW:	54.6 kDa
Gene Summary:	This gene encodes transcription factor 4, a basic helix-loop-helix transcription factor. The encoded protein recognizes an Ephrussi-box ('E-box') binding site ('CANNTG') - a motif first identified in immunoglobulin enhancers. This gene is broadly expressed, and may play an important role in nervous system development. Defects in this gene are a cause of Pitt-Hopkins syndrome. In addition, an intronic CTG repeat normally numbering 10-37 repeat units can expand to >50 repeat units and cause Fuchs endothelial corneal dystrophy. Multiple alternatively spliced transcript variants that encode different proteins have been described. [provided by RefSeq, Jul 2016]