

Product datasheet for **RC232875**

EPHX2 (NM_001256484) Human Tagged ORF Clone

Product data:

Product Type:	Expression Plasmids
Product Name:	EPHX2 (NM_001256484) Human Tagged ORF Clone
Tag:	Myc-DDK
Symbol:	EPHX2
Synonyms:	ABHD20; CEH; SEH
Vector:	pCMV6-Entry (PS100001)
E. coli Selection:	Kanamycin (25 ug/mL)
Cell Selection:	Neomycin



[View online »](#)

ORF Nucleotide Sequence:

>RC232875 representing NM_001256484
 Red=Cloning site Blue=ORF Green=Tags(s)

TTTTGTAATACGACTCACTATAGGGCGGCCGGGAATTCGTCGACTGGATCCGGTACCGAGGAGATCTGCC
 GCC**CGCATCGCC**

ATGAAAGGAGAGATCACACTTTCCAGTGGATACCACTCATGGAAGAAAAGTGCAGGAAGTCTCCGAGA
 CCGCTAAAGTCTGCCTCCCAAGAATTTCTCCATAAAAGAAATCTTTGACAAGGCGATTTTCAGCCAGAAA
 GATCAACCGCCCCATGCTCCAGGCGCTCTCATGCTCAGGAAGAAAGATTCACTACTGCATCCTCACC
 AACACCTGGCTGGACGACCGTGTGAGAGAGATGGCCTGGCCAGCTGATGTGTGAGCTGAAGATGCACT
 TTGACTTCTGATAGAGTCGTGTGAGTGGGAATGGTCAAACCTGAACCTCAGATCTACAAGTTTCTGCT
 GGACACCTGAAGGCCAGCCCAGTGGTGTGTTTTTTGGATGACATCGGGCTAATCTGAAGCCAGCC
 CGTGACTTGGGAATGGTACCATCCTGGTCCAGGACACTGACACGGCCCTGAAAGAAGTGGAGAAAGTGA
 CCGGAATCCAGCTTCTCAATACCCCGGCCCTCTGCCACCTCTTGAATCCAAGTACATGAGCCATGG
 GTACGTGACAGTAAAGCCAGGGTCCGTCTGCATTTTGTGGAGCTGGGCTCCGGCCCTGCTGTGCCTC
 TGCATGGATTTCCCGAGAGTTGGTATTCTTGGAGGTACCAGATCCCTGCTCTGGCCAGGAGGTTACC
 GGGTCTAGCTATGGACATGAAAGGCTATGGAGAGTCATCTGCTCCTCCCGAAATAGAAGAAATTCAT
 GGAAGTGTATGTAAGGAGATGGTAACCTTCTGGATAAACTGGGCTCTCTCAAGCAGTGTTCATTGGC
 CATGACTGGGGTGGCATGCTGGTGTGGTACATGGCTCTCTTACCCCGAGAGAGTGAGGGCGGTGGCCA
 GTTTGAATACTCCCTTACATACCAGCAAATCCCAACATGTCCCCTTTGGAGAGTATCAAAGCCAACCCAGT
 ATTTGATTACCAGCTCTACTTCCAAGAACCAGGAGTGGCTGAGGCTGAACTGGAACAGAACCTGAGTCGG
 ACTTTCAAAGCCTCTTCCAGAGCAAGCGATGAGAGTGTATCCATGCATAAAGTCTGTGAAGCGGGAG
 GACTTTTTGTAATAGCCAGAAGCCAGCCAGCCTCAGCAGGATGGTCACTGAGGAGGAAATCCAGTTCTA
 TGTGCAGCAGTTCAAGAAGTCTGGTTTCAGAGTCTCTAAACTGGTACCGAAACATGAAAGGAAGTGG
 AAGTGGGCTTGAAGGCTTGGGACGGAAGATCCTGATTCCGGCCCTGATGGTACCGGCGGAGAAGGACT
 TCGTGCTCGTTCTCAGATGTCCAGCACATGGAGGACTGGATCCCCACCTGAAAGGGGACACATTGA
 GGACTGTGGGCACTGGACACAGATGGACAAGCCAACCGAGGTGAATCAGATCCTCATTAGTGGCTGGAT
 TCTGATGCCCGGAACCCACCGTGGTCTCAAAGATG

**ACCGGTACGCGGCCGCTCGAGCAGAAACTCATCTCAGAAGAGGATCTGGCAGCAAATGATATCCTGGATT
 ACAAGGATGACGACGATAAGGTTTAA**

Protein Sequence:

>RC232875 representing NM_001256484
 Red=Cloning site Green=Tags(s)

MKGEITLSQWIPLMEENCRKCSETAKVCLPKNFSIKEIFDKAISARKINRPLQAALMLRKKGFTTAILT
 NTWLDRAERDGLAQLMCELMHFDFLIESCQVGMVKEPEQIYKFLDLTKASPSEVFLDDIGANLKPA
 RDLGMVTILVQDQDTALKELEKVTGIQLLNTPAPLPTSCNPSDMSHGYYTVKPRVRLHFVELGSGPAVCL
 CHGFPESWYSWRYQIPALAQAGYRVLAMDMDKGYGESSAPPEIEEYCMVLCCKEMVTFDLKGLSQAVFIG
 HDWGGMLVWYMALFYPERVRAVASLNTPFIPANPNMSPLESIKANPVFDYQLYFQEPGVAEAELEQNLRS
 TFKSLFRASDESVL SMHKVCEAGGLFVNSPEEPSLSRMVTEEEIQFYVQQFKSGFRGPLNWRNMRNW
 KWACKSLGRKILIPALMVTAEKDFVLVPQMSQHMEDWIPHLKRGHIEDCGHWTQMDKPTEVNVQILIKWLD
 SDARNPPVVSKM

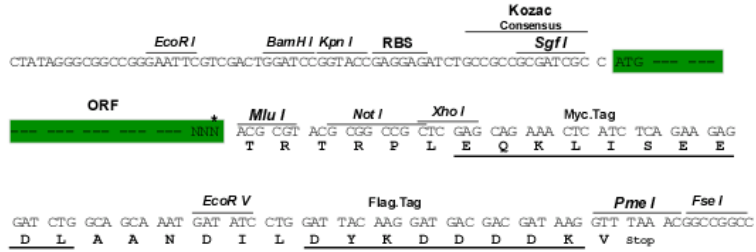
TRTRPLEQKLISEEDLAANDILDYKDDDDKV

Restriction Sites:

SgfI-MluI

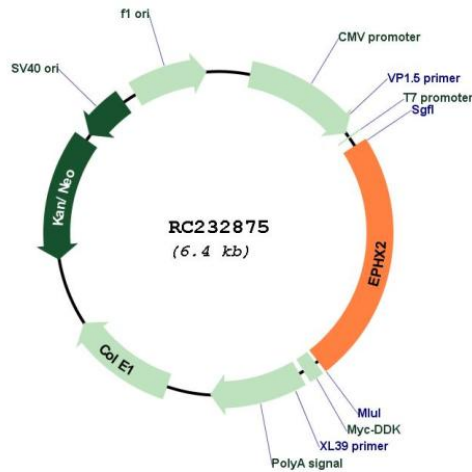
Cloning Scheme:

Cloning sites used for ORF Shuttling:



* The last codon before the Stop codon of the ORF

Plasmid Map:



ACCN: NM_001256484

ORF Size: 1506 bp

OTI Disclaimer: The molecular sequence of this clone aligns with the gene accession number as a point of reference only. However, individual transcript sequences of the same gene can differ through naturally occurring variations (e.g. polymorphisms), each with its own valid existence. This clone is substantially in agreement with the reference, but a complete review of all prevailing variants is recommended prior to use. [More info](#)

OTI Annotation: This clone was engineered to express the complete ORF with an expression tag. Expression varies depending on the nature of the gene.

Components: The ORF clone is ion-exchange column purified and shipped in a 2D barcoded Matrix tube containing 10ug of transfection-ready, dried plasmid DNA (reconstitute with 100 ul of water).

Reconstitution Method:

1. Centrifuge at 5,000xg for 5min.
2. Carefully open the tube and add 100ul of sterile water to dissolve the DNA.
3. Close the tube and incubate for 10 minutes at room temperature.
4. Briefly vortex the tube and then do a quick spin (less than 5000xg) to concentrate the liquid at the bottom.
5. Store the suspended plasmid at -20°C. The DNA is stable for at least one year from date of shipping when stored at -20°C.

RefSeq: [NM_001256484.2](#)

RefSeq Size: 2122 bp

RefSeq ORF: 1509 bp

Locus ID: 2053

UniProt ID: [P34913](#)

Cytogenetics: 8p21.2-p21.1

Protein Pathways: Arachidonic acid metabolism, Metabolic pathways

MW: 57.6 kDa

Gene Summary: This gene encodes a member of the epoxide hydrolase family. The protein, found in both the cytosol and peroxisomes, binds to specific epoxides and converts them to the corresponding dihydrodiols. Mutations in this gene have been associated with familial hypercholesterolemia. Alternatively spliced transcript variants have been described. [provided by RefSeq, Feb 2012]