

Product datasheet for **RC232873**

INT11 (CPSF3L) (NM_001256462) Human Tagged ORF Clone

Product data:

Product Type:	Expression Plasmids
Product Name:	INT11 (CPSF3L) (NM_001256462) Human Tagged ORF Clone
Tag:	Myc-DDK
Symbol:	INTS11
Synonyms:	CPSF3L; CPSF73L; INT11; RC-68; RC68
Vector:	pCMV6-Entry (PS100001)
E. coli Selection:	Kanamycin (25 ug/mL)
Cell Selection:	Neomycin



[View online »](#)

ORF Nucleotide Sequence:

>RC232873 representing NM_001256462
 Red=Cloning site Blue=ORF Green=Tags(s)

TTTTGTAATACGACTCACTATAGGGCGGCCGGAATTCGTCGACTGGATCCGGTACCGAGGAGATCTGCC
 GCC**GCGATCGCC**

ATGCCTGAGATCAGAGTCACGCCCTTGGGTGCCTGCCCTGTGCTGTCTGGAACCTGGTCCCTCCACCGG
 GCAGGGGTGCGAGGGCACCTTCCAGCACAGACACCAGGACGGGATTCCATGTCTCCCCCATGGCGTGAA
 TGATGAGCTGGAGATCAAGGCCTACTATGCAGGCCACGTGCTGGGGGAGCCATGTTCCAGATTAAGTG
 GGCTCAGAGTCTGTGGTCTACACGGGTGATTATAACATGACCCCAGACCGACTTAGGAGCTGCCTGGA
 TTGACAAGTGCCGCCCAACCTGCTCATCACAGAGTCCACGTACGCCACGACCATCCGTGACTCCAAGCG
 CTGCCGGGAGCGAGACTTCTGAAGAAAGTCCACGAGACCGTGGAGCGTGGTGGGAAGGTGCTGATACT
 GTGTTCCGCTGGCCCGCCAGGAGCTCTGCATCCTCTGGAGACCTTCTGGGAGCGCATGAACCTGA
 AGGTGCCCATCTACTTCTCCACGGGCTGACCGAGAAGGCCAACCCTACTACAAGCTGTTCCATCCCTG
 GACCAACCAGAAGATCCGCAAGACTTTCGTGCAGAGGAACATGTTTGAGTTCAAGCACATCAAGGCCTTC
 GACCGGGCTTTTCTGACAACCCAGGACCGATGGTTGTGTTTCCACGCCAGGAATGCTGCACGCTGGGC
 AGTCCCTGCAGATCTTCCGAAAATGGGCCGAAAACGAAAAGAACATGGTATCATGCCCGCTACTGCGT
 GCAGGGCACCGTCGGCCACAAGATCCTCAGCGGCAGCGGAAGCTCGAGATGGAGGGGCGGCAGGTGCTG
 GAGGTCAAGATGCAGGTGGAGTACATGTATTACGCGCACACGCGGACGCCAAGGGCATCATGCAGCTGG
 TGGGCCAGGCAGAGCCGAGAGCGTGTGCTGTTGCATGGCGAGGCCAAGAAGATGGAGTTCTGAAGCA
 GAAGATCGAGCAGGAGCTCCGGGTCAACTGCTACATGCCGGCCAAATGGCGAGACGGTACGCTGCCACA
 AGCCCCAGCATCCCCGTAGGCATCTCGCTGGGGCTGCTGAAGCGGAGATGGCGCAGGGCTGCTCCCTG
 AGGCCAAGAAGCCTCGGCTCCTGCACGGCACCTGATCATGAAGGACAGCAACTTCCGGCTGGTGCCTC
 AGAGCAAGCCCTCAAAGAGCTGGTCTGGCTGAGCACCAGCTGCGCTTACCTGCCGCTGCACCTGCAT
 GACACACGCAAGGAGCAGGAGACGGCATTGCGCGTCTACAGCCACCTCAAGAGCGTCTGAAGGACCACT
 GTGTGCAGCACCTCCAGACGGCTCTGTGACTGTGGAGTCCGTCCTCCTCAGGCCCGCCGCCCTTCTGA
 GGACCCAGGCACCAAGGTGCTGCTGGTCTCCTGGACCTACCAGGACGAGGAGCTGGGGAGCTTCTCACA
 TCTCTGCTGAAGAAGGGCTCCCCAGGCCCCAGC

ACGCGTACGCGGCCGCTCGAGCAGAACTCATCTCAGAAGAGGATCTGGCAGCAAATGATATCCTGGATT
 ACAAGGATGACGACGATAAGGTTTAA

Protein Sequence:

>RC232873 representing NM_001256462
 Red=Cloning site Green=Tags(s)

MPEIRVTPLGACPVL SWNLVLPGRGRSAPSSTDTRTFHVLPHGVNDELEIKAYYAGHVLGAAMFQIKV
 GSESVVYTGDMTPDRHLGAAWIDKCRPNLLITESTYATTIRDSKRCRERDFLKKVHETVERGGKVLIP
 VFALGRAQELCILLETFWERMNLKVPIYFSTGLTEKANHYKLFIPWTNQKIRKTFVQRNMFEFKHIAF
 DRAFADNPMPVVFATPGMLHAGQSLQIFRWAGNEKNMVIMPYCVQGTVGHKILSGQRKLEMEGRQVL
 EVKMQVEYMSFSAHADAKGIMQLVQAEPESVLLVHGEAKKMEFLKQKIEQELRVNCPANGETVTLPT
 SPSIPVGISLGLLKREMAQGLLPEAKKPRLLHGTLMKDSNFRLVSSEQALKELGLAEHQLRFTCRVHLH
 DTRKEQETALRVYSHLKSVLKDHCVQHLPDGSVTVESVLLQAAAPSEDPGTVKVLVSWTYQDEELGSFLT
 SLLKKGLPQAPS

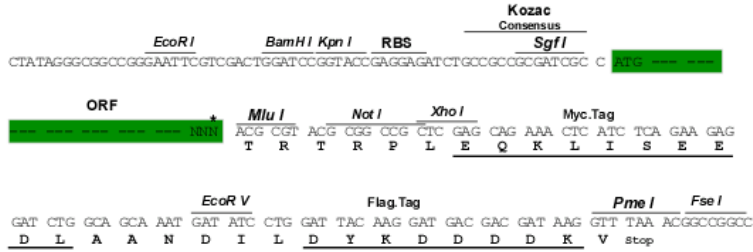
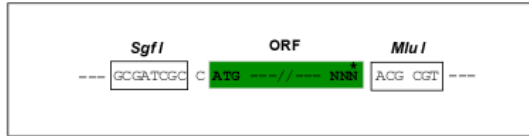
TRTRPLEQKLISEEDLAANDILDYKDDDDKV

Restriction Sites:

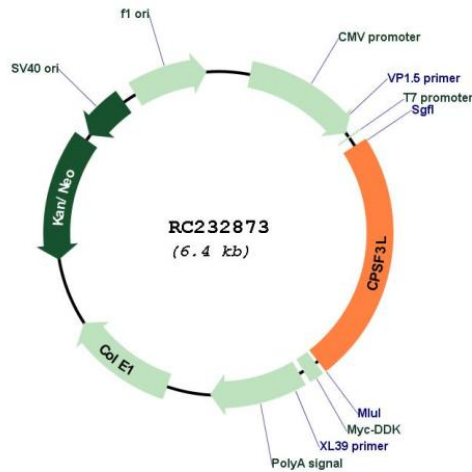
SgfI-MluI

Cloning Scheme:

Cloning sites used for ORF Shutting:



* The last codon before the Stop codon of the ORF

Plasmid Map:


ACCN: NM_001256462

ORF Size: 1506 bp

OTI Disclaimer: The molecular sequence of this clone aligns with the gene accession number as a point of reference only. However, individual transcript sequences of the same gene can differ through naturally occurring variations (e.g. polymorphisms), each with its own valid existence. This clone is substantially in agreement with the reference, but a complete review of all prevailing variants is recommended prior to use. [More info](#)

OTI Annotation: This clone was engineered to express the complete ORF with an expression tag. Expression varies depending on the nature of the gene.

Components: The ORF clone is ion-exchange column purified and shipped in a 2D barcoded Matrix tube containing 10ug of transfection-ready, dried plasmid DNA (reconstitute with 100 ul of water).

Reconstitution Method:

1. Centrifuge at 5,000xg for 5min.
2. Carefully open the tube and add 100ul of sterile water to dissolve the DNA.
3. Close the tube and incubate for 10 minutes at room temperature.
4. Briefly vortex the tube and then do a quick spin (less than 5000xg) to concentrate the liquid at the bottom.
5. Store the suspended plasmid at -20°C. The DNA is stable for at least one year from date of shipping when stored at -20°C.

RefSeq: [NM_001256462.1](#), [NP_001243391.1](#)

RefSeq Size: 1874 bp

RefSeq ORF: 1509 bp

Locus ID: 54973

UniProt ID: [Q5TA45](#)

Cytogenetics: 1p36.33

MW: 56.8 kDa

Gene Summary: The Integrator complex contains at least 12 subunits and associates with the C-terminal domain of RNA polymerase II large subunit (POLR2A; MIM 180660) and mediates the 3-prime end processing of small nuclear RNAs U1 (RNU1; MIM 180680) and U2 (RNU2; MIM 180690). INTS11, or CPSF3L, is the catalytic subunit of the Integrator complex (Baillat et al., 2005 [PubMed 16239144]).[supplied by OMIM, Mar 2008]