

Product datasheet for **RC232730**

TCP11 (NM_001261820) Human Tagged ORF Clone

Product data:

Product Type: Expression Plasmids
Product Name: TCP11 (NM_001261820) Human Tagged ORF Clone
Tag: Myc-DDK
Symbol: TCP11
Synonyms: D6S230E; FPPR
Vector: pCMV6-Entry (PS100001)
E. coli Selection: Kanamycin (25 ug/mL)
Cell Selection: Neomycin
ORF Nucleotide Sequence: >RC232730 representing NM_001261820
Red=Cloning site Blue=ORF Green=Tags(s)

TTTTGTAATACGACTCACTATAGGGCGCCGGGAATTCGTCGACTGGATCCGGTACCGAGGAGATCTGCC
GCCGCGATCGCC

ATGAATTGTGATTACTACATGGAAGAGAAGGTTTTACCTCCAAGCAGTCTGGAAGCAAGGTCAAGGAGA
 CAGTGCACAATGCCTTTGGGACCATCTTAAAGAGCAACTATCAGCAACTCCCCCTGACTTCAGCTGTGC
 TCTTGAACCTCTGAAAGAAATTAAGAGATCTTGCTATCACTGCTATTACCACGCCAGAACCCTGAGA
 ATTGAGATTGAAGAAGCTCTGGACATGGACTTGCTCAAGCAGGAGGCAGAACATGGGGCCCTGAAAGTCC
 TCTATCTCTAAGTACGTTCTCAACATGATGGCTTTGCTGTGTGCACCAGTTCGAGATGAAGCAGTGCA
 GAAACTAGAAAACATTACGGATCCTGTTGGCTACTGAGAGGGATCTTCCAGGTTCTGGGCCGGATGAAA
 ATGGACATGGTGAACACTATCCAGAGCCTTCAACCCACCTGCAGGAACATTCCATTGAGTATGAAC
 GGGCTAAATCCAGAACTCCTCAATAAGCAGCCTAGTCTCCTTAATCACACCACCAATGGCTGACCCA
 AGCAGCAGGAGACCTCACCATGTCACCTCCGACTTGCCAGACACTTCTGACTCCTCCAGTGTGGCTGGC
 CCCTCTCCAATGAGGCAGCCAACAACCCAGAGCCCTCAGCCCCACAATGGTGTGTGTCAGGGCTTCT
 TGAACCTCCTTCTGGGACCTTGAAAATGAAGAGTTCCCTGAGACCTGCTGATGGCAGAACCCGGCT
 GCAGGAGCTGAAGTCCCAGTTGCACCAAGTTAACCGTCATGGCCTCAGTCTTGCTGGTGGCCAGTAGTTTC
 TCCGGCAGTGTTTTGTTGGCTCACCCCAATTTGTAGATAAACTGAAACGCATAACCAAAATCCTTGTGG
 AAGACTTTCACCTCAGGCCTGAGGAAGCTATACTGACTGTGAGTGAACAGGTATCTCAGGAAATCCATCA
 AAGCCTCAAGAATATGGGCCTTGTGCTCTAAGCAGTGATAATACAGCATCTCTAATGGGACAGCTCCAG
 AACATTGCCAAGAAGGAGAACTGTGTGTCAGTGTATTGATCAGCGGATCCATTTGTTTCTCAAATGCT
 GTTTGGTCTTGGTGTGCAGCGGTCTCTATTAGACCTTCTGGAGGCCTTACTCTATTGAAGCAGAACT
 GGCAGAACTGGGCCAAAAGTTTGTCAACTTGACACATCACAATCAGCAGGTGTTTGGTCCCTACTACACT
 GAGATCCTAAAAACCTCATTTCAGCCAGCCAGGCACTGGAACAAAAGTGGAGTCTGTT

ACGCGTACGCGGCCGCTCGAGCAGAAACTCATCTCAGAAGAGGATCTGGCAGCAAATGATATCCTGGATT
 ACAAGGATGACGACGATAAGGTTTAA



Protein Sequence: >RC232730 representing NM_001261820
 Red=Cloning site Green=Tags(s)

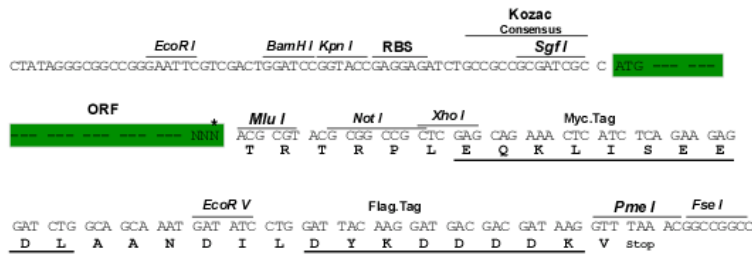
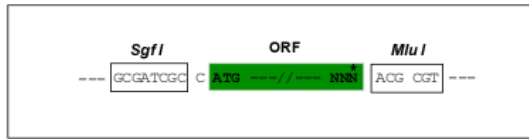
MNCDYYMEEKVLPPSSLEGKVKETVHNAFWDHLKEQLSATPPDFSCALELLKEIKEILLSLLPRQNRLR
 IEIEEALDMDLLKQEAHGALKVLYLSKYVLNMMALLCAPVRDEAVQKLENITDPVWLLRGIFQVLGRMK
 MDMVNYTIQSLQPHLQEHSIQYERAKFQELLNKQPSLLNHTTKWLQAAGDLTMSPPTCPDTSDDSSVAG
 PSPNEAANNPEPLSPTMVL CQGFLNLLLWDLNEEFPETLLMDRTRLQELKSQLHQLTVMASVLLVASSF
 SGSVLFGSPQFVDKLRITKSLLEDFHSRPEEAILT VSEQVSQEIHQSLKNMGLVALSSDNTASLMGQLQ
 NIAKKENCVCSVIDQRIHLFLKCCVLVGVQRSLDLPGGLTLEAEL AELGQKFVNLTHHNQVFGPYTY
 EILKTLISPAQALETKVESV

TRTRPLEQKLISEEDLAANDILDYKDDDDKV

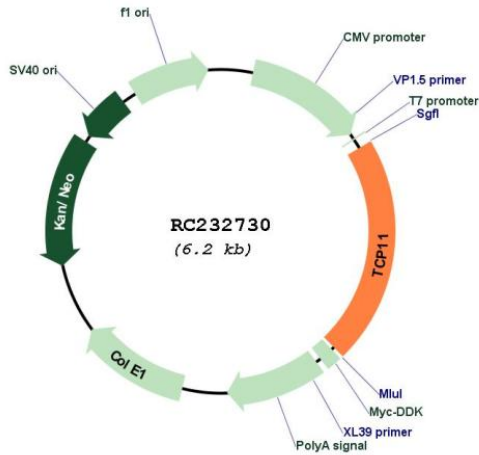
Restriction Sites:
 Cloning Scheme:

SgfI-MluI

Cloning sites used for ORF Shuttling:



Plasmid Map:



ACCN: NM_001261820

ORF Size:	1320 bp
OTI Disclaimer:	The molecular sequence of this clone aligns with the gene accession number as a point of reference only. However, individual transcript sequences of the same gene can differ through naturally occurring variations (e.g. polymorphisms), each with its own valid existence. This clone is substantially in agreement with the reference, but a complete review of all prevailing variants is recommended prior to use. More info
OTI Annotation:	This clone was engineered to express the complete ORF with an expression tag. Expression varies depending on the nature of the gene.
Components:	The ORF clone is ion-exchange column purified and shipped in a 2D barcoded Matrix tube containing 10ug of transfection-ready, dried plasmid DNA (reconstitute with 100 ul of water).
Reconstitution Method:	<ol style="list-style-type: none">1. Centrifuge at 5,000xg for 5min.2. Carefully open the tube and add 100ul of sterile water to dissolve the DNA.3. Close the tube and incubate for 10 minutes at room temperature.4. Briefly vortex the tube and then do a quick spin (less than 5000xg) to concentrate the liquid at the bottom.5. Store the suspended plasmid at -20°C. The DNA is stable for at least one year from date of shipping when stored at -20°C.
RefSeq:	NM_001261820.1 , NP_001248749.1
RefSeq Size:	2147 bp
RefSeq ORF:	1323 bp
Locus ID:	6954
UniProt ID:	Q8WWU5
Cytogenetics:	6p21.31
MW:	50 kDa
Gene Summary:	Plays a role in the process of sperm capacitation and acrosome reactions. Probable receptor for the putative fertilization-promoting peptide (FPP) at the sperm membrane that may modulate the activity of the adenylyl cyclase cAMP pathway.[UniProtKB/Swiss-Prot Function]