

Product datasheet for **RC232707**

PPP2R2C (NM_001206996) Human Tagged ORF Clone

Product data:

Product Type:	Expression Plasmids
Product Name:	PPP2R2C (NM_001206996) Human Tagged ORF Clone
Tag:	Myc-DDK
Symbol:	PPP2R2C
Synonyms:	B55-GAMMA; B55gamma; IMYPNO; IMYPNO1; PR52; PR55G
Mammalian Cell Selection:	Neomycin
Vector:	pCMV6-Entry (PS100001)
E. coli Selection:	Kanamycin (25 ug/mL)



[View online »](#)

ORF Nucleotide Sequence:

>RC232707 representing NM_001206996
 Red=Cloning site Blue=ORF Green=Tags(s)

TTTTGTAATACGACTCACTATAGGGCGGCCGGAATTCGTCGACTGGATCCGGTACCGAGGAGATCTGCC
 GCC**GCGATCGCC**

ATGGGAAAGAGACACGGCTGACATCATCTCTACCGTTGAGTTCAACCACACGGGAGAGCTGCTGGCCA
 CAGGTGACAAGGGCGCCGGGTGTCATCTTCCAGCGGGAACCAGAGAGTAAAAATGCGCCACAGCCA
 GGGCGAATACGACGTGTACAGCACTTCCAGAGCCACGAGCCGGAGTTTGACTATCTCAAGACCTGGAG
 ATAGAGGAGAAGATCAACAAGATCAAGTGGCTCCACAGCAGAACGCCGCCACTCACTCTGTCCACCA
 ACGATAAACTATCAAATTATGGAAGATTACCGAACGAGATAAAAGGCCCGAAGGATACAACCTGAAGGA
 TGAAGAGGGGAACTTAAGGACCTGTCCACGGTACGTCCTGACAGTGCAGGTGCCAGTGTGAAGCCATGGAT
 CTGATGGTGGAGGTGAGCCCTCGGAGGATCTTTGCCAATGGCCACACCTACCACATCAACTCCATCTCCG
 TCAACAGTGACTGCGAGACCTACATGTCGGCGGATGACCTGCGCATCAACCTCTGGCACCTGGCCATCAC
 CGACAGGAGCTTCAACATCGTGGACATCAAGCCGGCCAACATGGAGGACCTTACGGAGGTGATCACAGCA
 TCTGAGTTCATCCGACCACTGCAACCTTTCGTCTACAGCAGCAGCAAGGGCTCCCTGCGGCTCTGCG
 ACATGCGGGCAGCTGCCCTGTGTGACAAGCATTCCAAGCTCTTTGAAGAGCCTGAGGACCCAGTAAACC
 CTCATTCTTCTCGGAAATCATCTCCTCCGTGTCGACGTGAAGTTCAGCCACAGCGGCCGTACATGCTC
 ACCCGGGACTACCTTACAGTCAAGGTCTGGGACCTGAACATGGAGGCAAGACCCATAGAGACCTACCAGG
 TCCATGACTACCTTCGGAGCAAGCTCTGTTCCCTGTACGAGAACGACTGCATTTTCGACAAGTTTGAATG
 TGCTTGAACGGGAGCGACGCGTCATCATGACCGGGCCATAACAACCTTTCGCGATGTTGATCGG
 AACACCAAGCGGGACGTGACCTGGAGGCTCGAGGAAAGCAGCAAGCCCGGGCTGTGCTCAAGCCAC
 GGCGCGTGTGCGTGGGGGCAAGCGCGCGGTGATGACATCAGTGTGGACAGCTTGGACTTACCAAGAA
 GATCCTGCACACGGCTGGCACCCGGCTGAGAACATCATTGCCATCGCCGCCACCAACAACCTGTACATC
 TTCCAGGACAAGTAACTCTGACATGCAC

ACGCGTACGCGGCCGCTCGAGCAGAACTCATCTCAGAAGAGGATCTGGCAGCAATGATATCCTGGATT
 ACAAGGATGACGACGATAAGGTTTAA

Protein Sequence:

>RC232707 representing NM_001206996
 Red=Cloning site Green=Tags(s)

MGKRDTADIISTVEFNHTGELLATGDKGGRVVFQREPESKNAPHSQGEYDVYSTFQSHEPEFDYLSLE
 IEEKINKIKWLPQQNAHSLSTNDKTIKWKITERDKRPEGYNLKDEEGKLDLSTVTSLVQVPLKPM
 LMVEVSPRRIFANGHTYHINSISVNSDCETYMSADDLRINLWHLAITDRSFNIVDIKPANMEDL
 TEVITA SEFHPHHCNLFVYSSSKGSLRLCDMRAAALCDKHSKLFEEPEDPSNRSFFSEIISVSDVKF
 SHSGRYML TRDYLTVKVWDLNMEARPIETYQVHDYLRSLKLSLYENDCIFDKFECANWGS
 DSVIMTGAYNNFFRMFDR NTKRDVTLEASRESSKPRAVLKPRRVVCGGKRRRDDISVDSLDF
 TKKILHTAWHPAENIIAIAATNNLYI FQDKVNSDMH

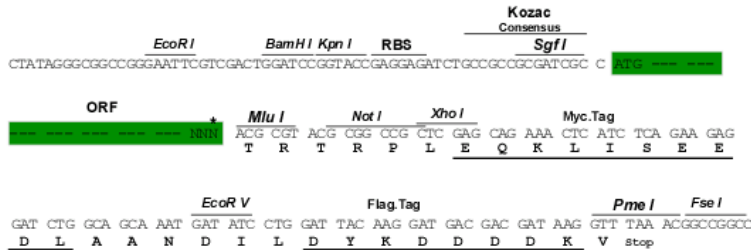
TRTRPLEQKLISEEDLAANDILDYKDDDDKV

Restriction Sites:

SgfI-MluI

Cloning Scheme:

Cloning sites used for ORF Shutting:



* The last codon before the Stop codon of the ORF

ACCN: NM_001206996

ORF Size: 1290 bp

OTI Disclaimer: The molecular sequence of this clone aligns with the gene accession number as a point of reference only. However, individual transcript sequences of the same gene can differ through naturally occurring variations (e.g. polymorphisms), each with its own valid existence. This clone is substantially in agreement with the reference, but a complete review of all prevailing variants is recommended prior to use. [More info](#)
OTI Annotation: This clone was engineered to express the complete ORF with an expression tag. Expression varies depending on the nature of the gene.

Components: The ORF clone is ion-exchange column purified and shipped in a 2D barcoded Matrix tube containing 10ug of transfection-ready, dried plasmid DNA (reconstitute with 100 ul of water).

Reconstitution Method:

1. Centrifuge at 5,000xg for 5min.
2. Carefully open the tube and add 100ul of sterile water to dissolve the DNA.
3. Close the tube and incubate for 10 minutes at room temperature.
4. Briefly vortex the tube and then do a quick spin (less than 5000xg) to concentrate the liquid at the bottom.
5. Store the suspended plasmid at -20°C. The DNA is stable for at least one year from date of shipping when stored at -20°C.

RefSeq: [NM_001206996.1](#), [NP_001193925.1](#)
RefSeq Size: 4315 bp

RefSeq ORF: 1293 bp

Locus ID: 5522

UniProt ID: [Q9Y2T4](#)
Cytogenetics: 4p16.1

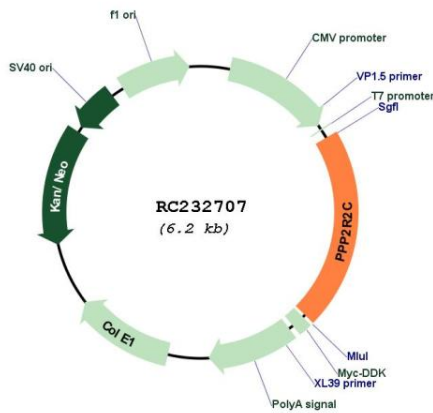
Protein Families: Druggable Genome, Phosphatase

Protein Pathways: Tight junction

MW: 49.9 kDa

Gene Summary: The product of this gene belongs to the phosphatase 2 regulatory subunit B family. Protein phosphatase 2 is one of the four major Ser/Thr phosphatases, and it is implicated in the negative control of cell growth and division. It consists of a common heteromeric core enzyme, which is composed of a catalytic subunit and a constant regulatory subunit, that associates with a variety of regulatory subunits. The B regulatory subunit might modulate substrate selectivity and catalytic activity. This gene encodes a gamma isoform of the regulatory subunit B55 subfamily. Alternatively spliced transcript variants encoding different isoforms have been identified. [provided by RefSeq, Jul 2008]

Product images:



Circular map for RC232707