

Product datasheet for RC232507

BTN3A2 (NM_001197246) Human Tagged ORF Clone

Product data:

Product Type:	Expression Plasmids
Product Name:	BTN3A2 (NM_001197246) Human Tagged ORF Clone
Tag:	Myc-DDK
Symbol:	BTN3A2
Synonyms:	BT3.2; BTF4; BTN3.2; CD277
Mammalian Cell Selection:	Neomycin
Vector:	pCMV6-Entry (PS100001)
E. coli Selection:	Kanamycin (25 ug/mL)
ORF Nucleotide Sequence:	>RC232507 ORF sequence Red=Cloning site Blue=ORF Green=Tags(s)

TTTTGTAATACGACTCACTATAGGGCGGCCGGAATTCGTCGACTGGATCCGGTACCGAGGAGATCTGCC
GCC**CGATCGCC**

ATGAAAATGGCAAGTTCCTGGCTTTCCTTCTGCTCAACTTTCATGTCTCCCTCCTTTGGTCCAGCTGC
TCACTCCTTGCTCAGCTCAGTTTTCTGTGCTTGGACCTCTGGGCCATCCTGGCCATGGTGGTGAAGA
CGCTGATCTGCCCTGTCACCTGTCCCGACCATGAGTGCAGAGACCATGGAGCTGAAGTGGGTAAGTTCC
AGCCTAAGGCAGGTGGTGAACGTGTATGCAGATGGAAAGGAAGTGAAGACAGGCAGAGTGCACCGTATC
GAGGGAGAACTTCGATTCTGCGGGATGGCATCACTGCAGGAAGGCTGCTCTCGAATACACAACGTCAC
AGCCTCTGACAGTGGAAAGTACTTGTGTTATTTCCAAGATGGTGACTTCTATGAAAAAGCCCTGGTGGAG
CTGAAGGTTGCAGCACTGGGTTCTAATCTTACAGTCAAGTGAAGGGTTATGAGGATGGAGGGATCCATC
TGGAGTGCAGGTCCACCGGCTGGTACCCCAACCCCAATACAGTGGAGCAACGCCAAGGGAGAGAACAT
CCCAGCTGTGGAAGCACCTGTGGTTGCAGATGGAGTGGGCCTATATGAAGTAGCAGCATCTGTGATCATG
AGAGGCGGCTCCGGGGAGGGTGTATCCTGCATCATCAGAAATTCCTCCTCGGCCTGGAAAAACAGCCA
GCATTTCCATCGCAGACCCCTTCTCAGGAGCGCCAGCCCTGGATCGCAGCCCTGGCAGGGACCCCTGCC
TATCTTGCTGCTGCTTCTCGCCGGAGCCAGTTACTTCTTGTGGAGACAACAGAAGGAAATAACTGCTCTG
TCCAGTGAGATAGAAAGTGAAGAGATGAAAGAAATGGGATATGCTGCAACAGAGCGGAAATAAGCC
TAAGAGAGAGCCTCCAGGAGGAACCTCAAGAGGAAAAAATCCAGTACTTGACTCGTGGAGAGGAGTCTTC
GTCCGATACCAATAAGTCAGCC

ACGCGTACGCGGCCGCTCGAGCAGAAACTCATCTCAGAAGAGGATCTGGCAGCAATGATATCCTGGATT
ACAAGGATGACGACGATAAGGTTTAA



Protein Sequence: >RC232507 protein sequence
Red=Cloning site Green=Tags(s)

MKMASSLAFLLLNFHVSLLL VQLLTPCSAQF SVLGPSPILAMVGEDADLPCHL FPTMSAETMELKWVSS
 SLRQVVVYADGKEVEDRQSAPYRGRTSILRDGITAGKAALRIHNVTASDSGKYL CYFQDGFYEKALVE
 LKVAALGSNLHVEVKGYEDGGIHL ECRSTGWYQPQIQWSNAKGENIPAVEAPVADGVGLYEVAASVIM
 RGGSGEGVSCIIRNSLLGLEKTASIS IADPFFRSAQPWIAALAGTLPILLLLLAGASYFLWRQQKEITAL
 SSEIESEQEMKEMGYAATEREISLRESLQEELKRKKIQYLTRGEESSSDTNKSA

TRTRPLEQKLISEEDLAANDILDYKDDDDKV

Chromatograms: https://cdn.origene.com/chromatograms/mk6150_h02.zip

Restriction Sites: SgfI-MluI

Cloning Scheme:

Cloning sites used for ORF Shuttling:



* The last codon before the Stop codon of the ORF

ACCN: NM_001197246

ORF Size: 1002 bp

OTI Disclaimer: The molecular sequence of this clone aligns with the gene accession number as a point of reference only. However, individual transcript sequences of the same gene can differ through naturally occurring variations (e.g. polymorphisms), each with its own valid existence. This clone is substantially in agreement with the reference, but a complete review of all prevailing variants is recommended prior to use. [More info](#)

OTI Annotation: This clone was engineered to express the complete ORF with an expression tag. Expression varies depending on the nature of the gene.

Components: The ORF clone is ion-exchange column purified and shipped in a 2D barcoded Matrix tube containing 10ug of transfection-ready, dried plasmid DNA (reconstitute with 100 ul of water).

Reconstitution Method:

1. Centrifuge at 5,000xg for 5min.
2. Carefully open the tube and add 100ul of sterile water to dissolve the DNA.
3. Close the tube and incubate for 10 minutes at room temperature.
4. Briefly vortex the tube and then do a quick spin (less than 5000xg) to concentrate the liquid at the bottom.
5. Store the suspended plasmid at -20°C. The DNA is stable for at least one year from date of shipping when stored at -20°C.

RefSeq: [NM_001197246.2](#), [NP_001184175.1](#)

RefSeq Size: 2836 bp

RefSeq ORF: 1005 bp

Locus ID: 11118

UniProt ID: [P78410](#)

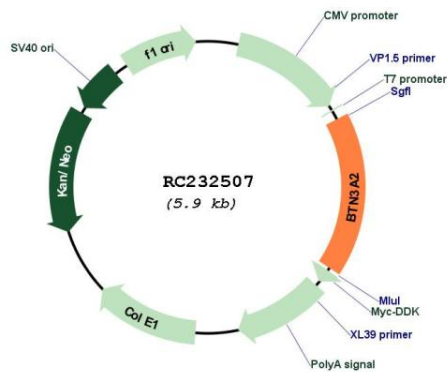
Cytogenetics: 6p22.2

Protein Families: Druggable Genome, Transmembrane

MW: 36.4 kDa

Gene Summary: This gene encodes a member of the immunoglobulin superfamily, which resides in the juxtatelomeric region of the major histocompatibility class 1 locus and is clustered with the other family members on chromosome 6. The encoded protein may be involved in the adaptive immune response. Alternatively spliced transcript variants encoding different isoforms have been found for this gene. [provided by RefSeq, Jun 2013]

Product images:



Circular map for RC232507