

Product datasheet for **RC232419**

GLYATL1 (NM_001220494) Human Tagged ORF Clone

Product data:

Product Type:	Expression Plasmids
Product Name:	GLYATL1 (NM_001220494) Human Tagged ORF Clone
Tag:	Myc-DDK
Symbol:	GLYATL1
Synonyms:	GATF-C; GNAT
Mammalian Cell Selection:	Neomycin
Vector:	pCMV6-Entry (PS100001)
E. coli Selection:	Kanamycin (25 ug/mL)
ORF Nucleotide Sequence:	>RC232419 representing NM_001220494 Red=Cloning site Blue=ORF Green=Tags(s)

TTTTGTAATACGACTCACTATAGGGCGCCGGGAATTCGTCGACTGGATCCGGTACCGAGGAGATCTGCC
GCC**CGGATCGCC**

ATGATCCTACTGAATAACTCCCATAAGCTGCTGGCCCTATACAAATCCTTGGCCAGGAGCATCCCTGAGT
CCCTGAAGGTGTATGGCTCTGTGTATCACATCAATCACGGGAACCCCTTCAACATGGAGGTGCTGGTGA
TTCCTGGCCTGAATATCAGATGGTTATTATCCGGCCTCAAAGCAGGAGATGACTGATGACATGGATTCA
TACACAAACGTATATCGTATGTTCTCAAAGAGCCTCAAAAATCAGAAGAAGTTTTGAAAAATTGTGAGA
TCGTAAGTGGAAACAGAGACTCAAATCCAAGTCTTCAAGAAAGTTTAGGTGAGGGGATAAGAGTGGC
TACATTTTCAAAGTCAGTGAAAGTAGAGCATTCGAGAGCACTCCTCTGGTTACGGAAGATATTCTGAAG
CTCAATGCCTCCAGTAAAAGCAAGCTTGAAGCTGGGCTGAGACAGGCCACCCAGATGATGAATTTGAAA
GTGAAACTCCCAACTTTAAGTATGCCAGCTGGATGTCTTATTCTGGGCTGGTAAATGACAACTGGAA
GCGAGGGAAGAATGAGAGGAGCCTGCATTACATCAAGCGCTGCATAGAAGACCTGCCAGCAGCCTGTATG
CTCGGCCAGAGGGAGTCCCGTCTCATGGTAACCATGGACCCTTCTTGTGAAGTAGGAATGGCCTACA
GCATGGAAAAATACCGAAGGACAGGCAACATGGCAGGATGATGGTGGCATAATGAAATATCTGCGTCA
GAAGAATATTCCATTTTACATCTCTGTGTTGGAAGAAAATGAAGACTCCCGCAGATTTGTGGGCGAGTTT
GGTTTCTTTGAGGCTCCTGTGAGTGGCACCAATGGACTTGCTACCCACAGAATCTAGTTCCATTT

ACGCGTACGCGGCCGCTCGAGCAGAAACTCATCTCAGAAGAGGATCTGGCAGCAAATGATATCCTGGATT
ACAAGGATGACGACGATAAGGTTTAA



[View online »](#)

Protein Sequence: >RC232419 representing NM_001220494
Red=Cloning site Green=Tags(s)

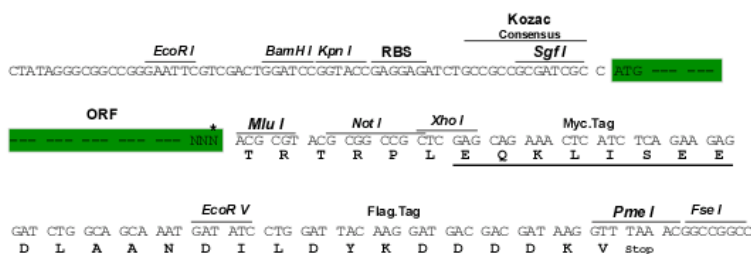
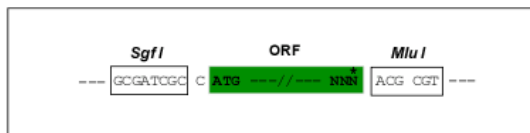
MILLNNSHKLALYKSLARSIPESLKVYGSVYHINHGPNFMEVLVDSWPEYQMVIIRPQKQEMTDDMDS
YTNVYRMFSKEPQKSEEVLNKCEIVNWKQRLQIQGLQESLGEIIRVATF SKSVKVEHSRALLLVTEDILK
LNASSKSLGSAWETGHPDDEFESETPNFKYAQLDVSYSGLVNDNWKRGKNNERSLHYIKRCIEDLPAACM
LGPEGVPVSWVTMDP SCEVGMAYSMEKYRRTGNMARVMVRYMKYL RQKNIPFYISVLEENEDSRRFVQGF
GFFEASCEWHQWTCYPQNLVPF

TRTRPLEQKLISEEDLAANDILDYKDDDDKV

Restriction Sites: Sgfi-MluI

Cloning Scheme:

Cloning sites used for ORF Shuttling:



* The last codon before the Stop codon of the ORF

ACCN: NM_001220494

ORF Size: 906 bp

OTI Disclaimer: The molecular sequence of this clone aligns with the gene accession number as a point of reference only. However, individual transcript sequences of the same gene can differ through naturally occurring variations (e.g. polymorphisms), each with its own valid existence. This clone is substantially in agreement with the reference, but a complete review of all prevailing variants is recommended prior to use. [More info](#)

OTI Annotation: This clone was engineered to express the complete ORF with an expression tag. Expression varies depending on the nature of the gene.

Components: The ORF clone is ion-exchange column purified and shipped in a 2D barcoded Matrix tube containing 10ug of transfection-ready, dried plasmid DNA (reconstitute with 100 ul of water).

Reconstitution Method:

1. Centrifuge at 5,000xg for 5min.
2. Carefully open the tube and add 100ul of sterile water to dissolve the DNA.
3. Close the tube and incubate for 10 minutes at room temperature.
4. Briefly vortex the tube and then do a quick spin (less than 5000xg) to concentrate the liquid at the bottom.
5. Store the suspended plasmid at -20°C. The DNA is stable for at least one year from date of shipping when stored at -20°C.

RefSeq: [NM_001220494.3](#)

RefSeq Size: 2364 bp

RefSeq ORF: 909 bp

Locus ID: 92292

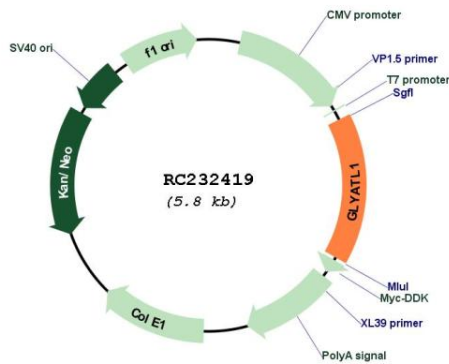
UniProt ID: [Q969I3](#)

Cytogenetics: 11q12.1

MW: 35.6 kDa

Gene Summary: Acyltransferase which transfers an acyl group to the N-terminus of glutamine. Can use phenylacetyl-CoA as an acyl donor.[UniProtKB/Swiss-Prot Function]

Product images:



Circular map for RC232419