

Product datasheet for RC232393

CENPO (NM_001199803) Human Tagged ORF Clone

Product data:

Product Type:	Expression Plasmids
Product Name:	CENPO (NM_001199803) Human Tagged ORF Clone
Tag:	Myc-DDK
Symbol:	CENPO
Synonyms:	CENP-O; ICEN-36; MCM21R
Mammalian Cell Selection:	Neomycin
Vector:	pCMV6-Entry (PS100001)
E. coli Selection:	Kanamycin (25 ug/mL)
ORF Nucleotide Sequence:	>RC232393 representing NM_001199803 Red=Cloning site Blue=ORF Green=Tags(s)

TTTTGTAATACGACTCACTATAGGGCGGCCGGAATTCGTCGACTGGATCCGGTACCGAGGAGATCTGCC
GCC**CGATCGCC**

ATGGCGGGAATTCTCGCTTCTGGCCTGGGTGTTTTAGCTCACTTGGAAAGGCTAGAGACCCAAGTGAGCA
GATCCCGTAAACAGTCTGAAGAGCTGCAGAGCGTGCAGGCCAGGAAGGTGCTCTTGGAACCAAGATTCA
TAAACTAAGGCGTCTGCGAGATGAGCTGAGGGCTGTGGTCCGGCACCGGCGAGCCAGCGTGAAAGCATGT
ATTGCCAATGTAGAACCAACCAACAGTGGAGATCAATGAGCAAGAAGCATTGGAAGAGAAATTGGAAA
ATGTGAAAGCCATTCTGCAGGCATATCATTTTACAGGCCTCAGTGGTAACTGACCAGCCGAGGAGTTTG
TGTCTGCATCAGTACTGCTTTTGGGGAACTATTGGATTCTATTTTGTGGACCTTGTCATACAGAAA
CCACTCCGGATACATCACCATTAGTCCCAGTCTTCATTTCCCTGGAAGAGATAGCTGCAAAATATTTAC
AGACCAACATCCAGCACTTCTGTTTCAGTCTCTGCGAGTACCTGAATGCTTACTCTGGGAGGAAGTACCA
GGCAGACCCGGCTTCCAGAGTACTTTGCAGCCCTCCTGACTGGGCCCTTGCAGAGAAACCACTGTGTAAC
TTGCTGTCATTTACTTACAACTGGATCCAGGGGGTCACTCCTCCCGTTCTGTGCTAGATTGCTGTATA
AGGACCTCACAGCAACTTCCCACTGACGTACCGTGACATGTCAAGGAGTGAAGTATTATCCACTTC
ATGGGAGGAGCAACGAGCATCTCATGAACTCTGTTCTGTACGAAGCCCTTGCATCAAGTGTGGCTCA
TTTACAAGAAAAGGAGAAAAGTTGGATATGAGTCTGGTCTCC

ACGCGTACGCGGCCGCTCGAGCAGAAACTCATCTCAGAAGAGGATCTGGCAGCAAATGATATCCTGGATT
ACAAGGATGACGACGATAAGGTTTAA



[View online »](#)

Protein Sequence: >RC232393 representing NM_001199803
 Red=Cloning site Green=Tags(s)

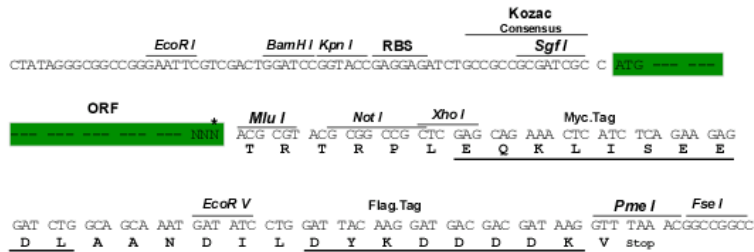
MAGILASGLGVL AHLERLETQVSRSRKQSEELQSVQAQEGALGKTIHKLRRRLRDELRAVVRHRRASVKAC
 IANVEPNQTVEINEQEALEEKLNVKAILQAYHFTGLSGKLT SRGVCVCISTAFEGNLLDSYFVDLVIQK
 PLRIHHHSVPVFIPLLEEIAAKYLQTNIQHFLFLSCEYLNAYSGRKYQADRLQSDFAALLTGPLQRNPLCN
 LLSFTYKLDPGGQSFPCARLLYKDLTATLPTDVTVTVCQGV EVLSTSWEEQRASHETLFC TKPLHQVFAS
 FTRKGEKLDMSLVS

TRTRPLEQKLISEEDLAANDILDYKDDDDKV

Restriction Sites: SgfI-MluI

Cloning Scheme:

Cloning sites used for ORF Shuttling:



* The last codon before the Stop codon of the ORF

ACCN: NM_001199803

ORF Size: 882 bp

OTI Disclaimer: The molecular sequence of this clone aligns with the gene accession number as a point of reference only. However, individual transcript sequences of the same gene can differ through naturally occurring variations (e.g. polymorphisms), each with its own valid existence. This clone is substantially in agreement with the reference, but a complete review of all prevailing variants is recommended prior to use. [More info](#)

OTI Annotation: This clone was engineered to express the complete ORF with an expression tag. Expression varies depending on the nature of the gene.

Components: The ORF clone is ion-exchange column purified and shipped in a 2D barcoded Matrix tube containing 10ug of transfection-ready, dried plasmid DNA (reconstitute with 100 ul of water).

Reconstitution Method:

1. Centrifuge at 5,000xg for 5min.
2. Carefully open the tube and add 100ul of sterile water to dissolve the DNA.
3. Close the tube and incubate for 10 minutes at room temperature.
4. Briefly vortex the tube and then do a quick spin (less than 5000xg) to concentrate the liquid at the bottom.
5. Store the suspended plasmid at -20°C. The DNA is stable for at least one year from date of shipping when stored at -20°C.

RefSeq: [NM_001199803.3](#)

RefSeq Size: 4125 bp

RefSeq ORF: 885 bp

Locus ID: 79172

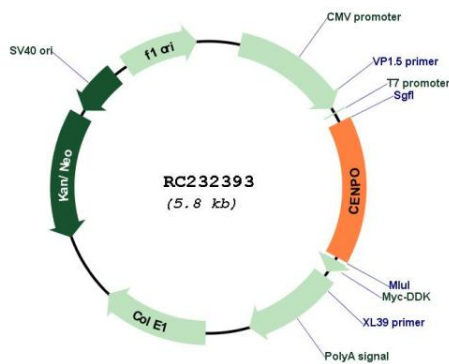
UniProt ID: [Q9BU64](#)

Cytogenetics: 2p23.3

MW: 33.4 kDa

Gene Summary: This gene encodes a component of the interphase centromere complex. The encoded protein is localized to the centromere throughout the cell cycle and is required for bipolar spindle assembly, chromosome segregation and checkpoint signaling during mitosis. Alternatively spliced transcript variants encoding multiple protein isoforms have been observed for this gene. [provided by RefSeq, Dec 2010]

Product images:



Circular map for RC232393