

Product datasheet for **RC232304**

KCTD1 (NM_001258221) Human Tagged ORF Clone

Product data:

Product Type: Expression Plasmids
Product Name: KCTD1 (NM_001258221) Human Tagged ORF Clone
Tag: Myc-DDK
Symbol: KCTD1
Synonyms: C18orf5
Mammalian Cell Selection: Neomycin
Vector: pCMV6-Entry (PS100001)
E. coli Selection: Kanamycin (25 ug/mL)
ORF Nucleotide Sequence: >RC232304 representing NM_001258221
Red=Cloning site Blue=ORF Green=Tags(s)

TTTTGTAATACGACTCACTATAGGGCGGCCGGAATTCGTCGACTGGATCCGGTACCGAGGAGATCTGCC
GCC**CGGATCGCC**

ATGTCAAGACCTCTGATCACTAGATCCCCTGCATCTCCACTGAACAACCAAGGCATCCCTACTCCAGCAC
AACTCACAAAATCCAATGCACCTGTCCACATTGATGTGGCGGCCACATGTACACCAGCAGCCTGGCCAC
CCTCACAAAATACCCTGAATCCAGAATCGGAAGACTTTTTGATGGTACAGAGCCCATTGTTTTGGACAGT
CTCAAACAGCACTATTTTCATTGACAGAGATGGACAGATGTTGAGATATATCTTGAATTTTCTACGAACAT
CCAAACTCCTCATTCTGATGATTTCAAGGACTACACTTTGTTATATGAAGAGGCAAAATATTTTCAGCT
TCAGCCCATGTTGTTGGAGATGGAAGATGGAAGCAGGACAGAGAACTGGTCGATTTTCAAGGCCCTGT
GAGTGCCTCGTCGTGCGTGTGGCCCCAGACCTCGGAGAAAGGATCACGCTAAGCGGTGACAAATCCTTGA
TAGAAGAAGTATTTCCAGAGATCGGCGACGTGATGTGTAACCTCTGTCAATGCAGGCTGGAATCACGACTC
GACGCACGTATCAGGTTTCCACTAAATGGCTACTGTACCTCAACTCAGTCCAGGTCCTCGAGAGGTTG
CAGCAAAGAGGATTTGAAATCGTGGCTCCTGTGGGGGAGGAGTAGACTCGTCCCAGTTCAGCGAATACG
TCCTTCGGCGGGAACAGGCGGACGCCCGTGTACCTCCGTCATCCGGATAAAGCAAGAGCCTCTGGA
C

ACGCGTACGCGGCCGCTCGAGCAGAACTCATCTCAGAAGAGGATCTGGCAGCAAATGATATCCTGGATT
ACAAGGATGACGACGATAAGGTTTAA



[View online »](#)

Protein Sequence: >RC232304 representing NM_001258221
 Red=Cloning site Green=Tags(s)

MSRPLITRSPASPLNNQGIPTPAQLTKSNAPVHIDVGGHMYTSSLATLTKYPESRIGRLFDGTEPIVLDS
 LKQHYFIDRDGQMFRIYILNFLRTSKLLIPDDFKDYTLLEYEAKYFQLQPMLLEMERWKQDRETGRFSRPC
 ECLVVRVAPDLGERITLSGDKSLIEEVFPEIGDVMCNSVNAGWNHDSTHVIRFPLNGYCHLNSVQVLERL
 QQRGFEIVGSCGGGVDSQFSEYVLRRELRRTPRVPSVIRIKQEPLD

TRTRPLEQKLISEEDLAANDILDYKDDDDKV

Chromatograms: https://cdn.origene.com/chromatograms/mk6455_b01.zip

Restriction Sites: SgfI-MluI

Cloning Scheme:

Cloning sites used for ORF Shuttling:



* The last codon before the Stop codon of the ORF

ACCN: NM_001258221

ORF Size: 771 bp

OTI Disclaimer: The molecular sequence of this clone aligns with the gene accession number as a point of reference only. However, individual transcript sequences of the same gene can differ through naturally occurring variations (e.g. polymorphisms), each with its own valid existence. This clone is substantially in agreement with the reference, but a complete review of all prevailing variants is recommended prior to use. [More info](#)

OTI Annotation: This clone was engineered to express the complete ORF with an expression tag. Expression varies depending on the nature of the gene.

Components: The ORF clone is ion-exchange column purified and shipped in a 2D barcoded Matrix tube containing 10ug of transfection-ready, dried plasmid DNA (reconstitute with 100 ul of water).

Reconstitution Method:

1. Centrifuge at 5,000xg for 5min.
2. Carefully open the tube and add 100ul of sterile water to dissolve the DNA.
3. Close the tube and incubate for 10 minutes at room temperature.
4. Briefly vortex the tube and then do a quick spin (less than 5000xg) to concentrate the liquid at the bottom.
5. Store the suspended plasmid at -20°C. The DNA is stable for at least one year from date of shipping when stored at -20°C.

RefSeq: [NM_001258221.1](#), [NP_001245150.1](#)

RefSeq Size: 1715 bp

RefSeq ORF: 774 bp

Locus ID: 284252

UniProt ID: [Q719H9](#)

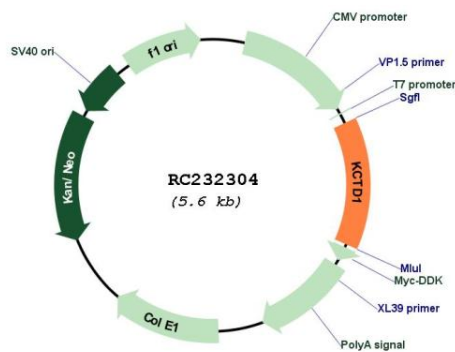
Cytogenetics: 18q11.2

Protein Families: Ion Channels: Other

MW: 29.4 kDa

Gene Summary: This gene encodes a protein containing a BTB (Broad-complex, tramtrack and bric a brac), also known as a POZ (POxvirus and zinc finger) protein-protein interaction domain. The encoded protein negatively regulates the AP-2 family of transcription factors and the Wnt signaling pathway. A mechanism for the modulation of Wnt signaling has been proposed in which the encoded protein enhances ubiquitination and degradation of the beta-catenin protein. Mutations in this gene have been identified in Scalp-ear-nipple (SEN) syndrome. [provided by RefSeq, May 2017]

Product images:



Circular map for RC232304