

Product datasheet for **RC232256**

CRF1 (CRHR1) (NM_001256299) Human Tagged ORF Clone

Product data:

Product Type:	Expression Plasmids
Product Name:	CRF1 (CRHR1) (NM_001256299) Human Tagged ORF Clone
Tag:	Myc-DDK
Symbol:	LINC02210-CRHR1
Synonyms:	CRHR1-IT1-CRHR1; MGC57346-CRHR1
Mammalian Cell Selection:	Neomycin
Vector:	pCMV6-Entry (PS100001)
E. coli Selection:	Kanamycin (25 ug/mL)
ORF Nucleotide Sequence:	>RC232256 representing NM_001256299 Red=Cloning site Blue=ORF Green=Tags(s)

TTTTGTAATACGACTCACTATAGGGCGGCCGGAATTCGTCGACTGGATCCGGTACCGAGGAGATCTGCC
GCC**CGATCGCC**

ATGAGCCCCGAGGTCCACCAGAGCAACGTGGGCTGGTGCAGGTTGGTGACAGCCGCCTACAACACTTCC
ATGTGACCAACTTCTTGGATGTTGCGCGAGGGCTGCTACCTGCACACAGCCATCGTGCTCACCTACTC
CACTGACCGGCTGCGCAAATGGATGTTTCATCTGCATTGGCTGGGGTGTGCCCTTCCCCATCATTGTGGCC
TGGGCCATTGGGAAGCTGTACTACGACAATGAGAAGTGTGGTTTGGCAAAGGCCTGGGGTGTACACCG
ACTACATCTACCAGGGCCCCATGATCCTGGTCCTGCTGATCAATTCATCTTCTTTTCAACATCGTCCG
CATCCTCATGACCAAGCTCCGGGCATCCACCACGTCTGAGACCATTAGTACAGGAAGGCTGTGAAAGCC
ACTCTGGTGTCTGCCCCCTCTGGGCATCACCTACATGCTGTTCTTCGTCAATCCCGGGGAGGATGAGG
TCTCCCGGGTCTTCTACTTCAACTCCTTCTGGAATCCTTCCAGGGCTTCTTTGTGTCTGTGTT
CTACTGTTTCTCAATAGTGAGGTCCGTTCTGCCATCCGGAAGAGGTGGCACCGGTGGCAGGACAAGCAC
TCGATCCGTGCCCGAGTGGCCCGTGCCATGTCCATCCCCACCTCCCCAACCCGTGTCAGCTTTCACAGCA
TCAAGCAGTCCACAGCAGTC

ACGCGTACGCGGCCGCTCGAGCAGAACTCATCTCAGAAGAGGATCTGGCAGCAAATGATATCTGGATT
ACAAGGATGACGACGATAAGGTTTAA



[View online »](#)

Protein Sequence: >RC232256 representing NM_001256299
 Red=Cloning site Green=Tags(s)

MSPEVHQSNVGCRLVTAAYNYFHVTNFFWMFEGEGCYLHTAIVLTYSTDRLRKWMFICIGWGVPPPIIVA
 WAIGKLYDNEKCFWFKRPGVYTDYIYQGMILVLLINFIFLFNIVRILMTKLRASTTSETIQYRKAVKA
 TLVLLPLLGITMFFVNPGEDEVSRVVFYFNSFLESFQGFVSVFYCLNSEVRSAIRKRWRHWQDKH
 SIRARVARAMSIPTSPTRVSVFHSIKQSTAV

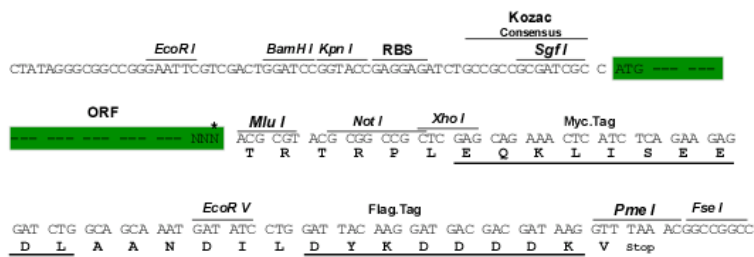
TRTRPLEQKLISEEDLAANDILDYKDDDDKV

Restriction Sites:

Sgfl-MluI

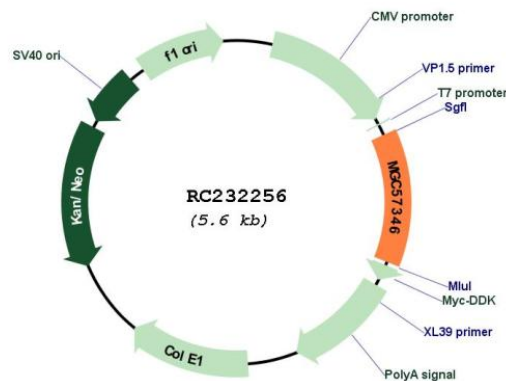
Cloning Scheme:

Cloning sites used for ORF Shuttling:



* The last codon before the Stop codon of the ORF

Plasmid Map:



ACCN: NM_001256299

ORF Size: 720 bp

OTI Disclaimer:	The molecular sequence of this clone aligns with the gene accession number as a point of reference only. However, individual transcript sequences of the same gene can differ through naturally occurring variations (e.g. polymorphisms), each with its own valid existence. This clone is substantially in agreement with the reference, but a complete review of all prevailing variants is recommended prior to use. More info
OTI Annotation:	This clone was engineered to express the complete ORF with an expression tag. Expression varies depending on the nature of the gene.
Components:	The ORF clone is ion-exchange column purified and shipped in a 2D barcoded Matrix tube containing 10ug of transfection-ready, dried plasmid DNA (reconstitute with 100 ul of water).
Reconstitution Method:	<ol style="list-style-type: none">1. Centrifuge at 5,000xg for 5min.2. Carefully open the tube and add 100ul of sterile water to dissolve the DNA.3. Close the tube and incubate for 10 minutes at room temperature.4. Briefly vortex the tube and then do a quick spin (less than 5000xg) to concentrate the liquid at the bottom.5. Store the suspended plasmid at -20°C. The DNA is stable for at least one year from date of shipping when stored at -20°C.
RefSeq:	NM_001256299.3
RefSeq Size:	2714 bp
RefSeq ORF:	723 bp
Locus ID:	104909134
UniProt ID:	P34998
Cytogenetics:	17q21.31
MW:	28.6 kDa
Gene Summary:	This locus represents naturally occurring readthrough transcription between neighboring genes CRHR1-IT1, CRHR1 intronic transcript 1 (Gene ID: 147081) and CRHR1, corticotropin releasing hormone receptor 1 (Gene ID: 1394) on chromosome 17. The readthrough transcript encodes a protein that shares sequence identity with the product of the CRHR1 gene. [provided by RefSeq, Dec 2016]