

## Product datasheet for RC232196

### TFPI2 (NM\_001271003) Human Tagged ORF Clone

#### Product data:

Product Type:	Expression Plasmids
Product Name:	TFPI2 (NM_001271003) Human Tagged ORF Clone
Tag:	Myc-DDK
Symbol:	TFPI2
Synonyms:	PP5; REF1; TFPI-2
Mammalian Cell Selection:	Neomycin
Vector:	pCMV6-Entry (PS100001)
E. coli Selection:	Kanamycin (25 ug/mL)
ORF Nucleotide Sequence:	>RC232196 representing NM_001271003 Red=Cloning site Blue=ORF Green=Tags(s)

TTTTGTAATACGACTCACTATAGGGCGGCCGGAATTCGTCGACTGGATCCGGTACCGAGGAGATCTGCC  
GCC**CGATCGCC**

ATGGACCCCGCTCGCCCCCTGGGGCTGTCGATTCTGCTGCTTTTCCTGACGGAGGCTGCACTGGGCGATG  
CTGCTCAGGAGCCAACAGACTACGGACCCTGCCGGGCCCTACTTCTCCGTTACTACTACGACAGGTACAC  
GCAGAGCTGCCGCCAGTTCCTGTACGGGGGCTGCGAGGGCAACGCCAACAATTTCTACACCTGGGAGGCT  
TGCGACGATGCTTGCTGGAGGATAGAAAAAGTTCCAAAGTTTGCCGGCTGCAAGTGAGTGTGGACGACC  
AGTGTGAGGGGTCCACAGAAAAGTATTTCTTTAATCTAAGTTCCATGACATGTGAAAAATCTTTTCCGG  
TGGGTGTACCGGAACCGGATTGAGAACAGGTTTCCAGATGAAGCTACTTGTATGGGCTTCTGCGCACCA  
AAGAAAATTCATCATTTTGCTACAGTCCAAAAGATGAGGGACTGTGCTCTGCCAATGTGACTCGCTATT  
ATTTTAATCCAAGATACAGAACCTGTGATGCTTTACCTATACTGGCTGTGGAGGGAATGACAATACTT  
TGTTAGCAGGGAGGATTGCAAACGTGCATGTGCAAAAGCTTTGAAAAAGAAAAGAAGATGCCAAAGCTT  
CGCTTTGCCAGTAGAATCCGAAAATTCGGAAGAAGCAATTT

**ACGCGT**ACGCGGCCGCTCGAGCAGAACTCATCTCAGAAGAGGATCTGGCAGCAAATGATATCCTGGATT  
ACAAGGATGACGACGATAAGGTTTAA


[View online »](#)

**Protein Sequence:** >RC232196 representing NM\_001271003

Red=Cloning site Green=Tags(s)

MDPARPLGLSILLFLTEAALGDAAEPTDYGPCRALLLRYYYDRYTQSCRQFLYGGCEGNANFYTWEA  
CDDACWRIEKVPKVCRLQVSVDDQCEGSTKEYFFNLSSMTEKFFSGGCHNRNIENRFPDEATCMGFCAP  
KKIPSCYSPKDEGLCSANVTRYFNPRYRTCAFTYTGCGGNDNFVSREDCKRACAKALKKKKMKPL  
RFASIRKIRKKOF

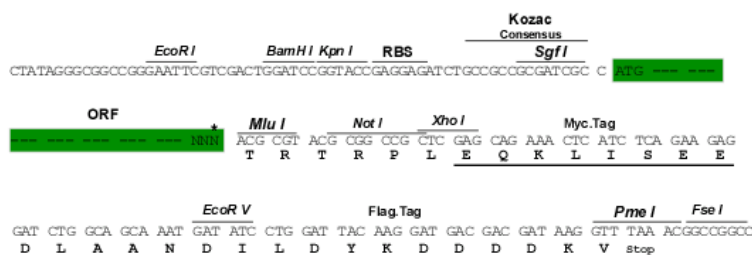
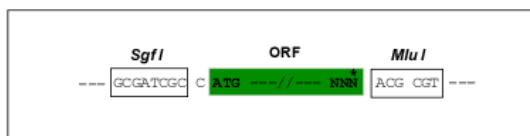
TRTRPLEOKLISEEDLAANDILDYKDDDDKV

**Restriction Sites:**

Sgfl-MluI

### Cloning Scheme:

Cloning sites used for ORF Shuttling:



\* The last codon before the Stop codon of the ORF

ACCN: NM 001271003

ORF Size: 672 bp

**OTI Disclaimer:** The molecular sequence of this clone aligns with the gene accession number as a point of reference only. However, individual transcript sequences of the same gene can differ through naturally occurring variations (e.g. polymorphisms), each with its own valid existence. This clone is substantially in agreement with the reference, but a complete review of all prevailing variants is recommended prior to use. [More info](#)

**OTI Annotation:** This clone was engineered to express the complete ORF with an expression tag. Expression varies depending on the nature of the gene.

**Components:** The ORF clone is ion-exchange column purified and shipped in a 2D barcoded Matrix tube containing 10ug of transfection-ready, dried plasmid DNA (reconstitute with 100 ul of water).

**Reconstitution Method:**

1. Centrifuge at 5,000xg for 5min.
2. Carefully open the tube and add 100ul of sterile water to dissolve the DNA.
3. Close the tube and incubate for 10 minutes at room temperature.
4. Briefly vortex the tube and then do a quick spin (less than 5000xg) to concentrate the liquid at the bottom.
5. Store the suspended plasmid at -20°C. The DNA is stable for at least one year from date of shipping when stored at -20°C.

**RefSeq:** [NM\\_001271003.2](#)

**RefSeq Size:** 2411 bp

**RefSeq ORF:** 675 bp

**Locus ID:** 7980

**UniProt ID:** [P48307](#)

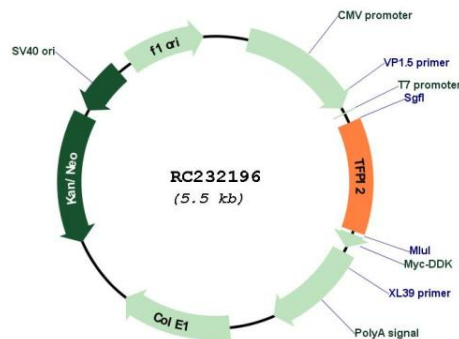
**Cytogenetics:** 7q21.3

**Protein Families:** Secreted Protein

**MW:** 26.2 kDa

**Gene Summary:** This gene encodes a member of the Kunitz-type serine proteinase inhibitor family. The protein can inhibit a variety of serine proteases including factor VIIa/tissue factor, factor Xa, plasmin, trypsin, chymotrypsin and plasma kallikrein. This gene has been identified as a tumor suppressor gene in several types of cancer. Alternative splicing results in multiple transcript variants. [provided by RefSeq, Aug 2012]

## Product images:



Circular map for RC232196