

Product datasheet for **RC232189**

Nucleotide binding protein like (NUBPL) (NM_001201573) Human Tagged ORF Clone

Product data:

Product Type:	Expression Plasmids
Product Name:	Nucleotide binding protein like (NUBPL) (NM_001201573) Human Tagged ORF Clone
Tag:	Myc-DDK
Symbol:	NUBPL
Synonyms:	C14orf127; hulnd1; IND1; MC1DN21
Vector:	pCMV6-Entry (PS100001)
E. coli Selection:	Kanamycin (25 ug/mL)
Cell Selection:	Neomycin
ORF Nucleotide Sequence:	>RC232189 representing NM_001201573 Red=Cloning site Blue=ORF Green=Tags(s)

TTTTGTAATACGACTCACTATAGGGCGGCCGGAATTCGTCGACTGGATCCGGTACCGAGGAGATCTGCC
GCC**GCGATCGCC**

ATGTCCAAGGCCATTGGTTTGTAGATGTGGATGTGTATGGACCTTCAGTTCCAAAGATGATGAATCTGA
AAGGAAATCCGGAATTATCACAGAGCAACCTAATGAGGCCTCTTGAATTATGGTATTGCTTGTATGTC
TATGGGCTTTCTGGTTGAAGAAAGTGAACCAAGTAGTTGGAGAGGCCTTATGGTAATGTCGCGCCATTGAG
AAATTGTTGAGGCAGGTAGATTGGGGTCAACTGGACTACTTAGTTGTAGACATGCCACCAGGAACCTGGAG
ATGTGCAGTTATCAGTCTCACAGAATATTCCTATAACAGGTGCTGTGATTGTCTCCACGCCCCAGGACAT
CGCATTGATGGATGCACACAAGGGTCTGAGATGTTTCGCAGAGTCCACGTGCCCGTCTTGGCCTTGTGTC
CAAACATGAGTGTTTTCCAGTGTCCAAAATGTAACACAAAACCTCATATTTTTGGTGCTGATGGTGCAA
GGAAACTAGCACAGACCTTGGTCTTGAAGTCTAGGAGACATTCCTTACACCTTAATATAAGGGAAGC
TTCAGATACAGGCCAGCCAATTGTGTTTCACAGCCTGAAAGTGATGAGGCCAAAGCTTACTTGAGGATT
GCTGTGGAAGTGGTAAGAAGATTGCCATCACCTTCAGAA

ACGCGTACGCGGCCGCTCGAGCAGAAACTCATCTCAGAAGAGGATCTGGCAGCAAATGATATCCTGGATT
ACAAGGATGACGACGATAAGGTTTAA



[View online »](#)

Protein Sequence: >RC232189 representing NM_001201573
 Red=Cloning site Green=Tags(s)

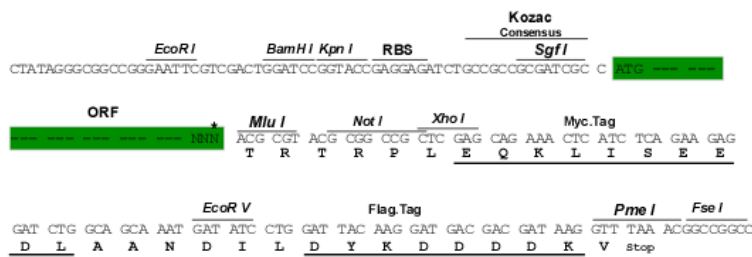
MSKAIGLLDVDVYGPSVPKMMNLKGNPELSQSNLMRPLLNYGIACMSMGFLVEESEPVVWRGLMVMSAIE
 KLLRQVDWQGLDYL VDMPPGTGDVQLSVSQNIPITGAVIVSTPQDIALMDA HKGAEMFRRVHVPLGLV
 QNMSV FQCPKCKHKTHIFGADGARKLAQTLGLEVLGDIPLHLNIREASDTGQPIVFSQPEDEAKAYLRI
 AVEVRRRLPSPSE

TRTRPLEQKLISEEDLAANDILDYKDDDDKV

Restriction Sites: SgfI-MluI

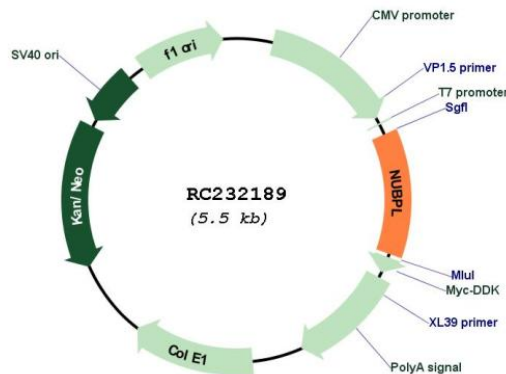
Cloning Scheme:

Cloning sites used for ORF Shuttling:



* The last codon before the Stop codon of the ORF

Plasmid Map:



ACCN: NM_001201573

ORF Size: 669 bp

OTI Disclaimer:	The molecular sequence of this clone aligns with the gene accession number as a point of reference only. However, individual transcript sequences of the same gene can differ through naturally occurring variations (e.g. polymorphisms), each with its own valid existence. This clone is substantially in agreement with the reference, but a complete review of all prevailing variants is recommended prior to use. More info
OTI Annotation:	This clone was engineered to express the complete ORF with an expression tag. Expression varies depending on the nature of the gene.
Components:	The ORF clone is ion-exchange column purified and shipped in a 2D barcoded Matrix tube containing 10ug of transfection-ready, dried plasmid DNA (reconstitute with 100 ul of water).
Reconstitution Method:	<ol style="list-style-type: none">1. Centrifuge at 5,000xg for 5min.2. Carefully open the tube and add 100ul of sterile water to dissolve the DNA.3. Close the tube and incubate for 10 minutes at room temperature.4. Briefly vortex the tube and then do a quick spin (less than 5000xg) to concentrate the liquid at the bottom.5. Store the suspended plasmid at -20°C. The DNA is stable for at least one year from date of shipping when stored at -20°C.
RefSeq:	NM_001201573.1 , NP_001188502.1
RefSeq Size:	2836 bp
RefSeq ORF:	672 bp
Locus ID:	80224
UniProt ID:	Q8TB37
Cytogenetics:	14q12
MW:	24.9 kDa
Gene Summary:	This gene encodes a member of the Mrp/NBP35 ATP-binding proteins family. The encoded protein is required for the assembly of the respiratory chain NADH dehydrogenase (complex I), an oligomeric enzymatic complex located in the inner mitochondrial membrane. Mutations in this gene cause mitochondrial complex I deficiency. Alternative splicing results in multiple transcript variants. [provided by RefSeq, May 2014]