

Product datasheet for **RC232175**

MFF (NM_001277065) Human Tagged ORF Clone

Product data:

Product Type:	Expression Plasmids
Product Name:	MFF (NM_001277065) Human Tagged ORF Clone
Tag:	Myc-DDK
Symbol:	MFF
Synonyms:	C2orf33; EMPF2; GL004
Vector:	pCMV6-Entry (PS100001)
E. coli Selection:	Kanamycin (25 ug/mL)
Cell Selection:	Neomycin
ORF Nucleotide Sequence:	>RC232175 representing NM_001277065 Red=Cloning site Blue=ORF Green=Tags(s)

TTTTGTAATACGACTCACTATAGGGCGGCCGGAATTCGTCGACTGGATCCGGTACCGAGGAGATCTGCC
GCC**CGATCGCC**

ATGGCAGAAATTAGTCGAATTCAGTACGAAATGGAATATACTGAAGGCATTAGTCAGCGAATGAGGGTCC
CAGAAAAGTTAAAAGTAGCACCGCCAAACGCTGACCTGGAACAAGGATTCCAAGAAGGAGTTCCAAATGC
TAGTGTGATAATGCAAGTCCGGAGAGGATTGTTGTAGCAGGAAATAATGAAGATGTTTCATTTTCAAGA
CCAGCAGATCTTGACCTTATTCAGTCAACTCCCTTTAAACCCCTGGCACTGAAAACACCCTCGTGTAC
TTACGCTGAGTGAAGACCACTAGATTTTCTGGATTTAGAAAGACCTCCTACAACCCCTCAAATGAAGA
AATCCGAGCAGTTGGCAGACTAAAAGAGAGCGGTCTATGAGTAAAAATGCTGTTTCGCAAAAATGGACAG
CTGGTCAGAAATGATTCTCTGTATGGCATTTCAAATATAGATACAACCATTGAAGGAACGTCAGATGACC
TGACTGTTGTAGATGCAGCTTCACTAAGACGACAGATAATCAAATAAATAGACGCTTACAACCTTCTGGA
AGAGGAGAACAAGAACGTGCTAAAAGAGAAATGGTCATGTATTCAATTACTGTAGCTTTCTGGCTGCTT
AATAGCTGGCTCTGTTTCGCCGC

ACGCGTACGCGGCCGCTCGAGCAGAACTCATCTCAGAAGAGGATCTGGCAGCAAATGATATCCTGGATT
ACAAGGATGACGACGATAAGGTTTAA



[View online »](#)

Protein Sequence: >RC232175 representing NM_001277065
 Red=Cloning site Green=Tags(s)

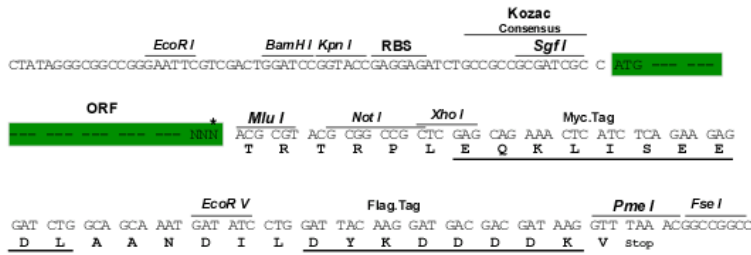
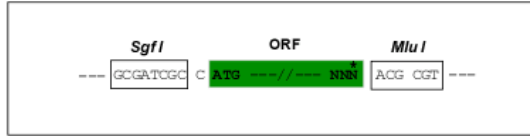
MAEISRIQYEMEYTEGISQRMRVPEKLVAPPNADLEQGFQEGVFNASVIMQVPERIVVAGNNEDVSFSR
 PADLDLIQSTPFKPLALKTPPRVLTLSERPLDFLDERPPTTPQNEEIRAVGRLKRERSMSENVRQNGQ
 LVRNDSLGI SNIDTTIEGTSDLLTVVDAASLRQI I I KLNRRLLQLEENKERAKREVMYSITVAFWLL
 NSWLWFRR

TRTRPLEQKLISEEDLAANDILDYKDDDDKV

Restriction Sites: Sgfl-MluI

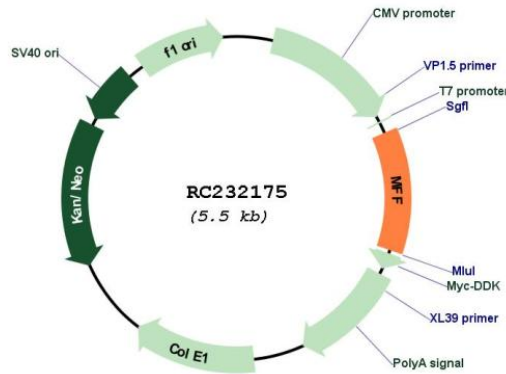
Cloning Scheme:

Cloning sites used for ORF Shuttling:



* The last codon before the Stop codon of the ORF

Plasmid Map:



ACCN: NM_001277065

ORF Size: 654 bp

OTI Disclaimer:	The molecular sequence of this clone aligns with the gene accession number as a point of reference only. However, individual transcript sequences of the same gene can differ through naturally occurring variations (e.g. polymorphisms), each with its own valid existence. This clone is substantially in agreement with the reference, but a complete review of all prevailing variants is recommended prior to use. More info
OTI Annotation:	This clone was engineered to express the complete ORF with an expression tag. Expression varies depending on the nature of the gene.
Components:	The ORF clone is ion-exchange column purified and shipped in a 2D barcoded Matrix tube containing 10ug of transfection-ready, dried plasmid DNA (reconstitute with 100 ul of water).
Reconstitution Method:	<ol style="list-style-type: none">1. Centrifuge at 5,000xg for 5min.2. Carefully open the tube and add 100ul of sterile water to dissolve the DNA.3. Close the tube and incubate for 10 minutes at room temperature.4. Briefly vortex the tube and then do a quick spin (less than 5000xg) to concentrate the liquid at the bottom.5. Store the suspended plasmid at -20°C. The DNA is stable for at least one year from date of shipping when stored at -20°C.
RefSeq:	NM_001277065.2
RefSeq Size:	1805 bp
RefSeq ORF:	657 bp
Locus ID:	56947
UniProt ID:	Q9GZY8
Cytogenetics:	2q36.3
Protein Families:	Transmembrane
MW:	25.5 kDa
Gene Summary:	This is a nuclear gene encoding a protein that functions in mitochondrial and peroxisomal fission. The encoded protein recruits dynamin-1-like protein (DNM1L) to mitochondria. There are multiple pseudogenes for this gene on chromosomes 1, 5, and X. Alternative splicing results in multiple transcript variants. [provided by RefSeq, Mar 2013]