

Product datasheet for **RC232168**

RPL10 (NM_001256577) Human Tagged ORF Clone

Product data:

Product Type: Expression Plasmids
Product Name: RPL10 (NM_001256577) Human Tagged ORF Clone
Tag: Myc-DDK
Symbol: RPL10
Synonyms: AUTSX5; DXS648; DXS648E; L10; MRXS35; NOV; QM
Vector: pCMV6-Entry (PS100001)
E. coli Selection: Kanamycin (25 ug/mL)
Cell Selection: Neomycin
ORF Nucleotide Sequence: >RC232168 representing NM_001256577
Red=Cloning site Blue=ORF Green=Tags(s)

TTTTGTAATACGACTCACTATAGGGCGCCGGAATTCGTCGACTGGATCCGGTACCGAGGAGATCTGCC
GCC**CGGATCGCC**

ATGGGCCGCCGCCCGCCGTTGTTACCGGTATTGTAAGAACAAGCCGTACCCAAAGTCTCGTTCTGCC
GAGGTGTCCTGATGCCAAGATTCGATTTTTGACCTGGGGCGGAAAAAGGCAAAAGTGGATGAGTTTCC
GCTTTGTGGCCACATGGTGTGAGATGAATATGAGCAGCTGTCTCTGAAGCCCTGGAGGCTGCCCGAATT
TGTGCCAATAAGTACATGGTAAAAAGTTGTGGCAAAGATGGCTTCCATATCCGGGTGCGGCTCCACCCCT
TCCACGTCATCCGCATCAACAAGATGTTGTCTGTGCTGGGGCTGACAGATCCACATCTCAAGAAGTGG
GGCTTACCAAGTTCAATGCTGATGAATTTGAAGACATGGTGGCTGAAAAGCGGCTCATCCAGATGGCT
GTGGGGTCAAGTACATCCCAATCGTGGCCCTCTGGACAAGTGGCGGGCCCTGCACTCATGAGGGCTTCC
AATGTGCTGCCCCCTCTTAATACTACCAATAAATTCTACTTCTGTCCACCTATGTCTTTGTATCTAC
ATTCTTGACGGGAAGGAACCTTCTGGAACCTTTGGGTCATTGCCCTTTCACCTCAGAAACAGGTTG
ACAACTCAGCCCTGCTCA

ACGCGTACGCGGCCGCTCGAGCAGAACTCATCTCAGAAGAGGATCTGGCAGCAAATGATATCCTGGATT
ACAAGGATGACGACGATAAGGTTTAA



[View online »](#)

Protein Sequence: >RC232168 representing NM_001256577
 Red=Cloning site Green=Tags(s)

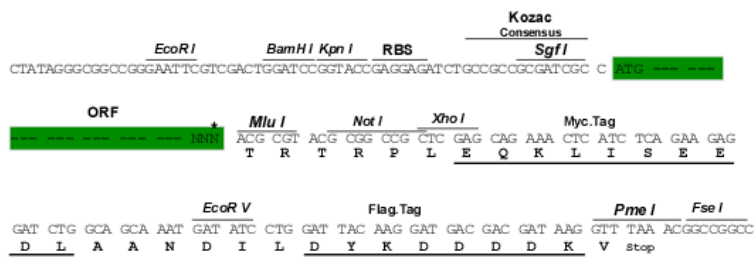
MGRRPARCYRYCKNKYPKSRFCRGVPAKIRIFDLGRKKAKVDFPLCGHMVSDEYEQLSSEALEAARI
 CANKYMKVSCGKDGFIHVRVLPFHVIRINKMLSCAGADRSTSQRSGASPSMLMNLKTWWLKSGSSQMA
 VGSSTSPIVALWTSGGPCTHEGFQCAAPLLILTNKFYFLSTYVVFVSTFLTGKELPLGTGFSLPFHFRNRL
 TTQPCS

TRTRPLEQKLISEEDLAANDILDYKDDDDKV

Restriction Sites: Sgfl-MluI

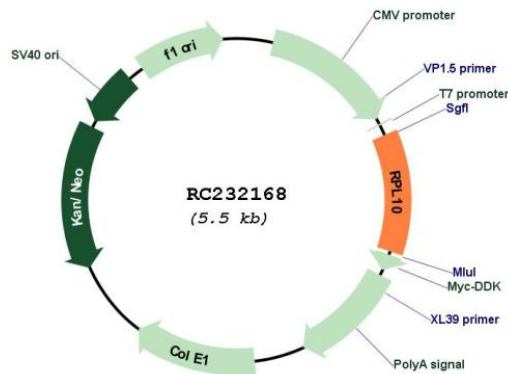
Cloning Scheme:

Cloning sites used for ORF Shuttling:



* The last codon before the Stop codon of the ORF

Plasmid Map:



ACCN: NM_001256577

ORF Size: 648 bp

OTI Disclaimer:	The molecular sequence of this clone aligns with the gene accession number as a point of reference only. However, individual transcript sequences of the same gene can differ through naturally occurring variations (e.g. polymorphisms), each with its own valid existence. This clone is substantially in agreement with the reference, but a complete review of all prevailing variants is recommended prior to use. More info
OTI Annotation:	This clone was engineered to express the complete ORF with an expression tag. Expression varies depending on the nature of the gene.
Components:	The ORF clone is ion-exchange column purified and shipped in a 2D barcoded Matrix tube containing 10ug of transfection-ready, dried plasmid DNA (reconstitute with 100 ul of water).
Reconstitution Method:	<ol style="list-style-type: none">1. Centrifuge at 5,000xg for 5min.2. Carefully open the tube and add 100ul of sterile water to dissolve the DNA.3. Close the tube and incubate for 10 minutes at room temperature.4. Briefly vortex the tube and then do a quick spin (less than 5000xg) to concentrate the liquid at the bottom.5. Store the suspended plasmid at -20°C. The DNA is stable for at least one year from date of shipping when stored at -20°C.
RefSeq:	NM_001256577.1 , NP_001243506.1
RefSeq Size:	2172 bp
RefSeq ORF:	651 bp
Locus ID:	6134
UniProt ID:	P27635
Cytogenetics:	Xq28
Protein Families:	Druggable Genome
Protein Pathways:	Ribosome
MW:	24.6 kDa
Gene Summary:	This gene encodes a ribosomal protein that is a component of the 60S ribosome subunit. The related protein in chicken can bind to c-Jun and can repress c-Jun-mediated transcriptional activation. Some studies have detected an association between variation in this gene and autism spectrum disorders, though others do not detect this relationship. There are multiple pseudogenes of this gene dispersed throughout the genome. Alternative splicing results in multiple transcript variants. [provided by RefSeq, Jan 2015]