

## Product datasheet for **RC231989**

### SR1 (SRI) (NM\_001256892) Human Tagged ORF Clone

#### Product data:

**Product Type:** Expression Plasmids  
**Product Name:** SR1 (SRI) (NM\_001256892) Human Tagged ORF Clone  
**Tag:** Myc-DDK  
**Symbol:** SR1  
**Synonyms:** CP-22; CP22; SCN; V19  
**Mammalian Cell Selection:** Neomycin  
**Vector:** pCMV6-Entry (PS100001)  
**E. coli Selection:** Kanamycin (25 ug/mL)  
**ORF Nucleotide Sequence:** >RC231989 representing NM\_001256892  
Red=Cloning site Blue=ORF Green=Tags(s)

TTTTGTAATACGACTCACTATAGGGCGGCCGGAATTCGTCGACTGGATCCGGTACCGAGGAGATCTGCC  
GCC**CGCATCGCC**

ATGCAGTATGGAGGGCTCCCGGAGGGCTGCGTTTCCCGGACAACTCAGGATCCGCTGTATGGTTACT  
TTGCTGCTGTAGCTGGACAGGATGGGCAGATAGATGCTGATGAATTGCAGAGATGCTGACACAGTCTGG  
CATTGCTGGAGGATACAAACCTTTAACCTGGAGACTTCCCGCTTATGGTTTCAATGCTGGATAGAGAT  
ATGCTGGCACAATGGGTTTCAATGAATTTAAAGAAGCTCTGGGCTGTACTGAATGGCTGGAGACAACACT  
TTATCAGTTTTGACACTGACAGGAGTGGACAGTAGACCCACAAGAATTGCAGAAGGCCCTGACAACAAT  
GGGATTTAGTTGAGTCCCAGGCTGTGAATTCATTGCAAAACGATACAGCACCAATGGAAGATCACC  
TTCGACGACTACATCGCCTGCTGCGTCAAAGTGGGGCTTTACAGACAGCTTTCGAAGACGGGATACTG  
CTCAGCAAGGTGTTGTGAATTTCCCATATGATGATGTAAGTCTTAGAAAT

**ACGCGT**ACGCGGCCGCTCGAGCAGAACTCATCTCAGAAGAGGATCTGGCAGCAAATGATATCCTGGATT  
ACAAGGATGACGACGATAAGGTTTAA

**Protein Sequence:** >RC231989 representing NM\_001256892  
Red=Cloning site Green=Tags(s)

MQYGGAPGGPAPFPQGTQDPLYGYFAAVAGQDGGQIDADELQRCLTQSGIAGGYKPFNLETCLRMVMSMLDRD  
MSGTMGFNEFKELWAVLNGWRQHFISFDTDRSGTVDPQELQKALTTMGFRLSPQAVNSIAKRYSTNGKIT  
FDDYIACCVKLRALTDSFRRRDTAQQGVVNFYDDVSLRN

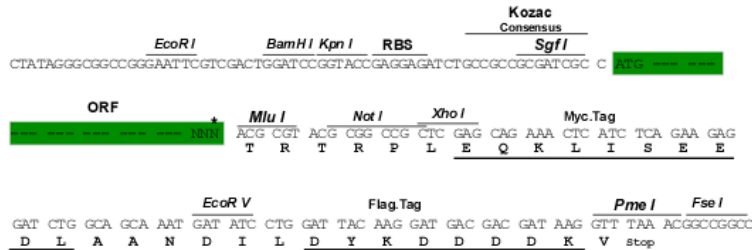
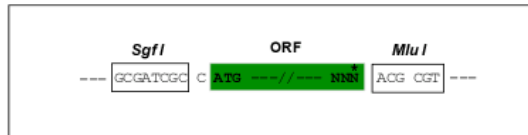
**TR**TRPLEQKLISEEDLAANDILDYKDDDDKV

**Restriction Sites:** Sgfl-MluI



**Cloning Scheme:**

Cloning sites used for ORF Shuttling:



\* The last codon before the Stop codon of the ORF

**ACCN:** NM\_001256892

**ORF Size:** 540 bp

**OTI Disclaimer:** The molecular sequence of this clone aligns with the gene accession number as a point of reference only. However, individual transcript sequences of the same gene can differ through naturally occurring variations (e.g. polymorphisms), each with its own valid existence. This clone is substantially in agreement with the reference, but a complete review of all prevailing variants is recommended prior to use. [More info](#)
**OTI Annotation:** This clone was engineered to express the complete ORF with an expression tag. Expression varies depending on the nature of the gene.

**Components:** The ORF clone is ion-exchange column purified and shipped in a 2D barcoded Matrix tube containing 10ug of transfection-ready, dried plasmid DNA (reconstitute with 100 ul of water).

**Reconstitution Method:**

1. Centrifuge at 5,000xg for 5min.
2. Carefully open the tube and add 100ul of sterile water to dissolve the DNA.
3. Close the tube and incubate for 10 minutes at room temperature.
4. Briefly vortex the tube and then do a quick spin (less than 5000xg) to concentrate the liquid at the bottom.
5. Store the suspended plasmid at -20°C. The DNA is stable for at least one year from date of shipping when stored at -20°C.

**RefSeq:** [NM\\_001256892.1](#), [NP\\_001243821.1](#)
**RefSeq Size:** 908 bp

**RefSeq ORF:** 543 bp

**Locus ID:** 6717

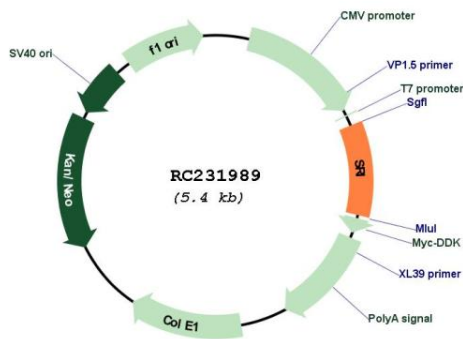
**UniProt ID:** [P30626](#)
**Cytogenetics:** 7q21.12

**Protein Families:** Druggable Genome

**MW:** 20.5 kDa

**Gene Summary:** This gene encodes a calcium-binding protein with multiple E-F hand domains that relocates from the cytoplasm to the sarcoplasmic reticulum in response to elevated calcium levels. In addition to regulating intracellular calcium homeostasis it also modulates excitation-contraction coupling in the heart. Alternative splicing results in multiple transcript variants encoding distinct proteins. Multiple pseudogenes exist for this gene. [provided by RefSeq, Mar 2012]

**Product images:**



Circular map for RC231989