

Product datasheet for RC231962

RAB5B (NM_001252037) Human Tagged ORF Clone

Product data:

Product Type:	Expression Plasmids
Product Name:	RAB5B (NM_001252037) Human Tagged ORF Clone
Tag:	Myc-DDK
Symbol:	RAB5B
Vector:	pCMV6-Entry (PS100001)
E. coli Selection:	Kanamycin (25 ug/mL)
Cell Selection:	Neomycin
ORF Nucleotide Sequence:	>RC231962 representing NM_001252037 Red=Cloning site Blue=ORF Green=Tags(s)

TTTTGTAATACGACTCACTATAGGGCGGCCGGAATTCGTCGACTGGATCCGGTACCGAGGAGATCTGCC
GCCGCGATCGCC

ATGACTAGCAGAAGCACAGCTAGGCCCAATGGGCAACCCAGGCCAGCAAATTTGCCAGTTCAAATTTGG
TCCTGCTGGGAGAATCTGCAGTGGGAAAGTCAAGCCTGGTATTACGTTTTGTCAAAGGGCAGTCCATGA
GTACCAGGAGAGCACATTGGAGCGGCCCTCCTCACCCAGTCCGTTTGTCTAGATGACACAACAGTGAAG
TTTGAGATCTGGGACACAGCTGGGAGGAGCGATATCACAGCTTAGCCCCATGTACTACAGGGGTGCC
AAGCTGCAATCGTGGTTTACGACATTAATCAGGAGGCCAGGCATATGCAGATGACAACAGCTTATT
GTTTCATGGAGACTTCAGCCAAGACAGCTATGAACGTGAATGATCTCTTCTGGCAATAGCTAAGAAGTTG
CCAAAGAGTGAACCCAGAATCTGGGAGGTGCAGCAGGCCGAAGCCGGGTGTGGATCTCCATGAACAGT
CCCAGCAGAACAAGAGCCAGTGTGTAGCAAC

ACGCGTACGCGGCCGCTCGAGCAGAACTCATCTCAGAAGAGGATCTGGCAGCAAATGATATCCTGGATT
ACAAGGATGACGACGATAAGGTTTAA

Protein Sequence:	>RC231962 representing NM_001252037 Red=Cloning site Green=Tags(s)
-------------------	---

MTSRSTARPNQPPQASKICQFKLVLLGESAVGKSSLVLRVFKGQFHEYQESTIGAAFLTQSVCLDDTTVK
FEIWDTAGQERYHSLAPMYRGAQAAIVVYDITNQEAYADDNSLLFMETSAKTAMNVNDLFLAIKKL
PKSEPQNLGGAAGRSRGVDLHEQSQQNKSQCCSN

TRTRPLEQKLI SEEDLAANDILDYKDDDDKV

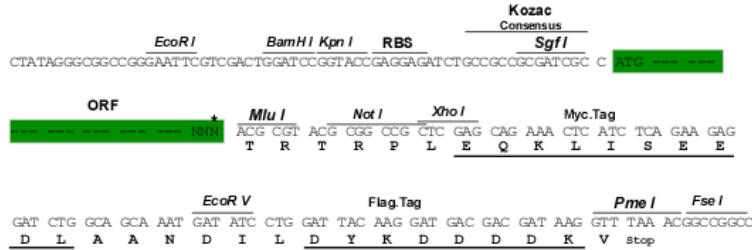
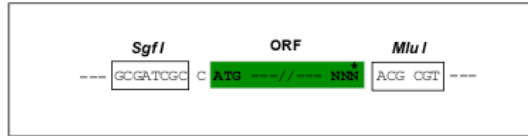
Restriction Sites:	Sgfl-MluI
--------------------	-----------



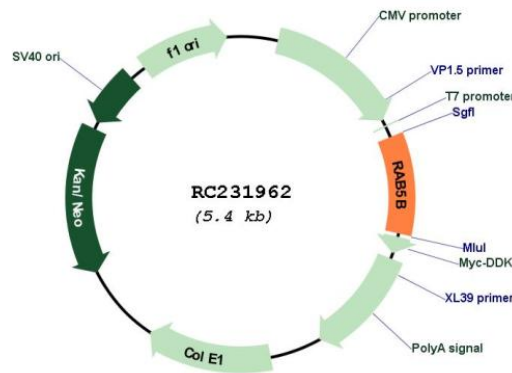
[View online »](#)

Cloning Scheme:

Cloning sites used for ORF Shuttling:



* The last codon before the Stop codon of the ORF

Plasmid Map:

ACCN: NM_001252037

ORF Size: 522 bp

OTI Disclaimer: The molecular sequence of this clone aligns with the gene accession number as a point of reference only. However, individual transcript sequences of the same gene can differ through naturally occurring variations (e.g. polymorphisms), each with its own valid existence. This clone is substantially in agreement with the reference, but a complete review of all prevailing variants is recommended prior to use. [More info](#)
OTI Annotation: This clone was engineered to express the complete ORF with an expression tag. Expression varies depending on the nature of the gene.

Components:	The ORF clone is ion-exchange column purified and shipped in a 2D barcoded Matrix tube containing 10ug of transfection-ready, dried plasmid DNA (reconstitute with 100 ul of water).
Reconstitution Method:	<ol style="list-style-type: none">1. Centrifuge at 5,000xg for 5min.2. Carefully open the tube and add 100ul of sterile water to dissolve the DNA.3. Close the tube and incubate for 10 minutes at room temperature.4. Briefly vortex the tube and then do a quick spin (less than 5000xg) to concentrate the liquid at the bottom.5. Store the suspended plasmid at -20°C. The DNA is stable for at least one year from date of shipping when stored at -20°C.
RefSeq:	<u>NM_001252037.1, NP_001238966.1</u>
RefSeq Size:	5217 bp
RefSeq ORF:	525 bp
Locus ID:	5869
UniProt ID:	<u>P61020</u>
Cytogenetics:	12q13.2
Protein Families:	Druggable Genome
Protein Pathways:	Endocytosis
MW:	19.5 kDa
Gene Summary:	Protein transport. Probably involved in vesicular traffic (By similarity).[UniProtKB/Swiss-Prot Function]