

## Product datasheet for **RC231769**

### Brk (PTK6) (NM\_001256358) Human Tagged ORF Clone

#### Product data:

**Product Type:** Expression Plasmids  
**Product Name:** Brk (PTK6) (NM\_001256358) Human Tagged ORF Clone  
**Tag:** Myc-DDK  
**Symbol:** PTK6  
**Synonyms:** BRK  
**Vector:** pCMV6-Entry (PS100001)  
**E. coli Selection:** Kanamycin (25 ug/mL)  
**Cell Selection:** Neomycin  
**ORF Nucleotide Sequence:** >RC231769 representing NM\_001256358  
**Red**=Cloning site **Blue**=ORF **Green**=Tags(s)

TTTTGTAATACGACTCACTATAGGGCGGCCGGAATTCGTCGACTGGATCCGGTACCGAGGAGATCTGCC  
GCC**CGGATCGCC**

**ATGGTGTCCCGGGACCAGGCTCACCTGGGCCCAAGTATGTGGGCTCTGGGACTTCAAGTCCCGGACGG**  
**ACGAGGAGCTGAGCTTCCGCGCGGGGACGTCTCCACGTGGCCAGGAAGGAGGAGCAGTGGTGGTGGGC**  
**CACGCTGTGGACGAGGCGGGTGGGGCCGTGGCCAGGGCTATGTGCCCCAACACTACCTGGCCGAGAGG**  
**GAGACGGTGGAGTCGGAACCTGCGGGACACGAGGCTGTGCGGCACTACAAGATCTGGCGCGTGC**  
**GGCCGGTGCACCTGAACGAGGCGGTGTCTTCTCAGCCTGCCCGAGCTTGTGAACACACAGGGCCC**  
**AGAGCCTGTCCCAGGCCTGCGGCTGGCCGCGCCTGCCGGAAGCACGAGCC**

**ACGCGT**ACGCGGCCGCTCGAGCAGAACTCATCTCAGAAGAGGATCTGGCAGCAAATGATATCCTGGATT  
ACAAGGATGACGACGATAAGGTTTAA

**Protein Sequence:** >RC231769 representing NM\_001256358  
**Red**=Cloning site **Green**=Tags(s)

MVSRDQAHLGPKYVGLWDFKSRTDEELSFRAQDVHFHVARKEEQWWWATLLDEAGGAVAQGYVPHNYLAER  
ETVESEPAHGCAALQDLAACRGAAPERGGVLPQPARACELPQGPEVPRPAAGRALPEARA

**TRTRPLEQKLI**SEEDLAANDILDYKDDDDKV

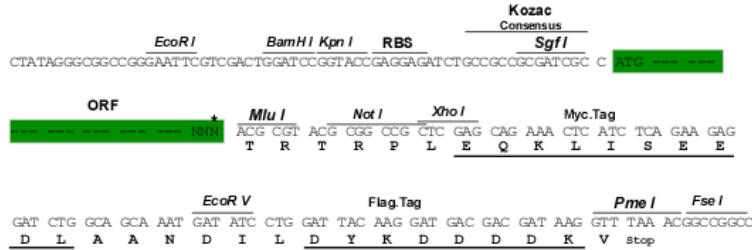
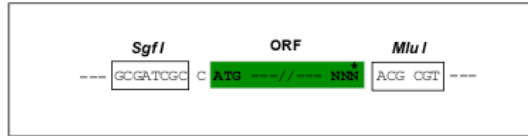
**Restriction Sites:** Sgfl-MluI



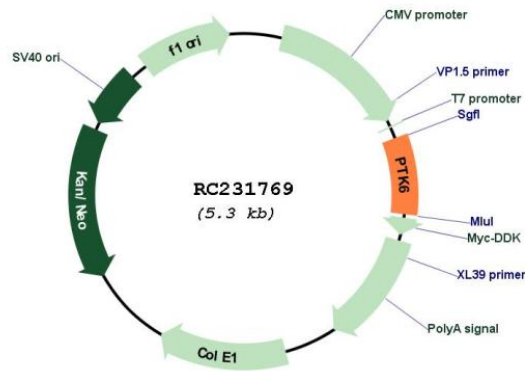
[View online »](#)

**Cloning Scheme:**

Cloning sites used for ORF Shuttling:



\* The last codon before the Stop codon of the ORF

**Plasmid Map:**

**ACCN:**

NM\_001256358

**ORF Size:**

402 bp

**OTI Disclaimer:**

The molecular sequence of this clone aligns with the gene accession number as a point of reference only. However, individual transcript sequences of the same gene can differ through naturally occurring variations (e.g. polymorphisms), each with its own valid existence. This clone is substantially in agreement with the reference, but a complete review of all prevailing variants is recommended prior to use. [More info](#)

<b>OTI Annotation:</b>	This clone was engineered to express the complete ORF with an expression tag. Expression varies depending on the nature of the gene.
<b>Components:</b>	The ORF clone is ion-exchange column purified and shipped in a 2D barcoded Matrix tube containing 10ug of transfection-ready, dried plasmid DNA (reconstitute with 100 ul of water).
<b>Reconstitution Method:</b>	<ol style="list-style-type: none"><li>1. Centrifuge at 5,000xg for 5min.</li><li>2. Carefully open the tube and add 100ul of sterile water to dissolve the DNA.</li><li>3. Close the tube and incubate for 10 minutes at room temperature.</li><li>4. Briefly vortex the tube and then do a quick spin (less than 5000xg) to concentrate the liquid at the bottom.</li><li>5. Store the suspended plasmid at -20°C. The DNA is stable for at least one year from date of shipping when stored at -20°C.</li></ol>
<b>RefSeq:</b>	<u><a href="#">NM_001256358.1</a></u> , <u><a href="#">NP_001243287.1</a></u>
<b>RefSeq Size:</b>	2413 bp
<b>RefSeq ORF:</b>	405 bp
<b>Locus ID:</b>	5753
<b>UniProt ID:</b>	<u><a href="#">Q13882</a></u>
<b>Cytogenetics:</b>	20q13.33
<b>Protein Families:</b>	Druggable Genome, Protein Kinase, Secreted Protein
<b>MW:</b>	14.9 kDa
<b>Gene Summary:</b>	The protein encoded by this gene is a cytoplasmic nonreceptor protein kinase which may function as an intracellular signal transducer in epithelial tissues. Overexpression of this gene in mammary epithelial cells leads to sensitization of the cells to epidermal growth factor and results in a partially transformed phenotype. Expression of this gene has been detected at low levels in some breast tumors but not in normal breast tissue. The encoded protein has been shown to undergo autophosphorylation. Alternative splicing results in multiple transcript variants. [provided by RefSeq, Jan 2012]