

## Product datasheet for RC231495

### LY75 (LY75-CD302) (NM\_001198759) Human Tagged ORF Clone

#### Product data:

Product Type:	Expression Plasmids
Product Name:	LY75 (LY75-CD302) (NM_001198759) Human Tagged ORF Clone
Tag:	Myc-DDK
Symbol:	LY75-CD302
Synonyms:	CD205; CLEC13B; DEC-205; gp200-MR6; Ly-75; LY75
Mammalian Cell Selection:	Neomycin
Vector:	pCMV6-Entry (PS100001)
E. coli Selection:	Kanamycin (25 ug/mL)
ORF Nucleotide Sequence:	>RC231495 representing NM_001198759 Red=Cloning site Blue=ORF Green=Tags(s)

TTTTGTAATACGACTCACTATAGGGCGGCCGGGAATTCGTCGACTGGATCCGGTACCGAGGAGATCTGCCGCCCGCATCGCC

ATGAGGACAGGCTGGGCGACCCCTCGCCGCCGGCGGGGCTCCTCATGCTGCTCTTCTGGTTCTTCGATC  
TCGCGGAGCCCTCTGGCCGCGCAGCTAATGACCCCTTACCATCGTCCATGGAATACGGGCAAGTGCAT  
CAAGCCAGTGTATGGCTGGATAGTAGCAGACGACTGTGATGAACTGAGGACAAGTTATGGAAGTGGGTG  
TCCAGCATCGGCTCTTTCATTTGCACTCCAAAAGTGCCTTGGCTCGATATTACAAAATCGGTAATG  
AGCTGAGAATGTTTCAGCTGTGACTCCAGTGCCATGCTGTGGTGGAAATGTGAGCACCCTCTGTACGG  
AGCTGCCCGGTACCGGCTGGCTCTGAAGGATGGACATGGCACAGCAATCTCAAATGCATCTGATGTCTGG  
AAGAAAGGAGGCTCAGAGGAAAGCCTTTGTGACCAGCCTTATCATGAGATCTATACCAGAGATGGAACT  
CTTATGGGAGACCTTGTGAATTTCCATTCTAATTGATGGGACCTGGCATCATGATTGCATTCTTGATGA  
AGATCATAGTGGGCCATGGTGTGCCACCACCTAAATTGAATATGACCGAAAGTGGGGCATCTGCTTA  
AAGCCTGAAAACGGTTGTGAAGATAATTGGGAAAAGAAGCAGTGGTGGAAAGTTGCTACCAATTTAATA  
CTCAGACGGCTCTTCTTGAAAGAAGCTTATGTTTCATGTCAGAATCAAGGAGCTGATTACTGAGCAT  
CAACAGTGTCTGAATTAACCTAACCTAAAGAAAAGAAGGCATTGCTAAGATTTCTGGATTGGTTTA  
AATCAGTATACTCTGCTAGAGGCTGGGAATGGTCAGACCACAACCATTAACTTCTCAACTGGGATC  
CAGACAGGCCAGTGCACCTACTATAGGTGGCTCCAGCTGTGCAAGAATGGATGCTGAGTCTGGTCTGTG  
GCAGAGCTTTTCTGTGAAGCTCAACTGCCTATGTCTGCAGGAAACCATTAAATAATACAGTGGAGTTA  
ACAGATGTCTGGACATACTCAGATACCCGCTGTGATGCAGGCTGGCTGCCAAATAATGGATTTTGTATC  
TGCTGGTAAATGAAAGTAATTCCTGGGATAAGGCACATGCGAAATGCAAAGCCTTCAGTAGTGACCTAAT  
CAGCATTCTCTAGCAGATGTGGAGGTGGTTGTCACAAAACCTCATAATGAGGATATCAAAGAAGAA  
GTGTGGATAGGCCTTAAGAACATAAACATAACCACTTTATTTTCAGTGGTCCAGTGGTACTGAAGTTACTC  
TAACATATTGGGATGAGAATGAGCCAAATGTTCCCTACAATAAGACGCCCAACTGTGTTTCTACTTAGG  
AGAGCTAGGTCAGTGAAAGTCCAATCATGTGAGGAGAACTAAAATATGTATGCAAGAGAAAGGGAGAA



[View online »](#)

AAACTGAATGACGCAAGTTCTGATAAGATGTGTCTCCAGATGAGGGCTGGAAGAGACATGGAGAAACCT  
GTTACAAGATTTATGAGGATGAGGTCCCTTTTGGAACTGCAATCTGACTATCACTAGCAGATTTGA  
GCAAGAATACCTAAATGATTTGATGAAAAAGTATGATAAATCTCTAAGAAAACTTCTGGACTGGCCTG  
AGAGATGTAGATTCTTGTGGAGAGTAACTGGGCAACTGTTGGTGAAGAAGGCGGGCTGTAACTTTT  
CCAAGTGAATTTTCTTGAGCCAGCTTCCCGGGCGGCTGCGTGGCTATGTCTACTGAAAGTCTGTTGG  
AAAGTGGGAGTGAAGGACTGCAGAAGCTTCAAAGCACTTCAATTTGCAAGAAAATGAGTGGACCCCTT  
GGCCTGAAGAAGCATCCCCTAAGCCTGATGACCCCTGTCTGAAGGCTGGCAGAGTTTCCCGCAAGTC  
TTTCTTGTATAAGGTATTCATGCAGAAAGAATTGTAAGAAAGAGGAACTGGGAAGAAGCTGAACGATT  
CTGCCAAGCCCTTGAGCACACCTTTCTAGCTTACCCATGTGGATGAAATAAAGGAATTTCTCACTTT  
TTAACGGACCAGTTCAGTGGCCAGCATTGGCTGTGGATTGGTTTGAATAAAAGGAGCCAGATTTACAAG  
GATCCTGGCAATGGAGTGATCGTACACCAGTGTCTACTATTATCATGCCAAATGAGTTTCAGCAGGATTA  
TGACATCAGAGACTGTGCTGTCAAGGTATTTATAGGCCATGGCGAAGAGGCTGGCATTCTATGAT  
GATAGAGAATTTATTTTGGGCCTTTTGTGTGATACAAAACCTGAATGGGTGTGCCAAATCCAA  
AAGGCCGTAACAAAAACACCAGACTGGTACAATCCAGACCGTGTGGAATTCATGGACCTCCACTTAT  
AATTGAAGGAAGTGAATATTGGTTTGTGCTGATCTTACCTAACTATGAAGAAGCCGCTCTGTACTGT  
GCCAGCAATCACAGCTTTCTTGCAACTATAACATCTTTTGTGGGACTAAAAGCCATCAAAAAACAAATAG  
CAAATATATCTGGTGATGGACAGAAGTGGTGGATAAGAATTAGCGAGTGGCAATAGATGATCATTTTAC  
ATACTCACGATATCCATGGCACCCTTTCTGTGACATTTGGAGAGGAATGCTTGTACATGTCTGCCAAG  
ACTTGGCTTATCGACTTAGGTAACCAACAGACTGTAGTACCAAGTTGCCCTTCTCTGTGAAAAATATA  
ATGTTTCTTCTGTAGAGAAAACAGCCAGATTCTGCAGCTAAAGTGAATGTTCTGAGCAATGGATTCC  
TTTTCAGAATAAGTGTCTTAAAGATCAAACCGTGTCTCTCACATTTTCTCAAGCAAGCGATACCTGT  
CACTCCTATGGTGGCACCCTTCTTCAAGTGTGAGCCAGATTGAACAAGACTTTATTACATCCTTGTCTC  
CGGATATGGAAGTACTTTATGGATTGGTTTGCCTGGACTGCCTATGAAAAGATAAAACAAATGGACAGA  
TAACAGAGAGCTGACGTACAGTAACTTTTACCCATTATTGGTTAGTGGGAGGCTGAGAATACCAGAAAAT  
TTTTTTGAGGAAGAGTCTCGCTACCCTGTGCCCTAACTCAACCTCCAAAAATCACCGTTTACTGGGA  
CGTGGAAATTTTACATCCTGCAGTGAACGCCACTTTGTGTCTCTGTGAGAAAATTTTCAAGGTTAAAAG  
CAGACAGACGTTGCAGAAATGCTTCAAGAACTGTAAGTATCTAAATAATCTGTACAAAATAATCCCAAAG  
ACTCTGACTTGGCACAGTGTAAAAGGGAGTGTCTGAAAAGTAAACATGCAGCTGGTGGAGCATCACGGACC  
CTTACCAGCAGGCATTCTCAGTGTGCAGGCGCTCTTCAACACTCTTCTTATGGATCGGACTCTTCAG  
TCAAGATGATGAACTCAACTTTGGTTGGTTCAGATGGGAAACGTCTTCATTTTGTGCTGGGCTGAAACT  
AATGGGCAACTCGAAGACTGTGTAGTATTAGACTGATGGATTCTGAAAACAGTTGATTGCAATGACA  
ATCAACCAGGTGCTATTTGCTACTATTCAGGAAATGAGACTGAAAAGAGGTCAAACCAGTTGACAGTGT  
TAAATGTCCATCTCCTGTTCTAAATACTCCGTGGATACCATTTTCAAGAACTGTTGCTACAATTTTCAATA  
ACAAAGAATAGGCATATGGCAACAACACAGGATGAAGTTCATACTAAATGCCAGAAAATGAAATCCAAAAT  
CACATATTTCTGAGTATTCGAGATGAAAAGGAGAATAAATTTGTTCTTGGCAACTGCTGTACTTCAATTA  
TATGGCTTCATGGGTGATGTTAGGAATAACTTATAGAAAATAAGTCTTATGTGGTTTGTAAAGCCCCA  
CTGTATATACACATTGGAGAGCAGGAAGCAACTATAAAAAATGAGAAGTTTTTGGCTGGTTTAAAGTA  
CTGACGGCTTCTGGGATATTCAAACCTTAAAGTATTGAAGAAGCAGTTATTTTACCAGCACAGCAT  
TCTTGTGTAATAATGAAATGGTTGACTACAAGAAGAATAAATACTACACTGCCACAGTTTATGGCCA  
TATGAAGATGGTATTTACAGTGTATTTCAAAAAAAGGTAACATGGTATGAAGCATTAAACATGTGTTCTC  
AAAGTGGAGGTCACTTGGCAAGCCTTCAACAACAAAATGGCCAGCTCTTTCTGGAAGATATTGTAACCG  
TGATGGATTTCCACTATGGGTTGGGCTCTCAAGTCATGATGGAAGTGAATCAAGTTTTGAAATGGTCTGAT  
GGTAGTACATTTGACTATATCCCATGAAAAGGCCAAACATCTCCTGGAAATGTGTTCTCTTGGATCCAA  
AAGGAACTTGGAAACATGAAAATGCAACTCTGTTAAGGATGGTGTATTTGTTATAAACCTACAAAATC  
TAAAAAGCTGTCCGCTTACATATTCAAGATGTCCAGCAGCAAAAGAGAATGGGTACGGTGGATC  
CAGTACAAGGGTCACTGTTACAAGTCTGATCAGGCATTGCACAGTTTTTTCAGAGGCCAAAAAATTTGTT  
CAAAACATGATCACTCTGCAACTATCGTTTCCATAAAAGATGAAGATGAGAATAAATTTGTGAGCAGACT  
GATGAGGGAAAAATAATAACATTACCATGAGAGTTTGGCTTGGATTATCTCAACATTCTGTTGACCAGTCT  
TGGAGTTGGTTAGATGGATCAGAAGTGACATTTGTCAAATGGGAAAAATAAAGTAAAGTGGTGGTGGAA  
GATGTAGCATGTTGATAGCTTCAAATGAACTTGGAAAAAGTTGAATGTGAACATGGTTTTTGAAGAGT  
TGTCTGAAAAGTGCCTCTGGACTGTCTTATCTACTTGGATTGAGTTTCAAGACAGTTGTTACATTTTT  
CTCCAAGAAGCCATCAAAGTAGAAAGCATAGAGGATGTCAGAAATCAGTGTACTGACCATGGAGCGGACA

TGATAAGCATACATAATGAAGAAGAAAATGCTTTTATACTGGATACTTTGAAAAAGCAATGGAAAGGCC  
 AGATGATATCCTACTAGGCATGTTTTATGACACAGATGATGCGAGTTTCAAGTGGTTTGATAATCAAAT  
 ATGACATTTGATAAGTGGACAGACCAAGATGATGATGAGGATTTAGTTGACACCTGTGCTTTTCTGCACA  
 TCAAGACAGGTGAATGAAAAAAGGAAATTTGTGAAGTTTCTTCTGTGGAAGGAACACTATGCAAAACAGC  
 TATCCCATACAAAAGGAAATATTTATCAGATAACCACATTTTAAATATCAGCATTGGTGATTGCTAGCAGC  
 GTAATTTTGACAGTTTTGGGAGCAATCATTGGTTCCTGTACAAAAACATTCTGATTCTCGTTTACCA  
 CAGTTTTTCAACCGCACCCCAATCACCTTATAATGAAGACTGTGTTTTGGTAGTTGGAGAAGAAAATGA  
 ATATCCTGTTCAATTTGAC

ACGCGTACGCGGCCGCTCGAGCAGAACTCATCTCAGAAGAGGATCTGGCAGCAATGATATCCTGGATT  
 ACAAGGATGACGACGATAAGGTTTAA

**Protein Sequence:**

>RC231495 representing NM\_001198759  
 Red=Cloning site Green=Tags(s)

MRTGWATPRRPAGLLMLLFFDLAEPSSGRAANDPFTIVHGNTGKCIKPVYGVWIVADDCDEDEDLWVW  
 SQHRLFHLHSQKCLGLDITKSVNELRMFSCDSSAMLWVKCEHSLYGAARYRLALKDGHGTAISNASDVW  
 KKGSEESLQDQPYHEIYTRDGNVGRPCFPFLIDGTWHHDCILDEHSGPWCATTLNVEYDRKWIICL  
 KPENGCEDNWEKNEQFGSCYQFNTQTALSWKEAYVSCQNQGADLLSINSAAELTYLKEKEGIAKIFWIGL  
 NQLYSARGWEWDHKPLNFLNWDPRPSAPTIGGSSCARMDAESGLWQSFSCAQLPYVCRKPLNNTVEL  
 TDVWVTSYDTRCDAGWLPNNGFCYLLVNESNSWDKAHAKCKAFSSDLISIHSLADVEVVVTKLHNEDIKEE  
 VWIIGLKNINIPTLQWSDGTEVTLTYWDENEPNVPYKTPNCVSYLGELGQWKVQSCEEKLYVCKRKGE  
 KLNDASSDKMCPPEDEGWRHGETCYKIYEDEVFPGTNCNLTITSRFEQYLNLDLTKKYYDKSLRKYFWTGL  
 RDVDSCEYENWATVGGRRRAVTFSNWNFLPEASPGGCVAMSTGKSVGKWEVKDCRSFKALSIICKMMSGPL  
 GPPEASPKPDDPCPEGWQSFPAASLSCYKVFHAERIVRKRNWEEAERFCQALGAHLSSFSHVDEIKEFLHF  
 LTDQFSGQHWLWIGLNKRSPDLQGSWQWSDRTPVSTIIMPNEFQDQYDIRDCAAVKVFHRPWRGWHFYD  
 DREFIYLRPFACDTKLEWVCQIPKGRTPKTPDWYNPDRAIGHGPLIIEGSEYWFVADLHLNVEEAVLYC  
 ASNHSLFATITSFVGLKAIKNIANIISGDGQKWWIRISEWPIDDHFTYSRYPWHRFPVTFGEECLYMSAK  
 TWLIDLKPKTDCSTKLPFICEKYNVSSLEKYSYSDSAKVCSEQWIPFQNKCFKIKPVSLLTFSQASDTC  
 HSYGGTLPVLSQIEQDFITSLLPDMEATLWIGLRWTAYEKINKWTDNRELTYSNFHPLLVSGRRLRIPEN  
 FFEESRYHCALILNLQKSPFTGTWNFTSCSERHFVSLCQKYSEVKSQRQLQNASETVKYLNLYKIIPK  
 TLTWHSKRECLKSNMQLVSIITDPYQAFLSVQALLHNSLWIGLFSQDDELNFGWSDGKRLHFSRWAET  
 NGQLEDVVLDTDFGWKTVDCNDNQPAGIACYSGNETEKEVKPVDSVKCPSVLPVNTWPVIFQNCYNFII  
 TKNRHMATTQDEVHTKQKLNPKSHILSIRDEKENNFVLEQLLYFNMASWVMLGITYRNKSLMWFDKTP  
 LSYTHWRAGRPTIKNEKFLAGLSTDFWDIQTFKVIEEAVYFHQHSILACKIEMVDYKKEEYNTTLPQFMP  
 YEDGIYSVIQKVTWYALNMCSQSGHLASVHNQNGQLFLEDIVKRDGFPLWVGLSSHDSSESSFESWD  
 GSTFDYIPWKGQTSPGNCVLLDPKGTWKHEKCNVKGDAICYKPTKSKLSRLTYSRCPAAKENGSRWI  
 QYKGCYKSDQALHSFSEAKKLSKHDHSATIVSIKDEDEKFNVSRLMRENNNITMRVWGLSQHSVDQS  
 WSWLDGSEVTFVKWENKSKSGVGRCSMLIASNETWKKVECEHGFGRVCKVPLDCPSSTWIQFQDSCYIF  
 LQEAIKVESIEDVRNQCTDHGADMISIHNEENAFILDTLKQWKGPDDILLGMFYDQDASFKWFDNSN  
 MTFDKWTDQDDDELVDTC AFLHIKTGEWKGNCEVSSVEGLCKTAIPYKRKYLSDNHILISALVIAS  
 TILTVLGAIIWFLYKKSRSRFTTVFSTAPQSPYNEDCVLVVGEENEYPVQFD

TRTRPLEQKLISEEDLAANDILDYKDDDDKV

**Chromatograms:**

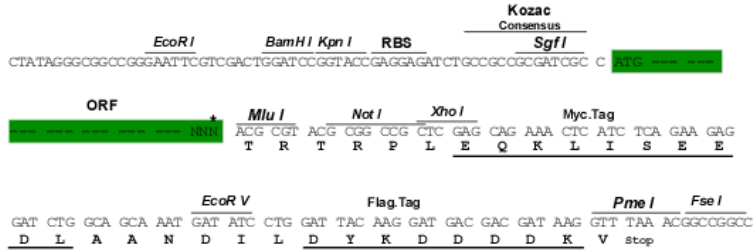
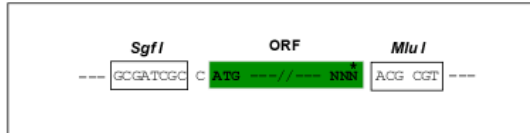
[https://cdn.origene.com/chromatograms/mk8117\\_c05.zip](https://cdn.origene.com/chromatograms/mk8117_c05.zip)

**Restriction Sites:**

Sgfl-MluI

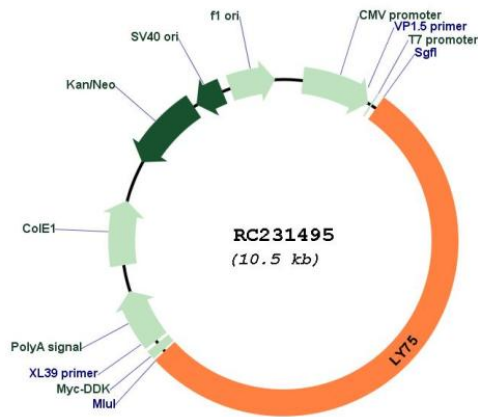
Cloning Scheme:

Cloning sites used for ORF Shutting:



\* The last codon before the Stop codon of the ORF

Plasmid Map:



ACCN: NM\_001198759  
 ORF Size: 5619 bp

<b>OTI Disclaimer:</b>	The molecular sequence of this clone aligns with the gene accession number as a point of reference only. However, individual transcript sequences of the same gene can differ through naturally occurring variations (e.g. polymorphisms), each with its own valid existence. This clone is substantially in agreement with the reference, but a complete review of all prevailing variants is recommended prior to use. <a href="#">More info</a>
<b>OTI Annotation:</b>	This clone was engineered to express the complete ORF with an expression tag. Expression varies depending on the nature of the gene.
<b>Components:</b>	The ORF clone is ion-exchange column purified and shipped in a 2D barcoded Matrix tube containing 10ug of transfection-ready, dried plasmid DNA (reconstitute with 100 ul of water).
<b>Reconstitution Method:</b>	<ol style="list-style-type: none"><li>1. Centrifuge at 5,000xg for 5min.</li><li>2. Carefully open the tube and add 100ul of sterile water to dissolve the DNA.</li><li>3. Close the tube and incubate for 10 minutes at room temperature.</li><li>4. Briefly vortex the tube and then do a quick spin (less than 5000xg) to concentrate the liquid at the bottom.</li><li>5. Store the suspended plasmid at -20°C. The DNA is stable for at least one year from date of shipping when stored at -20°C.</li></ol>
<b>RefSeq:</b>	<a href="#">NM_001198759.1</a> , <a href="#">NP_001185688.1</a>
<b>RefSeq ORF:</b>	5622 bp
<b>Locus ID:</b>	100526664
<b>UniProt ID:</b>	<a href="#">O60449</a>
<b>Cytogenetics:</b>	2q24.2
<b>MW:</b>	216.2 kDa
<b>Gene Summary:</b>	This locus represents naturally occurring read-through transcription between the neighboring lymphocyte antigen 75 (LY75) and CD302 molecule (CD302) genes. Alternative splicing results in multiple transcript variants encoding fusion products that share sequence identity with each individual gene product. [provided by RefSeq, Nov 2010]