

Product datasheet for **RC231483**

POGZ (NM_001194938) Human Tagged ORF Clone

Product data:

Product Type:	Expression Plasmids
Product Name:	POGZ (NM_001194938) Human Tagged ORF Clone
Tag:	Myc-DDK
Symbol:	POGZ
Synonyms:	MRD37; WHSUS; ZNF280E; ZNF635; ZNF635m
Vector:	pCMV6-Entry (PS100001)
E. coli Selection:	Kanamycin (25 ug/mL)
Cell Selection:	Neomycin
ORF Nucleotide Sequence:	>RC231483 representing NM_001194938 Red=Cloning site Blue=ORF Green=Tags(s)

TTTTGTAATACGACTCACTATAGGGCGCCGGAATTCGTCGACTGGATCCGGTACCGAGGAGATCTGCC
GCC**GCGATCGCC**

ATGGCGGACACCGACCTGTTTCATGGAATGTGAGGAGGAGGAGTTGGAGCCATGGCAGAAAATCAGTGATG
TCATTGAGGACTCTGTAGTTGAAGATTATAATTCAGTGGATAAACTACCACAGCTGGCAATCCTTTGGT
CCAGCAAGGTGGACAGCCACTCATCCTGACCCAGAATCCAGCCCCAGGTCTGGGCACAATGGTTACTCAA
CCAGTATTGAGGCTGTTCAAGTATGCAGAATGCCAATCATGTGACTAGTTCCTGTGGCCTCACAAC
CAATTTTATCACTACGCAGGGATTTCTGTAAGGAATGTCCGGCCTGTACAAAATGCAATGAATCAGGT
TGGGATTGTGCTGAACGTACAGCAAGGCCAAACGGTTAGACCAATTACACTAGTTCAGCCCCAGGTACC
CAGTTTGTAAAGCCGACAGTTGGAGTCCACAAGTGTTCCTCCAGATGACCCCTGTGAGGCCAGGCTCCA
CAATGCCTGTGAGGCCACCACCAACACCTTACCACCGTCATCCCGCCACTTTACCATTGAAAGCAC
CGTCCACAGTCCCAGTCCCAGCAGACCAAGTCCACTCCCAGCACTTCTACCCTCCACTGCCACACAG
CCAACCTCACTGGGGCACTAGCTGTTCAAGTCTCCAGGCCAGTCAAACCAGACCAGCAATCCCAAGCTAG
TGAGCATTGCCAGCTTTGTCAGTGTGAAGCGACCTGGTGTACAGGCCAGAAAATAGCAATGAAGTGCCAA
ATTGGTGAATACCCTTAACACCATCCCTCCCTGGGCCAGAGTCTGGGCCAGTGGTGGTGTCCAACAAC
AGCTCTGCTCATGGCTCTCAAAGAACCAGCGGACCTGAGTCTTCAATGAAAGTGACCTCTTCCATCCCAG
TATTTGACCTCCAGGATGGTGGACGAAAATATGTCCACGATGTAATGCTCAATTCGTGTTACTGAAGC
TTTGAGAGGTCACATGTGTTACTGTTGCCAGAAAATGGTTGAATACCAGAAGAAAGGAAAGTCCCTGGAT
TCAGAACCAGTGTCCATCAGCAGCAAAGCCCCATCCCTGAGAAAACAGTCTCTGTTGCTTCCACAC
CCTCTTACACCTATTCCTGCTCTGTACCAGCTACCAAAGTACCAGAACCAATGAGAACGTGGGCGA
TGCCGTCCAGACCAAACTCATTATGCTTGTAGATGACTTCTACTATGGACGGGATGGTGGCAAAGTAGCC
CAGCTCACAATTTCCCTAAGGTCGCCACATCTTCCGATGCCACATTGTACAAAAGGCTAAAAACA
ATATTCGATTCATGAACCATATGAAACACCACGTAGAATCGATCAGCAGAACGGTGAAGTAGATGGTCA
CACTATCTGCCAGCACTGTTACCGCAAGTTTTCCACTCCCTTCCAGCTTCAAGTGGCAACTGGAAAATGTT
CATAGTCCCTATGAATCTACTACCAAGTGAAGATCTGTGAATGGCGTTTGAAGTGAAGCCACTATTTTC



[View online »](#)

TCCAGCATATGAAGGATACTCATAAAGCCTGGAGAGATGCCTTATGTTTGCCAGGTGTGCAATATCGCTC
CTCACTCTACTCTGAGGTAGATGTCCATTTTCGGATGATCCATGAGGATACCCGGCATCTGCTCTGCCCT
TATTGCCTGAAGGTCTTCAAAAATGGCAATGCATTCCAACAGCATTACATGAGGCACCAGAAGAGAAATG
TTTATCACTGCAACAAATGCCGGCTGCAGTTTCTCTTTGCCAAGGACAAAATTGAACACAAGCTTCAACA
CCATAAAACCTTCCGTAACCCAAGCAGCTGGAGGGCTTGAAACCAGGCACCAAGGTGACAATCCGGGCT
TCCCGAGGGCAGCCACGAACTGTTCTGTATCCTCTAATGATACACCTCCAGCGCCTTGCAAGGAGCAG
CACCGCTGACCTCCTCAATGGACCCTCGCTGTCTTCCCTTTATCCCCCTGTCCAGCGCAGCATCCAGAA
GAGAGCTGTTAGGAAAATGAGTGTGATGGGCCGGCAGACATGCCTGGAGTGCAGCTTCGAGATCCCAGAC
TTCCCTAATCATTTCCTACTTACGTACACTGCTCTGTGTGCGTATAGCACCTGCTGTCTCGAGCTT
ATGCCAACCATGATCAACAATCATGTTCCACGGAAGAGCCCCAAGTATTTGGCTTTGTTAAAAATTC
TGTGAGTGAATCAAGCTGGCCTGCACTTCATGTACCTTTGTTACCTCTGTGGCGATGCTATGGCCAAG
CATTTGGTATTCAACCCCTCTCACAGATCCAGCAGCATCTGCCACGGGGACTCACTTGATAGCTCACT
CAAGGCATGGCCAGACTCGTGACCGAGTGCATGACCGGAACGTGAAGAATATGTACCCTCCTCCTCCTT
CCCCACTAACAAAGCTGCCACTGTGAAATCTGCGGGGGCCACCCAGCTGAGCCTGAAGAGCTACTAAT
CCCTTAGCCCCAGCACTCCATCACCAGCTCAACTGCAACCCACCACCAACCCCACTCACCCGAGG
CTTAGCCCTTCCACCGCTGGCTACAGAGGGAGCCGAATGTCTGAATGTTGATGATCAGGATGAAGGGAG
CCCAGTACCCAAAGAACCTGAGCTAGCATCAGGTGGTGGTGGTAGTGGTGGAGTTGGCAAAAAGGAGCAG
CTGTCTGTGAAGAAGCTTCGAGTAGTACTGTTTGTCTATGCTGCAATACAGAACAGGCAGCTGAACACT
TCCGAAATCCCCAGCGACGTATTCGCCGTTGGCTTCGACGTTTCCAGGCCTCCAGGGGGAGAATCTAGA
GGGCAATATCTGAGCTTTGAGGCAGAAGAAAATGGCTGAGTGGTGGTAAACCAGCGCGAACAACAG
CTACCTGTAATGAGGAGACCTTGTCCAGAAGGCCACCAAAATAGGACGTTCTTTGGAAGGGGGTTTA
AGATCTCCTATGAGTGGCTGTGCGTTTCATGCTGCGGCACCACCTGACTCCCCATGCCCGGCGAGCTGT
GGCCACACCCTACCTAAGGATGTAGCAGAGAATGCAGGACTCTTATTGATTTTGTACAACGGCAGATT
CACAACCAGGACTTACCCTTGTCTATGATTGTGGCTATTGATGAGATCTCTTTGTTCTGGATACAGAGG
TGCTGAGCAGTGATGATCGAAAGGAGAATGCCCTGCAGACAGTGGGCACAGGGGAACCTTGGTGTGATGT
AGTCTAGCCATTCTGGCAGATGGCACTGTCTTCCCACCCTGGTTTTCTACAGAGGGCAGATGGATCAG
CCTGCTAACATGCCAGACTCCATATTGCTAGAGGCAAAGGAGAGTGGCTACAGTGATGACGAGATCATGG
AGCTGTGGTCAACTCGAGTGTGGCAGAAGCACACAGCTTGCCAGCGCAGCAAAGGCATGCTTGTGATGGA
CTGTCATCGCACTCACTTGTGAGAAGAGGTAAGGCTATGCTTAGTGCCTTAGCACTTTGCCTGCAGTG
GTCCCAGCAGGCTGTAGCTCAAAAATTCAGCCATTAGATGTATGCATCAAAAGAAGTGTCAAGAAGTTC
TGCATAAAAAATGGAAGGAACAGGCTCGGGAATGGCAGATACTGCATGTGATTCTGATGCTCTGCTTCA
GCTGGTGTCTGTCTGGTGGGTGAAGTGTAGGTGTCATTGGGGACTGTCCAGAGCTAGTTCAGCGCTCC
TTCTGGTGGCTAGTGTCTGCCTGGCCCCGATGGCAACATTAACCTACCTACAAGAAATGCTGACATGC
AGGAGGAGCTAATTGCCTCCCTAGAGGAGCAACTGAAGCTGAGTGGGGAACATTCTGAGTCTTCCACTCC
ACGACCCAGATCATCTCCTGAAGAGACAATTGAGCCTGAAAGTCTTACCAGCTCTTTGAGGGTGAAGT
GAGACCGAGTCTTTCTATGGCTTTGAAGAAGCTGACCTAGATCTGATGGAGATT

ACGCGTACGCGGCCGCTCGAGCAGAACTCATCTCAGAAGAGGATCTGGCAGCAATGATATCCTGGATT
ACAAGGATGACGACGATAAGGTTTAA

Protein Sequence: >RC231483 representing NM_001194938
Red=Cloning site Green=Tags(s)

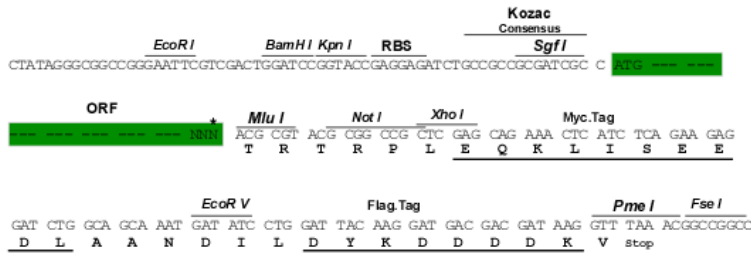
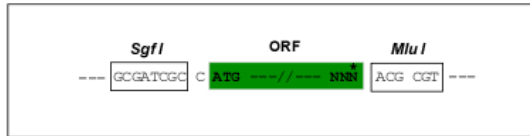
MADTDLFMECEEEELPQKISDVIEDSVVEDYNSVDKTTTAGNPLVQQGGQPLILTQNPAPGLGTMVTO
PVLRPVQVMQANHVTSSPVASQPIFITTQGFPVRNRPVQNAMNQVIGILNVQQGTVRPITLVPAPGT
QFVKPTVGVPQVFSQMPVVRPGSTMPVRPTTNTFTTIPATLTIKSTVPQSQSQTKSTPSTSTTPTATQ
PTSLGQLAVQSPGQSNQTTNPKLVSIASFVTVKRPVGTGENSNEVAKLVNLTNLTIPSLGQSPGPPVVSSNN
SSAHGSQRTSGPESSMKVTSSIPVFDLQDGGRIKCPRCNAQFRVTEALRGHMCYCCPEMVEYQKKGKSLD
SEPSVPSAAKPPSPEKTAPVASTPSSTIPALSPPTKVPENENVGDAVQTKLIMLVDDFFYYGRDGGKVA
QLTNFPKVATSFRCPHCTKRLKNNIRFMNHMKHVELDQQNGEVDGHTICQHCHYRQFSTPFQLQCHLENV
HSPYESTTKKICEWAFESEPLFLQHMKDTHKPGEMPYVCQVCQYRSSLYSEVDVHFMIHEDTRHLLCP
YCLKVFKNQAFQQHMYRHRQKRVYHCNKRLQFLFAKDKIEHKLQHHKTRKPKQLEGLKPGTKVTIRA
SRGQPRTPVSSNDTPPSALQEAAPLTSSMDPLPVFLYPPVQRSIQKRAVRKMSVMGRQTCLCFSFEIPD
FPNHFTYVHCSLCRYSTCCSRAYANHMNNHVPRKSPKYLALFKNSVSGIKLACTSCTFVTSVGDAMAK
HLVFNPSHRSSSILPRGLTWIAHSRHGQTRDRVHNRVKNMYPSPFPTNKAATVKSAGATPAEPEELLT
PLAPALPSPASTATPPPTPTHPQALALPPLATEGAELNVDDQDEGSPVQPELASEGGGGGGVGGKKEQ
LSVKKLRVLFALCCNTEQAAEHRNPQRRIRRWLRFQASQGENLEGKYL SFEAEKLAEWVL TQREQQ
LPVNEETLFQKATKIGRSLEGGFKISYEWAVRFMLRHHLTPHARRAVAHTLPKDV AENAGL FIDFVQRQI
HNQDLPLSMIVAIDEISLFLDTEVLSDDRKENALQTVGTGEPWCDVVLAILADGTVLPTLVFYRQMDQ
PANMPDSILLEAKESGYSDDEIMELWSTRVWQKHTACQRSKGMVMDCHRTHLSEEV LAML SASSTLPAV
VPAGCSSKIQPLDVCIKRTVKNFLHKKWKEQAREMADTACDSVLLQLVLVWLVGEVLGVIGDCPELVQRS
FLVASVLPGPDGNINSPTRNADMQEELIASLEEQLKLSGEHSESTPRPRSSPEETIEPESLHQLFEGES
ETESFYGFEEADLDLMEI

TRTRPLEQKLISEEDLAANDILDYKDDDDKV

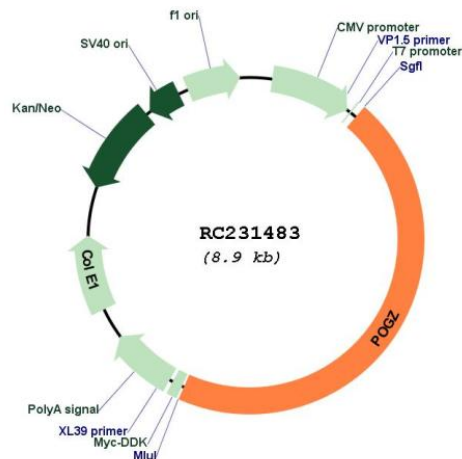
Restriction Sites:
Cloning Scheme:

Sgfi-MluI

Cloning sites used for ORF Shuttling:



* The last codon before the Stop codon of the ORF

Plasmid Map:


ACCN: NM_001194938

ORF Size: 4044 bp

OTI Disclaimer: The molecular sequence of this clone aligns with the gene accession number as a point of reference only. However, individual transcript sequences of the same gene can differ through naturally occurring variations (e.g. polymorphisms), each with its own valid existence. This clone is substantially in agreement with the reference, but a complete review of all prevailing variants is recommended prior to use. [More info](#)

OTI Annotation: This clone was engineered to express the complete ORF with an expression tag. Expression varies depending on the nature of the gene.

Components: The ORF clone is ion-exchange column purified and shipped in a 2D barcoded Matrix tube containing 10ug of transfection-ready, dried plasmid DNA (reconstitute with 100 ul of water).

Reconstitution Method:

1. Centrifuge at 5,000xg for 5min.
2. Carefully open the tube and add 100ul of sterile water to dissolve the DNA.
3. Close the tube and incubate for 10 minutes at room temperature.
4. Briefly vortex the tube and then do a quick spin (less than 5000xg) to concentrate the liquid at the bottom.
5. Store the suspended plasmid at -20°C. The DNA is stable for at least one year from date of shipping when stored at -20°C.

RefSeq: [NM_001194938.2](#)

RefSeq ORF: 4047 bp

Locus ID: 23126

UniProt ID: [Q7Z3K3](#)

Cytogenetics: 1q21.3

MW: 149.7 kDa

Gene Summary:

The protein encoded by this gene appears to be a zinc finger protein containing a transposase domain at the C-terminus. This protein was found to interact with the transcription factor SP1 in a yeast two-hybrid system. Alternatively spliced transcript variants encoding distinct isoforms have been observed. [provided by RefSeq, Aug 2010]