

Product datasheet for **RC231470**

MCM9 (NM_017696) Human Tagged ORF Clone

Product data:

Product Type:	Expression Plasmids
Product Name:	MCM9 (NM_017696) Human Tagged ORF Clone
Tag:	Myc-DDK
Symbol:	MCM9
Synonyms:	C6orf61; dj329L24.1; dj329L24.3; MCMDC1; ODG4
Vector:	pCMV6-Entry (PS100001)
E. coli Selection:	Kanamycin (25 ug/mL)
Cell Selection:	Neomycin
ORF Nucleotide Sequence:	>RC231470 representing NM_017696 Red=Cloning site Blue=ORF Green=Tags(s)

TTTTGTAATACGACTCACTATAGGGCGCCGGGAATTCGTCGACTGGATCCGGTACCGAGGAGATCTGCC
GCC**GCGATCGCC**

ATGAATAGCGATCAAGTTACACTGGTTGGTCAAGTGTGGTTCAGTCATATGTTTCGGAATACCATAAGAATG
ATATTCTTCTAATCTTGAAGGAAAGGGATGAAGATGCTCATTACCCAGTTGTGGTAAATGCCATGACTCT
GTTTGAGACCAACATGGAATCGGGGAATATTTCAACATGTTCCCCAGTGAAGTGCTTACAATTTTTGAT
AGTGCCTGCGAAGGTCAGCCTTGACAATTCTCCAGTCCCTTTCTCAGCCTGAGGCTGTTCCATGAAAC
AGAATCTTCATGCCAGGATATCAGGTTTGCCTGTCTGCTCCTGAGCTGGTGAGGGAACACATACCTAAAAC
CAAGGATGTGGGACACTTTTTATCTGCTACTGGGACAGTGATTGCAACAAGTCTGGTGAAGGTTCTGGAG
TTTGAGCGGGATTACATGTGTAACAAATGCAAGCATGTGTTTGTGATCAAGGCTGACTTTGAGCAGTATT
ACACCTTTGCCGGCCATCCTCGTGTCCAGCTTGGAGAGCTGTGATTCCCTAAATTCACTTGCCTCTC
AGGCTTGTCTTCGTCTCCAACCAGGTGTAGAGATTACCAGGAAATCAAAATTCAGGAACAGGTTCAAAGG
CTATCTGTTGGAAGTATCCACGATCTATGAAGTTATTCTGGAAGATGACTTAGTGGATAGTTGCAAAAT
CTGGTGTGACCTCACTATTTACGGGATTGTAATGCAACGGTGGAAAGCCCTTTTCAGCAAGATGTCCGCTG
TGAAGTGGAGATAGTCTGAAAGCAAATTACATCCAAGTAAATAATGAGCAGTCCCTCAGGGATCATCATG
GATGAGGAGGTCCAAAAGGAATTCGAAGATTTTTGGGAATACTATAAGAGCGATCCCTTTGCAGGAAGGA
ATGTAATATTGGCTAGCTTGTGCCCTCAAGTGTGGAAATGTATCTAGTAAAGCTTGCTGTGGCCATGGT
GCTGGCTGGTGGGATTCAAAGGACTGATGCTACAGGAACCGGGTCAGAGGAGAATCTCATCTTTTATTG
GTTGGGGATCCTGGCACAGGAAATCTCAGTTCCTCAAATATGCAGCAAAGATTACACCAAGATCTGTGC
TGACCACAGGAATTGGATCTACTAGTGCAGGTCTGACGGTAACTGCTGTAAGAACTCAGGAGAATGGAA
TTTGGAGGCTGGGCATTAGTTCTGCAGATGCGGGCCTTTGCTGTATTGATGAGTTCAATAGCCTCAA
GAGCATGATAGGACAGTATCCATGAAGCAATGGAGCAACAACCATAAGTGTGCTAAGGCTGGCCTCG
TGTGCAAGCTGAACACAAGGACCACCATCCTGGCAGCAACGAACCCCAAAGGCCAGTACGACCCCAAGGA
GTCCGTGTCTGTGAACATTGCCCTCGGCAGCCACTCTTAAGTCGATTTGACCTGATCCTGGTTTTGCTT
GATACCAAGAATGAAGACTGGGATCGTATCATTTCCTCTTTATCTTAGAAAATAAAGGTTACCAAGCA



AATCAGAGAAGCTCTGGAGCATGGAAAAGATGAAAACCTATTTCTGCCTCATAAGGAATCTGCAGCCCAC
 ACTGTCTGATGTGGGCAATCAGTTCTTCTCCGGTACTACCAGATGCAAAGGCAGAGTGATTGCCGGAAC
 GCTGCCCGGACCACCATTCGGCTGTTGGAAAGCTTGATACGATTAGCAGAAGCTCATGCTCGCCTGATGT
 TTCGTGATACTGTAACCTCGAAGACGCTATTACGGTGGTGTGATGATGGAGTCTCAATGCAGGGAGG
 TGCAGTCTAGGAGGTGAATGCCCTCCACACTTCCTTTCTGAAAACCTGGAGAGCAGTACCAGAGA
 CAGTGTGAACTTATTCTGAAAAGCTAGAGCTGCAGAGCCTCTTGAGTGAAGAGCTTAGAAGACTGAAA
 GGTTCAGAAATCAGAGTGTGCACCAATCCCAACCCAGGGTATTGGAGGTAGAGACTCCAGGATCCTT
 GAGAAATGGTCCAGGGGAAGAATCAAACCTCAGAACTTCATCACAGCAGGAAATCAACTATAGCACACAT
 ATCTTCTCTCCTGGAGGCAGCCCGAGGGAAGCCAGTCTAGATCCCCACCAGTCTGGAGCCTAATA
 GATCAACAAGTAGGAAACATTCAGCTCAGCACAAAAAATACAGAGATGACAGTTTATAGTTGGTTTGATT
 CATGGCAACTCATCAGAGTGAACCTAAAAACACTGTTGTTGTGTCTCCTCATCCCAAAACATCTGGAGAA
 AATATGGCTTCGAAGATCTTAACAGCACATCTCAGGGTAAGGAGAAGAGTGAGCCAGGCCAAAGGAGCA
 AAGTGGACATTGGGTTGCTTCCATCACCAGGAGAGACAGGTGTTCCATGGAGGGCAGACAATGTGGAAG
 TAACAAGAAAAAAGGCTAGCACTAGATTCTGAAGCAGCAGTCTCTGCTGATAAACCAGACTCAGTACTG
 ACTCATCATGTCCCAGGAACCTGCAGAAGCTGTGCAAAGAGAGGGCCCGAGAAGTTGTGCAGAAATAGCA
 CAGGGTGCCTGCACAGTGCACAGTCCCTTCCCATCCTCAGTCCACTCCTGTACATAGCCAGACAGAAT
 GCTGGACTCACCCAAAAGAAAGAGACCGAAATCCCTTGCAGCAAGTGAAGAGCCTGCAATTGAAAATGTT
 AAGCCTCCAGGTTCCCCTGTGGCCAAACTGGCAAAATTTACTTTCAAGCAGAAGTCAAAACTGATCCACT
 CCTTTGAAGATCACAGCCATGTGTACCTGGTGAACCTAAAAATAGCAGTTCATAGTCTAAAAATTTCCCA
 GCGTAGAACAAGAAGAGACGCAGCCTTGCCGGTGAAGCGTCCAGGAAAGTTAACATCTACCCAGGAAAC
 CAGATCTCCAGTCAGCCACAGGGTGAGACAAAGGAGGTGTCGACAGCCACCAGAGAAACACGGACCAA
 GAGAGAAGGTGATGTGTGCCCTGAGAAGAGGATTATTCAGCCTGAATTAGAGCTTGGGAACGAGACTGG
 GTGTGCTCATCTTACTTGTGAGGGAGACAAAAAGGAAGAGTTTTCAGGCAGTAATAAAAGCGGCAAGGTT
 CATGCCTGCACATTAGCCAGATTGGCAAACTTCTGCTTTACTCCCCATCGGAATCCAAATCAAAATCCC
 CTCTCTGAAAGGAAGAACCGAGGTGAGAGAGGCCAAGCTCCCCTCTACAACCACAGCTCCAATGCG
 TGTGAGTAAAAGGAAATCTTTTTCAGCTCCGTGGGTCCACCAGAAACTGATTGTTTCCAAAGAATCCCTC
 TTCCTTTACCAGAACTAGGTGATGAAGCATTTGATTGTGACTGGGATGAAGAGATGAGAAAAAAGTCA

ACGCGTACGCGGCCGCTCGAGCAGAAACTCATCTCAGAAGAGGATCTGGCAGCAATGATATCCTGGATT
 ACAAGGATGACGACGATAAGGTTTAA

Protein Sequence:

>RC231470 representing NM_017696
 Red=Cloning site Green=Tags(s)

MNSDQVTLVGQVFESYVSEYHKNDILLILKERDEDAHYPVVVNAMTLFETNMEIGEYFNMFPSEVLTI
 SALRRSALTILQSLSQPEAVSMKQNLHARISGLPVCPELVREHIPKTKDVGHFLSVTGTVIRTSLVKVLE
 FERDYMCNKCKHVFVIKADFEQYYTFCRPSSCPSLESCDSSKFTCLSGLSSSPTRCRDYQEIKIQEQVQR
 LSVGSIPRSMKVILEDDLVDSCSGDDLTIYGIVMQRWPKFQDVRCEVEIVLKANYIQVNNEQSSGIIM
 DEEVQKEFEDFWEYKSDPFAGRNVILASLCPQVFGMYLVKLAVAMVLAGGIQRDTATGTRVRGESHLL
 VGDPTGKSQLKYAAKITPRSVLTGIGSTASGLTVTAVKDSGEWNLEAGALVLADAGLCCIDEFNSLK
 EHDRTSIHEAMEQQTISVAKAGLVCKLNTRTILAAATNPKGQYDPPQESVSNIALGSPLLSRFDLILVLL
 DTKNEDWDRIISSFILENKGYPSKSEKLSMEKMKTYFCLIRNLQPTLSDVGNQVLLRYYQMQRQSDCRN
 AARTTIRLLESLIRLAEAHARLMFRDVTLEDAITVVSVMESSMQGGALLGGVNALHTSFPENPGEQYQR
 QCELILEKLELQSLLEELRRLERLQNSVHQSPRVLEVETTPGSLRNGPGEESNFRTSSQQEINYSTH
 IFSPGGSPEGSPVLDPPPHEPNRSTRKHSQAQHKNNRDDSDFWDFMATHQSEPKNVTVVSPHPKTSGE
 NMASKISNSTSQGKEKSEPGQRSKVDIGLLPSPGETGVPWRADNVESNKKRRLALDSEAAVSDADKPDVSL
 THHVPRNLQKLCERAQKLCRNSTRVPAQCTVPVSHQSTPVHSPDRMLDSPKRKRPKSLAQVEEPAIENV
 KPPGSPVAKLAKFTFKQKSKLHSHFEDHSHVSPGATKIAVHSPKISQRRTRRDAALPVKRPKGLTSTPGN
 QISSQPQGETKEVSQPPEKHGPREKVMCAPEKRIIQPELELGNETGCAHLTCEGDKKEEVSGSNKSGKV
 HACTLARLANFCFTPPSESKSKSPPERKNRGERGPPSPPTTAPMRVSKRKSFLRGSTEKLIVSKESL
 FTLPELGDEAFDCDWDEEMRKK

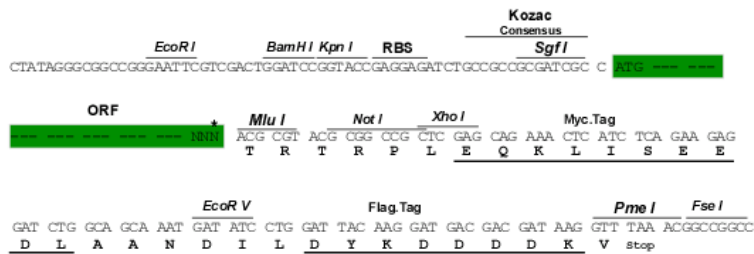
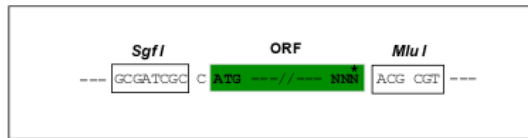
TRTRPLEQKLISEEDLAANDILDYKDDDDKV

Restriction Sites:

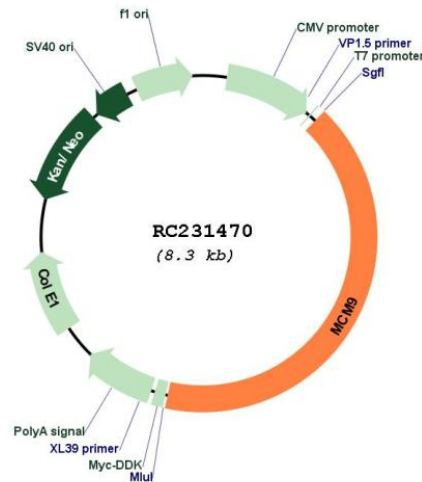
SgfI-MluI

Cloning Scheme:

Cloning sites used for ORF Shuttling:



* The last codon before the Stop codon of the ORF

Plasmid Map:


ACCN: NM_017696

ORF Size: 3429 bp

OTI Disclaimer: The molecular sequence of this clone aligns with the gene accession number as a point of reference only. However, individual transcript sequences of the same gene can differ through naturally occurring variations (e.g. polymorphisms), each with its own valid existence. This clone is substantially in agreement with the reference, but a complete review of all prevailing variants is recommended prior to use. [More info](#)

OTI Annotation: This clone was engineered to express the complete ORF with an expression tag. Expression varies depending on the nature of the gene.

Components: The ORF clone is ion-exchange column purified and shipped in a 2D barcoded Matrix tube containing 10ug of transfection-ready, dried plasmid DNA (reconstitute with 100 ul of water).

Reconstitution Method:

1. Centrifuge at 5,000xg for 5min.
2. Carefully open the tube and add 100ul of sterile water to dissolve the DNA.
3. Close the tube and incubate for 10 minutes at room temperature.
4. Briefly vortex the tube and then do a quick spin (less than 5000xg) to concentrate the liquid at the bottom.
5. Store the suspended plasmid at -20°C. The DNA is stable for at least one year from date of shipping when stored at -20°C.

RefSeq: [NM_017696.3](#)

RefSeq ORF: 3432 bp

Locus ID: 254394

UniProt ID: [Q9NXL9](#)

Cytogenetics: 6q22.31

MW: 127.8 kDa

Gene Summary:

The protein encoded by this gene is a member of the mini-chromosome maintenance (MCM) protein family that are essential for the initiation of eukaryotic genome replication. Binding of this protein to chromatin has been shown to be a pre-requisite for recruiting the MCM2-7 helicase to DNA replication origins. This protein also binds, and is a positive regulator of, the chromatin licensing and DNA replication factor 1, CDT1. [provided by RefSeq, Nov 2010]