

Product datasheet for **RC231457**

DCDC1 (NM_020869) Human Tagged ORF Clone

Product data:

Product Type:	Expression Plasmids
Product Name:	DCDC1 (NM_020869) Human Tagged ORF Clone
Tag:	Myc-DDK
Symbol:	DCDC1
Synonyms:	DCDC5
Mammalian Cell Selection:	Neomycin
Vector:	pCMV6-Entry (PS100001)
E. coli Selection:	Kanamycin (25 ug/mL)



[View online »](#)

ORF Nucleotide Sequence:

>RC231457 representing NM_020869
 Red=Cloning site Blue=ORF Green=Tags(s)

TTTTGTAATACGACTCACTATAGGGCGGCCGGAATTCGTCGACTGGATCCGGTACCGAGGAGATCTGCC
 GCC**CGGATCGCC**

ATGTGGCCTGTCCTTCCAGTGGCCAACCTAATGAGGAGTTTATTGGCCAATACAAGGACTGCTTGTTC
 CGAGCAGTCTCCATGAAGAAACCCATCTGTAAGACAACAGAGCCATATGCCCTGTGCGACTCAGAGT
 TTTGCAGAATGGAGAGAAGAATAAAAACAGATCCGTTACTATCCTTGGTCCAGATATCTCACCTGGACGG
 AAAACGCAGTGCAGTGGATTTTAAATTTACCTTCTGCAGCTCGGAGATTGTACAATGAAAAGGGGAAGG
 AAATATTTGCCTTAAAAGACCTGCAAAGAGATGAACTGGTGTATGTTTCATGTGGAGAAGTCTGGATCAA
 TCCTGACCTGTCCATTGCTCAGCAAAAAGAAACAAATATTCCTGAGGAACCTAGAATCAGACATTGCCAAA
 ATTCAAATCTTCTGCAGCACACATAAAAAGAGCTCTGTTTTAGAACTCAAAGTGACATTGTATCTG
 GAAGCAAGCTTGTGTGCATAAACCTGTAGCAATTTTTGGAGAAGAGAAGCAAGTTACAGAACCAGGAAGA
 AAAGCAATGCAAGAAGATCCTCTAACACGGAAAATGCTTCCAGTAAAATCTAGATTCACACGTAAGA
 GCTCATCTTGAATGAAGGCTTGTACACACTTCCAGGTATGCCTGGCAGGAAAACCTCACATGACTTTG
 ATGAGGATGACAGTCTTCAAAGAAAACGGAAAAGGGCTCTTTGAAAATGTGGAACACAGAAAGAAACA
 CAGCTGTTACCAAAGCATAGTAAATGCAACAAGCATTGTATCAGCAGTTTGAATACAGAGATGGGCGAG
 ATTATAAGCCATGCTGCTCCTCAGTAGTCTTGGGGTTCAAGTCCCAATCTCCGATCAGGCATGGAGG
 TGGTTTTGGTGGAGAAGAACTGATGGTAGTCATCAGCGCTGGATACACCAGGAAGACAGCAGGACCTT
 TCACCTTGAGTAACCTGACCTTGTGCTGGCAGTGTCTATGACCAAGACTAGAATGAAGTTTGTGGC
 TATCCAGTTATTGTTAGAAAATAAAGCCGTACAACAATGGAGCTGCCAATCAAAGTGGCATTACATGA
 AAAAATAAAAAGCACTTGTGGCTTTTATAGCACTGCTTGGATAAGGAAATACATCAGCAAAATTTGC
 TGGTGTCTGTACATCATCTGTGATTAAGAAGAAAACATTGATCAACCAGGATACTGTTATCTCTACCT
 GATGGAAGAGAAAAACTATGCTCTGCTTGGCTTGGACAATCCATGAGAACAGAGAAAGGACTGAAAC
 AATTGCTTCCAGGGGTTCCATTCTCTGTATTTACAGCACCAAGACTCAGAAGCCCTTCTTACAAGGGCC
 CTTCAAGGTATCAGTGTGGCTGAGGTTGATTTGTCGTGTGACAAGGCTGAAAAAATCTAAGTTACTAC
 CAAGCACGTCTATTGCTTTACGGATGAAGACCTGCACGCAAGCTGCATCTCACAGTGGCATGGCAGCCA
 CACACCAGAAGGCAGTAAAATAATTGCATACAAAAATGGGGATGGGTATCGTAATGGGAAGTTAATTGT
 GGCTGGAACATTTCCCATGCTTCTTACAGAATGCACGGAACAACCTGGGCTTCCAGAGCAGCCTCCAAA
 GTATATACCAAAGATGGAACCCCAATCTTTACCTTGCCTGATTTGGTTTTATGGGCTCTAGATGAATCCT
 TTCTCCAGAGAGACTCTGAGAAAACAAAAGCAAGATGCAGCTCCTGTTGAAAAGAACAGATAATTGTTGA
 AAAAAATCCAAGAATGAAAGTAAAAACAGATTATTTGCAAAATCTGTGACATCCGATAGTTGGATGGT
 ATAGACAAGTCTTTGCTTACCCTCATCCTCAGAAATCCTATTGCCATCTGGGTGTCTTGTGGTGAACCAT
 TTCTACCTCCAAATGCTTTGCAGAAAGCAGAAAAATTAGAGAAACAGAACTGGCTAAAAAAGGACAGAA
 TTTGGCTGATCTAGATACCATGAGACACAAAATGAGACAGTTAAAAGGGCGGCGAGTAGCGGCATGTCAG
 CCAGCCACCATGGTTCTACCAAGAGCCCTGTGCAGCCCGTGGTGGTTGAAGGAGGCTGGACCGAACAGA
 CTCAACAGGAAATTAACCTCATGGAACCTATAAGACATACAGAGGCACACCTTTCTGAAATCCAAGAAAT
 GGAATCCAAAATAAATTTTCCAATTGCAACCAACGATAGCAGTCAAGCCGAGCAACCTGTATAAGCAG
 CCCAACACAAAACGAGTGTGGATTTATCTAAATGGAGGCAGACCTGAAGATGGCACTTATGCCTGGGGCA
 AAATATTTAGAGCTGTGCAAGACTGCTCCTCTCGTCTCAAAATGACCCACCCAGCTAGAGCACTGTA
 CACCCAGTGGAGAGCCAATTCAGTCTGGGACGACATAGAGCGAGATATGGTCATCTGTGTGTATG
 GGACATGGTTTTAAAACCCAAAAGAGTTAAAACAACCTGATGGAGATCAGAGCAAAATATGCCAGAAATCC
 GAAGGCAGCAGGGCCCTCAAGCCACAGACATTGTGGTGTACCATCCACGAAAGCTGTGTCTCTGGCACA
 TCTCCACAAT

ACGGTACGGCGCGCTCGAGCAGAAACTCATCTCAGAAGAGGATCTGGCAGCAATGATATCTGGATT
 ACAAGGATGACGACGATAAGGTTTAA

Protein Sequence: >RC231457 representing NM_020869
 Red=Cloning site Green=Tags(s)

MWPVLPSPGQLNEEFDWPIQGLLVPSSPPMKKICKTTEPYAPVRLRVLQNGEKNKNRSVITLGPDISPGR
 KTQCTEILNLPASAARRLYNEKGKEIFALKDLQRDELVYVSCGELWINPDLSTIAQQKKQIFLRNLESDIAK
 IQIFCSTHKIEALVLEVQSDIVSGSKLAVHKPVAIFGEEKQVTEPEEKQMVEDPLTTENASSEILDShVR
 AHLRMKACHTLPRYAWQETSHDFDEDDSLPKKTEKGLFENVPEQKKHSCSPKHSLKHKCHQQFEYRDGQ
 IISHAAPQLVLGVQGNLRSMEVVLVEKKSDBGSHQRWIHQEDSRTFHLVSNPDLVLAVSMTKTRNEVCG
 YPVIVQKYKPYNNGAANQKWHYMKNIKALVAFHSTALDKEITSANYAGVCTSSVIKEENIDQPGYCYLSP
 DGKRKTMCLACGQSMRTEKGLKQLLPVFPFLCISGKTQKPFQGPFKVISVAEVDLSCDKAEKLSYY
 QARLLSLRMTCTQAASHSGMAATHQKAVKIIAYKNGDGYRNGKLI VAGTFPMLLTECTEQLGLARAASK
 VYTKDGTPIFTLRDLVLWALDESFLQRDSEKQKQDAAPVGKEQIIVEKNPRMKVKNRLF AKSVTSDSLDG
 IDKSLTILRNPIAIWVSCGEPFLPPNALQKAEKLEKQNLKKDRILADLDMRHKMRQLKGRVAAACQ
 PATMVPTKSPVQPVVVEGGWTEQTQOEIKLMELIRHTEAHLSEIQEMESKINFPIATKRIAVKPSNLYKQ
 PNTRKRWIYLNNGRPEDGTYAWGKTISELLQDCSSRLKMTHPARALYTPSGEPIQSWDDIERDMVICVSM
 GHGFKTPKELKQLMEIRANYARIRRRQQGPQATDIVVSPSTKLLSLAHLHN

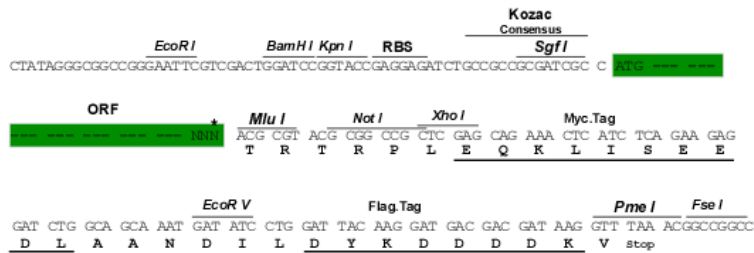
TRTRPLEQKLISEEDLAANDILDYKDDDDKV

Chromatograms: https://cdn.origene.com/chromatograms/mk8106_h09.zip

Restriction Sites: SgfI-MluI

Cloning Scheme:

Cloning sites used for ORF Shuttling:

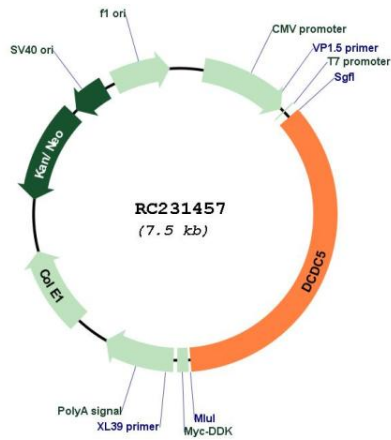


* The last codon before the Stop codon of the ORF

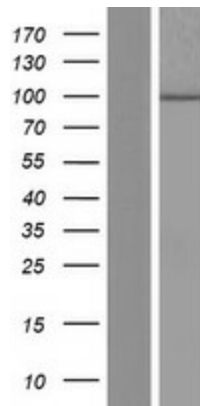
ACCN: NM_020869

ORF Size:	2670 bp
OTI Disclaimer:	The molecular sequence of this clone aligns with the gene accession number as a point of reference only. However, individual transcript sequences of the same gene can differ through naturally occurring variations (e.g. polymorphisms), each with its own valid existence. This clone is substantially in agreement with the reference, but a complete review of all prevailing variants is recommended prior to use. More info
OTI Annotation:	This clone was engineered to express the complete ORF with an expression tag. Expression varies depending on the nature of the gene.
Components:	The ORF clone is ion-exchange column purified and shipped in a 2D barcoded Matrix tube containing 10ug of transfection-ready, dried plasmid DNA (reconstitute with 100 ul of water).
Reconstitution Method:	<ol style="list-style-type: none">1. Centrifuge at 5,000xg for 5min.2. Carefully open the tube and add 100ul of sterile water to dissolve the DNA.3. Close the tube and incubate for 10 minutes at room temperature.4. Briefly vortex the tube and then do a quick spin (less than 5000xg) to concentrate the liquid at the bottom.5. Store the suspended plasmid at -20°C. The DNA is stable for at least one year from date of shipping when stored at -20°C.
RefSeq:	NM_020869.3 , NP_065920.2
RefSeq Size:	4773 bp
RefSeq ORF:	2673 bp
Locus ID:	341019
Cytogenetics:	11p13
MW:	100.3 kDa
Gene Summary:	This gene encodes a member of the doublecortin family. The protein encoded by this gene is a hydrophilic, intracellular protein. It contains a single doublecortin domain and is unable to bind microtubules and to regulate microtubule polymerization. This gene is mainly expressed in adult testis. It does not have a mouse homolog. [provided by RefSeq, Sep 2010]

Product images:



Circular map for RC231457



Western blot validation of overexpression lysate (Cat# [LY434455]) using anti-DDK antibody (Cat# [TA50011-100]). Left: Cell lysates from untransfected HEK293T cells; Right: Cell lysates from HEK293T cells transfected with RC231457 using transfection reagent MegaTran 2.0 (Cat# [TT210002]).