

Product datasheet for **RC231430**

OXR1 (NM_001198533) Human Tagged ORF Clone

Product data:

Product Type:	Expression Plasmids
Product Name:	OXR1 (NM_001198533) Human Tagged ORF Clone
Tag:	Myc-DDK
Symbol:	OXR1
Synonyms:	CHEGDD; Nbla00307; TLDC3
Mammalian Cell Selection:	Neomycin
Vector:	pCMV6-Entry (PS100001)
E. coli Selection:	Kanamycin (25 ug/mL)



[View online »](#)

ORF Nucleotide
Sequence:

>RC231430 representing NM_001198533
Red=Cloning site Blue=ORF Green=Tags(s)

TTTTGTAATACGACTCACTATAGGGCGGCCGGGAATTCGTCGACTGGATCCGGTACCGAGGAGATCTGCC
GCC**CGGATCGCC**

ATGTCTGTGTCTAATCTATCATGGCTGAAGAAAAAGTCCCAGTCCGGTGGATATTAATGCTCCAGGGTTCA
ACCCTTTGGCTGGTGCAGGAAAGCAAACACCACAAGCCAGTAAGCCCCGGCACCCAAGACCCCATCAT
TGAAAGAAGAGCAGAACAAATGCAGCAAATACTCAGAAACATCCTTCCAGAAGGAGCGAACTGAAGAGGTTT
TACACAATTGACACTGGCCAAAAGAAGACCCTAGACAAGAAAGATGGAAGACGAATGCTTTTCAGAAAC
CTAAAGGGACTATTGAGTACTGTTGAATCAAGGGATTCTTTGAATAGCATAGCCCTGAAGTTTGATAC
AACACCTAACGAACTTGTCAATTAATAAGTTATTCTCCCGAGCAGTTGTTACTGGACAGGTTCTGTAT
GTTCTGTATCCTGAATATGTCTCCAGTGTGAGAGCTCTCCATCTCTAAGCCCCGTAAGTCTCTGTAC
CAACATCATCTGAGGCTGAATTTGATAAGACCACTAATCTGATGCCATCCAACAGAAGCAACTCCCTC
ATCTACTTTCACGGTATTCGACCTGCAGAGTTGTATCTCAACTTCTGAGGAGGAGGAAGCATTACT
GAGAAATTTCTTAAAATTAATTGCAAATATATTACCAGTGGCAAGGGCACAGTCAGTGGTGTCTGTCTAG
TTACACCAATAATATAATGTTTGATCCACATAAAAAATGACCCTTTGGTTCAAGAGAATGGCTGTGAGGA
ATATGGCATCATGTGTCCAATGGAAGAGGTGATGTGAGCTGCAATGTACAAAAGAAATTTGGATAGCAAA
ATAAAGGAATCTTTACCCATAGATATAGATCAGCTATCAGGAAGGGACTTCTGCCATTCAAAGAAAATGA
CAGGAAGTAACACTGAGGAAATAGACTCAAGAAATCCGAGATGCAGGTAATGATAGTGCCAGCACTGCTCC
TAGGAGCACTGAGGAGTCTTTTCTGAAGATGTGTTTACAGAATCAGAATTTCCCTATACGAGAGGAG
CTTGATCTTTCAGATGAAGTGCAGCAAGATAAACTTCTGGTGCCTCATCAGAATCTGTGCAAACTGTCA
ATCAGGCTGAAGTAGAAAGTCTGACAGTCAAATCAGAATCTACTGGTACTCCTGGTCACTTAAGATCTGA
TACTGAACATTCTACAAATGAAGTTGGGACTTTATGTCATAAAAAGTATTAAATAATCTTGAAATGGCC
ATTAAGGAAGATCAGATTGCAGATAACTTTCAAGGAATATCAGGTCCATAAGAAAGACAGCACAAGTATAA
AAGGTAATTCAGACCAGGATTCTTTTCTCATGAGAATTCGTTACACCAAGAAGAGAGTCAAAAAGAAAA
TATGCCTTGTGGGAAACAGCAGAAATTTAAACAAAAGCAAAGTGTAAACAAAGGAAAAACAAGGAAAGGAG
CAAAATCAGGACTCACAGACAGAGGCAGAAAGAGCTACGCAAACTTTGGAAAACCCATACTATGCAACAAA
CTAAACAGCAAAGGAAAATATCAACAAGTGTCAAAAAAGAAGCTAAGCATAAAATTACATCTGCTGA
TGGACACATAGAAAGTTCTGCATTTTAAAAGAAAAGCAAAGGCATCGATTACATAAGTTCTTGTGTCTC
AGAGTTGAAAACCAATGAGGAAAACGTTTGTATCTCAAGCAAGTCTCAATGCAACAGTATGCACAGA
GAGATAAGAAACATGAATATTGGTTTGCTGTGCCACAAGAAAGGACAGATCACTTGTATGCCTTCTTCAT
TCAGTGGAGTCCAGAAATATATGCAGAAGATACTGGCGAATATACCAGAGAACCTGGATTATAGTAGTA
AAAAAGATTGAGGAGTCTGAAACAATTGAGGATTCTAGTAATCAAGCAGCAGCCAGAGAATGGGAGGTAG
TGTCAAGTGGTGAATATCACCAGGATCGATGCTCTAAATACTGAAGAACTGCGCACACTCTGCAGACG
CCTCCAGATTACTACAAGGGAAGACATAAATTCAAAGCAGGTTGCTACAGTGAAGCAGACCTGGAGTCT
GAATCTTTTCGACCAAACCTAAGTATCCAGTGAAGTTTACTGCCAGATCAAATGAAAAGCTTACCA
AGCATCTTCCACCAAGAACAATTGGCTATCCATGGACTCTTGTATGGTACTGGAAAACATGGCACAAG
CTTGAAAACCTTTATCGAACAATGACAGGTTTAGACACCCAGTGTGATGGTGATTAAGACAGTGTG
GGACAGGTTTTTGGTGCCTTAGCATCTGAGCCACTGAAAAGTGAAGTGAAGTGGCTTTTATGGTACTGGAGAGA
CCTTTGTTTTTACATTCTGTCCGGAGTTTGGGCTTTAAGTGGACAGGAGATAATGTTTTTTATCAA
AGGAGACATGGATTCACTAGCTTTCCGGTGGTGGAGGAGGAGAAATTTGCGCTTTGGCTTGTGAGATCTC
TACCATGGAAGAAGCCATTCTTGTAAAACGTTTGGGAATCGTACACTTTCTAAGAAGGAAGATTTCTTTA
TCCAAGATATTGAAATCTGGGCTTTTGAA

ACGCGTACGCGGCCGCTCGAGCAGAAACTCATCTCAGAAGAGGATCTGGCAGCAAATGATATCTGGATT
ACAAGGATGACGACGATAAGGTTTAA

Protein Sequence: >RC231430 representing NM_001198533
 Red=Cloning site Green=Tags(s)

```

MSVSNLSWLKKKSQSVGINAPGFNPLAGAGKQTPQASKPPAPKTPIIIEEQNNAANTQKHPSRRSELKRF
YTIDTGQKKTLDKKGRRMSFQPKGTIEYTVESRDSLNSIALKFDTPNELVQLNKLFSRAVVTGQVLY
VPDPEYVSSVESPSPSPVSPSPTSSEAEFDKTTNPDVHPTEATPSSTFTGIRPARVVSSTSEEEAFT
EKFLKINCKYITSGKGTVSGVLLVTPNNIMFDPHKNDPLVQENGCEEYGMCPMEEVMSAAMYKEILD SK
IKESLPIDIDLQSGRDFCHSKKMTGSNTEEIDSRIRDAGNDSASTAPRSTEE SLSEDFVTESELSPIREE
LVSSDEL RQDKSSGASSESVQTVNQAEV ESLTVKSESTGTPGHLRSDTEHSTNEVGT LCHKTDLNNLEMA
IKEDQIADNFQGISGPKEDSTS IKGNSDQDSFLHENS LHQEE SQKENMPCGETAEFKQKQSVNKGKQKGE
QNQDSQTEAEELRKLWKHTMQQTKQQRENIQQVSQKEAKHKITSADGHI ESSALLKEKQRHLHKFLCL
RVGKPMRKT FVSQASATMQQYAQRDKKHEYWF AVPQERTDHL YAFFIQWSPEIYAEDTGEYTRPGFIVV
KKIEESETIEDSSNQAAAREWEVSVVAEYHRRIDALNTEELRTL CRRLQITTTREDINSKQVATVKADLES
ESFRPNLSDPSELLLPDQIEKLTKHLPPRTIGYPWTLVYGTGKHGTS LKTL YRTMTGLDTPVLMVIKDS D
GQVFGALASEPLKVSDGFYGTGETFVFVTF CPEFEVFKWTDGNMFFIKGDMDSLAFGGGGGEFALWLDGDL
YHGRSHSCKTFGNRTLSKKEDFFIQDIEIWAFA
  
```

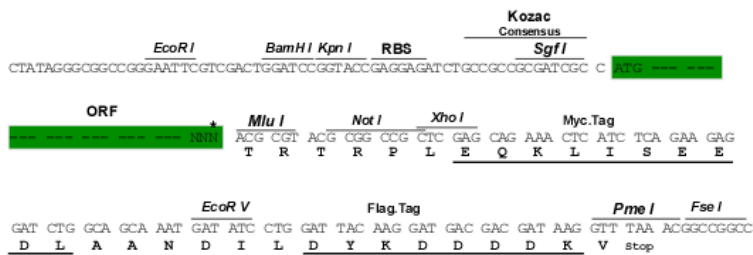
TRTRPLEQKLISEEDLAANDILDYKDDDDKV

Chromatograms: https://cdn.origene.com/chromatograms/ja3703_h07.zip

Restriction Sites: SgfI-MluI

Cloning Scheme:

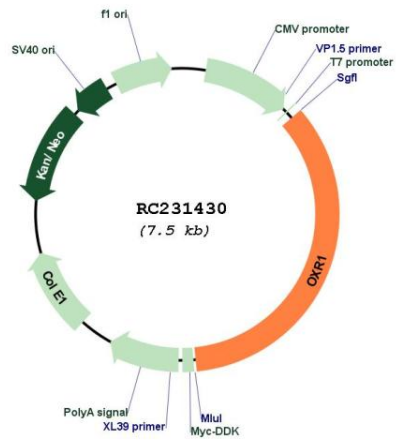
Cloning sites used for ORF Shuttling:



* The last codon before the Stop codon of the ORF

ACCN:	NM_001198533
ORF Size:	2619 bp
OTI Disclaimer:	The molecular sequence of this clone aligns with the gene accession number as a point of reference only. However, individual transcript sequences of the same gene can differ through naturally occurring variations (e.g. polymorphisms), each with its own valid existence. This clone is substantially in agreement with the reference, but a complete review of all prevailing variants is recommended prior to use. More info
OTI Annotation:	This clone was engineered to express the complete ORF with an expression tag. Expression varies depending on the nature of the gene.
Components:	The ORF clone is ion-exchange column purified and shipped in a 2D barcoded Matrix tube containing 10ug of transfection-ready, dried plasmid DNA (reconstitute with 100 ul of water).
Reconstitution Method:	<ol style="list-style-type: none">1. Centrifuge at 5,000xg for 5min.2. Carefully open the tube and add 100ul of sterile water to dissolve the DNA.3. Close the tube and incubate for 10 minutes at room temperature.4. Briefly vortex the tube and then do a quick spin (less than 5000xg) to concentrate the liquid at the bottom.5. Store the suspended plasmid at -20°C. The DNA is stable for at least one year from date of shipping when stored at -20°C.
RefSeq:	NM_001198533.1 , NP_001185462.1
RefSeq Size:	4716 bp
RefSeq ORF:	2622 bp
Locus ID:	55074
UniProt ID:	Q8N573
Cytogenetics:	8q23.1
MW:	97.9 kDa
Gene Summary:	May be involved in protection from oxidative damage.[UniProtKB/Swiss-Prot Function]

Product images:



Circular map for RC231430