

Product datasheet for **RC231407**

COG4 (NM_001195139) Human Tagged ORF Clone

Product data:

Product Type:	Expression Plasmids
Product Name:	COG4 (NM_001195139) Human Tagged ORF Clone
Tag:	Myc-DDK
Symbol:	COG4
Synonyms:	CDG2J; COD1; SWILS
Mammalian Cell Selection:	Neomycin
Vector:	pCMV6-Entry (PS100001)
E. coli Selection:	Kanamycin (25 ug/mL)



[View online »](#)

ORF Nucleotide
Sequence:

>RC231407 representing NM_001195139
Red=Cloning site Blue=ORF Green=Tags(s)

TTTTGTAATACGACTCACTATAGGGCGGCCGGAATTCGTCGACTGGATCCGGTACCGAGGAGATCTGCC
GCC**CGCATCGCC**

ATGGGGACCAAGATGGCGGACCTTGATTGCGCTCCGAAGCTGTACAGGGTGCAGCAGCCGCTGAGGGG
TGGGAGGTGGCCGCTGCTCCGAAATCTCCGCTGAGCTCATTGCTCCCTGACAGAGCTGCAGGAGCTGGA
GGCTGTATACGAACGGCTCTGCGCGAGGAGAAAGTGGTGGAGAGAGAGCTGGATGCTCTTTTGGAAACAG
CAAAACACCATTGAAAGTAAAGTGGTCACTCTCCACCGAATGGGTCTAATCTGCAGCTGATTGAGGGAG
ATGCAAAGCAGCTGGCTGGAATGATCACCTTTACCTGCAACCTGGCTGAGAATGTGTCCAGCAAAGTTCCG
TCAGCTTGACCTGGCCAAGAACCCTCTATCAGGCCATTCAGAGAGCTGATGACATCTTGACCTGAAG
TTCTGCATGGATGGAGTTCAGACTGCTTTGAGGAGTGAAGATTATGAGCAGGCTGCAGCACATACTCATC
GCTACTTGTGCCTGGACAAGTCGGTCATTGAGCTCAGCCGACAGGGCAAAGAGGGGAGCATGATTGATGC
CAACCTGAAATTGCTGCAGGAAGCTGAGCAACGTCTCAAAGCCATTGTGGCAGAGAAGTTTGCCATTGCC
ACCAAGGAAGGTGATCTGCCCCAGGTGGAGCGCTTCTTCAAGATCTTCCACTGCTGGGTTTGCATGAGG
AGGGATTAAGAAAGTTCTCGGAGTACCTTTGCAAGCAGGTGGCCAGTAAAGCTGAGGAGAATCTGCTCAT
GGTGTGGGGACAGACATGAGTGATCGGAGAGCTGCAGTCATCTTTGAGATACACTTACTCTTCTGTTT
GAAGGGATTGCCCGCATTGTGGAGACCCACCAGCCAATAGTGGAGACCTATTATGGGCCAGGGAGACTCT
ATACCCTGATCAAATATCTGCAGGTGGAATGTGACAGACAGGTGGAGAAGTGGTAGACAAGTTCATCAA
GCAAAGGGACTACCACAGCAGTTCGGCATGTTCAGAACAACCTGATGAGAAATCTACAACAGAAAAA
ATCGAACCAAGAGAAGTGGACCCATCTGACTGAGGTCAACCTGATGAATGCCCGCAGTGAATACTA
TACGCTTCTCAAGAAGAGGATTAGCTCTGATTTTGGAGTGGGAGACTCCATGGCCTCAGAGGAATAA
GCAAGAGCACCAAGTGTCTGGACAACTCCTCAATAACTGCCTTTTGGAGCTGTACCATGCAGGAGCTA
ATTGGCTTATATGTTACCATGGAGGAGTACTTCATGAGGGAGACTGTCAATAAGGCTGTGGCTCTGGACA
CCTATGAGAAGGGCCAGCTGACATCCAGCATGGTGGATGATGTCTTCTACATTGTTAAGAAGTGCATTGG
GCGGGCTCTGTCCAGCTCCAGCATTGACTGTCTCTGTGCCATGATCAACCTCGCCACCACAGAGCTGGAG
TCTGACTTCAGGGATGTTCTGTGTAATAAGCTGCGGATGGGCTTCTGCCACCACCTTCCAGGACATCC
AGCGCGGGGTGACAAGTGCCGTGAACATCATGCACAGCAGCTCCAGCAAGGCAAATTTGACACAAAAGG
CATCGAGAGTACTGACGAGGCGAAGATGTCCTTCTGAGTGACTGCACCAAGCTCTTCCAGCCAGGGCATT
GGAGGGGAGCAGGCCAGGCAAGTTTGCAGCTGCCTTCTGACTTGGCCGCCGTGTCCAACAAATTCC
GAGACCTTTGCAGGAAGGGCTGACGGAGCTCAACAGCACAGCCATCAAGCCACAGGTGCAGCCTTGGAT
CAACAGCTTTTTCTCCGCTCTCCCAACATCGAGGAGGAAGAATTCAATGACTATGAGGCCAACGACCTT
TGGGTACAACAGTTTATCCTTAACCTGGAGCAGCAAATGGCAGAGTTCAAGGCCAGCCTGTCCCCGGTCA
TCTACGACAGCCTAACCGCCTCATGACTAGCCTTGTGCGCTCGAGTTGGAGAAAGTGGTGTGAAATC
CACCTTTAACCGGCTGGGTGGTCTGCAGTTTGACAAGGAGCTGAGGTGCTCATTGCCTACCTTACCACG
GTGACCACCTGGACCATCCGAGACAAGTTTGGCCGGCTCTCCAGATGGCCACCATCCTCAATCTGGAGC
GGGTGACCGAGATCCTCGATTACTGGGGACCAATTCCGGCCATTGACGTGGCGCCTCACCCCTGCTGA
AGTGCAGGAGTGTGGCCCTGCGGATAGACTTCCGCAGTGAAGATATCAAGAGGCTGCGCCTG

ACGCGTACGCGGCCGCTCGAGCAGAACTCATCTCAGAAGAGGATCTGGCAGCAAATGATATCCTGGATT
ACAAGGATGACGACGATAAGGTTTAA

Protein Sequence: >RC231407 representing NM_001195139
Red=Cloning site Green=Tags(s)

```

MGTKMADLDSPPKLSGVQQPSEGVGGGRCSEISAELIRSLTELQELEAVYERLCGEEKVVERELDALLEQ
QNTIESKMVTLHRMGPNLQLIEGDAKQLAGMITFTCNLAENVSSKVRQLDLAKNRLYQAIQRADDILDK
FCMDGVQTLRSEDYEQAAAHTHRYLCLDKSVIELSRQKKEGSMIDANLKLQEAERLKAIVAEKFAIA
TKEGDLPQVERFFKIFPLLGLHEEGLRKFSEYLCKQVASKAEENLLMVLGTDMSDRRAAVIFADTLTLF
EGIARIVETHQPIVETYYPGRLYTLIKYLQVECDRQVEKVVDFIKQRDYHQFRHVQNNLMRNSTTEK
IEPRELDPILTEVTLMNARSEL YL RFLKKRISDFEVDGSMASEEVKQEHQKCLDKLLNCLL SCTMQEL
IGLYVTMEEYFMRETVNKAVALD TYEKQLTSSMVDDVFYIVKKCIGRALSSSIDCLC AMINLATTELE
SDFRDVLCNKLRMGFPATTFQDIQRGVTSAVNIMHSSLQQGFDTKGIESTDEAKMSFLSDCTKLF SQGI
GGEQAQAKFDSCLSDLA AVSNKFRDLLQEGL TELNSTAIKPVQVPWINSFFSVSHNIEEEEFNDYEANDP
WVQQFILNLEQQMAEFKASLSPVIYDSL TGLMTSLVAVELEKVV LKSTFNRLGGLQFDKELRSLIAYLTT
VTTWTIRDK FARLSQMATILNLERVTEILDYWGPN SGPLTWRLTPAEVRQVLALRIDFRSEDIKRLRL
    
```

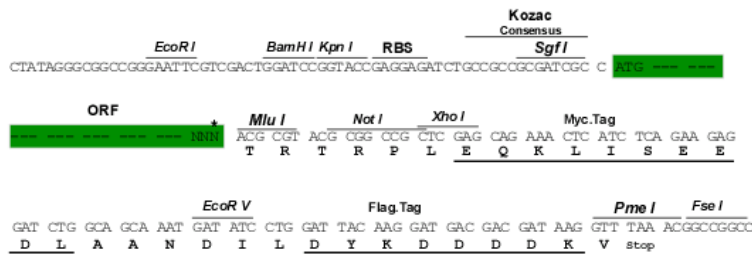
TRTRPLEQKLISEEDLANDILDYKDDDDKV

Chromatograms: https://cdn.origene.com/chromatograms/mk8106_g08.zip

Restriction Sites: SgfI-MluI

Cloning Scheme:

Cloning sites used for ORF Shuttling:



* The last codon before the Stop codon of the ORF

ACCN: NM_001195139

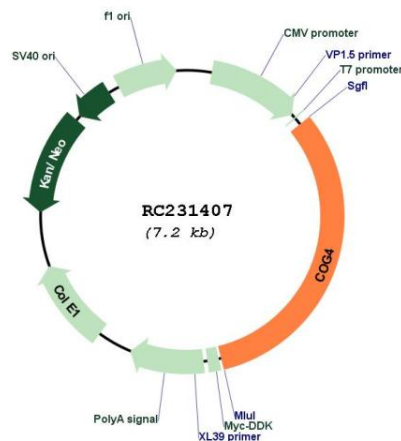
ORF Size: 2304 bp

OTI Disclaimer: The molecular sequence of this clone aligns with the gene accession number as a point of reference only. However, individual transcript sequences of the same gene can differ through naturally occurring variations (e.g. polymorphisms), each with its own valid existence. This clone is substantially in agreement with the reference, but a complete review of all prevailing variants is recommended prior to use. [More info](#)

OTI Annotation: This clone was engineered to express the complete ORF with an expression tag. Expression varies depending on the nature of the gene.

- Components:** The ORF clone is ion-exchange column purified and shipped in a 2D barcoded Matrix tube containing 10ug of transfection-ready, dried plasmid DNA (reconstitute with 100 ul of water).
- Reconstitution Method:**
1. Centrifuge at 5,000xg for 5min.
 2. Carefully open the tube and add 100ul of sterile water to dissolve the DNA.
 3. Close the tube and incubate for 10 minutes at room temperature.
 4. Briefly vortex the tube and then do a quick spin (less than 5000xg) to concentrate the liquid at the bottom.
 5. Store the suspended plasmid at -20°C. The DNA is stable for at least one year from date of shipping when stored at -20°C.
- RefSeq:** [NM_001195139.1](#), [NP_001182068.1](#)
- RefSeq ORF:** 2295 bp
- Locus ID:** 25839
- UniProt ID:** [Q9H9E3](#)
- Cytogenetics:** 16q22.1
- MW:** 87.6 kDa
- Gene Summary:** The protein encoded by this gene is a component of an oligomeric protein complex involved in the structure and function of the Golgi apparatus. Defects in this gene may be a cause of congenital disorder of glycosylation type IIj. Two transcript variants encoding different isoforms have been found for this gene.[provided by RefSeq, Aug 2010]

Product images:



Circular map for RC231407