

Product datasheet for **RC231380**

LRSAM1 (NM_001190723) Human Tagged ORF Clone

Product data:

Product Type:	Expression Plasmids
Product Name:	LRSAM1 (NM_001190723) Human Tagged ORF Clone
Tag:	Myc-DDK
Symbol:	LRSAM1
Synonyms:	CMT2P; RIFLE; TAL
Mammalian Cell Selection:	Neomycin
Vector:	pCMV6-Entry (PS100001)
E. coli Selection:	Kanamycin (25 ug/mL)



[View online »](#)

ORF Nucleotide Sequence:

>RC231380 representing NM_001190723
 Red=Cloning site Blue=ORF Green=Tags(s)

TTTTGTAATACGACTCACTATAGGGCGGCCGGAATTCGTCGACTGGATCCGGTACCGAGGAGATCTGCC
 GCC**CGGATCGCC**

ATGCCGCTCTTCTCCGGAAGCGGAAACCCAGTGAGGAGGCTCGGAAACGCCTGGAGTACCAGATGTGTT
 TGGCAAAAGAAGCTGGGGCAGATGACATTCTCGACATCTCTAAATGTGAGCTCTCAGAGATTCCATTGG
 AGCTTTTGCAACATGCAAAGTTCTGCAGAAGAAGTGCTGATCGTCCACACGAATCACCTCACTTCCCTG
 CTTCCAAATCTGCAGCCTCTGAGTCTGGCAACCATCAAGTTCTAGATCTCCACGATAATCAGCTGA
 CAGCCCTTCTGACGATCTGGGGCAGCTGACTGCCCTCCAGGCTTAAACGTGGAAGGAATCAACTGAT
 GCAGCTCCACGTTCCATTGGGAACCTGACCCAGCTCCAGACTCTCAATGTTAAAGACAACAAGCTGAAG
 GAGCTTCCAGACACCGTGGGGGAGCTTCGAAGCCTGCGTACCCTCAACATCAGTGGAAACGAGATCCAGA
 GATTGCCGCAGATGCTGGCTCACGTTCGAACCTGGAGATGCTGAGCCTTGACGCCTCGGCCATGGTCTA
 CCCGCCGGGAGGTGTGTGGTCCGGCCTGCGGCCATCTTGAGTTCTCTGCAAAGAGTCAGGGCTG
 GAATACTACCCCTTCTCAGTACTTGCTGCCAATTCGGAGCAAGATGGAATCGAGAACTCTCGGGACA
 GCCCTGATGGGCCACCGACAGATTCTCAAGGGAGGAGTTAGAGTGGCAGAACAGGTTCTCAGACTATGA
 GAAGAGGAAGGAACAGAAGATGCTGGAGAACTCGAGTTTGAACGGCGCTGGAAGTGGGGCAGCGGGAG
 CACACCCAGCTCCTTCAGCAGAGCAGCAGCCAGAAGGATGAGATCCTTCAGACGGTCAAGGAGGAGCAGT
 CCCGGCTGGAGCAGGGCCTGAGTGAACACAGCGCCACCTCAACGCAGAGCGGCAGCGGCTGCAGGAGCA
 GCTGAAGCAGACGGAACAGAACATTTCCAGCCGGATCCAGAAGCTGCTGCAGGACAATCAGAGACAAAAG
 AAAAGCTCCGAGATTTTAAAATCGCTGGAAAATGAAAGAATAAGAATGGAACAGTTGATGTCCATAACCC
 AGGAGGAGACTGAGAGCCTGCGGGCAGCTGACGTTGCCCTCCGCCATGCAGCAGATGCTGACTGAGAGCTG
 TAAGAACCGGCTCATCCAGATGGCCTACGAATCTCAGAGGCAGAACTTGGTCCAGCAGGCTGTTCCAGC
 ATGGCCGAAATGGATGAACGATTCCAGCAGATTCTGTCGTGGCAGCAAATGGATCAGAACAAGCCATCA
 GCCAGATCCTGCAGGAGAGCGGATGCAGAAGGCTGCGTTCGAGGCACTCCAGGTGAAGAAAGACCTGAT
 GCATCGGCAGATCAGGAGCCAGGAGATGATCTCGGAGCAGCGTGGGCCCTCAGCTCCCTGCTCCAGCAG
 CTGCTCAAAGAGAAGCAGCAGCGAGAGGAAGAGCTCCGGGAAATCCTGACGGAGTTAGAAGCCAAAAGTG
 AAACAGGCAGGAAAATTAAGGCTGATTCAGTATCAACGGCTTTTGAACCAGAAGCCCTTGTCTTGAA
 GCTGCAAGAAGAGGGGATGGAGCGCCAGCTGGTGGCCCTCCTGGAGGAGCTGTCGGCTGAGCACTACCTG
 CCCATCTTTGCGCACACCGCCTCTCACTGGACCTGCTGAGCCAAATGAGCCAGGGGACCTGGCCAAGG
 TGGGCGTCTCAGAAGCTGGCCTGCAGCAGGAGATCCTCCGGAGAGTCCAGGAACTGCTGGATGCAGCCAG
 GATCCAGCCAGAGCTGAAACCAATGGGTGAGGTCGTACCCCTACGGCCCCCAGGAGCCTCCTGAG
 TCTGTGAGGCCATCCGCTCCCCCTGCAGAGCTGGAGGTGCAGGCCTCAGAGTGTGTGCTGTGCTGGAAC
 GGGAGGCCAGATGATCTTCTCAACTGTGGCCAGTCTGCTGCTGCCAGCAGTGTGCCAGCCACTGCC
 CACTGCCCGCTGTGCCGCCAGGACATCGCCAGCGCCTCCGCATCTACCACAGCAGC

ACGCGTACGCGGGCCGCTCGAGCAGAACTCATCTCAGAAGAGGATCTGGCAGCAAATGATATCCTGGATT
 ACAAGGATGACGACGATAAGGTTTAA

Protein Sequence: >RC231380 representing NM_001190723
 Red=Cloning site Green=Tags(s)

MPLFFRKRKPSSEARKRLEYQMCLAKEAGADDILDISKCELSEIPFGAFATCKVLQKKVLIVHTNHLTSL
 LPKSCSLLSLATIKVLDLHDNQLTALPDDLQQLTALQVLNVERNQLMQLPRSIGNLTLQQLTLNVKDNKLLK
 ELPDVTGELRSLRTLNI SGNEIQRLPQMLAHVRTLEMLSLDASAMVYPPREVCGAGTAAIQLFLCKESGL
 EYPPSQYLLPILEQDGIENSRDSDPGPTDRFSREELEWQNRFSDEYKREKQKMLEKLEFERRLELQRE
 HTQLLQQSSSQKDEILQTVKKEQSRLEQGLSEHQRLNAERQRLQEQLKQTEQNISSRIQKLLQDNQRQK
 KSSEILKLENERIRMEQLMSITQEETESLRRRDVASAMQMLTESCKNRLIQMAYESQRQNLVQQACSS
 MAEMDERFQQILSWQQMDQNKAI SQILQESAMQKAAFEALQVKKDLMHRQIRSQEMISEQRWALSSLLQQ
 LLKEKQQREEELREILTELEAKSETRQENYWL IQYQRLLNQKPLSLKLQEEGMRQLVALLEELSAEHYL
 PIFAHRLSLDLLSQMSPGDLAKVGVSEAGLQHEILRRVQELLDAAARIQPELKPPMGEVVTPTAPQEPPE
 SVRPSAPPAELEVQASECVVCLEREAQMIFLNCGHVCCCQCCQLRTPCPLCRQDIAQRLRIYHSS

TRTRPLEQKLISEEDLAANDILDYKDDDDKV

Chromatograms: https://cdn.origene.com/chromatograms/mk8073_d02.zip

Restriction Sites: SgfI-MluI

Cloning Scheme:



ACCN: NM_001190723

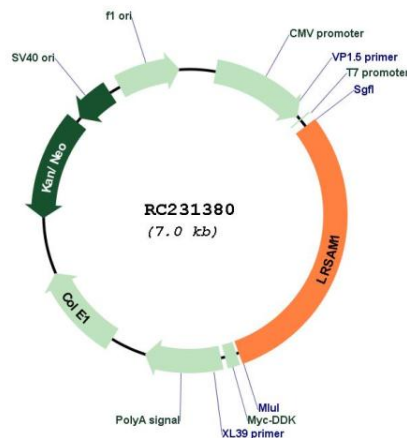
ORF Size: 2088 bp

OTI Disclaimer: The molecular sequence of this clone aligns with the gene accession number as a point of reference only. However, individual transcript sequences of the same gene can differ through naturally occurring variations (e.g. polymorphisms), each with its own valid existence. This clone is substantially in agreement with the reference, but a complete review of all prevailing variants is recommended prior to use. [More info](#)

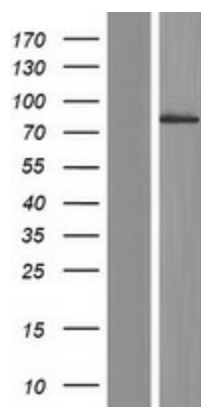
OTI Annotation: This clone was engineered to express the complete ORF with an expression tag. Expression varies depending on the nature of the gene.

Components:	The ORF clone is ion-exchange column purified and shipped in a 2D barcoded Matrix tube containing 10ug of transfection-ready, dried plasmid DNA (reconstitute with 100 ul of water).
Reconstitution Method:	<ol style="list-style-type: none"> 1. Centrifuge at 5,000xg for 5min. 2. Carefully open the tube and add 100ul of sterile water to dissolve the DNA. 3. Close the tube and incubate for 10 minutes at room temperature. 4. Briefly vortex the tube and then do a quick spin (less than 5000xg) to concentrate the liquid at the bottom. 5. Store the suspended plasmid at -20°C. The DNA is stable for at least one year from date of shipping when stored at -20°C.
RefSeq:	<u>NM_001190723.3</u>
RefSeq ORF:	2091 bp
Locus ID:	90678
UniProt ID:	<u>Q6UWE0</u>
Cytogenetics:	9q33.3-q34.11
Protein Families:	Druggable Genome
MW:	80.9 kDa
Gene Summary:	This gene encodes a ring finger protein involved in a variety of functions, including regulation of signaling pathways and cell adhesion, mediation of self-ubiquitylation, and involvement in cargo sorting during receptor endocytosis. Mutations in this gene have been associated with Charcot-Marie-Tooth disease. Multiple transcript variants encoding different isoforms have been identified for this gene. [provided by RefSeq, Jan 2012]

Product images:



Circular map for RC231380



Western blot validation of overexpression lysate (Cat# [LY434379]) using anti-DDK antibody (Cat# [TA50011-100]). Left: Cell lysates from untransfected HEK293T cells; Right: Cell lysates from HEK293T cells transfected with RC231380 using transfection reagent MegaTran 2.0 (Cat# [TT210002]).