

Product datasheet for **RC231376**

Dystrobrevin alpha (DTNA) (NM_001198939) Human Tagged ORF Clone

Product data:

Product Type:	Expression Plasmids
Product Name:	Dystrobrevin alpha (DTNA) (NM_001198939) Human Tagged ORF Clone
Tag:	Myc-DDK
Symbol:	Dystrobrevin alpha
Synonyms:	D18S892E; DRP3; DTN; DTN-A; LVNC1
Mammalian Cell Selection:	Neomycin
Vector:	pCMV6-Entry (PS100001)
E. coli Selection:	Kanamycin (25 ug/mL)



[View online »](#)

ORF Nucleotide Sequence:

>RC231376 representing NM_001198939
 Red=Cloning site Blue=ORF Green=Tags(s)

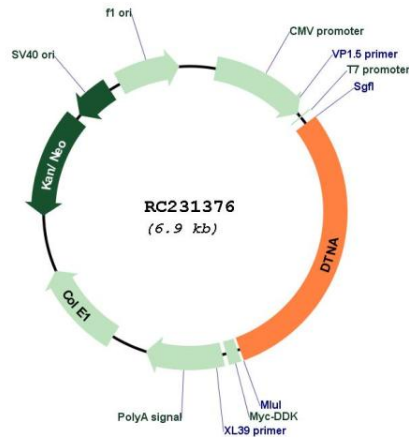
TTTTGTAATACGACTCACTATAGGGCGGCCGGAATTCGTCGACTGGATCCGGTACCGAGGAGATCTGCC
 GCC**CGGATCGCC**

ATGATTGAAGATAGTGGGAAAAGAGGAAATACCATGGCAGAAAGAAGACAGCTGTTTGCAGAGATGAGGG
 CTAAGATCTGGATCGCATCCGACTCTCCACCTACAGAACAGCATGCAAGCTTAGGTTTGTTCAGAAGAA
 ATGCAATTTGCACCTGGTGGACATATGGAATGTATAGAAGCATTGCGGGAAAATGCTCTGAACAACCTG
 GACCCAAACACTGAACTCAACGTGTCCCCTTAGAGGCTGTGCTCTCCACTATTTTTTACCAGCTCAACA
 AACGGATGCCAACACTCACAAATCCATGTGGAGCAGTCCATCAGCCTCCTCCTAACTCCTGCTTGC
 AGCGTTTGTATCCGGAAGGCCATGGTAAATTTTCAGTATTTGCTGTCAAAATGGCTTTAGCCACATTGTGT
 GGAGGGAAGATCATGGACAAATTAAGATATATTTTCTCAATGATTTCTGACTCCAGTGGGGTGATGGTTT
 ATGGACGATATGACCAATTCCTTCGGGAAGTTCTCAAACACCCAGGCAGTTTTTGAAGTCCCTCATT
 TGTTTACACAGAACAGTCAGCCAGATCCTGTTTCTCCCAACAGAAAAAGTCACGTTAAATGGTTTCTTG
 GACACGCTTATGTGAGATCCTCCCCCGAGTGTCTGGTCTGGTTGCCCTTCTGTCATCGACTAGCAAATG
 TGGAAAATGTCTTCCATCCGGTTGAGTGTCTCTACTGCCACAGTGAGAGTATGATGGGATTTTCGCTACCG
 ATGCCAACAGTGTCACAATTACCAGCTCTGTCCAGGACTGCTTCTGGAGGGGACATGCCGGTGGTTTTCAT
 AGCAACCAGCACCAATGAAAGAGTACACGTATGGAATCACCTGCTAAGAAGCTGACTAATGCATTA
 GCAAGTCCCTGAGCTGTGCTTCCAGCCGTGAACCTTTCACCCCATGTTCCAGATCAGCCTGAGAAGCC
 ACTCAACTGGCTCACATCGTGCCTCCCAGACCTGTAACCAGCATGAACGACACCCTGTTCTCCACTCT
 GTTCCCTCCTCAGGAAGTCTTTTATTACCAGGAGCATGCTTGAGAGTTCAAACCGGCTTGATGAAGAAC
 ACAGGCTAATTGCCAGGTATGCGGCAAGGCTGGCAGCAGAGTCTCTTCGCTCAGCCACCTCAGCAGAG
 AAGTGTCTCTGACATCTTTTACCATCGATGCGAATAAGCAGCAAAGGCAGCTGATTGCTGAGCTAGAA
 AACAAGAACAGAGAAATCTTACAGGAGATCCAGAGACTTCGGCTAGAGCATGAACAAGCTTCTCAGCCCA
 CGCCAGAGAAGGCACAGCAAAACCCACCTGCTGGCAGAACTCCGGCTCCTCAGACAGCGCAAAGATGA
 GCTGGAACAGAGAATGTCTGCTCTCCAGGAGAGCCGGAGAGAGCTAATGGTCCAGTTGGAGGGTCTCATG
 AAGCTACTAAAGGAAGAAGAACTGAAGCAGGAACTCAGGGGGCAGGCTCTCCCCGCTCCTCCCCAGCC
 ACACCATCAGCAGGCCAATTCCTATGCCATCCGGTCAGCGTCAGCCTGCTCCACCCGACGCACACGCC
 GCAGGACTCCCTCACAGGAGTAGGGGGAGATGTACAAGAGGCATTTGCACAAAGTTCAAGAAGAACTTA
 AGGAATGACTTGCTAGTGGCTGCAGATTCATCACTAACAATATGTCCTCTCTTGTGAAAGAGCTGAATT
 CTGAGGTTGGGAGTGAACAGAGAGTAATGTGGATTCTGAATTTGCACGGACTCAGTTTGAGGATCTTGT
 TCCTCACCAACCTCTGAAAAGGCTTTTCTAGCGCAAATCCATGCCGAAAACCTGGGTACATTCACAGT
 GGAGTACCACAAGTACCATGCGTGGCGACATGGTTACGGAGGATGCAGATCCCTATGTGACGCCTGAAG
 ATGAAAATATGAAAATGACTCTGTCCGGCAGCTGGAGAATGAGCTCCAGATGGAGGAATACCTGAAACA
 GAAGCTGCAAGATGAAGCTTATCAGGTCAGCTTGAAGGT

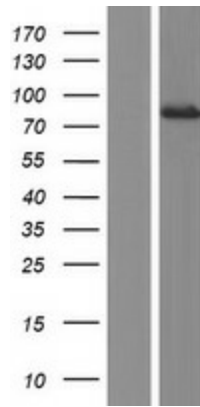
ACGCGTACGCGGCCGCTCGAGCAGAACTCATCTCAGAAGAGGATCTGGCAGCAAATGATATCCTGGATT
 ACAAGGATGACGACGATAAGGTTTAA

Components:	The ORF clone is ion-exchange column purified and shipped in a 2D barcoded Matrix tube containing 10ug of transfection-ready, dried plasmid DNA (reconstitute with 100 ul of water).
Reconstitution Method:	<ol style="list-style-type: none">1. Centrifuge at 5,000xg for 5min.2. Carefully open the tube and add 100ul of sterile water to dissolve the DNA.3. Close the tube and incubate for 10 minutes at room temperature.4. Briefly vortex the tube and then do a quick spin (less than 5000xg) to concentrate the liquid at the bottom.5. Store the suspended plasmid at -20°C. The DNA is stable for at least one year from date of shipping when stored at -20°C.
RefSeq:	NM_001198939.2
RefSeq ORF:	2073 bp
Locus ID:	1837
UniProt ID:	Q9Y4J8
Cytogenetics:	18q12.1
Protein Families:	Druggable Genome
MW:	78.5 kDa
Gene Summary:	The protein encoded by this gene belongs to the dystrobrevin subfamily of the dystrophin family. This protein is a component of the dystrophin-associated protein complex (DPC), which consists of dystrophin and several integral and peripheral membrane proteins, including dystroglycans, sarcoglycans, syntrophins and alpha- and beta-dystrobrevin. The DPC localizes to the sarcolemma and its disruption is associated with various forms of muscular dystrophy. Mutations in this gene are associated with left ventricular noncompaction with congenital heart defects. Multiple alternatively spliced transcript variants encoding different isoforms have been identified for this gene. [provided by RefSeq, Jul 2008]

Product images:



Circular map for RC231376



Western blot validation of overexpression lysate (Cat# [LY434375]) using anti-DDK antibody (Cat# [TA50011-100]). Left: Cell lysates from untransfected HEK293T cells; Right: Cell lysates from HEK293T cells transfected with RC231376 using transfection reagent MegaTran 2.0 (Cat# [TT210002]).