

Product datasheet for **RC231375**

PDE4D (NM_001197219) Human Tagged ORF Clone

Product data:

Product Type:	Expression Plasmids
Product Name:	PDE4D (NM_001197219) Human Tagged ORF Clone
Tag:	Myc-DDK
Symbol:	PDE4D
Synonyms:	ACRDYS2; DPDE3; HSPDE4D; PDE4DN2; PDE43; STRK1
Mammalian Cell Selection:	Neomycin
Vector:	pCMV6-Entry (PS100001)
E. coli Selection:	Kanamycin (25 ug/mL)



[View online »](#)

ORF Nucleotide
Sequence:

>RC231375 representing NM_001197219
Red=Cloning site Blue=ORF Green=Tags(s)

TTTTGTAATACGACTCACTATAGGGCGGCCGGAATTCGTCGACTGGATCCGGTACCGAGGAGATCTGCC
GCCGCGATCGCC

ATGGCTTTTGTGGGATCCTCTGGGAGCCACGGTGCCAGGACCATCTACAAGAGCCAAATCAAGATTGC
GTTTCTCAAAGTCTACAGTTTTGATGTGGACAATGGCACATCTGCGGGACGGAGTCCCTGGATCCCAT
GACCAGCCAGGATCCGGGCTAATTCTCCAAGCAAATTTGTCCACAGTCAACGACGGGAGTCTTCCTG
TATCGATCCGACAGGATTATGACCTCTCTCAAAGTCTATGTCCCGAACTCCTCCATTGCCAGTGATA
TACACGGAGATGACTTGATTGTGACTCCATTTGCTCAGGTCTTGCCAGTCTGCGAACTGTACGAAACAA
CTTTGCTGCATTAATAATTTGCAAGATCGAGCACCTAGCAAAGATCACCCATGTGCAACCAACCATCC
ATCAACAAAGCCACCATAACAGAGGAGGCCCTACCAGAACTGGCCAGCGAGACCTGGAGGAGCTGGACT
GGTGTCTGGACCAGCTAGAGACCCTACAGACCAGGCACTCCGTCACTGAGATGGCCTCCAACAAGTTAA
AAGGATGCTTAATCGGGAGCTCACCCATCTCTGAAATGAGTCGGTCTGGAAATCAAGTGTGAGATTT
ATATCAAACACATTCTTAGATAAGCAACATGAAGTGGAAATTCCTTCTCCAACTCAGAAGGAAAAGGAGA
AAAAGAAAAGACCAATGTCTCAGATCAGTGGAGTCAAGAAATGATGCACAGCTCTAGTCTGACTAATTC
AAGTATCCCAAGGTTTGGAGTAAAAGTGAACAAGAAGATGTCCTTGCCAAGGAACTAGAAGATGTGAAC
AAATGGGGTCTTCATGTTTTAGAAATAGCAGAGTTGTCTGGTAACCGGCCCTTACTGTTATCATGCACA
CCATTTTTCAGGAACGGGATTTATTAATAAATTTAAATTTCCAGTAGATACTTTAATTACATATCTTAT
GACTCTCGAAGACCATTACCATGCTGATGTGGCCTATCACAACAATATCCATGCTGCAGATGTTGTCCAG
TCTACTCATGTCTATTATCTACACCTGCTTTGGAGGCTGTGTTACAGATTTGGAGATTTTGCAGCAA
TTTTTGGCAGTGAATACATGATGATGATCATCCTGGTGTGCCAATCAATTTCTGATCAATACAAACTC
TGAACCTTGCCTTGATGTACAATGATTCCTCAGTCTTAGAGAACCATCATTGGCTGTGGCTTTAAATTG
CTTCAGGAAGAAAAGTGTGACATTTTCCAGAATTTGACCAAAAAACAAAGACAATCTTTAAGGAAAATGG
TCATTGACATCGTACTTGCAACAGATATGTCAAAACACATGAATCTACTGGCTGATTTGAAGACTATGGT
TGAAACTAAGAAAGTGAACAGCTCTGGAGTCTTCTTCTTGATAATTATCCGATAGGATTCAGGTTCTT
CAGAATATGGTGCAGTGTGCAGATCTGAGCAACCAACAAAGCCTCTCCAGCTGTACCGCCAGTGGACGG
ACCGGATAATGGAGGAGTCTTCCGCCAAGGAGACCGAGAGAGGGAACGTGGCATGGAGATAAGCCCAT
GTGTGACAAGCACAATGCTTCCGTGAAAAATCACAGGTGGGCTTCATAGACTATATTGTTTCATCCCCTC
TGGGAGACATGGGAGACCTCGTCCACCCTGACGCCAGGATATTTGGACACTTTGGAGGACAATCGTG
AATGGTACCAGAGCAATCCCTCAGAGCCCTCTCCTGCACCTGATGACCCAGAGGAGGCCGGCAGGG
TCAAACAGAGAAATCCAGTTTGAACAACTTTAGAGGAAGATGGTGAAGTCAAGACACGAAAAGGACAGT
GGCAGTCAAGTGAAGAAGACACTAGCTGCAGTACTCCAAGACTCTTTGTAAGTCAAGACTCAGAGTCTA
CTGAAATTCCTTGTGAAACAGGTTGAAGAGGAGGAGTGGGGAAGAAGAGGAAAGCCAGCCTGAAGC
CTGTGTCATAGATGATCGTTCTCCTGACACG

ACGCGTACGCGGCCGCTCGAGCAGAACTCATCTCAGAAGAGGATCTGGCAGCAATGATATCCTGGATT
ACAAGGATGACGACGATAAGGTTTAA

Protein Sequence: >RC231375 representing NM_001197219
 Red=Cloning site Green=Tags(s)

MAFVWDPLGATVPGPSTRAKSRRLRFKSYSFDVDNGTSAGRSPLDPMTPSGSGLILQANFVHSQRRESFL
 YRSDSDYDLSPKSMSRNSIASDIHGDDLIVTPFAQVLAASLRTVRNNFAALTNLQDRAPSKRSPMCNQPS
 INKATITEEAYQKLASETLEELDWCLDQLETLQTRHSVSEMASNFKRMLNRELTHLSEMSRSGNQVSEF
 ISNTFLDKQHEVEIPSPQKEKEKKRPMSSQISGVKMLMHSSSLTNSSIPRFGVKTEQEDVLAKELEDVN
 KWGLHVFRIAEELSGNRPLTVIMHTIFQERDLLKTFKIPVDLITYLMTLEDHYHADVAYHNNIHAADVQ
 STHVLLSTPALEAVFTDLEILAAIFASAIHDVDHPGVSNQFLINTNSELALMYNDSSVLENHHLAVGFKL
 LQEENCDFQNLTKKQRQSLRKMVIDIVLATDMSKHMNLLADLKTVMETKVTSSGVLDDNYSDRIQVL
 QNMVHCADLSNPTKPLQLYRQWTRIMEEFFRQGDREERERGMEISPMCDKHNASVEKSQVGFIDYIVHPL
 WETWADLVHPDAQDILDLTLEDNREWYQSTIPQSPSPAPDDPEEGRQGQTEKFQFELTLEEDGESDTEKDS
 GSQVEEDTSCSDSKTLCTQDSESTEIPLDEQVEEEAVGEEESQPEACVIDDRSPDT

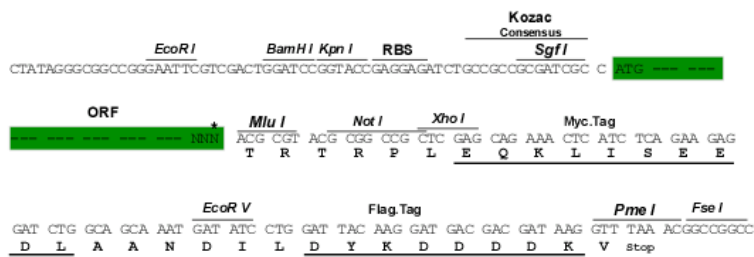
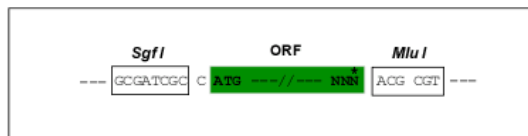
TRTRPLEQKLISEEDLAANDILDYKDDDDKV

Chromatograms: https://cdn.origene.com/chromatograms/mk8073_a01.zip

Restriction Sites: SgfI-MluI

Cloning Scheme:

Cloning sites used for ORF Shuttling:



* The last codon before the Stop codon of the ORF

ACCN: NM_001197219

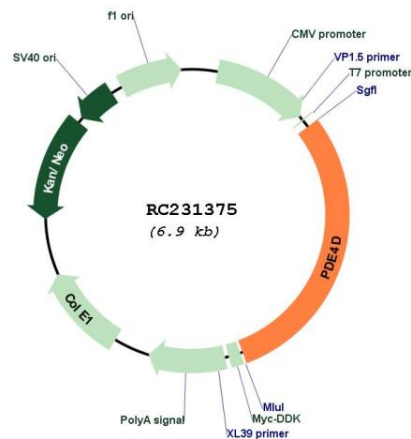
ORF Size: 2061 bp

OTI Disclaimer: The molecular sequence of this clone aligns with the gene accession number as a point of reference only. However, individual transcript sequences of the same gene can differ through naturally occurring variations (e.g. polymorphisms), each with its own valid existence. This clone is substantially in agreement with the reference, but a complete review of all prevailing variants is recommended prior to use. [More info](#)

OTI Annotation: This clone was engineered to express the complete ORF with an expression tag. Expression varies depending on the nature of the gene.

Components:	The ORF clone is ion-exchange column purified and shipped in a 2D barcoded Matrix tube containing 10ug of transfection-ready, dried plasmid DNA (reconstitute with 100 ul of water).
Reconstitution Method:	<ol style="list-style-type: none"> 1. Centrifuge at 5,000xg for 5min. 2. Carefully open the tube and add 100ul of sterile water to dissolve the DNA. 3. Close the tube and incubate for 10 minutes at room temperature. 4. Briefly vortex the tube and then do a quick spin (less than 5000xg) to concentrate the liquid at the bottom. 5. Store the suspended plasmid at -20°C. The DNA is stable for at least one year from date of shipping when stored at -20°C.
RefSeq:	<u>NM_001197219.2</u>
RefSeq ORF:	2064 bp
Locus ID:	5144
UniProt ID:	<u>Q08499</u>
Cytogenetics:	5q11.2-q12.1
Protein Families:	Druggable Genome
Protein Pathways:	Progesterone-mediated oocyte maturation, Purine metabolism
MW:	78.2 kDa
Gene Summary:	This gene encodes one of four mammalian counterparts to the fruit fly 'dunce' gene. The encoded protein has 3',5'-cyclic-AMP phosphodiesterase activity and degrades cAMP, which acts as a signal transduction molecule in multiple cell types. This gene uses different promoters to generate multiple alternatively spliced transcript variants that encode functional proteins.[provided by RefSeq, Sep 2009]

Product images:



Circular map for RC231375