

Product datasheet for **RC231374**

Dystrobrevin alpha (DTNA) (NM_001198940) Human Tagged ORF Clone

Product data:

Product Type:	Expression Plasmids
Product Name:	Dystrobrevin alpha (DTNA) (NM_001198940) Human Tagged ORF Clone
Tag:	Myc-DDK
Symbol:	Dystrobrevin alpha
Synonyms:	D18S892E; DRP3; DTN; DTN-A; LVNC1
Mammalian Cell Selection:	Neomycin
Vector:	pCMV6-Entry (PS100001)
E. coli Selection:	Kanamycin (25 ug/mL)



[View online »](#)

**ORF Nucleotide
Sequence:**

>RC231374 representing NM_001198940
 Red=Cloning site Blue=ORF Green=Tags(s)

TTTTGTAATACGACTCACTATAGGGCGGCCGGAATTCGTCGACTGGATCCGGTACCGAGGAGATCTGCC
 GCC**CGGATCGCC**

ATGATTGAAGATAGTGGGAAAAGAGGAAATACCATGGCAGAAAGAAGACAGCTGTTTGCAGAGATGAGGG
 CTAAGATCTGGATCGCATCCGACTCTCCACCTACAGAACAGCATGCAAGCTTAGGTTTGTTCAGAAGAA
 ATGCAATTTGCACCTGGTGGACATATGGAATGTATAGAAGCATTGCGGGAAAATGCTCTGAACAACCTG
 GACCCAAACACTGAACTCAACGTGTCCCCTTAGAGGCTGTGCTCTCCACTATTTTTTACCAGCTCAACA
 AACGGATGCCAACACTCACAAATCCATGTGGAGCAGTCCATCAGCCTCCTCCTAACTTCTGCTTGC
 AGCGTTTGTATCCGGAAGGCCATGGTAAATTTCAAGTATTTGCTGTCAAAATGGCTTTAGCCACATTTGT
 GGAGGGAAGATCATGGACAAATTAAGATATATTTTCTCAATGATTTCTGACTCCAGTGGGTGATGGTTT
 ATGGACGATATGACCAATTCCTTCGGGAAGTTCTCAAACACCCAGGCGAGTTTTTGAAGGTCCTTCATT
 TGTTTACACAGAACAGTCAGCCAGATCCTGTTTCTCCCAACAGAAAAAGTCACGTTAAATGGTTTCTTG
 GACACGCTTATGTGAGATCCTCCCCCGAGTGTCTGGTCTGGTTGCCTCTTCTGCATCGACTAGCAAATG
 TGGAAAATGTCTTCCATCCGGTTGAGTGTCTCTACTGCCACAGTGAAGATGATGGGATTTTCGCTACCG
 ATGCCAACAGTGTCACAATTACCAGCTCTGTCCAGGACTGCTTCTGGAGGGGACATGCCGGTGGTTTCTCAT
 AGCAACCAGCACCAATGAAAGAGTACACGTATGGAATCACCTGTAAAGAGCTGACTAATGCATTA
 GCAAGTCCCTGAGCTGTGCTTCCAGCCGTGAACCTTTCACCCCATGTTCCAGATCAGCCTGAGAAGCC
 ACTCAACTGGCTCACATCGTGCCTCCCAGACCTGTAACCAGCATGAACGACACCCTGTTCTCCACTCT
 GTTCCCTCCTCAGGAAGTCTTTTATTACCAGGAGCATGCTTGAGAGTTCAAACCGGCTTGATGAAGAAC
 ACAGGCTAATTGCCAGGTATGCGGCAAGGCTGGCAGCAGAGTCTCTTCTGCTCAGCCACCTCAGCAGAG
 AAGTGCTCCTGACATCTTTTACCATCGATGCGAATAAGCAGCAAAGGAGCTGATTGCTGAGCTAGAA
 AACAAGAACAGAGAAATCTTACAGGAGATCCAGAGACTTCGGCTAGAGCATGAACAAGCTTCTCAGCCCA
 CGCCAGAGAAGGCACAGCAAAACCCACCTGCTGGCAGAACTCCGGCTCCTCAGACAGCGCAAAGATGA
 GCTGGAACAGAGAATGTCTGCTCTCCAGGAGAGCCGGAGAGAGCTAATGGTCCAGTTGGAGGGTCTCATG
 AAGCTACTAAAGACTCAGGGGGCAGGCTCTCCCCGCTCCTCCCCAGCCACACCATCAGCAGGCCAATTC
 CCATGCCATCCGGTCAGCGTCAGCCTGCTCCACCCGACGCACACGCCGAGGACTCCCTCACAGGAGT
 AGGGGGAGATGTACAAGAGGCATTTGCACAAAGTTCAAGAAGAACTTAAGGAATGACTTGTAGTGGCT
 GCAGATCCATCACTAACAATATGCTCTCTTGTGAAAGAGCTGAATTCGAGGTTGGGAGTGAACAG
 AGAGTAATGTGGATTCTGAATTTGCACGACTCAGTTTGAGGATCTTGTCCCTCACCACCTCTGAAAA
 GGCTTTTCTAGCGCAATCCATGCCGAAAACCTGGGTACATTCAGTGGAGTACCACAAGTACCATG
 CGTGGCGACATGGTTACGGAGGATGCAGATCCCTATGTGCAGCCTGAAGATGAAAATATGAAAATGACT
 CTGTCCGGCAGCTGGAGAATGAGCTCCAGATGGAGGAATACCTGAAACAGAAAGCTGCAAGATGAGCTTA
 TCAGGTCAGCTTGCAAGGT

ACGCGTACGCGGGCCGCTCGAGCAGAAACTCATCTCAGAAGAGGATCTGGCAGCAATGATATCCTGGATT
 ACAAGGATGACGACGATAAGGTTTAA

Protein Sequence: >RC231374 representing NM_001198940
Red=Cloning site Green=Tags(s)

```

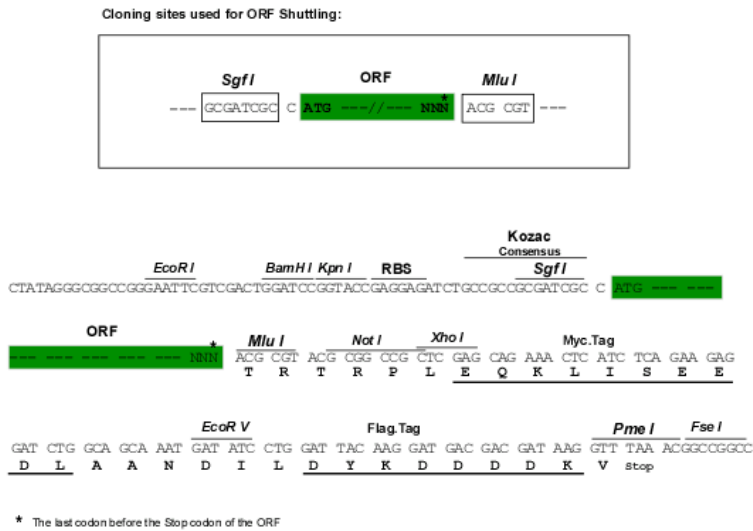
MIEDSGKRGNTMAERRQLFAEMRAQDLDRIRLSTYRTACKLRFVQKKNLHLVDIWNVIEALRENALNNL
DPNTELNVSRLAVLSTIFYQLNKRMPPTHQIHVEQSISSLLNFLLAADFPEGHGKISVFAVKMALATLC
GGKIMDKLRYIFSMISDSSGVMVYGRYDQFLREVLKLP TAVFEGPSFGYTEQSARSCFSQQKQVTLNGFL
DTLMSDPPPPQCLVWLPLLHRLANVENVFHPVECSYCHSESMGFRYRCQQQCHNYQLCQDCFWRHAGGSH
SNQHQMKEYTSWKSPAKKLTNALSKSLSCASSREPLHPMFPDQPEKPLNLAHIVPPRPVTSMNDTLF SHS
VPSSGSPFITRSMLESSNRLDEEHRLIARYAARLAAESSSSQPPQORSAPDISFTIDANKQQRQLIAELE
NKNREILQEIQRLRLEHEQASQPTPEKAQQNPTLLAELRLLRQRKDELEQRMSALQESRRELMVQLEGLM
KLLKTQGAGSPRSSPSTISRPIMPPIRSASACSTPHTPQDSL TGVGGDVQEAFAQSSRRNLNRDLLVA
ADSI TINTMSSLVKELNSEV GSETESNV DSEFARTQFEDL VPSPTSEKAFLAQIHARKPGYI HSGATTSTM
RGMVMTEDADPYVQPEDENYENDSVRQLENELQMEEYLKQKLQDEAYQVSLQG
    
```

TRTRPLEQKLISEEDLAANDILDYKDDDDKV

Chromatograms: https://cdn.origene.com/chromatograms/mk8072_g08.zip

Restriction Sites: SgfI-MluI

Cloning Scheme:



ACCN: NM_001198940

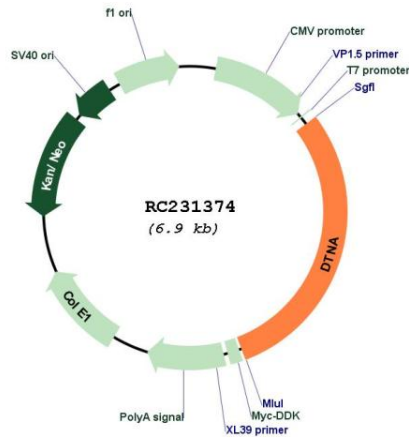
ORF Size: 2049 bp

OTI Disclaimer: The molecular sequence of this clone aligns with the gene accession number as a point of reference only. However, individual transcript sequences of the same gene can differ through naturally occurring variations (e.g. polymorphisms), each with its own valid existence. This clone is substantially in agreement with the reference, but a complete review of all prevailing variants is recommended prior to use. [More info](#)

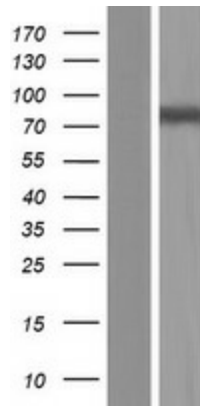
OTI Annotation: This clone was engineered to express the complete ORF with an expression tag. Expression varies depending on the nature of the gene.

Components:	The ORF clone is ion-exchange column purified and shipped in a 2D barcoded Matrix tube containing 10ug of transfection-ready, dried plasmid DNA (reconstitute with 100 ul of water).
Reconstitution Method:	<ol style="list-style-type: none">1. Centrifuge at 5,000xg for 5min.2. Carefully open the tube and add 100ul of sterile water to dissolve the DNA.3. Close the tube and incubate for 10 minutes at room temperature.4. Briefly vortex the tube and then do a quick spin (less than 5000xg) to concentrate the liquid at the bottom.5. Store the suspended plasmid at -20°C. The DNA is stable for at least one year from date of shipping when stored at -20°C.
RefSeq:	NM_001198940.2
RefSeq ORF:	2052 bp
Locus ID:	1837
UniProt ID:	Q9Y4J8
Cytogenetics:	18q12.1
Protein Families:	Druggable Genome
MW:	77.7 kDa
Gene Summary:	The protein encoded by this gene belongs to the dystrobrevin subfamily of the dystrophin family. This protein is a component of the dystrophin-associated protein complex (DPC), which consists of dystrophin and several integral and peripheral membrane proteins, including dystroglycans, sarcoglycans, syntrophins and alpha- and beta-dystrobrevin. The DPC localizes to the sarcolemma and its disruption is associated with various forms of muscular dystrophy. Mutations in this gene are associated with left ventricular noncompaction with congenital heart defects. Multiple alternatively spliced transcript variants encoding different isoforms have been identified for this gene. [provided by RefSeq, Jul 2008]

Product images:



Circular map for RC231374



Western blot validation of overexpression lysate (Cat# [LY434373]) using anti-DDK antibody (Cat# [TA50011-100]). Left: Cell lysates from untransfected HEK293T cells; Right: Cell lysates from HEK293T cells transfected with RC231374 using transfection reagent MegaTran 2.0 (Cat# [TT210002]).