

Product datasheet for **RC231369**

PDE4D (NM_001197220) Human Tagged ORF Clone

Product data:

Product Type:	Expression Plasmids
Product Name:	PDE4D (NM_001197220) Human Tagged ORF Clone
Tag:	Myc-DDK
Symbol:	PDE4D
Synonyms:	ACRDYS2; DPDE3; HSPDE4D; PDE4DN2; PDE43; STRK1
Mammalian Cell Selection:	Neomycin
Vector:	pCMV6-Entry (PS100001)
E. coli Selection:	Kanamycin (25 ug/mL)



[View online »](#)

ORF Nucleotide
Sequence:

>RC231369 representing NM_001197220
Red=Cloning site Blue=ORF Green=Tags(s)

TTTTGTAATACGACTCACTATAGGGCGGCCGGAATTCGTCGACTGGATCCGGTACCGAGGAGATCTGCC
GCC**CGGATCGCC**

ATGAGCATTATTATGAAGCCAAGATCCCGATCTACAAGTTCCTAAGGACTGCAGAGGCAGTTGTTTTG
ATGTGGACAATGGCACATCTGCGGGACGGAGTCCCTTGGATCCCATGACCAGCCCAGGATCCGGGCTAAT
TCTCCAAGCAAATTTTGTCCACAGTCAACGACGGGAGTCCCTCCTGTATCGATCCGACAGCGATTATGAC
CTCTCTCCAAAGTCTATGTCCCGGAACCTCCATTGCCAGTGATATACACGGAGATGACTTGATTGTGA
CTCCATTTGCTCAGGTCTTGGCCAGTCTGCGAACTGTACGAAACAACCTTGTGTCATTAACATAATTTGCA
AGATCGAGCACCTAGCAAAGATCACCCATGTGCAACCAACCATCCATCAACAAAGCCACCATAACAGAG
GAGGCCTACCAGAAACTGGCCAGCGAGACCCTGGAGGAGCTGGACTGGTGTCTGGACCAGCTAGAGACCC
TACAGACCAGGCACTCCGTCAGTGAGATGGCCTCCAACAAGTTTAAAAGGATGCTTAATCGGGAGCTCAC
CCATCTCTGAAATGAGTCGGTCTGAAATCAAGTGTGACAGTTTATATCAAACACATTCTTAGATAAG
CAACATGAAGTGAAATTCCTTCTCCAACCTCAGAAGGAAAAGGAGAAAAAGAAAGACCAATGTCTCAGA
TCAGTGGAGTCAAGAAATGATGCACAGCTCTAGTCTGACTAATCAAGTATCCCAGGTTTGGAGTTAA
AACTGAACAAGAAGATGTCTTGCCAAGGAACTAGAAGATGTGAACAAATGGGGTCTTATGTTTTTCAGA
ATAGCAGAGTTGTCTGGTAACCGGCCCTTGACTGTTATCATGCACACCATTTTTTCAGGAACGGGATTTAT
TAAAAACATTTAAAAATCCAGTAGATACTTTAATTACATATCTTATGACTCTCGAAGACCATTACCATGC
TGATGTGGCCTATCACAACAATATCCATGCTGCAGATGTTGTCCAGTCTACTCATGTGCTATTATCTACA
CCTGCTTTGGAGGCTGTGTTTACAGATTTGGAGATTCTTGACGCAATTTTTGCCAGTGAATACATGATG
TAGATCATCCTGGTGTGTCCAATCAATTTCTGATCAATACAAACTCTGAACTTGCCTTGATGACAATGA
TTCCTCAGTCTTAGAGAACCATCATTGGCTGTGGGCTTTAAATGCTTCAGGAAGAAAACCTGTGACATT
TCCAGAATTTGACCAAAAAACAAGACAATCTTTAAGGAAAATGGTCATTGACATCGTACTTGCAACAG
ATATGTCAAAACACATGAATCTACTGGCTGATTTGAAGACTATGGTTGAAACTAAGAAAAGTACAAGCTC
TGGAGTTCTTCTTCTTGATAATTATCCGATAGGATTCAGGTTCTTCAGAATATGGTGCAGTGTGCAGAT
CTGAGCAACCCAAACAAGCCTCTCCAGCTGTACCGCCAGTGGACGGACCGGATAATGGAGGATTTCTCC
GCCAAGGAGACCGAGAGAGGGAACGTGGCATGGAGATAAGCCCCATGTGTGACAAGCACAATGCTCCGT
GGAAAAATCACAGGTGGGCTTCATAGACTATATTGTTTCATCCCCTCTGGGAGACATGGGCAGACCTCGT
CACCTGACGCCAGGATATTTTGGACTTTGGAGACAATCGTGAATGGTACCAGAGCACAATCCCTC
AGAGCCCCTCTCCTGCACCTGATGACCCAGAGGAGGGCCGGCAGGGTCAAACCTGAGAAATCCAGTTTGA
ACTAACTTTAGAGGAAGATGGTGAAGTGCAGACACGGAAAAGGACAGTGGCAGTCAAGTGAAGAAAGACT
AGCTGCAGTGAAGACTCTTTGACTCAAGACTCAGAGTCTACTGAAATCCCTTGTGAAACAGG
TTGAAGAGGAGGAGTAGGGGAAGAAGAGGAAAGCCAGCTGAAGCCTGTGTCATAGATGATCGTTCTCC
TGACACG

ACGCGTACGCGGCCGCTCGAGCAGAACTCATCTCAGAAGAGGATCTGGCAGCAATGATATCCTGGATT
ACAAGGATGACGACGATAAGGTTTAA

OTI Disclaimer: Due to the inherent nature of this plasmid, standard methods to replicate additional amounts of DNA in E. coli are highly likely to result in mutations and/or rearrangements. Therefore, OriGene does not guarantee the capability to replicate this plasmid DNA. Additional amounts of DNA can be purchased from OriGene with batch-specific, full-sequence verification at a reduced cost. Please contact our customer care team at custsupport@origene.com or by calling 301.340.3188 option 3 for pricing and delivery.

The molecular sequence of this clone aligns with the gene accession number as a point of reference only. However, individual transcript sequences of the same gene can differ through naturally occurring variations (e.g. polymorphisms), each with its own valid existence. This clone is substantially in agreement with the reference, but a complete review of all prevailing variants is recommended prior to use. [More info](#)

OTI Annotation: This clone was engineered to express the complete ORF with an expression tag. Expression varies depending on the nature of the gene.

Components: The ORF clone is ion-exchange column purified and shipped in a 2D barcoded Matrix tube containing 10ug of transfection-ready, dried plasmid DNA (reconstitute with 100 ul of water).

Reconstitution Method:

1. Centrifuge at 5,000xg for 5min.
2. Carefully open the tube and add 100ul of sterile water to dissolve the DNA.
3. Close the tube and incubate for 10 minutes at room temperature.
4. Briefly vortex the tube and then do a quick spin (less than 5000xg) to concentrate the liquid at the bottom.
5. Store the suspended plasmid at -20°C. The DNA is stable for at least one year from date of shipping when stored at -20°C.

RefSeq: [NM_001197220.2](#)

RefSeq ORF: 2040 bp

Locus ID: 5144

UniProt ID: [Q08499](#)

Cytogenetics: 5q11.2-q12.1

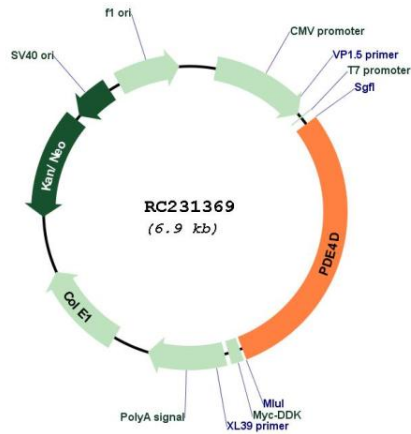
Protein Families: Druggable Genome

Protein Pathways: Progesterone-mediated oocyte maturation, Purine metabolism

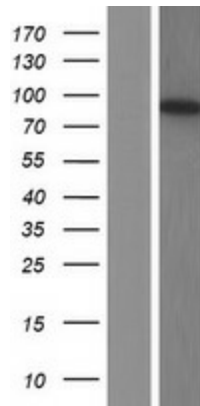
MW: 77.3 kDa

Gene Summary: This gene encodes one of four mammalian counterparts to the fruit fly 'dunce' gene. The encoded protein has 3',5'-cyclic-AMP phosphodiesterase activity and degrades cAMP, which acts as a signal transduction molecule in multiple cell types. This gene uses different promoters to generate multiple alternatively spliced transcript variants that encode functional proteins.[provided by RefSeq, Sep 2009]

Product images:



Circular map for RC231369



Western blot validation of overexpression lysate (Cat# [LY434368]) using anti-DDK antibody (Cat# [TA50011-100]). Left: Cell lysates from untransfected HEK293T cells; Right: Cell lysates from HEK293T cells transfected with RC231369 using transfection reagent MegaTran 2.0 (Cat# [TT210002]).