

Product datasheet for **RC231357**

Enconsin (MAP7) (NM_001198617) Human Tagged ORF Clone

Product data:

Product Type:	Expression Plasmids
Product Name:	Enconsin (MAP7) (NM_001198617) Human Tagged ORF Clone
Tag:	Myc-DDK
Symbol:	Enconsin
Synonyms:	E-MAP-115; EMAP115
Mammalian Cell Selection:	Neomycin
Vector:	pCMV6-Entry (PS100001)
E. coli Selection:	Kanamycin (25 ug/mL)



[View online »](#)

ORF Nucleotide Sequence:

>RC231357 representing NM_001198617
 Red=Cloning site Blue=ORF Green=Tags(s)

TTTTGTAATACGACTCACTATAGGGCGGCCGGGAATTCGTCGACTGGATCCGGTACCGAGGAGATCTGCC
 GCC**CGGATCGCC**

ATGGCGGAGCTAGGAGCTGGCGGCGACGGCCACAGGGCGGCGACGGCGCAGTGCGAAGCGAAACAGCAC
 CCGACAGCTACAAAGTGCAAGATAAGAAAAATGCCTCCAGCCGCCCTGCCTCTGCAATTCAGGACAAAA
 TAACAACCACTCAGGAAATAAACAGACCTCCGCCTGTGTTACGTGTTGATGACCGGCAGCGGCTGGCC
 CGGGAGCGACGTGAGAACGGGAGAAACAGCTAGATCCAGACAGGCGGTGAGTTCCACCATGAATCTTT
 CGAAATATGTTGATCCCCTCATTAGCAAGCGGCTCTCCTCTTCTGCAACTTTACTAAATTCACAGA
 TAGAGCTCGCCGCTGCAGCTCAGCCCATGGGAGAGCAGCGTTGTTAACAGACTCCTGACGCCACACAT
 TCGTTCCTGGCCAGAAGTAAAAGCACAGCTGCCTTGTCTGGAGAAGCAGCATCTTGACGCCCATCATCA
 TGCCCTACAAAGCTGCACACTCTAGAAATTCGATGGATCGACAAAACCTTTTGTAAACACCCTGAGGG
 CTCTTCTCGCAGGAGGATCATTATGGCACAGCGAGCTATAAAAAAGAAAGAGAGAGAGAAAATGTACTC
 TTCTCAGATCTGGCACCGAAGGGCTGTATCTCCATCTAATCCCAAAGCAAGACAACCGCTCGCTCCC
 GACTTTGGCTTCCGTCCAAGTCTCTTCCCTATTTGCCTGGCACACCCAGACCGACATCCTCCTTGCACC
 CGGCTCAGTCAAAGCTGCTCCTGCTCAGGTCGGCCCCATCCCCGGCAACATCCGCCCTGTCAAGAGG
 GAAGTCAAAGTGGAGCCTGAGAAGAAAGATCCTGAGAAGGAACCTCAGAAAGTTGCCAATGAGCCCTCAC
 TAAAGGGCAGAGCACCTTTAGTGAAGGTAGAAGAAGCCACAGTTGAAGAGCGGACACCTGCTGAACCAGA
 AGTTGGCCCTGCTGCTCCAGCCATGGCCCCAGCTCCAGCCTCGGCCCCAGCTCCAGCCTCGGCCCCAGCT
 CCAGCCCCGGTCCCCACCCAGCCATGGTCTCAGCCCCGTATCCACTGTGAATGCCAGTGTCTTGTTA
 AGACTTCTGCAGGCACCACCCAGCCAGAGGAGGCCACAAGGCTTCTAGCTGAGAAGAGGCGGCTGGCCCG
 AGAGCAGAGAGAAAAGGAAGAAAGGGAGAGGAGGAGCAGGAAGAGCTTGAAAGACAAAAGAGAGAGGAA
 TTGGCTCAACGTGTGGCTGAAGAGAGGACGACTCGCCGTGAGGAGGAGTGCAGCAGGCTGGAAGCCGAGC
 AGGCCCGGAGAGAAGGAGGAGCAGCTGCAGCGCAGGCGGAGGAGCGGGCCTGCAGCAGCGGGAGGAGGC
 AGAGCGCGCCAGAGGCAGAAAGAAGAAGAAGCTCGCGTTCGTGAAGAAGCAGAGAGGGTCCGGCAGGAA
 CGAGAGAAGCATTTCAGAGAGAAGAGCAAGAGCGCCTGGAGAGAAAGAAGCGACTTGAGGAGATTATGA
 AAAGAACCAGGAGAACAGAAGCTACAGATAAGAAAACAGTGATCAGAGAAACGGTGATATAGCCAAGGG
 AGCTCTCACTGGAGGAACAGAGGTGTCTGCACTCCATGTACAACAAACGCTCCGGGAAATGAAAGCCA
 GTTGGCAGCCACATGTGGTTACCTCACACCAGTCAAAGTGACAGTGGAGAGCACTCCCGATTTGGAAA
 AACAAACCAATGAAAATGGTGTATCTGTTGAGAATGAAAATTTTGAAGAAATTATAAACTTACCCATTGG
 ATCTAAACCATCCAGATTAGATGTCACCAACAGTGAGAGCCCAGAAATTCCTTTGAATCCAATTTGGCC
 TTTGATGATGAAGGGACACTTGGGCCCTGCCTCAGGTAGATGGTGTTCAGACACAGCACTGCAGAAG
 TTATA

ACGCGTACGCGGCCGCTCGAGCAGAAACTCATCTCAGAAGAGGATCTGGCAGCAATGATATCCTGGATT
 ACAAGGATGACGACGATAAGGTTTAA

Protein Sequence: >RC231357 representing NM_001198617
 Red=Cloning site Green=Tags(s)

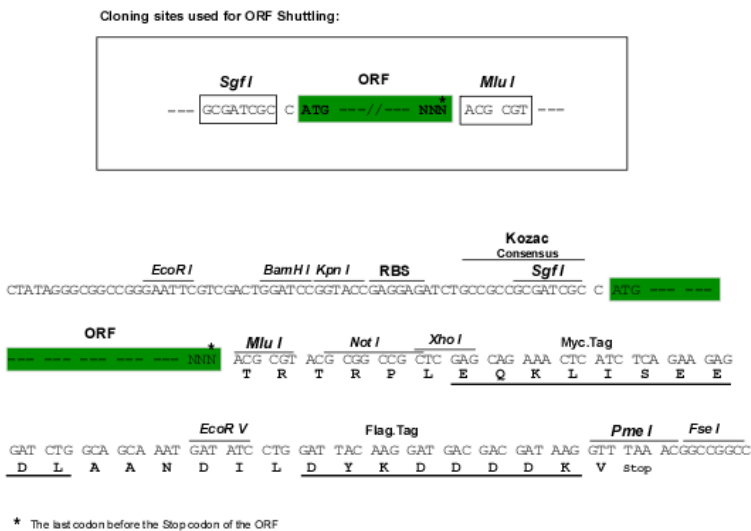
MAELGAGDGHRRGGDGA VRSETAPDSYKVDKKNASSRPASAI SGQNNNHSGNKPDPPPVLRVDDRQLA
 RERREEREKQLDPDRRSVSTMNLSKYVDPVISKRLSSSSATLLNSPDRARRLQLSPWESSVYVNRLLTPTH
 SFLARSKSTAALSGEAASCSP IIMPYKAAHSRNSMDRPKL FVTPPEGSSRRRI IHGTASYKKERENVL
 FLTSGTRRAVSPSNPKARQPARSRLWLP SKSLPHLPGTTPRPTSSLPPGSVKAAPAQVRPPSPGNI RPVKR
 EVKVEPEKKDPEKEPQKVANEP SLKGRAPLVKVEEATVEERTPAEPEVGP AAPAMAPAPASAPASAPA
 PAPVPTPAMVSAPSSTVNASASVKTSAGT TDPEEATRLLAEKRRLAREQREKEERERREQEELERQKREE
 LAQRVAEERTTRREEESRRLAEQA REKEEQLQRQAEEERALREREEAERAQRQKEEEARVREEAERVQR
 REKHFQREEQERLERKKRLEEIMKRTRRTEATDKKTS DQRNGDI AKGAL TGGTEVSALPCTTNAPGNKGP
 VGSPhvvtshQskvtvestpDLEKQPNENGVS VQNFEEIINLP IGSKPSRLDVTNSE SPEIPLNPILA
 FDDEGTLG PLPQVDG VQTQTAEVI

TRTRPLEQKLI SEEDLAANDILDYKDDDDKV

Chromatograms: https://cdn.origene.com/chromatograms/mk8071_f06.zip

Restriction Sites: SgfI-MluI

Cloning Scheme:



ACCN: NM_001198617

ORF Size: 1965 bp

OTI Disclaimer: The molecular sequence of this clone aligns with the gene accession number as a point of reference only. However, individual transcript sequences of the same gene can differ through naturally occurring variations (e.g. polymorphisms), each with its own valid existence. This clone is substantially in agreement with the reference, but a complete review of all prevailing variants is recommended prior to use. [More info](#)

OTI Annotation: This clone was engineered to express the complete ORF with an expression tag. Expression varies depending on the nature of the gene.

Components: The ORF clone is ion-exchange column purified and shipped in a 2D barcoded Matrix tube containing 10ug of transfection-ready, dried plasmid DNA (reconstitute with 100 ul of water).

Reconstitution Method:

1. Centrifuge at 5,000xg for 5min.
2. Carefully open the tube and add 100ul of sterile water to dissolve the DNA.
3. Close the tube and incubate for 10 minutes at room temperature.
4. Briefly vortex the tube and then do a quick spin (less than 5000xg) to concentrate the liquid at the bottom.
5. Store the suspended plasmid at -20°C. The DNA is stable for at least one year from date of shipping when stored at -20°C.

RefSeq: [NM_001198617.1](#), [NP_001185546.1](#)

RefSeq ORF: 1968 bp

Locus ID: 9053

UniProt ID: [Q14244](#)

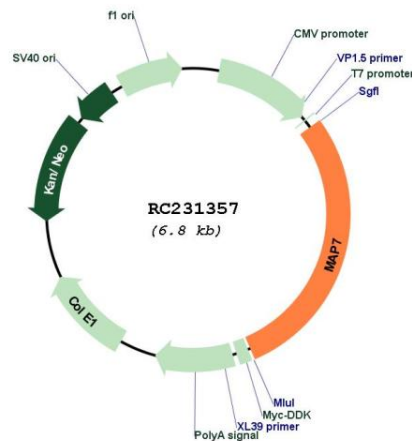
Cytogenetics: 6q23.3

Protein Families: Druggable Genome

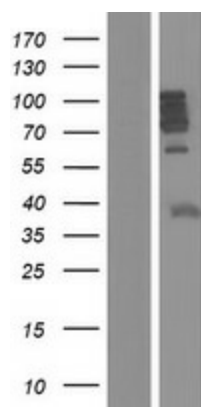
MW: 72.9 kDa

Gene Summary: The product of this gene is a microtubule-associated protein that is predominantly expressed in cells of epithelial origin. Microtubule-associated proteins are thought to be involved in microtubule dynamics, which is essential for cell polarization and differentiation. This protein has been shown to be able to stabilize microtubules, and may serve to modulate microtubule functions. Studies of the related mouse protein also suggested an essential role in microtubule function required for spermatogenesis. Multiple alternatively spliced transcript variants encoding different isoforms have been found for this gene. [provided by RefSeq, Oct 2010]

Product images:



Circular map for RC231357



Western blot validation of overexpression lysate (Cat# [LY434356]) using anti-DDK antibody (Cat# [TA50011-100]). Left: Cell lysates from untransfected HEK293T cells; Right: Cell lysates from HEK293T cells transfected with RC231357 using transfection reagent MegaTran 2.0 (Cat# [TT210002]).