

Product datasheet for **RC231355**

NT5C1B (NT5C1B-RDH14) (NM_001199103) Human Tagged ORF Clone

Product data:

Product Type:	Expression Plasmids
Product Name:	NT5C1B (NT5C1B-RDH14) (NM_001199103) Human Tagged ORF Clone
Tag:	Myc-DDK
Symbol:	NT5C1B
Synonyms:	AIRP; cN-IB; cN1B; NT5C1B
Mammalian Cell Selection:	Neomycin
Vector:	pCMV6-Entry (PS100001)
E. coli Selection:	Kanamycin (25 ug/mL)



[View online »](#)

ORF Nucleotide
Sequence:

>RC231355 representing NM_001199103
Red=Cloning site Blue=ORF Green=Tags(s)

TTTTGTAATACGACTCACTATAGGGCGGCCGGAATTCGTCGACTGGATCCGGTACCGAGGAGATCTGCC
GCCGCGATCGCC

ATGAGTCAAACATCTCTCAAACAGAAAAAAGATGAGCCTGGAATGAGGTCCTCAAAGAGAGTCTAGAAG
CAGAAAAAAGAAAGGAATCTGACAAAACAGGAGTTCGTCTGAGCAATCAGGGATCACAAGAATCATCACT
GCGGAAGACAGACTCTCGAGGGTACCTTGTGCGCAGTCAATGGTCTAGAATATCCCGGAGCCCATCCACC
AAGGCTCCATCCATAGATGAGCCTAGAAGCAGGAACACCAGTGCTAAGGTAGAGCTCCCCAGCAGCTCCA
CGAGCTCCCGGACTCCATCCACCTCCCCAAGCCTGCATGACTCCTCACCGCCGCCGTGTCCGGGCAGCC
CTCGCTCCAGCCACCCGCGTCGCCCCAGCTGCCCGGTGCTGGACTCGCGGCCTCCACGCCCCCAGAG
CCCATCTGGCTCCCGGCGCAGCACAAAATGCAAGAGAATCCGGAGGCCTGGGCCAAGGCATCGTGC
GGGAAATCCGCCAGACCCGGGACTCGCAGCCGCTGGAATATTGCGCACGTCCCCACCGAGTGGAAAGTC
CTCCAGCCAGCGCAGGGGATCTACCCGCTCCACCCAGCTGGACCGCAACTCTCTGTCCGAGCAGCAG
CAGCAGCAGCGGGAGGACGAGGACGACTACGAGGCTGCCTACTGGGCATCCATGAGGTGTTCTACGAGA
AGAACCCGAGCTGCTCGGCCCTGGCCGCCAAACCCAAAGAAGCCATCACCATTGCTCTCTATCCTG
CGCGCTTTCAACATGGTGGACGGCAGGAAAATCTACGAGCAAGAGGGTCTGGAAAAGTACATGGAGTAT
CAGCTACCAATGAGAAGCTCATCTGACCCCGGGCCCGCGTTCGCTTCAAGGCACTACAGTATG
TCAATGCTAGACTCCGTGATCTATCTGATGAACAGGACTATTTGATATTGACTGATGACTAATAA
CCATGCCAAAGTGGGAGTGGCGTTATAAACAGCGTCAATCACTACGGCTTACTGATTGACCGCTTCTGT
CTGACCGGGGAAAAGACCCATTGGCTATTTGAAGGCATATCTACCAACTGTATATTGCTGCAGATT
CTGAAAAAGTGAAGAGCAATACAAGAAGGATTGCCTCTGCGACAATGTTTGATGGAGCCAAAGACAT
GGCTTACTGTGACACTCAGCTCCGTGTAGCCTTTGATGGGGATGCTGTCTCTTCTCTGATGAGTCTGAA
CATTTTACCAAGGAGCATGGGCTCGACAAATTCTCCAGTATGATACATTATGTGAAAGTAAAGCCTCTTG
CTCAGGAAGAGCCTAGGCTGGATGTCTTGATCAATAACGCAGGGATCTTCCAGTGCCTTACATGAAGAC
TGAAGATGGGTTTGAGATGCAGTTCGGAGTGAACCATCTGGGCACCTTCTACTACCAATCTTCTCCTT
GGACTCTCAAAGTTCAGCTCCAGCAGGATTGTGGTAGTTTCTTCAAACCTTATAAATACGGAGACA
TCAATTTTATGACTTGAACAGTGAACAAAGCTATAATAAAAGCTTTTGTATAGCCGGAGCAAAGTGGC
TAACATCTTTTTACCAGGAACTAGCCCGCCGCTTAGAAGGCACAAATGTCACCGTCAATGTGTTGCAT
CCTGGTATTGTACGGACAAATCTGGGGAGGCACATACACATTCCACTGTTGGTCAAACCACTCTTCAATT
TGGTGTGATGGGCTTTTTTCAAACCTCCAGTAGAAGGTGCCAGACTTCCATTTATTTGGCTCTTACC
TGAGGTAGAAGGAGTGTGAGGAAGATACTTTGGGATTGTAAAGAGGAAGAACTGTTGCCAAAGCTATG
GATGAATCTGTTGCAAGAAAACCTCTGGGATATCAGTGAAGTATGGTTGGCCTGCTAAAA

ACGCGTACGCGGCCGCTCGAGCAGAAACTCATCTCAGAAGAGGATCTGGCAGCAAATGATATCCTGGATT
ACAAGGATGACGACGATAAGGTTTAA

Protein Sequence: >RC231355 representing NM_001199103
Red=Cloning site Green=Tags(s)

```
MSQTSLKQKKNPEGMRSKESLEAEKRKESDKTGVRLSNQGSQESSLRKTDSRGLVRSQWSRISRSPST
KAPSIDEPSSRNTSAKVELPSSSTSSRTPSTSPSLHDSPPPLSGQPSLQPPASPQLPRSLDSRPPTPE
PDPGSRRTKMQENPEAWAQGIVREIRQTRDSQPLEYSRTSPTTEWKSSSQRRGIYPASTQLDRNSLSEQQ
QQQREDEDDYEAAAYWASMRSFYEKNPSCSRPWPPKPKNAITIALSSCALFNMVDGRKIYEQEGLEKMEY
QLTNENVILTPGPAFRFVKALQYVNARLRDLYPDEQDLFDIVLMTNHAQVGVRLINSVNHYGLLIDRFC
LTGGKDPIGYLKAYLTNLYIAADSEKVVQEAIQEGIASATMFDGAKDMAYCDTQLRVAFDGDVLFVSESE
HFTKEHGLDKFFQYDTLCEKPLAQEEPRLDVLINNAGIFQCPYMKTEDGFEMQFVNHVGHFLLNLLL
GLLKSSAPSRIVVSSKLYKYGDFINDDLNSEQSYNKSFYCYSRSLANILFTRELARRLEGNTVTVNVLH
PGIVRTNLGRHIHPLLVKPLFNLVSWAFFKTPVEGAQTSIYLASSPEVEGVSGRYFGDCKEELLPKAM
DESVARKLWDISEVMVGLLK
```

TRTRPLEQKLISEEDLAANDILDYKDDDDKV

Chromatograms: https://cdn.origene.com/chromatograms/mk8071_d11.zip

Restriction Sites: SgfI-MluI

Cloning Scheme:



ACCN: NM_001199103

ORF Size: 1950 bp

OTI Disclaimer: The molecular sequence of this clone aligns with the gene accession number as a point of reference only. However, individual transcript sequences of the same gene can differ through naturally occurring variations (e.g. polymorphisms), each with its own valid existence. This clone is substantially in agreement with the reference, but a complete review of all prevailing variants is recommended prior to use. [More info](#)

OTI Annotation: This clone was engineered to express the complete ORF with an expression tag. Expression varies depending on the nature of the gene.

Components: The ORF clone is ion-exchange column purified and shipped in a 2D barcoded Matrix tube containing 10ug of transfection-ready, dried plasmid DNA (reconstitute with 100 ul of water).

Reconstitution Method:

1. Centrifuge at 5,000xg for 5min.
2. Carefully open the tube and add 100ul of sterile water to dissolve the DNA.
3. Close the tube and incubate for 10 minutes at room temperature.
4. Briefly vortex the tube and then do a quick spin (less than 5000xg) to concentrate the liquid at the bottom.
5. Store the suspended plasmid at -20°C. The DNA is stable for at least one year from date of shipping when stored at -20°C.

RefSeq: [NM_001199103.1](#), [NP_001186032.1](#)

RefSeq ORF: 1953 bp

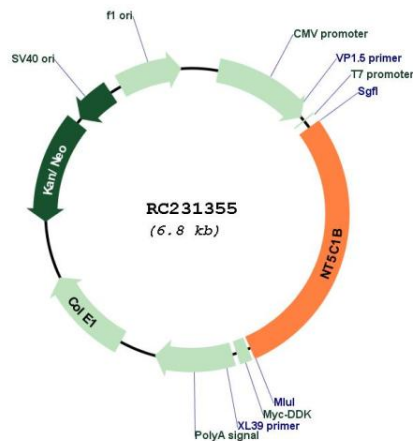
Locus ID: 100526794

Cytogenetics: 2p24.2

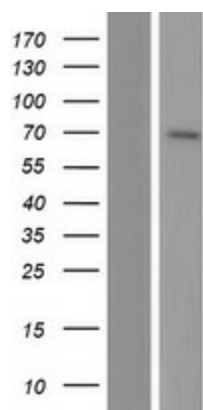
MW: 73.7 kDa

Gene Summary: This locus represents naturally occurring read-through transcription between the neighboring NT5C1B (5'-nucleotidase, cytosolic 1B) and RDH14 (retinol dehydrogenase 14) genes on chromosome 2. Alternative splicing results in multiple transcript variants, one of which encodes a fusion protein that shares sequence identity with the products of each individual gene. [provided by RefSeq, Nov 2010]

Product images:



Circular map for RC231355



Western blot validation of overexpression lysate (Cat# [LY434354]) using anti-DDK antibody (Cat# [TA50011-100]). Left: Cell lysates from untransfected HEK293T cells; Right: Cell lysates from HEK293T cells transfected with RC231355 using transfection reagent MegaTran 2.0 (Cat# [TT210002]).