

Product datasheet for **RC231348**

PODN (NM_001199080) Human Tagged ORF Clone

Product data:

Product Type:	Expression Plasmids
Product Name:	PODN (NM_001199080) Human Tagged ORF Clone
Tag:	Myc-DDK
Symbol:	PODN
Synonyms:	PCAN; SLRR5A
Mammalian Cell Selection:	Neomycin
Vector:	pCMV6-Entry (PS100001)
E. coli Selection:	Kanamycin (25 ug/mL)



[View online »](#)

ORF Nucleotide
Sequence:

>RC231348 representing NM_001199080
Red=Cloning site Blue=ORF Green=Tags(s)

TTTTGTAATACGACTCACTATAGGGCGGCCGGGAATTCGTCGACTGGATCCGGTACCGAGGAGATCTGCC
GCC**CGGATCGCC**

ATGGAAGCGGAGGAGGCAGAACAGCCTGCCTGGTTCCGTCAGCCCTGGCGCCAGGCGCATCTGACTCGG
CACCCCTGCAGGCACCATGGCCAGAGCCGGTGTGCTGCTCCTGCTGCTGCTGCCGCCACAGCTGCA
CCTGGGACCTGTGCTTGCCTGAGGGCCCCAGGATTTGGCCGAAGTGGCGCCACAGCCTGAGCCCCGAA
GAGAACGAATTTGCGGAGGAGGACCGGTGCTGGTACTGAGCCCTGAGGAGCCGGGCTGGCCAGCCG
CGGTCAGCTGCCCCGAGACTGTGCTGTTCCAGGAGGGCGTGTGGACTGTGGCGGTATTGACCTGCG
TGAGTTCCCGGGGACCTGCCTGAGCACACCAACCACCTATCTCTGCAGAAACAACAGCTGGAAAAGATC
TACCCTGAGGAGCTCTCCCGCTGCACCGGCTGGAGACGCTGAACCTGCAAAAACAACCGCTGACTTCCC
GAGGGCTCCCAGAGAAGGCGTTTGGAGCATCTGACCAACCTCAATTACCTGTACTTGGCCAATAACAAGT
GACCTTGGCACCCCGCTTCTGCAACGCCCTGATCAGTGTGGACTTTGCTGCCAACTATCTACCAAG
ATCTATGGGCTCACCTTTGGCCAGAAGCCAAACTTGGAGTCTGTGTACCTGCACAACAACAGCTGGCAG
ACGCCGGGCTGCCGGACAACATGTTCAACGGCTCCAGCAACGTCGAGGTCTCATCTGTCCAGCAACTT
CCTGCGCCACGTGCCAAGCACCTGCCGCTGCCTGTACAAGCTGCACCTCAAGAAACAACAGCTGGAG
AAGATCCCCCGGGGCTTTCAGCGAGCTGAGCAGCCTGCGCGAGCTATACCTGCAGAAACAACACTCTGA
CTGACGAGGGCTGGACAACGAGACCTTCTGGAAGCTCTCCAGCCTGGAGTACCTGGATCTGTCCAGCAA
CAACCTGTCTCGGTCCCAGCTGGGCTGCCCGCAGCCTGGTGTGCTGCACTTGGAGAAGAAGCCATC
CGGAGCGTGGACGGAATGTGCTGACCCCATCCGCAGCCTGGAGTACCTGCTGTCACAGCAACCAGC
TGCGGGAGCAGGGCATCCACCCACTGGCCTTCCAGGGCCTCAAGCGGTTGCACACGGTGCACCTGTACAA
CAACGCGCTGGAGCGCTGCCAGTGGCCTGCCTCGCCGCGTGGCACCCTCATGATCCTGCACAACCAG
ATCACAGGCAATTGGCCGGAAGACTTTGCCACCACCTACTTCTGGAGGAGCTCAACCTCAGCTACAACC
GCATCACAGCCCGCAGGTGCACCGCAGCCTTCCGCAAGCTGCGCCTGCTGCGCTCGCTGGACCTGTC
GGGCAACCGGCTGCACACGCTGCCACCTGGGCTGCCTCGAAATGTCCATGTGCTGAAGGTCAAGCGCAAT
GAGCTGGCTGCCTTGGCACGAGGGGCGCTGGTGGGATGGCTCAGCTGCGTGAGCTGTACCTCACAGCA
ACCGACTGCGCAGCCGAGCCCTGGGCCCCCGTGCCTGGTGGACCTCGCCATCTGCAGCTGCTGGACAT
CGCCGGGAATCAGCTCACAGAGATCCCCGAGGGGCTCCCCGAGTCACTTGAAGTACCTGTACCTGCAGAAC
ACAAGATTAGTGCAGTCCCGCAATGCCTTCCACTCCAGCCCAACCTCAAGGGGATCTTCTCAGGT
TTAAACAAGCTGGCTGTGGGCTCCGTGGTGGACAGTGCCTTCCGGAGGCTGAAGCACCTGCAGGTCTTGG
CATTGAAGGCACTTAGAGTTTGGTGACATTTCAAGGACCGTGGCCGCTTGGGAAGGAAAAGGAGGAG
GAGGAAGAGGAGGAGGAGGAAGAGGAAACAAGA

ACGCGTACGCGGCCGCTCGAGCAGAACTCATCTCAGAAGAGGATCTGGCAGCAATGATATCCTGGATT
ACAAGGATGACGACGATAAGGTTTAA

Protein Sequence: >RC231348 representing NM_001199080
Red=Cloning site Green=Tags(s)

```
MEGEEAEQPAWFRQPWRPGASDSAPPAGTMAQSRVLLLLLLLPPQLHLPVLA VRAPGFGRSGGHLSPE
ENEFAEEEEPVLSPEEPGPAAVSCPRDCACSQEGVDCGGIDLREFPGDLPEHTNHL SLQNNQLEKI
YPEEL SRLHRLETLNLQNNRLTSRGLPEKAFEHLTNLNYLYLANNKLTAPRFLPNALISVDF AANYLTK
IYGLTFGQKPNLRSVYLHNNKLADAGLPDNMFGSSNVEVLI LSSNFLRHVPKHLPPALYKLHLKNNKLE
KIPPGAFSELSSLRELYLQNNYLTDEGLDNETFWKLSSELYLDLSSNNLSRVPAGLPRSLVLLHLEKNAI
RSVDANVLTPIRSLEYLLLHSNQLREQIHLAFQGLKRLHTVHLYNNALERVPSGLPRRVRTLMLHNQ
ITGIGREDFATTYFLEELNLSYNRITSPQVHRDAFRKLRLLRSLDL SGNRLHTLPPGLPRNVHVLKVKRN
ELAALARGALVGMAQLRELYLTSNRLRSRSLGPRAWDLAHLQLLDIAGNQLTEIPEGLPESLEYLYLQN
NKISAVPANAFDSTPNLKGIFLRFNKLAVGSSVDSAFRRLKHLQVLDIEGNLEFGDISKDRGRLGKEKEE
EEEEEEEEETR
```

TRTRPLEQKLISEEDLAANDILDYKDDDDKV

Chromatograms: https://cdn.origene.com/chromatograms/mk8071_b06.zip

Restriction Sites: SgfI-MluI

Cloning Scheme:



ACCN: NM_001199080

ORF Size: 1926 bp

OTI Disclaimer: The molecular sequence of this clone aligns with the gene accession number as a point of reference only. However, individual transcript sequences of the same gene can differ through naturally occurring variations (e.g. polymorphisms), each with its own valid existence. This clone is substantially in agreement with the reference, but a complete review of all prevailing variants is recommended prior to use. [More info](#)

OTI Annotation: This clone was engineered to express the complete ORF with an expression tag. Expression varies depending on the nature of the gene.

Components: The ORF clone is ion-exchange column purified and shipped in a 2D barcoded Matrix tube containing 10ug of transfection-ready, dried plasmid DNA (reconstitute with 100 ul of water).

Reconstitution Method:

1. Centrifuge at 5,000xg for 5min.
2. Carefully open the tube and add 100ul of sterile water to dissolve the DNA.
3. Close the tube and incubate for 10 minutes at room temperature.
4. Briefly vortex the tube and then do a quick spin (less than 5000xg) to concentrate the liquid at the bottom.
5. Store the suspended plasmid at -20°C. The DNA is stable for at least one year from date of shipping when stored at -20°C.

RefSeq: [NM_001199080.3](#)

RefSeq ORF: 1842 bp

Locus ID: 127435

UniProt ID: [Q7Z5L7](#)

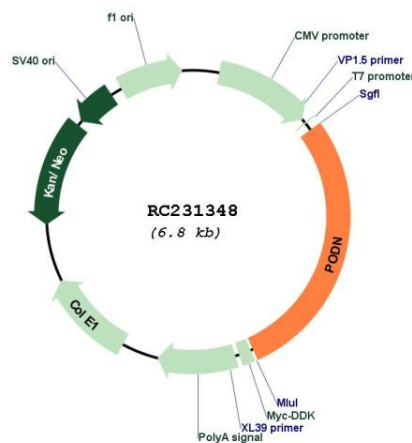
Cytogenetics: 1p32.3

Protein Families: Secreted Protein

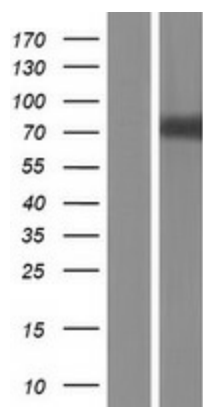
MW: 72.6 kDa

Gene Summary: The protein encoded by this gene is a member of the small leucine-rich repeat protein family and contains an amino terminal CX3CX7C cysteine-rich cluster followed by a leucine-rich repeat domain. Studies suggest that this protein could function to inhibit smooth muscle cell proliferation and migration following arterial injury. [provided by RefSeq, Jul 2016]

Product images:



Circular map for RC231348



Western blot validation of overexpression lysate (Cat# [LY434347]) using anti-DDK antibody (Cat# [TA50011-100]). Left: Cell lysates from untransfected HEK293T cells; Right: Cell lysates from HEK293T cells transfected with RC231348 using transfection reagent MegaTran 2.0 (Cat# [TT210002]).