

## Product datasheet for **RC231338**

### CCDC17 (NM\_001190182) Human Tagged ORF Clone

#### Product data:

Product Type:	Expression Plasmids
Product Name:	CCDC17 (NM_001190182) Human Tagged ORF Clone
Tag:	Myc-DDK
Symbol:	CCDC17
Mammalian Cell Selection:	Neomycin
Vector:	pCMV6-Entry (PS100001)
E. coli Selection:	Kanamycin (25 ug/mL)



[View online »](#)

**ORF Nucleotide Sequence:**

>RC231338 representing NM\_001190182  
 Red=Cloning site Blue=ORF Green=Tags(s)

TTTTGTAATACGACTCACTATAGGGCGGCCGGGAATTCGTCGACTGGATCCGGTACCGAGGAGATCTGCC  
 GCC**CGGATCGCC**

ATGGACTCCCACTCTGGGGAGCCTGCGCTCCTGCCTGTGGACCTGTGACATGGTTTTCCGCTCCTCAG  
 CTCTGTTAGCCACCCATACTCAGCGCTTCTGCATTGGCCACCCGACCCAAGAGATGACATTTGGAGCACA  
 GGCATCAGTTGCCACTGAACCCAGCGGCCGCGTTGTGCCACAAGAACCAGGGCGTGCCACAAGAA  
 CCCCAGGGCCTCCAGACCAGCAGGCCAGTAGATCTGCTCTAAAGAGTTAACAGAGGAGAAATGCGGC  
 CCTGGATAACAGAGGTCCCAGGGTGTTCGCGGGGCCCTGGACACGTTCCGAGGCGCGCCCTCAGAGTCC  
 CATGTCCGAGGCGGTGGGAAGCCCCAGCGAGCGGCTGCGGGCGCTGTTCCAGACTCGCGCAGGCGCGTG  
 GCGGAGATGGAAGCGCAGAGCCGGGCCCTGCAGCTACGCGGCAGGAACAGCCGACGCTCCAAGTTG  
 TGGCCTGTACGCGGGCGGGATGTCCCCTCTTCGGCTGGAGCAGGAGATTGAGAATAACAAGTGA  
 GGCCGGGAGGACGCGGGAGCTCTAGAGGTGTTGGGGCCCGCATTCCAGAGCTGCAGGCGGAGCCAGGG  
 AACCCGCTGAGCTCCCGCGAGAGGCAGAACTTTATTCTCCAGTGCAAAAAGGCCAACCCGGAACTCTGG  
 CTGCCAAATCCGGGCGCTGCGGGAGGCCACATTCGAGACGGGGCCGGGACCCCGCGCTGCTGGGCCA  
 GATATGGCAGTTGCAGGTGGAGCGTCTGCACTGGAGCTGCAGCGGTCCGAGACCCGAGAGGAAGGGCA  
 GGTGCCACCTCAGGGGAGCTTCCAGTAGTGGAGGCTGAAAACCGCGCTTGGAGGCAGAAATCTTGGCCT  
 TGCAAATGCAGAGGGGTGCGGCACCCCTTGGGGCCCCAGGATCTGCGACTCCTGGGGGATGCCAGCCTACA  
 ACCGAAGGGGAGGAGATCCCCACTCCTCCGCCACCGGTGGCACCACCGTCCACCACTTCCAGGC  
 TTCTCGGAGCCACAGCTTCTGGAACAATGACCAGAACTGGCCTGGACTCACACTTCTCTGCCCA  
 CATCGGACATGCTGGGCCCTGCACCTATGATCCTGGGCTGGCCTGGTCAATTTCTATGATTTCTCGG  
 GGGCCTTGAGGCTTCTGGATTGGGTGCAACTAAGACTGGCTTGGCACGCGATGGACGGGATACAGGA  
 AGGACCACAGCGTTGCCCCAGCCCTTTCCTGCCCCACCTCCTGCTCCCGGGCCATGGCAACTGTG  
 CCATCCTTGCCAGCAGGCAGCCTGTGCCAGACTACCACCCTCATCATCAGTATCTTTGGTCTGTGAGCT  
 GCAGGTCTGGCAGGGGTAGCATGGGCTAGGGCACCACAGCCAAAGGCTTGGGTCTCACTTGGACTATTT  
 GACCAAGATCAGCGGTGCTAAGTGGCCGCTGGCGCTCCCACTTCGGGCCCTTCTCTGGACCCAGCC  
 TTAGCCTTGGGCAGCTGAATGGGATTCTCAGGCAGTCAAGCTGAGCTTTTCTGCGGCTGGTGAATGC  
 AAGAGATGCAGCTGTACAGACACTGGCAGAGATCAATCCAGCAAGTGTCCATGAGTACCAGTACCCACT  
 CCGGTGTCCAGCACATCTCACTGGAAGCCAGCTTCTCACCCCGCAGTTGGCTTGTGATCCCCAC  
 CTGCTACAGAAGAGCCCTCAGTGGAGTCAAGGATAGAGATGAGGTTTGGGCCCTCACACAGTCTGA  
 CTTGCCCCAGTGAGTTTC

**ACGCGT**ACGCGGCCGCTCGAGCAGAACTCATCTCAGAAGAGGATCTGGCAGCAAATGATATCCTGGATT  
 ACAAGGATGACGACGATAAGGTTTAA

**Protein Sequence:**

>RC231338 representing NM\_001190182  
 Red=Cloning site Green=Tags(s)

MDSHSGEPALLPCGTCDMVFRSSALLATHTRFCIGHPTQEMTFGAQASVATEPQRAAVVPQEHQGVPE  
 PQGLPDQQASRSALKRLTEEMRPWITEVPRVFAGPWTRSEARPOSPMSEAVGSPSERLRALFRTRARRV  
 AEMEAQSRALQLRGEELSRRLQVVACTRGGMSRLFGLEQEIRELQAEAGRTRGALEVLGARIQELQAEPE  
 NPLSSRREAELYSVPQKANPGTLAAEIRALREAYIRDGGRDPGVLGQIWQLQVEASALELQRSQTRRGRA  
 GATSGELPVVEAENRRLEAEILALQMQRGRAPLGPQDLRLLDASLQPKGRRDPPPLPPPAPPLPPLPG  
 FSEPQLPGTMTRNLGLDSHFLLPTSDMLGPAPYDPGAGLVIFYDFLRGLEASWIWVQLRTGLARDGRDTG  
 RTTALPPALCLPPPAPGPMGNCAILASRQVPRLPPSSSVSLVCELQVWQGLAWARAPQPKAWVSLGLF  
 DQDQRVLSGRWRPLRALPLDPSLSLQNLNIPQAGQAEFLRLVNARDAAVQTLAEINPASVHEVYQYPP  
 PVSSTSSLEASFLTPAVGFADPPPRTTEPLSGVKDRDEGLGPHHSSDLPPVSF

**TR**TRPLEQKLISEEDLAANDILDYKDDDDKV

**Chromatograms:**

[https://cdn.origene.com/chromatograms/mk8069\\_g05.zip](https://cdn.origene.com/chromatograms/mk8069_g05.zip)

Restriction Sites: SgfI-MluI

Cloning Scheme:



ACCN: NM\_001190182

ORF Size: 1839 bp

OTI Disclaimer: The molecular sequence of this clone aligns with the gene accession number as a point of reference only. However, individual transcript sequences of the same gene can differ through naturally occurring variations (e.g. polymorphisms), each with its own valid existence. This clone is substantially in agreement with the reference, but a complete review of all prevailing variants is recommended prior to use. [More info](#)

OTI Annotation: This clone was engineered to express the complete ORF with an expression tag. Expression varies depending on the nature of the gene.

Components: The ORF clone is ion-exchange column purified and shipped in a 2D barcoded Matrix tube containing 10ug of transfection-ready, dried plasmid DNA (reconstitute with 100 ul of water).

Reconstitution Method:

1. Centrifuge at 5,000xg for 5min.
2. Carefully open the tube and add 100ul of sterile water to dissolve the DNA.
3. Close the tube and incubate for 10 minutes at room temperature.
4. Briefly vortex the tube and then do a quick spin (less than 5000xg) to concentrate the liquid at the bottom.
5. Store the suspended plasmid at -20°C. The DNA is stable for at least one year from date of shipping when stored at -20°C.

RefSeq: [NM\\_001190182.2](#)

RefSeq ORF: 1842 bp

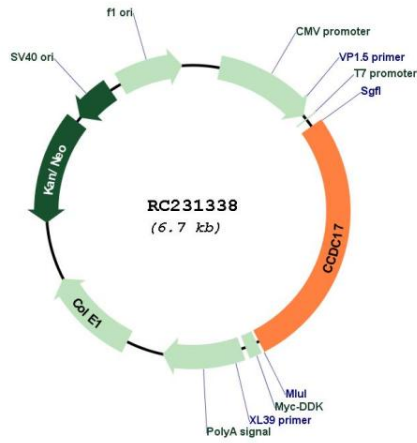
Locus ID: 149483

UniProt ID: [Q96LX7](#)

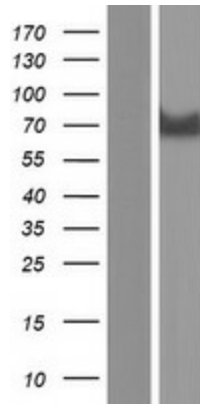
Cytogenetics: 1p34.1

MW: 67 kDa

**Product images:**



Circular map for RC231338



Western blot validation of overexpression lysate (Cat# [LY434337]) using anti-DDK antibody (Cat# [TA50011-100]). Left: Cell lysates from untransfected HEK293T cells; Right: Cell lysates from HEK293T cells transfected with RC231338 using transfection reagent MegaTran 2.0 (Cat# [TT210002]).