

## Product datasheet for **RC231332**

### NT5C1B (NT5C1B-RDH14) (NM\_001199104) Human Tagged ORF Clone

#### Product data:

Product Type:	Expression Plasmids
Product Name:	NT5C1B (NT5C1B-RDH14) (NM_001199104) Human Tagged ORF Clone
Tag:	Myc-DDK
Symbol:	NT5C1B
Synonyms:	AIRP; cN-IB; cN1B; NT5C1B
Mammalian Cell Selection:	Neomycin
Vector:	pCMV6-Entry (PS100001)
E. coli Selection:	Kanamycin (25 ug/mL)



[View online »](#)

**ORF Nucleotide Sequence:**

>RC231332 representing NM\_001199104  
 Red=Cloning site Blue=ORF Green=Tags(s)

TTTTGTAATACGACTCACTATAGGGCGGCCGGAATTCGTCGACTGGATCCGGTACCGAGGAGATCTGCC  
 GCC**CGGATCGCC**

ATGAGTCAAACATCTCTCAAACAGAAAAAAGATGAGCCTGGAATGAGGTCCTCAAAGAGAGTCTAGAAG  
 CAGAAAAAGAAAAGGAATCTGACAAAACAGGAGTTCGTCTGAGCAATCAGATGAGGCGTGCAGTCAATCC  
 GAATCACTCGCTGAGATGTTGCCCTTCCAGGGTCACTCGTCGTGTAGACGCTGCCTTTGTGCAGCTGAG  
 GGAACAGCCCTTGGCCCTGCCACACAATCGTATTTATATTACATGTGCCTGTTGTGGGAGCAGGGCC  
 AGCAGATCACCATGATGAGGGGATCACAAGAATCATCACTGCGGAAGACAGACTCTCGAGGGTACCTTGT  
 GCGCAGTCAATGGTCTAGAATATCCCGGAGCCATCCACCAAGGCTCCATCCATAGATGAGCCTAGAAGC  
 AGGAACACCAGTCTAAGCTCCCAGCAGCTCCACGAGCTCCGGACTCCATCCACCTCCCCAAGCCTGC  
 ATGACTCCTCACCGCCGCGCTGTCCGGCAGCCCTCGTCCAGCCACCCGCGTCCGCCAGCTGCCCCG  
 GTCGCTGGACTCGCGCCCTCCCACGCCCCAGAGCCCGATCCTGGCTCCCGGCGCAGCACAAAATGCAA  
 GAGAATCCGGAGGCTGGGCCAAAGGCATCGTGCGGGAAATCCGCCAGACCCGGGACTCGCAGCCGCTGG  
 AATATTCGCGCACGTCCCCACCGAGTGGAACTCTCCAGCCAGCGCAGGGGGATCTACCCCGCCTCCAC  
 CCAGCTGGACCGCAACTCTGTCCGAGCAGCAGCAGCAGCAGCGGGAGGACGAGGACGACTACGAGGCT  
 GCCTACTGGGCATCCATGAGGTCGTTCTACGAGAAGAACCCGAGCTGCTCGCGCCCTGGCCGCCAAAC  
 CCAAGAACGCCATCACCATTGCTCTCATCTGCGCGCTCTTCAACATGGTGGACGGCAGGAAAATCTA  
 CGAGCAAGAGGGTCTGAAAAAGTACATGGAGTATCAGCTACCAATGAGAACGTCATCTGACCCCGGGC  
 CCGCGCTCCGCTTCGTCAAGGCACTACAGTATGTCAATGTAGACTCCGTGATCTATATCTGATGAAC  
 AGGACTTATTTGATATTGTACTGATGACTAATAACCATGCCAAGTGGGAGTGGCGCTTATAAACCGCT  
 CAATCACTACGGCTTACTGATTGACCGCTTCTGTCTGACCGGGGAAAAGACCCCATTTGGCTATTTGAAG  
 GCATATCTTACCAACTTGTATATTGCTGCAGATTCTGAAAAAGTCAAGAGGCAATACAAGAAGGTATTG  
 CCTCTGCGACAATGTTTGTGAGGCAAAAGACATGGCTTACTGTGACACTCAGCTCCGTGTAGCCTTTGA  
 TGGGGATGCTGCTCTTCTCTGATGAGTCTGAACATTTTACCAAGGAGCATGGGCTCGACAAAATCTTC  
 CAGTATGATACATTATGTGAAAGTAAGCCTCTTGCTCAGGGTCCCTAAAAGGCTTTCTGGAAGATTTAG  
 GCAGACTGCAAAAAGTCTATGCCAAAATGAACGGTACTTTGTCCTATCAGGACCTACCTGGTTAC  
 AGCTAGGAGTGCAGCCAGTTCAGGCGCCGCTGTGCTGAAGACCCTTCGACGCTGGGTCTAGAGATAGAC  
 GAAGCTCTTTTCTTGTGGAGCCCCAAAAGTCCCATCTTGGTGAAGATCCGGCCCCACATCTTCTTTG  
 ATGACCACATGTTCCACATTGAAGGGGCACAGAGGAAGAGCCTAGGCTGGATGTCT

**ACGCGT**ACGCGGCCGCTCGAGCAGAAACTCATCTCAGAAGAGGATCTGGCAGCAAATGATATCCTGGATT  
 ACAAGGATGACGACGATAAGGTTTAA

**Protein Sequence:**

>RC231332 representing NM\_001199104  
 Red=Cloning site Green=Tags(s)

MSQTSLKQKNEPGRSSKESLEAEKRKESDKTGVRLSNQMRRVNPNSLRCCPFQGHSSCRRCLCAAE  
 GTALGPCHTIRIYIHMCLLWEQQQITMMRGSQESSLRKTDSEYLVRSQWSRISRSPSTKAPSIDEP  
 RNTSAKLPSSSTSSRTPSTSPSLHDSSPPPLSGQPSLQPPASPQLPRSLDSRPPTPEPDPGSRSTKMQ  
 ENPEAWAQGIVREIRQTRDSQPLEYSRTSPTWKSQRRGIYPASTQLDRNSLSEQQQQREDEDDYEA  
 AYWASMRSFYEKNPSCSRPWPPKPKNAITIALSSCALFNMVDGRKIYEQEGLEKYMAYQLTENVILTPG  
 PAFRFVKALQYVNARLRLYPDEQDLFDIVLMTNNHAQVGVRLINSVNHVGLLIDRFCLTGGKDP  
 IGYLKAYLTNLYIAADSEKVQEAIQEGIASATMFDGAKDMAYCDTQLRVAFDGDVLFSDSEHF  
 TKEHGLDKFFQYDTLCEKPLAQGPLKGFLEDLGRLLQKQFYAKNERLLCPVRTYLVARSAAASSGARV  
 LKTLRRWGLEIDEALFLAGAPKSPILVKIRPHIFFDDHMFHIEGAQRKSLGWMS

**TR**TRPLEQKLISEEDLAANDILDYKDDDDKV

**Chromatograms:**

[https://cdn.origene.com/chromatograms/ja1398\\_d11.zip](https://cdn.origene.com/chromatograms/ja1398_d11.zip)

Restriction Sites: SgfI-MluI

Cloning Scheme:



ACCN: NM\_001199104

ORF Size: 1806 bp

OTI Disclaimer: The molecular sequence of this clone aligns with the gene accession number as a point of reference only. However, individual transcript sequences of the same gene can differ through naturally occurring variations (e.g. polymorphisms), each with its own valid existence. This clone is substantially in agreement with the reference, but a complete review of all prevailing variants is recommended prior to use. [More info](#)

OTI Annotation: This clone was engineered to express the complete ORF with an expression tag. Expression varies depending on the nature of the gene.

Components: The ORF clone is ion-exchange column purified and shipped in a 2D barcoded Matrix tube containing 10ug of transfection-ready, dried plasmid DNA (reconstitute with 100 ul of water).

- Reconstitution Method:
1. Centrifuge at 5,000xg for 5min.
  2. Carefully open the tube and add 100ul of sterile water to dissolve the DNA.
  3. Close the tube and incubate for 10 minutes at room temperature.
  4. Briefly vortex the tube and then do a quick spin (less than 5000xg) to concentrate the liquid at the bottom.
  5. Store the suspended plasmid at -20°C. The DNA is stable for at least one year from date of shipping when stored at -20°C.

RefSeq: [NM\\_001199104.1](#), [NP\\_001186033.1](#)

RefSeq ORF: 1809 bp

Locus ID: 100526794

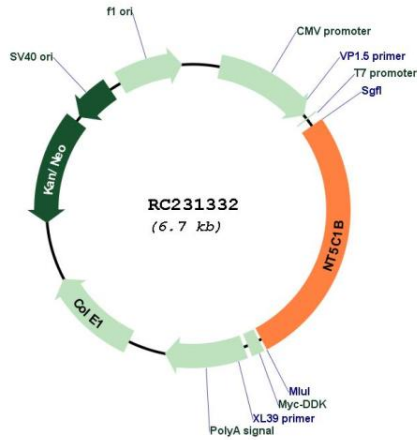
UniProt ID: [Q96P26](#)

**Cytogenetics:** 2p24.2

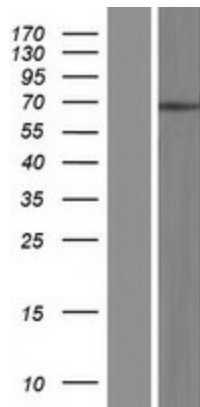
**MW:** 68.5 kDa

**Gene Summary:** This locus represents naturally occurring read-through transcription between the neighboring NT5C1B (5'-nucleotidase, cytosolic 1B) and RDH14 (retinol dehydrogenase 14) genes on chromosome 2. Alternative splicing results in multiple transcript variants, one of which encodes a fusion protein that shares sequence identity with the products of each individual gene. [provided by RefSeq, Nov 2010]

**Product images:**



Circular map for RC231332



Western blot validation of overexpression lysate (Cat# [LY434331]) using anti-DDK antibody (Cat# [TA50011-100]). Left: Cell lysates from untransfected HEK293T cells; Right: Cell lysates from HEK293T cells transfected with RC231332 using transfection reagent MegaTran 2.0 (Cat# [TT210002]).