

Product datasheet for **RC231320**

CNOT4 (NM_001190848) Human Tagged ORF Clone

Product data:

| | |
|---------------------------|---|
| Product Type: | Expression Plasmids |
| Product Name: | CNOT4 (NM_001190848) Human Tagged ORF Clone |
| Tag: | Myc-DDK |
| Symbol: | CNOT4 |
| Synonyms: | CLONE243; NOT4; NOT4H |
| Mammalian Cell Selection: | Neomycin |
| Vector: | pCMV6-Entry (PS100001) |
| E. coli Selection: | Kanamycin (25 ug/mL) |



[View online »](#)

ORF Nucleotide Sequence:

>RC231320 representing NM_001190848
 Red=Cloning site Blue=ORF Green=Tags(s)

TTTTGTAATACGACTCACTATAGGGCGGCCGGAATTCGTCGACTGGATCCGGTACCGAGGAGATCTGCC
 GCC**CGGATCGCC**

ATGTCTCGCAGTCTGATGCGAAGGAAGACCCTGTGGAGTGCCCTCTTTCATGGAGCCCTGGAGATAG
 ATGATATCAACTTTTCCCTTGACCTGTGGCTACCAGATTTGCCGATTTGTTGGCATCGAATTCGCAC
 TGATGAAAATGGCTTTGTCTGCATGTAGAAAGCCATATCCAGAAGACCCAGCAGTTTATAAAACCACT
 TCCCAGGAAGAGCTGCAAAGGATAAAGAATGAGAAAAACAGAAACAAAATGAGAGAAAACAGAAAATAT
 CAGAAAATCGAAACATTTGGCTAGTGTACGTGTCTACAAAAAACCTCGTCTTTGTTGTAGGTTTATC
 TCAGCGCTAGCAGACCCAGAGGTTTTAAAACGACCAGAATATTTTGGGAAGTTTGGTAAAAACATAAA
 GTTGTCAATAATAGCACATCATATGCAGGCTCACAGGGTCCAAGTCCAGTGCTTATGTAACCTATA
 TCCGGTCAGAAGACGCTCTCAGAGCCATACAGTGTGTCAACAATGTGGTAGTAGTGGCAGAACACTTAA
 GGCATCTCTAGGTACAACAAAATACTGCAGTACTTCTTAAAGAATATGCAGTGTCCAAAACCTGACTGC
 ATGTATCTTCATGAATTTGGGGATGAGGCGGCCAGCTTCAAAAAGAGGAAATGCAGGCGGGTAAACACC
 AAGAATATGAACAGAAGCTACTTCAAGAATTATATAAAATTAATCCCAATTTTCTTCAGCTATCTACGGG
 TTCAGTTGATAAAAAAAGAACAAGTGACACCACTGCAGAGGTACGATACCCCCATTGACAAAACCTTCA
 GATTCTCTCAGTATAGGGAACGGTGATAATCCCAGCAGATATCTAACAGTGTACGCCTTACCACCAC
 CTGGTTTGTCAAATCCAATCCAGTCAATCCCATCAGTTCATCCAATCACAGTGCACGGTCCCCTTTTGA
 AGGGGCAGTAACAGAGTACAGTGTATTCTCAGACAATTTTCGCCATCCCAACCTATCCCAAGTGGG
 CTTCTCTTTCCCCAGCTCCCCACAGACATCCAGTACTGGCTACAGCACCAGAACCACAGAGCCTCT
 TCACATCAGAAACAATCCAGTATCATCTCTACAGACTGGCAAGCAGCTTTTGGCTTTGTTCTCTTAA
 ACAACCAGAGGATGACTTGGGTTTTGATCCCTTCGATGTCACTCGAAAAGCCTTAGCAGACCTGATTGAG
 AAGGAAGTGTCCGTTCAAGACCAACCTCCCTTTCGCCACATCTCTTCAAGAACTCTTTCACACACTA
 CAACCGCCAAAGGTCCAGGCTCTGGATTCTGCATCTCTGCTGCAGCTACAAATGCCAATTCTCTCAATAG
 TACCTTTTCAGTCTTGGCCAGAGGTTCCCTCAATTTTCAGCAGCACCAGCGGTTTATAATTCATTAGT
 TTTCCAGGCCAGGACCCGCTATCCTTGGATGGCCTTTCACGCAATAGCATCATGCATTGAACCACA
 CAGCAAACCCACCTCAAATAGTAATTTCTGGACTTGAATCTCCCGCCACAGCACAACACAGGTCTGGG
 AGGGATCCCTGTAGCAGGGAAGAAGAGGTGAAGGTTTCGACCATGCCACTGTCAACCTCTCCATTCA
 TTACAACAAGGACAGCAGCCTACAAGTCTCCACACTACTGTGGCC

ACGCGTACGCGGCGCTCGAGCAGAAACTCATCTCAGAAGAGGATCTGGCAGCAAATGATATCCTGGATT
 ACAAGGATGACGACGATAAGGTTTAA

Protein Sequence:

>RC231320 representing NM_001190848
 Red=Cloning site Green=Tags(s)

MSRSPDAKEDPVECPLCMEPLEIDDINFFPCTCGYQICRFCWHIRTDENGLCPACRKPYPEDPAVYKPL
 SQEELQRKNEKQKQNERKQKISENRKHLASVRVQKLVFVVGLSQRLADPEVLKRPEYFGKFGKIHK
 VVINNSTSYAGSQGPSASAYVTYIRSEDALRAIQCVNNVVVDGRTLKASLGTTKYCSYFLKNMQCPKPCD
 MYLHELGDAAASFKEEMQAGKHQEQKLLQELYKLNPNFLQLSTGSDKNKNKVTPLQRYDTPIDKPS
 DSLSIGNDNSQQISNSDTPSPPPGLSKSNPVIPISSSNHSARSPFEGAVTESQSLFSDNFRHPNPIPSPG
 LPPFPSSPQTSSDWPTAPEPQSLFTSETIPVSSSTDWQAAFQFGSSKQPEDDLGDFDFVTRKALADLIE
 KELSVQDQPSLSPTSLQNSSHTTTAKGPGSGFLHPAAATNANSLNSTFVLPQRFPPQFQHRVYNSFS
 FPGQAARYPWMAFPRNSIMHLNHTANPTSNSNFLDLNLPQHNTGLGGIPVAGEEEVKVSTMPLSTSSH
 LQQGQPTSLHTTVA

TRTRPLEQKLISEEDLAANDILDYKDDDDKV

Chromatograms:

https://cdn.origene.com/chromatograms/mk8068_a06.zip

Restriction Sites:

Sgfl-MluI

Cloning Scheme:


ACCN: NM_001190848

ORF Size: 1725 bp

OTI Disclaimer: The molecular sequence of this clone aligns with the gene accession number as a point of reference only. However, individual transcript sequences of the same gene can differ through naturally occurring variations (e.g. polymorphisms), each with its own valid existence. This clone is substantially in agreement with the reference, but a complete review of all prevailing variants is recommended prior to use. [More info](#)

OTI Annotation: This clone was engineered to express the complete ORF with an expression tag. Expression varies depending on the nature of the gene.

Components: The ORF clone is ion-exchange column purified and shipped in a 2D barcoded Matrix tube containing 10ug of transfection-ready, dried plasmid DNA (reconstitute with 100 ul of water).

Reconstitution Method:

1. Centrifuge at 5,000xg for 5min.
2. Carefully open the tube and add 100ul of sterile water to dissolve the DNA.
3. Close the tube and incubate for 10 minutes at room temperature.
4. Briefly vortex the tube and then do a quick spin (less than 5000xg) to concentrate the liquid at the bottom.
5. Store the suspended plasmid at -20°C. The DNA is stable for at least one year from date of shipping when stored at -20°C.

RefSeq: [NM_001190848.1](#), [NP_001177777.1](#)

RefSeq ORF: 1728 bp

Locus ID: 4850

UniProt ID: [O95628](#)

Cytogenetics: 7q33

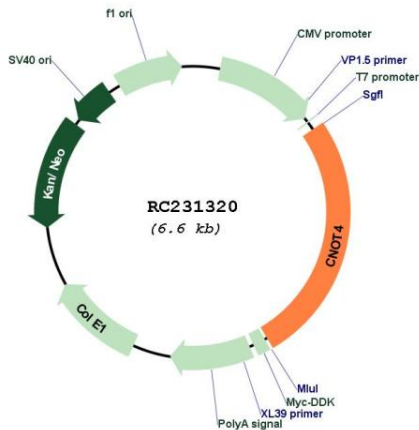
Protein Families: Druggable Genome, Transcription Factors

Protein Pathways: RNA degradation

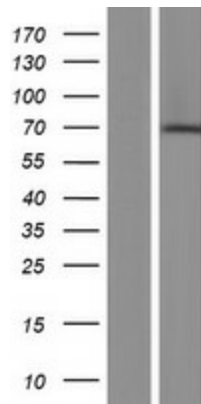
MW: 64 kDa

Gene Summary: The protein encoded by this gene is a subunit of the CCR4-NOT complex, a global transcriptional regulator. The encoded protein interacts with CNOT1 and has E3 ubiquitin ligase activity. Several transcript variants encoding different isoforms have been found for this gene.[provided by RefSeq, Jul 2010]

Product images:



Circular map for RC231320



Western blot validation of overexpression lysate (Cat# [LY434319]) using anti-DDK antibody (Cat# [TA50011-100]). Left: Cell lysates from untransfected HEK293T cells; Right: Cell lysates from HEK293T cells transfected with RC231320 using transfection reagent MegaTran 2.0 (Cat# [TT210002]).