

Product datasheet for **RC231319**

NOL4 (NM_001198546) Human Tagged ORF Clone

Product data:

Product Type:	Expression Plasmids
Product Name:	NOL4 (NM_001198546) Human Tagged ORF Clone
Tag:	Myc-DDK
Symbol:	NOL4
Synonyms:	CT125; HRIHFB2255; NOLP
Mammalian Cell Selection:	Neomycin
Vector:	pCMV6-Entry (PS100001)
E. coli Selection:	Kanamycin (25 ug/mL)



[View online »](#)

ORF Nucleotide Sequence:

>RC231319 representing NM_001198546
 Red=Cloning site Blue=ORF Green=Tags(s)

TTTTGTAATACGACTCACTATAGGGCGGCCGGAATTCGTCGACTGGATCCGGTACCGAGGAGATCTGCC
 GCC**CGCATCGCC**

ATGGAGAGCGAGCGCACATGTACCGCCAGTTCAGGACTGGTGCCTCAGGACTTACGGGGACTCAGGCA
 AGACCAAGACGGTGACCCGTAAAAAATACGAACGGATCGTCCAGCTCCTCAATGGCTCCGAGTCGAGCTC
 CACGGACAACGCCAAATTTAAATTTCTGGGTCAAATCGAAGGGCTTCCAGCTGGGCCAGCCGGACGAGGT
 CGCGGGGGAGGCGGCGGCCAAGCAAGTCTCTACGTGCCTGTCAAGACCACGGATGGCGTAGGGGTAG
 ATGAGAAGCTATCTTTACGACGGGTAGCTGTGGTTGAAGATTTCTTTGACATTATTTATTCGATGCATGT
 GGAAACGGGGCCAAATGGAGAACAATTCGAAACACGCTGGACAAAAGAGAACTTACAAAGCAATTTCA
 GAGAGCTATGCCTTCTACCAAGAGAAGCGGTGACACGATTTCTAATGAGCTGCTCAGAGTGCCAGAAAA
 GAATGCATTTAAACCCAGATGGAACAGATCATAAAGATAATGGAAAACCTCCACTTTGGTGACCAGCAT
 GATTGACTACAACATGCCAATTACCATGGCCTACATGAAACACATGAAGCTGCAGCTGCTAAACTCACAG
 CAAGATGAGGATGAAAGTTCAATAGAAAGTGATGAATTTGACATGAGTGATTCAACACGGATGTCAGCTG
 TGAACTCTGATCTTAGCTCCAATCTTGAAGAAAGAAATGCAAAGTCCCCAGAATCTTCATGGCCAGCAAGA
 TGATGATTCTGCTGCAGAGAGCTTAAATGGCAATGAGACTCTGGGGCACAGTTCAATTGCTTCAGGGGGA
 ACACACAGCAGGGAGATGGGAGACTCCAACAGTGTGGCAAACTGGGCTGGAGCAAGATGAACAGCCAC
 TGAACCTGAGTGACAGTCCCCTCTGCGCAGCTAACTTCGGAATACAGAATAGATGATCACAACAGTAA
 TGGGAAAAACAAGTATAAGAATCTTCTAATTTCTGACCTCAAGATGGAACGAGAGGCGAGAGAAAAATGGA
 AGCAAGTCTCTGCACATAGTTACTCCAGCTATGACTCTGGCAAAAATGAGAGTGTAGACCGAGGAGCTG
 AGGACCTCTCACTAAACAGGGGAGATGAGGACGAAGATGACCAGGAGCCATGACGATTCGGGAAAAGT
 TAATGAGACAGACGGCGTTGAAGCCGAGCGGCTGAAAGCTTTTAAATCTCGACCTATTCCTTCCCACCTT
 ACTTCAGCAGTTGCAGAGAGTATCTTGGCTTCAGCTTGTGAGAGTGAAGATGCCGCCAAGAGGA
 TCGCTCTGGAGAGACAGCAGGATGAGTCTGCTCCAGCTGACAAACAGTGTAAACCAGAGGCGACCCAGGC
 CACTTACTCAACATCAGCTGTTCCAGGCTCACAGGACGTGCTGTACATCAATGGAATGGACCTATAGT
 TACCATAGTTACAGAGGGCTAGGAGGGGTCTGCTAAATCTGAATGATGCTTCCAGCAGTGGACCCACTG
 ATCTCAGCATGAAGAGACAATTGGCGACTAGCTCAGGATCCTCCAGCAGCTCAAACCTCCAGACCCAGCT
 GAGTCCAACCTGAAATCAATGCCGTGAGACAGCTTGTTCAGGATATCGAGAATCAGCTGCATTTTTATTG
 CGATCTGCAGATGAACTGAAAAATCTATTTTACAACAGAAC

ACGCGTACGCGGCCGCTCGAGCAGAAACTCATCTCAGAAGAGGATCTGGCAGCAAATGATATCCTGGATT
 ACAAGGATGACGACGATAAGGTTTAA

Protein Sequence:

>RC231319 representing NM_001198546
 Red=Cloning site Green=Tags(s)

MESERDMYRQFQDWCLRTYGDGSKTKTVTRKKYERIVQLLNGSESSSTDNAKFKFWVSKGFQLGQPDEV
 RGGGGGAKQVLYVPVKTTDGVGVDEKLSLRRAVAVVDFDIIYSMHVETGPNGEQIRKHAGQKRTYKAIS
 ESYAFLPREAVTRFLMSCSECQKRMHLNPDGTDHKDNGKPPTLVTSMDYNNPITMAYMKHMKLQLLNSQ
 QDEDESSIESDFDMSDSTRMSAVNSDLSSNLEERMQSPQNLHGQQDDDSAAESFNNGNETLGHSSIASGG
 THSREMGDSNSDGKTGLEQDEQPLNLSDSPLSAQLTSEYRIDDHNSNGKNKYKNLLISDLKMEREARENG
 SKSPAHSYSSYDSGKNESVDRGAEDLSLNRGDEDEDHEDHDDSEKVNETDGVEAERLKAFNSRPIPSHL
 TSAVAESILASACESESRNAAKRMRLERQQDESAPADKQCKPEATQATYSTSAVPGSQDVLVINGNGTYS
 YHSYRGLGGLLNLNDASSGPTDLSMKRQLATSSGSSSSNSRPQLSPTEINAVRQLVAGYRESAAFL
 RSDALENLILQQN

TRTRPLEQKLISEEDLAANDILDYKDDDDKV

Chromatograms:

https://cdn.origene.com/chromatograms/mk8068_a01.zip

Restriction Sites:

Sgfl-Mlul

Cloning Scheme:

ACCN: NM_001198546

ORF Size: 1722 bp

OTI Disclaimer: The molecular sequence of this clone aligns with the gene accession number as a point of reference only. However, individual transcript sequences of the same gene can differ through naturally occurring variations (e.g. polymorphisms), each with its own valid existence. This clone is substantially in agreement with the reference, but a complete review of all prevailing variants is recommended prior to use. [More info](#)

OTI Annotation: This clone was engineered to express the complete ORF with an expression tag. Expression varies depending on the nature of the gene.

Components: The ORF clone is ion-exchange column purified and shipped in a 2D barcoded Matrix tube containing 10ug of transfection-ready, dried plasmid DNA (reconstitute with 100 ul of water).

Reconstitution Method:

1. Centrifuge at 5,000xg for 5min.
2. Carefully open the tube and add 100ul of sterile water to dissolve the DNA.
3. Close the tube and incubate for 10 minutes at room temperature.
4. Briefly vortex the tube and then do a quick spin (less than 5000xg) to concentrate the liquid at the bottom.
5. Store the suspended plasmid at -20°C. The DNA is stable for at least one year from date of shipping when stored at -20°C.

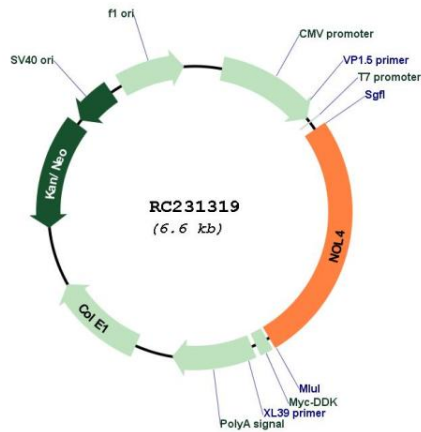
RefSeq: [NM_001198546.1](#), [NP_001185475.1](#)
RefSeq ORF: 1725 bp

Locus ID: 8715

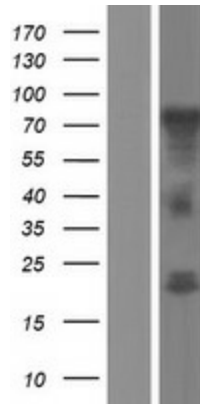
UniProt ID: [O94818](#)
Cytogenetics: 18q12.1

MW: 63.9 kDa

Product images:



Circular map for RC231319



Western blot validation of overexpression lysate (Cat# [LY434318]) using anti-DDK antibody (Cat# [TA50011-100]). Left: Cell lysates from untransfected HEK293T cells; Right: Cell lysates from HEK293T cells transfected with RC231319 using transfection reagent MegaTran 2.0 (Cat# [TT210002]).