

Product datasheet for **RC231318**

IFFO (IFFO1) (NM_001193457) Human Tagged ORF Clone

Product data:

Product Type:	Expression Plasmids
Product Name:	IFFO (IFFO1) (NM_001193457) Human Tagged ORF Clone
Tag:	Myc-DDK
Symbol:	IFFO
Synonyms:	HOM-TES-103; IFFO
Mammalian Cell Selection:	Neomycin
Vector:	pCMV6-Entry (PS100001)
E. coli Selection:	Kanamycin (25 ug/mL)



[View online »](#)

ORF Nucleotide Sequence:

>RC231318 representing NM_001193457
 Red=Cloning site Blue=ORF Green=Tags(s)

TTTTGTAATACGACTCACTATAGGGCGGCCGGAATTCGTCGACTGGATCCGGTACCGAGGAGATCTGCC
 GCC**GCGATCGCC**

ATGAATCCGTTATTCGGCCCCAACCTCTTCTCTGCAGCAGGAGCAGCAGGGCCTGGCCGGCCACTGG
 GGGACTACTGGGAGCGACCACTTCGCCGGGGAGGAGACTTGCCCCGGCGCCTCTCGCCGGCCGG
 CCCTGCTGCCTACTCGCCGCCGGGGCCGGCCCGCCCTGCCGCCATGGCCCTCCGCAATGACCTG
 GGCTCCAACATCAACGTCTCAAGACCCTGAACCTCCGGTTCCGCTGCTTCTGGCCAAGGTGCATGAGC
 TGGAGCGCCGAACCGGCTGTTGGAGAAGCACTGCAGCAAGCGCTGGAGGAGGGTAAGCAGGGCCGGCG
 GGGCCTGGGTCTCGGACCAGGCAGTGCAGACCAGGCTTCGTGAGCCCCATCCGGCCCTGGGGCTGCAG
 CTGGGCGCCCGCCGGCCGCTGTCTGCAGCCCTTCGGCGCGCTGCTGGGCTCGCCCGCGCCTCCCGG
 CCGGCCCTCGGCCCTCCGGCCAGCCTCTCGTCTCTCCACCTCCACCTCCACCACCTATTCCTC
 GTCGGCCCGCTTCATGCCCGCACCATCTGGTCTGTTCTGCAGCCCGCCGGCTCGGGCCGGACTGGAG
 CCCACTCTGGTGAAGGGCCTGGCTTGTCTGGGTGCACCCGGATGGGGTGGGCTCCAGATCGACACCA
 TCACGCCCGAGATCCGCGCTCTCTACAACGTGCTGGCCAAAGTGAAGCGGGAGCGGGACGAGTACAAGCG
 GAGGTGGGAAGAGGAGTACACGGTCCGGATCCAGCTGCAAGACCGTGAATGAGCTCCAGGAGGAAGCC
 CAGGAGGCTGATGCTGCCAGGAGGAGCTGGCACTGAAGTGAACAGTTGAAGGCTGAGCTGGTGGTCT
 TCAAGGGGCTCATGAGTAAACCTGTCGGAGCTGGACACCAAGTCCAGGAGAAAGCCATGAAGGTGGA
 TATGGACATCTGCCCGCCATCGACATCACCGCAAGCTCTGCGATGTGGCTCAGCAGCGCAACTGCGAG
 GACATGATCCAGATGTTCCAGAAGAAGCTGTCTGCACTTGTCTCCATTAAGGTCCCATCCATGGGGG
 GCGCGAAGCGGGAGCGCAAGGCTGCCGTGAGGAGGACACCTCCCTGTGCGAGAGTGGGGCCCGCCCA
 GCCGATGGGGATGAGGAGGAGAGCACAGCCCTCAGCATCAACGAGGAGATGCAGCGCATGCTCAACCAG
 CTGAGGGAGTATGATTTTGGAGCAGCTGTGACAGCCTGACTTGGGAGGAGACTGAGGAGACCCTGCTGC
 TTTGGGAGGATTTCTCAGGCTATGCCATGGCAGCTGCAGAGGCCAGGGAGAGCAGCAGGAAGATAGCCT
 GGAGAAGGTGATTAAGATACGGAGTCCCTGTTCAAACCCGGGAGAAGGAGTATCAGGAGACCATTGAC
 CAGATAGAGCTGGAGTTGGCCACGGCAAGAACGACATGAACCGCACCTGCACGAGTACATGGAGATGT
 GCAGCATGAAGCGCGCCTGGACGTGCAGATGGAGACCTGCCCGCGCTCATACCCAGTCTGGAGACCG
 AAAGTCTCTGCTTCTACTGCGTCCCCTTAGCGACCCGCCCGCCGCAAGCGAGGCTGAGGACTCC
 GATCGCGATGTCTCATCTGACAGCTCCATGAGA

ACGCGTACGCGGCCGCTCGAGCAGAACTCATCTCAGAAGAGGATCTGGCAGCAAATGATATCCTGGATT
 ACAAGGATGACGACGATAAGGTTTAA

Protein Sequence:

>RC231318 representing NM_001193457
 Red=Cloning site Green=Tags(s)

MNPLFGPNLFLLQQEQQLAGPLGDSLGGDHFAGGDLPPAPLSPAGPAAYSPGPGPAPPAAMALRNDL
 GSNINVLKTLNLRFRFLAKVHELERRNLLKQLQQALEEGKQRRRLGRRDQAVQTFVSPIRPLGLQ
 LGARPAAVCSPSARVLGSPARSPAGPLAPSAASLSSSSTSTSTTYSSSARFMPGTIWSFSHARRLGPGL
 PTLVQGPGLSWVHPDGVGVQIDITPEIRALYNVLAKVKRERDEYKRRWEEETVRIQLQDRVNELQEEA
 QEADACQEELALKVEQLKAEVVFKGLMSNNLSELDTKIQEKAMKVDMDICRRIDITAKLCDVAQQRNCE
 DMIQMFQKLSLHLSPIKVPMSGGRKRERKAAVEEDTSLSESGPRQPDGDEEESTALSINEEMQRLNQL
 LREYDFEDDCDSLWEEETEELLLWEDFSGYMAAAEAQGEQEDSLEKVIKDTESLFKTREKEYQETID
 QIELELATAKNDMNRHLHEMEMCSMKRGLDVQMETCRRLITQSGDRKSPAFTAVPLSDPPPPSEAE
 DRDVSSDSSMR

TRTRPLEQKLISEEDLAANDILDYKDDDDKV

Chromatograms:

https://cdn.origene.com/chromatograms/mk8067_g11.zip

Restriction Sites:

Sgfl-Mlul

Cloning Scheme:


ACCN: NM_001193457

ORF Size: 1713 bp

OTI Disclaimer: The molecular sequence of this clone aligns with the gene accession number as a point of reference only. However, individual transcript sequences of the same gene can differ through naturally occurring variations (e.g. polymorphisms), each with its own valid existence. This clone is substantially in agreement with the reference, but a complete review of all prevailing variants is recommended prior to use. [More info](#)

OTI Annotation: This clone was engineered to express the complete ORF with an expression tag. Expression varies depending on the nature of the gene.

Components: The ORF clone is ion-exchange column purified and shipped in a 2D barcoded Matrix tube containing 10ug of transfection-ready, dried plasmid DNA (reconstitute with 100 ul of water).

Reconstitution Method:

1. Centrifuge at 5,000xg for 5min.
2. Carefully open the tube and add 100ul of sterile water to dissolve the DNA.
3. Close the tube and incubate for 10 minutes at room temperature.
4. Briefly vortex the tube and then do a quick spin (less than 5000xg) to concentrate the liquid at the bottom.
5. Store the suspended plasmid at -20°C. The DNA is stable for at least one year from date of shipping when stored at -20°C.

RefSeq: [NM_001193457.2](#)

RefSeq ORF: 1716 bp

Locus ID: 25900

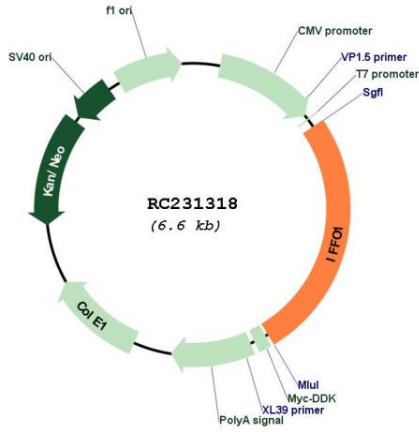
Cytogenetics: 12p13.31

Protein Families: Druggable Genome

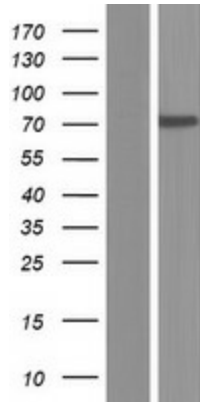
MW: 63.8 kDa

Gene Summary:

This gene is a member of the intermediate filament family. Intermediate filaments are proteins which are primordial components of the cytoskeleton and nuclear envelope. The proteins encoded by the members of this gene family are evolutionarily and structurally related but have limited sequence homology, with the exception of the central rod domain. Multiple alternatively spliced transcript variants encoding different isoforms have been found for this gene. [provided by RefSeq, Jul 2010]

Product images:


Circular map for RC231318



Western blot validation of overexpression lysate (Cat# [LY434317]) using anti-DDK antibody (Cat# [TA50011-100]). Left: Cell lysates from untransfected HEK293T cells; Right: Cell lysates from HEK293T cells transfected with RC231318 using transfection reagent MegaTran 2.0 (Cat# [TT210002]).