

Product datasheet for **RC231312**

TBC1D24 (NM_001199107) Human Tagged ORF Clone

Product data:

Product Type:	Expression Plasmids
Product Name:	TBC1D24 (NM_001199107) Human Tagged ORF Clone
Tag:	Myc-DDK
Symbol:	TBC1D24
Synonyms:	DEE16; DFNA65; DFNB86; DOORS; EIEE16; EPRPDC; FIME; TLDC6
Mammalian Cell Selection:	Neomycin
Vector:	pCMV6-Entry (PS100001)
E. coli Selection:	Kanamycin (25 ug/mL)



[View online »](#)

ORF Nucleotide Sequence:

>RC231312 representing NM_001199107
 Red=Cloning site Blue=ORF Green=Tags(s)

TTTTGTAATACGACTCACTATAGGGCGGCCGGAATTCGTCGACTGGATCCGGTACCGAGGAGATCTGCC
 GCC**CGCATCGCC**

ATGGACTCTCCAGGATACAACCTGCTTCGTGGACAAAGACAAGATGGACGCTGCCATCCAGGACCTGGGGC
 CCAAGGAGCTGAGCTGCACTGAACTGCAGGAAGTGAAGCAGCTGGCGCGCCAGGGCTACTGGGCCAAAG
 CCACGCCCTGCGGGGAAAAGGTGTACCAGCGCTGATCCGGGACATTCCCTGCCGCACGGTACGCCTGAC
 GCCAGCGTGTACAGCGACATCGTGGGCAAGATCGTGGGCAAGCACAGCAGCAGCTGCCTGCCGCTGCCCG
 AGTTCTGTGGACAACACGCAGGTGCCAGCTACTGCCTGAATGCACGCGCGAGGGGGCCGTGCGCAAGAT
 CCTCTGTGCCTGGCCAACCACTTCCCCGACATCTCTTCTGCCCGCCCTGCCGGCCGTGGTGGCCCTG
 CTGCTGCACTACAGCATCGACGAGGCCGAGTGTTCGAGAAGGCCTGCCGCATCTGGCCTGCAATGACC
 CCGGCAGGAGGCTGATCGACCAGAGCTTCTGGCCTTTGAGTCGTCTGCATGACGTTTGGGGACCTGGT
 GAACAAGTACTGCCAGGCGGCCACAAGCTGATGGTGGCCGTGTGGAGGATGTCTGCAGGTCTATGCG
 GACTGGCAGCGCTGGCTGTTGGGGAGCTGCCCTCTGCTACTTCGCCCGGGTCTTTGACGCTTCTCTGG
 TGGAGGGCTACAAGGTGCTGTACCAGCGTGGCGCTGGCCATCTCAAGTCTTCCACAAGGTGAGGGCCGG
 GCAGCCGCTGGAGTCGGACAGCGTGAAGCAGGACATCCGCACGTTCTGTCAGAGACATCGCAAGACGGTG
 TCCCTGAGAAGCTGCTGGAGAAAGCGTTCGCCATCCGCCTTCTCTCCGCAAGGAGATCCAGCTCTGCA
 AGATGGCAATGAGAAAGCCCTGAAGCAGAAGGGCATCACCGTGAAGCAGAAGAGTGTGTCACTTTCTAA
 AAGGCAGTTTGTACACTTGGCCGTCCATGCAGAGAAGTCCGCTCGGAGATCGTCAGCGTGAAGGAGATG
 AGAGACATCTGGTCTGGTCCCGAGCGCTTTGCCCTGTGCCAGCCCTTCTGCTGTTCTCCTCCCTGC
 AGCAGCGGTACAGCTGGCCAGTCTACTTCCAGTGTGAAGGACATGAGCCTACCCTCTGTCTCAAA
 GACCACGCAGAAGGAGGTGTGTGGTCTTACCTGTCCACAGACTGGAGTGAGAGAAATAAGTTTGGAGGC
 AAAGTGGCTTCTTTGGACCGGAGAATGCTTTGTGTTTGGCTGCAGCCTGAGGTGCAGCGCTACGAGT
 GGGTGGTGTCAAGCACCCCGAGCTGACCAAGCCCCACCCTTGTGGTGGCTGCCGAGCCACCGCCCACT
 CAGCCACTCCGCCTCTCAGACCCCGCTGACCGCTCTCGCCCTTCTGGCCGCTCGCCACTTCAACCTG
 CCCTCCAAGACCGAGTCCATGTTTATGGCGGGGGCAGCGACTGCCTCATCGTGGGGGAGGAGGGCGCC
 AGGCGCTACATCGATGGGACCTGAACCGGGGCGCACAGCCACTGCGACACCTTCAACAACCGCC
 CCTCTGCTCCGAGAACTCTCTATTGCTGCCGTGGAGGCTGGGGCTTCCAGGACCTGACACCCAG

ACGCGTACGCGGCCGCTCGAGCAGAAACTCATCTCAGAAGAGGATCTGGCAGCAAATGATATCTGGATT
 ACAAGGATGACGACGATAAGGTTTAA

Protein Sequence:

>RC231312 representing NM_001199107
 Red=Cloning site Green=Tags(s)

MDSPGYNCVFDKDKMDAAIQDLGPKELSCTELQELKQLARQGYWAQSHALRGKVVYQRLIRDIPCRVTVPD
 ASVYSDIVGKIVGKHSSSCLPLPEFVDNTQVPSYCLNARGEGAVRKILLCLANQFPDISFCPALPAVVAL
 LLHYSIDEAEFEKACRILACNDPGRRLIDQSFLAFESSCMTFGDLVNKYCQAAHKLMVAIVEDLQVYA
 DWQRWLFGELPLCYFARVFDVFLVEGYKLYRVALAILKFFHKVRAGQPLESDSVKQDIRTFVRDIKTV
 SPEKLLLEKAFIRLFSRKEIQLLQMANEKALKQKGITVKQKSVLSKRQFVHLAVHAENFRSEIVSVREM
 RDIWSWVPERFALCQPLLLFSSLQHGYSLARFYFQCEGHEPTLLLTKTTQKEVCGAYLSTDWERNKFGG
 KLGFFGTGECFVRLQPEVQRYEWWVIKHPELTKPPPLMAAEPTAPLSHSASSDPADRLSPFLAARHFNL
 PSKTESMFMAGGSDCLIVGGGGQALYIDGDLNRGRTSHCDTFNNQPLCSENFLIAAVEAWGFQDPDTQ

TRTRPLEQKLISEEDLAANDILDYKDDDDKV

Chromatograms:

https://cdn.origene.com/chromatograms/mk8067_c05.zip

Restriction Sites:

Sgfl-MluI

Cloning Scheme:


ACCN: NM_001199107

ORF Size: 1677 bp

OTI Disclaimer: The molecular sequence of this clone aligns with the gene accession number as a point of reference only. However, individual transcript sequences of the same gene can differ through naturally occurring variations (e.g. polymorphisms), each with its own valid existence. This clone is substantially in agreement with the reference, but a complete review of all prevailing variants is recommended prior to use. [More info](#)

OTI Annotation: This clone was engineered to express the complete ORF with an expression tag. Expression varies depending on the nature of the gene.

Components: The ORF clone is ion-exchange column purified and shipped in a 2D barcoded Matrix tube containing 10ug of transfection-ready, dried plasmid DNA (reconstitute with 100 ul of water).

- Reconstitution Method:**
1. Centrifuge at 5,000xg for 5min.
 2. Carefully open the tube and add 100ul of sterile water to dissolve the DNA.
 3. Close the tube and incubate for 10 minutes at room temperature.
 4. Briefly vortex the tube and then do a quick spin (less than 5000xg) to concentrate the liquid at the bottom.
 5. Store the suspended plasmid at -20°C. The DNA is stable for at least one year from date of shipping when stored at -20°C.

RefSeq: [NM_001199107.2](#)

RefSeq ORF: 1680 bp

Locus ID: 57465

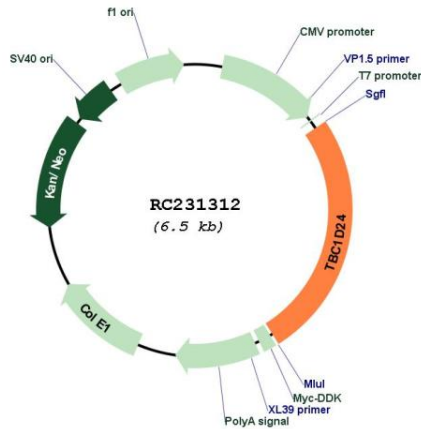
UniProt ID: [Q9ULP9](#)

Cytogenetics: 16p13.3

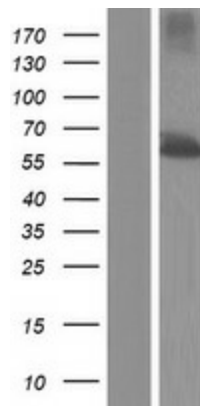
MW: 63.4 kDa

Gene Summary: This gene encodes a protein with a conserved domain, referred to as the TBC domain, characteristic of proteins which interact with GTPases. TBC domain proteins may serve as GTPase-activating proteins for a particular group of GTPases, the Rab (Ras-related proteins in brain) small GTPases which are involved in the regulation of membrane trafficking. Mutations in this gene are associated with familial infantile myoclonic epilepsy. Alternative splicing results in multiple transcript variants. [provided by RefSeq, Feb 2011]

Product images:



Circular map for RC231312



Western blot validation of overexpression lysate (Cat# [LY434311]) using anti-DDK antibody (Cat# [TA50011-100]). Left: Cell lysates from untransfected HEK293T cells; Right: Cell lysates from HEK293T cells transfected with RC231312 using transfection reagent MegaTran 2.0 (Cat# [TT210002]).