

Product datasheet for **RC231304**

TDRD5 (NM_001199092) Human Tagged ORF Clone

Product data:

Product Type:	Expression Plasmids
Product Name:	TDRD5 (NM_001199092) Human Tagged ORF Clone
Tag:	Myc-DDK
Symbol:	TDRD5
Synonyms:	TUDOR3
Mammalian Cell Selection:	Neomycin
Vector:	pCMV6-Entry (PS100001)
E. coli Selection:	Kanamycin (25 ug/mL)



[View online »](#)

ORF Nucleotide Sequence:

>RC231304 representing NM_001199092
 Red=Cloning site Blue=ORF Green=Tags(s)

TTTTGTAATACGACTCACTATAGGGCGGCCGGAATTCGTCGACTGGATCCGGTACCGAGGAGATCTGCC
 GCC**CGCATCGCC**

ATGGCAAATCATGACATCCCGCCAGACGCTGTGCCGAACAAGAAATTATGCAGACTCCACCATTAGACA
 CCAGTTCCTCATAGGGGTCTTTGTGGAGTATATCATCTCCTAGTCAATTCTACATCCGGATCTATAG
 CAGGGATTCGTCAGAGTTACTCGAAGACATGATGATTGAAATGCGGCGCTGTTATTCTAATCAGCTGGTT
 TCTGATCGATATGTCATGCCAGAATGTTTTATTACCCGGGACATCTCTGTTGTGAAGGATTTCTGAGG
 ATAAGTGGTGGTATCGGGTCATTATCCATCGAGTCCTTGAGAAACAGGAAGTTGAAGTGTCTACCCAGA
 CTTTGGAAATATTGGAATTGTTGAGAAGTCTCCCTGAGGTTCTCAAGTGTCTACACAAAGCTTCCA
 GCTCAGGCTATCCCTTGTCTTTGGCTTGGGTGAGACCAGTAGAGGAACACTGGACATCGAAAGCTATTT
 TGCAGTCCAGAAGTTGTGCGGTTTGAAGCCATTAGTGGGGTAGTGGATGAATATGTAGATGGAATCCT
 TAACATTTTTTTGTGTGACACATCTCAAACGAAGATGTCTATTTCCATCATGTCTTGAGAACAGAGGGC
 CATGCTATTGTATGCCGAGAAAATATCTCTTCTAAGGGTTTCAGTGAGCTCAACCCTTTAGCTTTATACA
 CGACATCCAGTGGAGGGCCAGAGGACATTGTCTTGACAGAAGTGGTTATCCTTCCCAGCAGCACTATTT
 TAATGAAGACCGAAAGATAAGTCCACAGTCAAAGAGAGTGAGTTACGTATCTTGGATGAGATCCCCACT
 GGAATGCCATGCCTGGAGTCAGTGACCATAGGTGATGATTTGGGATGAGAAGTGGTTACCTCTACAGG
 CTAAGATGGGAAAAGGAGGTGATGCTGCCTCCCATCTATTTACTGCAAGCCTTGGTGAAAGAATCAGTA
 TTCATCATGTAAGAAAATGCCACAGAAGGACTGGTGTCTTTCTACCCCTAAAGATACATGGGATGATTCT
 TGGCAGCCTTCAGGCCTGTAAATGGAACGAAAGTAGAAGTTCATAAGCCAGAAGTACTGGGTCTCAGG
 AAAAAAATACTGGCACAACAGGACTCAAAGCAACTAGACATAAATGGTCTTCCAGATTCTCCACACT
 GCCCAAATTTGGAAGAATTCTGTACTCTCTTACCAGTACAGCAGTACAGCAGCGGAGCCAGTCTGAA
 CCCAACACAGTCAAGTCAAGCAGCCAAAGCAAATTCAGCTTCCACAGCAGCACCCCTGTTCAACAAGTGCAG
 TGGATGATCCGCAGAAAAGCCCTCTGTTCTGTGAAAGCTCACCAGAGATCCTAAAGAATGAAGATTT
 TTCTAGCAGCCGTGCTATTACATTGTACAAGACAAGCGTCAAGAATCTGTAGACCAGCTGTCTTTGATT
 TTGTCTTATGAGTGCCAGATTTCTCAGAAGCTCTACATTCCTCGAAGTACAGCCACTGCTGCCTTAGGTG
 CTGCCGACGGTTAGCTACATCCAGGAGCCTCTACACTGGTACCCAGTGTGAAAAGGATGGAAGCA

ACGCGTACGCGGCCGCTCGAGCAGAAACTCATCTCAGAAGAGGATCTGGCAGCAAATGATATCTGGATT
 ACAAGGATGACGACGATAAGGTTTAA

Protein Sequence:

>RC231304 representing NM_001199092
 Red=Cloning site Green=Tags(s)

MANHDIPPDAVPNKKLCRLPPLDTSSLIGVFVEYIISPSQFYIRIYSRDSSELLEMMIEMRRCYSNQLV
 SDRYVMPECFIQPHLCCVRISEDKWWYRVIHRVLEKQEVEVFYPDFGNIGIVQKSSRLFLKCCYTKLP
 AQAIPCSLAWVRPVEEHWTSKAILQFQKLCGLKPLVGVVDEYVDGILNIFLCDTSSNEDVYFHHVLRTEG
 HAIVCRENISSKGFSELNPLALYTTSSGGPEDIVLTELGYPSQQHYFNEDRKISPQSKSELRLIDEIPT
 GMPCLSVTIGDDIWDENWLPLQAKMGKGGDAASHLFTASLGGKNQYSSCKEMPQKDWCFSTPKDWDSS
 WQPSGLVNGTKVEVHKPEVLGAQEKNRTGNRTQKQLDINGSSDSTLPLKEEFCTSLTQSEQSADGSQSE
 PNNSQTQPKIQLSTAAPCSTTAVDDSAEKPSGVSSEIPEILKNEDFSSRAITLYKDKRQESVDQLSLI
 LSYECQISQKLYIPRSTATAALGAAARLATSRSLLHWYPSVKRMEA

TRTRPLEQKLISEEDLAANDILDYKDDDDKV

Chromatograms:

https://cdn.origene.com/chromatograms/ja1488_a11.zip

Restriction Sites:

Sgfl-MluI

Cloning Scheme:


ACCN: NM_001199092

ORF Size: 1608 bp

OTI Disclaimer: The molecular sequence of this clone aligns with the gene accession number as a point of reference only. However, individual transcript sequences of the same gene can differ through naturally occurring variations (e.g. polymorphisms), each with its own valid existence. This clone is substantially in agreement with the reference, but a complete review of all prevailing variants is recommended prior to use. [More info](#)

OTI Annotation: This clone was engineered to express the complete ORF with an expression tag. Expression varies depending on the nature of the gene.

Components: The ORF clone is ion-exchange column purified and shipped in a 2D barcoded Matrix tube containing 10ug of transfection-ready, dried plasmid DNA (reconstitute with 100 ul of water).

- Reconstitution Method:**
1. Centrifuge at 5,000xg for 5min.
 2. Carefully open the tube and add 100ul of sterile water to dissolve the DNA.
 3. Close the tube and incubate for 10 minutes at room temperature.
 4. Briefly vortex the tube and then do a quick spin (less than 5000xg) to concentrate the liquid at the bottom.
 5. Store the suspended plasmid at -20°C. The DNA is stable for at least one year from date of shipping when stored at -20°C.

RefSeq: [NM_001199092.1](#), [NP_001186021.1](#)

RefSeq ORF: 1611 bp

Locus ID: 163589

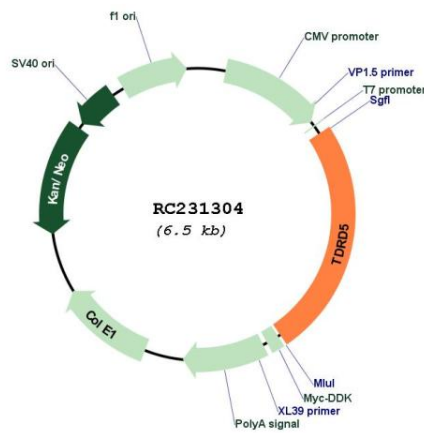
UniProt ID: [Q8NAT2](#)

Cytogenetics: 1q25.2

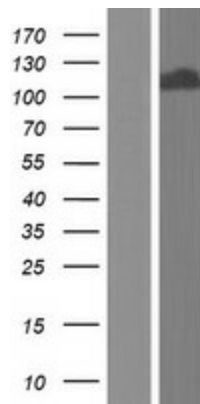
MW: 60.5 kDa

Gene Summary:

Required during spermiogenesis to participate in the repression transposable elements and prevent their mobilization, which is essential for the germline integrity. Probably acts via the piRNA metabolic process, which mediates the repression of transposable elements during meiosis by forming complexes composed of piRNAs and Piwi proteins and govern the methylation and subsequent repression of transposons. Required for chromatoid body (CB) assembly (By similarity).[UniProtKB/Swiss-Prot Function]

Product images:


Circular map for RC231304



Western blot validation of overexpression lysate (Cat# [LY434303]) using anti-DDK antibody (Cat# [TA50011-100]). Left: Cell lysates from untransfected HEK293T cells; Right: Cell lysates from HEK293T cells transfected with RC231304 using transfection reagent MegaTran 2.0 (Cat# [TT210002]).