

Product datasheet for **RC231294**

PPAN-P2RY11 (NM_001198690) Human Tagged ORF Clone

Product data:

Product Type:	Expression Plasmids
Product Name:	PPAN-P2RY11 (NM_001198690) Human Tagged ORF Clone
Tag:	Myc-DDK
Symbol:	PPAN-P2RY11
Synonyms:	BXDC3; P2RY11; P2Y11; PPAN; Ssf-1; SSF1
Mammalian Cell Selection:	Neomycin
Vector:	pCMV6-Entry (PS100001)
E. coli Selection:	Kanamycin (25 ug/mL)



[View online »](#)

ORF Nucleotide Sequence:

>RC231294 representing NM_001198690
 Red=Cloning site Blue=ORF Green=Tags(s)

TTTTGTAATACGACTCACTATAGGGCGGCCGGGAATTCGTCGACTGGATCCGGTACCGAGGAGATCTGCC
 GCC**CGGATCGCC**

ATGGGACAGTCAGGGAGTCCCAGCACCAAGCGCGCCCGCCAGGCGCAGTCCGCAACCTCGAGG
 CCTATGCCGGAACCCGCACTCGTTCGTGTTACGCGAGGCTGCACGGGTCGCAACATCCCGCAGCTCAG
 CCTGGACGTGCGGCGGGTCATGGAGCCGCTCACTGCCAGCCGTCTGCAGGTTCTGAAGAAGAACTCGCTG
 AAGGACTGCGTGGCAGTGGCTGGGCCCTCGGGGTACACACTTTCTGATCCTGAGCAAAACAGAGACCA
 ATGTCTACTTTAAGCTGATGCGCCTCCCAGGAGGCCACCTTGACCTCCAGGTCAAGAAGTACTCGCT
 GGTGCGTGTGGTCTCCTCACTGCGCCGCCACCGCATGCACGAGCAGCAGTTTGCCACCCACCCTC
 CTGGTACTCAACAGCTTTGGCCCCATGGTATGCATGTGAAGCTCATGGCCACCATGTTCCAGAACCTGT
 TCCCTCCATCAACGTGCACAAGGTGAACCTGAACACCATCAAGCGCTGCCTCCTCATCGACTACAACC
 CGACTCCCAGGAGCTGGACTTCCGCCACTATAGCATCAAAGTTGTTCTGTGGGCGGAGTCCGGGGATG
 AAGAAGCTGCTCCAGGAGAAGTTCCCAACATGAGCCGCTGCAGGACATCAGCGAGCTGCTGGCCACGG
 GCGCGGGGCTGTGCGGAGCGGAGGCAGAGCCTGACGGCGACCACAACATCACAGAGCTGCCTCAGGCTGT
 CGCTGGCCGTGGCAACATGCGGGCCAGCAGAGTGCAGTGCAGGCTCACCGAGATCGGCCCGGGATGACA
 CTGCAGCTCATCAAGTCCAGGAGGGCTCGGGGAGGGCAAAGTATGTTCCACAGTTTTGTGAGCAAGA
 CGGAGGAGGAGCTGCAGGCCATCCTGGAAGCAAGGAGAAGAAGTGCAGGCTGAAGGCGCAGAGGACGGC
 CCAGCAGGCCAGAATGTGCAGCGCAAGCAGGAGCAGCGGGAGGCCACAGAAAGAAGAGCCTGGAGGGC
 ATGAAGAAGGCACGGGTGGGGGTAGTGATGAAGAGGCTCTGGGATCCCTTCAAGGACGGCGAGCCTGG
 AGTTGGGTGAGGACGATGATGAACAGGAAGATGATGACATCGAGTATTTCTGCCAGGCGGTGGCCAGGC
 GCCCAGTGAGGACCTGTTCCCGAGGCCAAGCAGAAACGGCTTGCCAAGTCTCCAGGGCGGAAGCGGAAG
 CGGTGGGAAATGATCGAGGCAGGGTGCCTTTGTGACCAGAAGTTTCCAAGCAAGGACAAGTCCC
 AGGGAGCCAGGTGCAAGTCTGCCCTGCCAACTTCTTGGCAGCTGCCAGCACAACCTCAGTGGGTTC
 CAGGGGACTTCTGTGGCCATACTGGTGGTTGAGTTCTGGTGGCCGTGGCCAGCAATGGCCTGGCC
 TGTACCGTTTCCAGCATCCGGAAGCAGCGCCATGGCACCCCGCGTGGTCTTCTGTCCAGCTGGCAGT
 CAGCGACCTGCTCGCC

ACGCGTACGCGGCCGCTCGAGCAGAACTCATCTCAGAAGAGGATCTGGCAGCAAATGATATCTGGATT
 ACAAGGATGACGACGATAAGGTTTAA

Protein Sequence:

>RC231294 representing NM_001198690
 Red=Cloning site Green=Tags(s)

MGQSGRSRHHQKRARAQAQLRNLEAYAANPHSFVTRGCTGRNIRQLSLDVRVMEPLTASRLQVRKKNLSL
 KDCVAVAGPLGVTHFLILSKTETNVYFKLMRLPGGPTLTFQVKKYSYLRDVVSSLRHRMHEQQFAHPPL
 LVLNSFGPHGMHVKLMATMFQNLFPSINVHKVNLNTIKRCLLIDYNPDSQELDFRHYSIKVVPVGSARGM
 KKLLEKQEPNMSRLQDISELLATGAGLSESEAEPDGDHNI TELPQAVAGRGNMRAQQSAVRLTEIGPRMT
 LQLIKVQEGVGEKVMFHSFVSKTEELQAI LEAKEKLRLLKAQRQAQQANVQRKQEQREAHKKSLEG
 MKKARVGGSDDEEASGIPSRASLELGEDDDEQEDDDIEYFCQAVGEAPSEDLPFEAKQKRLAKSPGRKRR
 RWEMDRGRRLCDQKFKTKDKSQGAQVPSPALPTSWQLPTTNSVSGRGTSCGPYWWLSSWWPWPAMAWP
 CTASASGSSAHGTPPWSSLSWQSATCSAP

TRTRPLEQKLISEEDLAANDILDYKDDDDKV

Chromatograms:

https://cdn.origene.com/chromatograms/mk8065_b10.zip

Restriction Sites:

Sgfl-MluI

Cloning Scheme:


ACCN: NM_001198690

ORF Size: 1560 bp

OTI Disclaimer: The molecular sequence of this clone aligns with the gene accession number as a point of reference only. However, individual transcript sequences of the same gene can differ through naturally occurring variations (e.g. polymorphisms), each with its own valid existence. This clone is substantially in agreement with the reference, but a complete review of all prevailing variants is recommended prior to use. [More info](#)

OTI Annotation: This clone was engineered to express the complete ORF with an expression tag. Expression varies depending on the nature of the gene.

Components: The ORF clone is ion-exchange column purified and shipped in a 2D barcoded Matrix tube containing 10ug of transfection-ready, dried plasmid DNA (reconstitute with 100 ul of water).

- Reconstitution Method:**
1. Centrifuge at 5,000xg for 5min.
 2. Carefully open the tube and add 100ul of sterile water to dissolve the DNA.
 3. Close the tube and incubate for 10 minutes at room temperature.
 4. Briefly vortex the tube and then do a quick spin (less than 5000xg) to concentrate the liquid at the bottom.
 5. Store the suspended plasmid at -20°C. The DNA is stable for at least one year from date of shipping when stored at -20°C.

RefSeq: [NM_001198690.2](#)

RefSeq ORF: 1563 bp

Locus ID: 692312

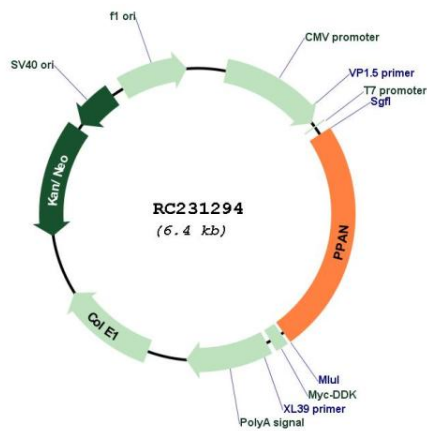
Cytogenetics: 19p13.2

Protein Families: Stem cell - Pluripotency, Transmembrane

MW: 58.6 kDa

Gene Summary:

This locus represents naturally occurring read-through transcription between the adjacent PPAN and P2RY11 genes. Alternative splicing results in two transcript variants, one of which encodes a fusion protein that shares sequence identity with each individual gene product. This transcript is found to be ubiquitously expressed and is up-regulated by agents inducing granulocytic differentiation. However, its functional significance in vivo remains unclear. [provided by RefSeq, Nov 2010]

Product images:

Circular map for RC231294