

Product datasheet for **RC231285**

GTPBP3 (NM_001195422) Human Tagged ORF Clone

Product data:

Product Type:	Expression Plasmids
Product Name:	GTPBP3 (NM_001195422) Human Tagged ORF Clone
Tag:	Myc-DDK
Symbol:	GTPBP3
Synonyms:	COXPD23; GTPBG3; MSS1; MTGP1; THDF1
Mammalian Cell Selection:	Neomycin
Vector:	pCMV6-Entry (PS100001)
E. coli Selection:	Kanamycin (25 ug/mL)



[View online »](#)

ORF Nucleotide Sequence:

>RC231285 representing NM_001195422
 Red=Cloning site Blue=ORF Green=Tags(s)

TTTTGTAATACGACTCACTATAGGGCGGCCGGGAATTCGTCGACTGGATCCGGTACCGAGGAGATCTGCC
 GCC**CGGATCGCC**

ATGGTGCATTCTCCAACCTGTCCCACCCATGCTTTCTTCTGGTCCCCGCCTCGGAGCCTCAGTTTCCCC
 ATCTGCAAACCTCCGACCTGGAGACGCTGTTTGGAAATGTGAGATGGGCATTGTGCACGCCCGGAGCAG
 CGGCGCACAGCCCCGGCTCCGGCGCCACCATCTTCGCGCTAAGCTCTGGCCAAGGCGCTGCGGCATC
 GCAGTGATCCGGACCAGCGGCCCGCCAGCGGCCACGCCCTCCGAATTCTCACAGCACCCCGAGACCTGC
 CCCTTGCTCGCCAGCCAGCCTGCGCCTGCTCAGCGATCCCCGCTCCGGGAGCCTCTGGACCGCGCACT
 GGTGCTCTGGTCCAGGTCCCCAGAGTTTACCAGGTGAGGACTGCGTGGAGTTCCACGTGCATGGAGGC
 CCGGCAGTGGTGAGCGCGTCTGCAGGCCCTGGGCAGCGTGCCAGGGCTTCGACCGCGGAGGCAGGGC
 AGTTCACCAGACGGCGTTCCCAATGGGAAGCTGAACCTGACCGAAGTGGAGGGCTGGCGACCTTAT
 CCACGCGAAACAGAGGCGCAGCGCGGCAGGCCCTCAGGCAGCTGGACGGAGAGCTGGGCCACCTCTGC
 CGTGGCTGGGCCGAGACCTCACAAAGCTCTGGCCCACGTGGAGGCCTATATCGATTTCCGCGAGGATG
 ACAACCTGGAGGAGGGGTCTGGAGCAAGCCGACATCGAAGTACGGGCACTGCAGGTGGCCCTGGGTGC
 ACATCTACGAGATGCCAGGCGCGGCAGAGGCTCCGCTCAGGGGTGCACGTAGTGGTCACTGGACCCCC
 AATGCGGGCAAGAGCAGCCTAGTGAACCTGCTCAGTCGGAAGCCTGTGTCCATCGTGTCCCCGGAGCCAG
 GGACACCCGTGACGTGCTGGAGACCCAGTCGACCTGGCCGATTTCTGTGCTGCTGAGCGACACGGC
 TGGGTTGCGGGAGGGCGTGGGCCCCGTGGAGCAGGAGGGCGTCCGGCGCGCCCGGAGAGGCTAGAGCAG
 GCTGACCTCATTCTGGCCATGCTGGATGCTTCTGACCTGGCCTCTCCCTCCAGTTGCAACTTCTGGCCA
 CCGTCGTAGCCTCTGTGGAGCCAGACCCCAAGTACAGCAGCCAGCGCCTCCTGGTGTGCAACAA
 GTCGGACCTGCTGTCCCGGAGGGCCAGGTCCCGGTCTGACCTGCCCGCACCTGCTGCTGTCTCTGT
 CTGACGGGAGAGGGGCTGGACGGCTCCTGGAGCGCTGAGGAAGGAGCTAGCTGCAAGTGTGGGGACC
 CGTCCACAGATCCCCGCTGCTGACCCGAGCAAGGCACCAGCACCTCCAGGGTTGCCTGGATGCCCT
 CGGCCACTACAAGCAGTCAAAGACCTGGCCCTGGCGGCAGAGCGCTGCGGGTGGCCCGGGTACCTG
 ACCCGGCTCACAGGTGGAGGGGTACCGAGGAGATCCTGGACATCATCTCCAGGACTTCTGTGTGGCA
 AG

ACGCGTACGCGGCCGCTCGAGCAGAACTCATCTCAGAAGAGGATCTGGCAGCAAATGATATCCTGGATT
 ACAAGGATGACGACGATAAGGTTTAA

Protein Sequence:

>RC231285 representing NM_001195422
 Red=Cloning site Green=Tags(s)

MVHSPTCPHPCFLLVPASEPQFPHLQTPDPGDAVWVNRWALCTRRSSGAPAPGSGATIFALSSGQGRCCI
 AVIRTSGPASGHALRILTAPRDLPLARHASLRLLSDPRSGEPLDRALVLFPGPQSFTGEDCVEFHVHGG
 PAVVSGVLQALGSVPGLRPAEAGEFTRRAFANGKLNLEVEGLADLIHAETEAQRRQALRQLDGELGHL
 RGWAETLTKALAHVEAYIDFGEDDNLEEGVLEQADIEVRALQVALGAHLRDARRGQRLRSVHVVTGPP
 NAGKSSLVNLRSKPVSIVSPEPGTTRDVLETPVDLAGFPVLLSDTAGLREGVGPVEQEGVRRARERLEQ
 ADLILAMLDAADLASSPSCNFLTAVVASVGAQSPSDSSQRLLLVLNKSLLSPEGPGPDLPPHLLSC
 LTGEGLDLLEALRKELAAVCGDPSTDPPLLTRARHQHHLQGCLDALGHYKQSKDLALAAEALRVARGHL
 TRLTGGGGTEEILDIIIFQDFCVGK

TRTRPLEQKLISEEDLAANDILDYKDDDDKV

Chromatograms:

https://cdn.origene.com/chromatograms/mk8064_e05.zip

Restriction Sites:

Sgfl-MluI

Cloning Scheme:


ACCN: NM_001195422

ORF Size: 1542 bp

OTI Disclaimer: The molecular sequence of this clone aligns with the gene accession number as a point of reference only. However, individual transcript sequences of the same gene can differ through naturally occurring variations (e.g. polymorphisms), each with its own valid existence. This clone is substantially in agreement with the reference, but a complete review of all prevailing variants is recommended prior to use. [More info](#)

OTI Annotation: This clone was engineered to express the complete ORF with an expression tag. Expression varies depending on the nature of the gene.

Components: The ORF clone is ion-exchange column purified and shipped in a 2D barcoded Matrix tube containing 10ug of transfection-ready, dried plasmid DNA (reconstitute with 100 ul of water).

Reconstitution Method:

1. Centrifuge at 5,000xg for 5min.
2. Carefully open the tube and add 100ul of sterile water to dissolve the DNA.
3. Close the tube and incubate for 10 minutes at room temperature.
4. Briefly vortex the tube and then do a quick spin (less than 5000xg) to concentrate the liquid at the bottom.
5. Store the suspended plasmid at -20°C. The DNA is stable for at least one year from date of shipping when stored at -20°C.

RefSeq: [NM_001195422.1](#), [NP_001182351.1](#)

RefSeq ORF: 1545 bp

Locus ID: 84705

UniProt ID: [Q969Y2](#)

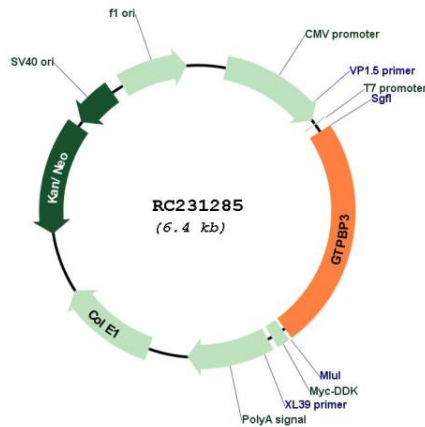
Cytogenetics: 19p13.11

MW: 54.9 kDa

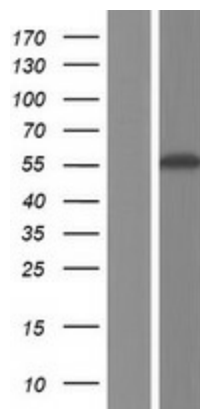
Gene Summary:

This locus encodes a GTP-binding protein. The encoded protein is localized to the mitochondria and may play a role in mitochondrial tRNA modification. Polymorphisms at this locus may be associated with severity of aminoglycoside-induced deafness, a disease associated with a mutation in the 12S rRNA. Alternatively spliced transcript variants encoding different isoforms have been described. [provided by RefSeq, Sep 2010]

Product images:



Circular map for RC231285



Western blot validation of overexpression lysate (Cat# [LY434284]) using anti-DDK antibody (Cat# [TA50011-100]). Left: Cell lysates from untransfected HEK293T cells; Right: Cell lysates from HEK293T cells transfected with RC231285 using transfection reagent MegaTran 2.0 (Cat# [TT210002]).