

Product datasheet for **RC231283**

SLC6A13 (NM_001190997) Human Tagged ORF Clone

Product data:

Product Type:	Expression Plasmids
Product Name:	SLC6A13 (NM_001190997) Human Tagged ORF Clone
Tag:	Myc-DDK
Symbol:	SLC6A13
Synonyms:	GAT-2; GAT2; GAT3
Mammalian Cell Selection:	Neomycin
Vector:	pCMV6-Entry (PS100001)
E. coli Selection:	Kanamycin (25 ug/mL)



[View online »](#)

ORF Nucleotide Sequence:

>RC231283 representing NM_001190997
 Red=Cloning site Blue=ORF Green=Tags(s)

TTTTGTAATACGACTCACTATAGGGCGGCCGGAATTCGTCGACTGGATCCGGTACCGAGGAGATCTGCC
 GCC**CGGATCGCC**

ATGGATAGCAGGGTCTCAGGCACAACAGTAATGGAGAGACAAAACCAGTGTATCCAGTCATGGAAAAGA
 AGGAGGAAGATGGCACCCCTGGAGCGGGGCACTGGAAACAACAAGATGGAGTTTGTGCTGTAGTGGCTGG
 GGAGATCATTGGCTTAGGCAACGCTCTGGAGTTTCCCTATCTCTGCTACAAAAATGGGGGAGAACACTGT
 ATGGAGTTCAGAAAGACCAACGGCTCCCTGAATGGTACCTCTGAGAATGCCACCTCTCTGTATCGAGT
 TCTGGGAGCGGGCTTGAAGATCTCTGATGGGATCCAGCACCTGGGGCCCTGCGCTGGGAGCTGGC
 TCTGTGCCTCTGCTGGCTGGTCATCTGCTACTTCTGCATCTGGAAGGGGGTGAAGTCCACAGGCAAG
 GTGGTGTACTTACGGCCACATTTCTTACCTCATGCTGGTGGTCTGTTAATTCGAGGGGTGACGTTGC
 CTGGGACAGCCAAGGAATTCAGTTTACCTGTACCCAAACCTCACGCGTCTGTGGGATCCCCAGGTGTG
 GATGGATGCAGGCACCCAGATATTTCTTCTCTGCCATCTGTCTGGGTGCCTGACAGCCCTGGGCAGC
 TACAACAAGTACCACAACAAGTGTACAGGGACTGCATCGCCCTCTGCTTCTCAACAGCGGCACACAGCT
 TTGTGGCCGGCTTTGCCATCTTCTCCATCTGGGCTTCATGTCTCAGGAGCAGGGGGTGGCCATTTCTGA
 GGTGGCCGAGTACGGCCCTGGCCTGGCTTTTCATCGCTTACCCGCGGGCTGTGGTGTGCTGCCCTTCTCT
 CCTCTCTGGGCTGCTGTTTCTTCTTATGGTCTGTTCTCTGGGACTGGATAGCCAGTTTGTGTGTGAG
 AAAGCCTGGTGACAGCGCTGGTGGACATGTACCCTCACGTGTTCCGCAAGAAGAACCAGGAGGAAGTCT
 CATCCTTGGAGTATCTGTCTCTCTTCTTGTGGGCTGATCATGCTCACAGAGGGCGGAATGTACGTG
 TTCCAGCTCTTGGACTACTATGCGGCCAGTGGCATGTGCCTCTGTTCTGTTGGCCATCTTCGAGTCCCTCT
 GTGTGGCTTGGTTTACGGAGCCAAGCGCTTCTACGACAACATCGAAGACATGATTGGGTACAGGCCATG
 GCCTCTTATCAAATACTGTTGGCTCTTCTCACACCAGCTGTGTGCACAGCCACCTTTCTCTTCTCCTG
 ATAAAGTACACTCCGCTGACCTACAACAAGAAGTACACGTACCCGTGGTGGGGCGATGCCCTGGGCTGGC
 TCCTGGCTCTGTCTCCATGGTCTGCATTCTGCTGGAGCCTCTACAGACTCGGAACCCCTCAAGGGCCC
 CTTTCAGAGAGAGAATCCGTGAGCTCATGTGCCAGCCGAGGACCTGCCCCAGCGGAACCCAGCAGGACCC
 TCGGCTCCCGCCACCCAGGACCTCACTGCTCAGACTCACAGAGCTAGAGTCTCACTGC

AG**CGGACCG**ACGCGTACGCGGCCGCTCGAGCAGAAACTCATCTCAGAAGAGGATCTGGCAGCAAATGATATCC
 TGGATTACAAGGATGACGACGATAAGGTTTAA

Protein Sequence:

>RC231283 representing NM_001190997
 Red=Cloning site Green=Tags(s)

MDSRVSGTTSNGETKPVYPMKKEEDGTLERGHWNKMEFVLSVAGEIIGLGNVWRFYLYCYKNGGEHC
 MEFQKNGSLNGTSENATSPVIEFWERRVLKISDGIQHLGALRWELALCLLLAWVICYFCIWKGVKSTGK
 VVYFTATFPYLMLVLLIRGVTLPGAAQGIQFYLYPNLTRLWDPQVWMDAGTQIFFSFAICLGCLTALGS
 YNKYHNNCYRDCIALCFLNSGTSFVAGFAIFSILGFMSQEQGVPISEVAESGPGLAFIAYPRAVVMLPFS
 PLWACCFMMLVLLGLDSQFVCVESLVTALVDMYPHVFRKKNRREVLILGVSVVSFLVGLIMLTEGGMV
 FQLFDYYAASGMCLLFVAIFESLCVAWVYGAARFYDNIEMIGYRPWPLIKYCWLFLLTPAVCTATFLFSL
 IKYTPLTYNKYTYPPWGDALGWLALSSMVCIPAWSLYRLGTLKGPFRERIRQLMCPAEDLPQRNPAGP
 SAPATPRTSLLRLTELESHC

SGPTRRRLE**QKLI**SEEDLAANDILDYKDDDDK**V**

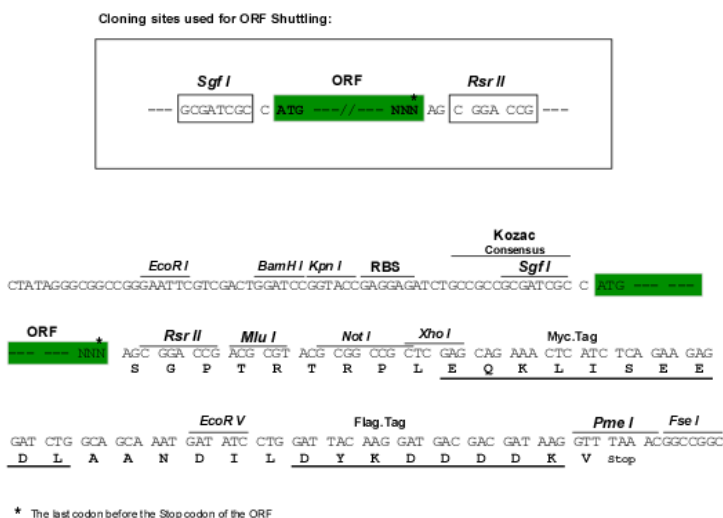
Chromatograms:

https://cdn.origene.com/chromatograms/ja1408_g10.zip

Restriction Sites:

Sgfl-RsrII

Cloning Scheme:



ACCN: NM_001190997

ORF Size: 1530 bp

OTI Disclaimer: The molecular sequence of this clone aligns with the gene accession number as a point of reference only. However, individual transcript sequences of the same gene can differ through naturally occurring variations (e.g. polymorphisms), each with its own valid existence. This clone is substantially in agreement with the reference, but a complete review of all prevailing variants is recommended prior to use. [More info](#)

OTI Annotation: This clone was engineered to express the complete ORF with an expression tag. Expression varies depending on the nature of the gene.

Components: The ORF clone is ion-exchange column purified and shipped in a 2D barcoded Matrix tube containing 10ug of transfection-ready, dried plasmid DNA (reconstitute with 100 ul of water).

- Reconstitution Method:
1. Centrifuge at 5,000xg for 5min.
 2. Carefully open the tube and add 100ul of sterile water to dissolve the DNA.
 3. Close the tube and incubate for 10 minutes at room temperature.
 4. Briefly vortex the tube and then do a quick spin (less than 5000xg) to concentrate the liquid at the bottom.
 5. Store the suspended plasmid at -20°C. The DNA is stable for at least one year from date of shipping when stored at -20°C.

RefSeq: [NM_001190997.2](#)

RefSeq ORF: 1533 bp

Locus ID: 6540

UniProt ID: [Q9NSD5](#)

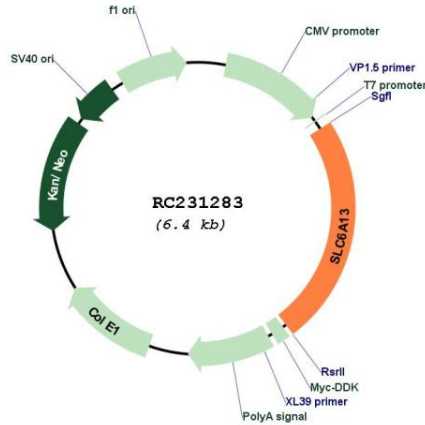
Cytogenetics: 12p13.33

Protein Families: Druggable Genome, Transmembrane

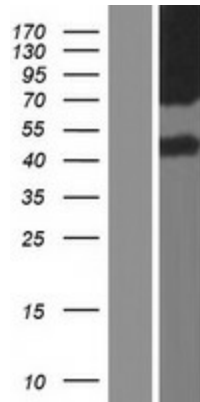
MW: 58 kDa

Gene Summary: Sodium-dependent GABA and taurine transporter. In presynaptic terminals, regulates GABA signaling termination through GABA uptake. May also be involved in beta-alanine transport. [UniProtKB/Swiss-Prot Function]

Product images:



Circular map for RC231283



Western blot validation of overexpression lysate (Cat# [LY434282]) using anti-DDK antibody (Cat# [TA50011-100]). Left: Cell lysates from untransfected HEK293T cells; Right: Cell lysates from HEK293T cells transfected with RC231283 using transfection reagent MegaTran 2.0 (Cat# [TT210002]).