

Product datasheet for **RC231278**

Sohlh2 (CCDC169-SOHLH2) (NM_001198910) Human Tagged ORF Clone

Product data:

Product Type:	Expression Plasmids
Product Name:	Sohlh2 (CCDC169-SOHLH2) (NM_001198910) Human Tagged ORF Clone
Tag:	Myc-DDK
Symbol:	Sohlh2
Synonyms:	C13orf38-SOHLH2; SOHLH2; TEB1
Mammalian Cell Selection:	Neomycin
Vector:	pCMV6-Entry (PS100001)
E. coli Selection:	Kanamycin (25 ug/mL)



[View online »](#)

ORF Nucleotide Sequence:

>RC231278 representing NM_001198910
 Red=Cloning site Blue=ORF Green=Tags(s)

TTTTGTAATACGACTCACTATAGGGCGGCCGGAATTCGTCGACTGGATCCGGTACCGAGGAGATCTGCC
 GCC**GCGATCGCC**

ATGGAACCTCTCAGGAATCCTTAAACACATTACTTAAACAGCTAGAAGAAGAAAAGAAGACTCTTGAAA
 GTCAAGTGAAATACTATGCACTTAAACTGGAACAAGAATCAAAGGCTTACCAGAAGATCAACAATGAACG
 CCGTACATACCTAGCTGAAATGTCTCAGGGTCTGGTTTACATCAAGTTTCTAAAAGGCAACAGGTGGAT
 CAACTGCCTAGGATGCAAGAGAATCTAGTGAAAACCTCCTCTTAAAAGAAGAATTGGACCTTTAAAGG
 CAAAAATAGACATCTTATTAGTTGGAGATGTCCTGTGGGCTACCTGGCTGATACTGTACAGAACTATT
 TGCAAACATAGCAGAAGTACCATCACCATCAGTGACACGAAGGAGGCAGCAGCGCTTTGGATGATTGC
 ATATTCAACATGGTTCTCTTGAAGTGCCTTCTCACTAAGTGCCGAGGAGCTGGAAGCCATCAAGTTAA
 TTAGATTTGGCAAAAAGAAAAATACACATTCAGTGTGTTGTTTTATAATCCCTGAAAATTTAAAGTTG
 TATTTGAGGCATGGAATGGATATTGCTTAACTGAACCACTGACAATGGAAAAATGAGTAATGTGGTA
 AAATACTGGACAACATGTCCCTCAAACACTGTTAAGACTGAAAACGCAACTGGGCCCTGAAGAACTTGGAT
 TGCCCTGCAGAGGTCTACAGCGAACCTGGGATATTTTCTACTGATCTATTTGCTGCTCTGAATC
 TTTAAGGAATGGCAATGGGCTTGAATTAATGCTTCGTTGTCAGAGTTCGAGAAAAACAAAAAGATCTCT
 CTTCTTCAATCAAGCAAGGAAAACTAAGAAGGAAAAGAATCAAAATTGCTGTGAGCAGCTGCGTACTC
 TCTTGCCGTATGTAAAAGGGAGAAAAGATGATGCGGCTCAGTCTTGAGGCAACAGTTGATTATGTGAA
 ATATATCCGGGAGAAAATCTCTCCAGCGTTATGGCCAGATTACAGAAGCACTCAGAGCAACATGAGG
 TTTTGTAAAGAAACAACAACACCCATTGAGCTGTCTCTCCAGGCACTGCATGGCACAGCGGAAAAACA
 GTGTGATGACACTTACTCCCTGAGAGAGGGCTCCAATTCCTGACTAATACGTGCTGGAATGGGTGCTC
 CACTCCTGATGCAGAGAGCTCCTTGGATGAAGCTGTGAGAGTTCATCAAGCTCCGCTCAGAGAATGCT
 ATTGGTATCCATATAAACTCACATTTCCAGTGACGCGTGTCTCTGAATTCCTTGCACTACTGTGAGAT
 ATTATTCTAAAGTACCCCTTCTACGATGCAACTGCTGTAACAAATCAGAACATTTCAATTCATTTACC
 TTCAGCCATGCCCGGTCTCAAAGCTTCTCCCTCGGCACTGCACCTCTGGGTTGGGCCAGAGCTGCACT
 ACACATCCCAACTGTCTGCAACAGTTTTGGCGTAT

ACGCGTACGCGGCCGCTCGAGCAGAACTCATCTCAGAAGAGGATCTGGCAGCAATGATATCTGGATT
 ACAAGGATGACGACGATAAGGTTTAA

Protein Sequence:

>RC231278 representing NM_001198910
 Red=Cloning site Green=Tags(s)

METLQESLNTLLKQLEEEKKTLESQVKYYALKLEQESKAYQKINNERRTYLAEMSQGSLHQVSKRQQVD
 QLPRMQENLVKTLKLEELDPLKAKIDILLVGDVTGVLADTVQKLFANIAEVTITISDTKEAALLDDC
 IFNMVLLKVPSSLSAELEAIKLRFGKKKNTSLFVFIIPENFKGCISGHGMDIALTEPLTMEKMSNVV
 KYWTTCPSTVKTENATGPEELGLPLQRSYSEHLGYFPTDLFACSESLRNGNGLELNASLSEFEKNNKIS
 LLHSSKEKLRERIKYCCQLRTLTPYVKGRKNDAAASVLEATVDYVYKIREKISPAVMAQITEALQSNMR
 FCKKQQTPIELSLPGTVMAQRENSVMSTYSRPERGLQFLTNTCWNGCSTPDAESSLDEAVRVPSSASENA
 IGDYPYKTHISSAALSLSLHTVRYYSKVTSPYDATAVTNQNISIHLPSPMPVSKLLPRHCTSGLGQTCT
 THPNCLQQFWAY

TRTRPLEQKLISEEDLAANDILDYKDDDDKV

Chromatograms:

https://cdn.origene.com/chromatograms/ja1382_e08.zip

Restriction Sites:

Sgfl-Mlul

Cloning Scheme:



ACCN: NM_001198910

ORF Size: 1506 bp

OTI Disclaimer: The molecular sequence of this clone aligns with the gene accession number as a point of reference only. However, individual transcript sequences of the same gene can differ through naturally occurring variations (e.g. polymorphisms), each with its own valid existence. This clone is substantially in agreement with the reference, but a complete review of all prevailing variants is recommended prior to use. [More info](#)

OTI Annotation: This clone was engineered to express the complete ORF with an expression tag. Expression varies depending on the nature of the gene.

Components: The ORF clone is ion-exchange column purified and shipped in a 2D barcoded Matrix tube containing 10ug of transfection-ready, dried plasmid DNA (reconstitute with 100 ul of water).

- Reconstitution Method:
1. Centrifuge at 5,000xg for 5min.
 2. Carefully open the tube and add 100ul of sterile water to dissolve the DNA.
 3. Close the tube and incubate for 10 minutes at room temperature.
 4. Briefly vortex the tube and then do a quick spin (less than 5000xg) to concentrate the liquid at the bottom.
 5. Store the suspended plasmid at -20°C. The DNA is stable for at least one year from date of shipping when stored at -20°C.

RefSeq: [NM_001198910.2](#)

RefSeq ORF: 1509 bp

Locus ID: 100526761

UniProt ID: [Q9NX45](#)

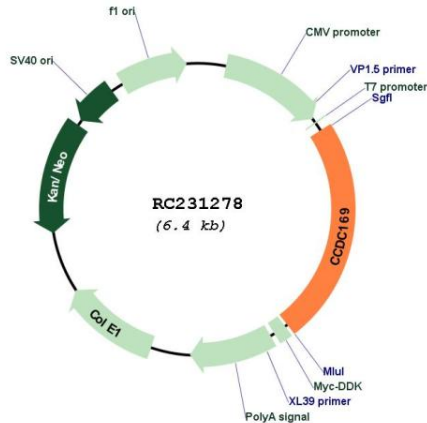
Cytogenetics: 13q13.3

MW: 56.6 kDa

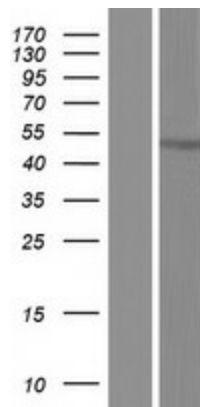
Gene Summary:

This locus represents naturally occurring read-through transcription between the neighboring C13orf38 (chromosome 13 open reading frame 38) and SOHLH2 (spermatogenesis and oogenesis specific basic helix-loop-helix 2) genes. The read-through transcript encodes a fusion protein that shares sequence identity with the products of each individual gene. [provided by RefSeq, Nov 2010]

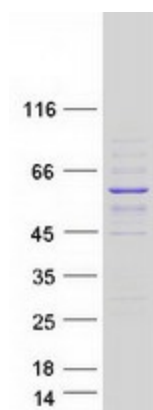
Product images:



Circular map for RC231278



Western blot validation of overexpression lysate (Cat# [LY434277]) using anti-DDK antibody (Cat# [TA50011-100]). Left: Cell lysates from untransfected HEK293T cells; Right: Cell lysates from HEK293T cells transfected with RC231278 using transfection reagent MegaTran 2.0 (Cat# [TT210002]).



Coomassie blue staining of purified CCDC169-SOHLH2 protein (Cat# [TP331278]). The protein was produced from HEK293T cells transfected with CCDC169-SOHLH2 cDNA clone (Cat# RC231278) using MegaTran 2.0 (Cat# [TT210002]).