

Product datasheet for **RC231275**

NFIB (NM_001190737) Human Tagged ORF Clone

Product data:

| | |
|---------------------------|---|
| Product Type: | Expression Plasmids |
| Product Name: | NFIB (NM_001190737) Human Tagged ORF Clone |
| Tag: | Myc-DDK |
| Symbol: | NFIB |
| Synonyms: | CTF; HMGIC/NFIB; MACID; NF-I/B; NF1-B; NFI-B; NFI-RED; NFIB2; NFIB3 |
| Mammalian Cell Selection: | Neomycin |
| Vector: | pCMV6-Entry (PS100001) |
| E. coli Selection: | Kanamycin (25 ug/mL) |



[View online »](#)

ORF Nucleotide Sequence:

>RC231275 representing NM_001190737
 Red=Cloning site Blue=ORF Green=Tags(s)

TTTTGTAATACGACTCACTATAGGGCGGCCGGGAATTCGTCGACTGGATCCGGTACCGAGGAGATCTGCC
 GCC**GCGATCGCC**

ATGATGTATTCTCCCATCTGTCTCACTCAGGATGAATTTACCCATTCATCGAGGCACTTCTCCACATG
 TCCGTGCAATTGCTTACTTGGTTCAACCTGCAGGCTCGAAAACGCAAGTACTTTAAAAAGCATGAGAA
 GCGAATGTCAAAGGATGAAGAAAGAGCAGTCAAAGATGAGCTTCTCAGTAAAAGCCTGAAATCAAACAG
 AAGTGGGCATCCAGGCTCCTTGCCAAACTGCGCAAAGATATTCGCCAGGAGTATCGAGAGGACTTTGTGC
 TCACCGTGACTGGCAAGAAGCACCCGTGCTGTGCTTATCCAATCCCGACCAGAAGGTAAGATTAGGAG
 AATCGACTGCCTGCGACAGGCAGACAAAGTCTGGCGTCTGGATCTAGTCATGGTATCCTGTTCAAAGGC
 ATCCCCTTGAAAGTACCGATGGAGAGCGGCTCATGAAATCCCCACATTGCACAAACCCAGCACTTTGTG
 TCCAGCCACATCATATCACAGTATCAGTTAAGGAGCTTGATTTGTTTTTGGCATACTACGTGCAGGAGCA
 AGATTCTGGACAATCAGGAAGTCCAAGCCACAATGATCCTGCCAAGAATCCTCCAGTTACCTTGAGGAT
 AGTTTTGTAAAATCTGGAGTCTTCAATGTATCAGAACTTGAAGAGTATCCAGAAGCGCCATAACCCAGG
 GAACTGGAGTCAACTTCCAATTGGAGAAATCCAAGCCAACCATACTATCATGACATGAACTCGGGGGT
 CAATCTTCAGAGGTCTCTGTCTTCTCCACCAAGCAGCAAAAGACCCAAAATATATCCATAGATGAAAAT
 ATGGAACCAAGTCTACAGGAGACTTTTACCCCTCCAAGTTCACCAGCTGCTGGAAGTCGAACATGGC
 ACGAAAGAGATCAAGATATGTCTTCTCCGACTACTATGAAGAAGCCTGAAAAGCCATTGTTACAGCTCTGC
 ATCTCCACAGGATTTTCCCAAGACTGAGCACTTTCCCCAGCACCACCATCCCGAATACCTGGAGTT
 GCACACAGTGTATCTCAACTCGAACTCCACCTCCACCTTACCCTTCCATTTCCAACACAAGCTATCC
 TTCCTCAGCCCCATCGAGCTACTTTTCTCATCCAACAATCAGATATCCTCCACCTGAATCCTCAGGA
 TACTCTGAAGAAGTATGTACCTTCTTATGACCCATCCAGTCCACAACCAGCCAGCCTAACGGCAGTGGT
 CAAGTAGTAGGAAAGTGCCTGGCCATTTCACTCCTGTCTTGGCACCTCTCCCATCCAGTGCAGTGC
 GACCTGTGACCCTGAGCATGACAGATACTAAACCCATCACTACATCCACTGAAGCCTACACAGCCTCAGG
 CACATCTCAAGCCAATCGATATGTGGGACTAAGCCCAAGAGACCCATCCTTCTACATCAGCAACAGTCC
 TGGTACCTGGGC

ACGCGTACGCGGCCGCTCGAGCAGAAACTCATCTCAGAAGAGGATCTGGCAGCAAATGATATCCTGGATT
 ACAAGGATGACGACGATAAGGTTTAA

Protein Sequence:

>RC231275 representing NM_001190737
 Red=Cloning site Green=Tags(s)

MMYSPICLTQDEFHPFIEALLPHVRAIAYTWFNLQARKRKYFKKHEKRMSKDEERAVKDELLSEKPEIKQ
 KWASRLLAKLRKDIRQEYREDFVLTVTGKKHPCCVLSNPDQKGIIRRIDCLRQADKVRWLDLVMVILFKG
 IPLESTDGERLMKSPHCNTPALCVQPHHITVSVKELDLFLAYYVQEQDSGQSGSPSHNDPAKNPPGYLED
 SFVKSGVFNSELVRVSRTPITQGTGVNFPIGEIPSPYHYDMNSGVNLQRSLSSPPSSKRPKTISIDEN
 MEPSPTGDFYPSPPSPAAGSRTWHERDQDMSSPTTMKKPEKPLFSSASPQDSSPRLSTFPQHHPGIPGV
 AHSVISTRTPPPSPLPFPTQAILPPAPSSYFSHPTIRYPPHLNPQDTLKNYVPSYDPSPPQTSQPNGSG
 QVVGVKVPGHFTPLAPSPHPSAVRPVTL SMTDKPITTTSTEAYTASGTSQANRYVGLSPRDP SFLHQQS
 WYLG

TRTRPLEQKLISEEDLAANDILDYKDDDDKV

Chromatograms:

https://cdn.origene.com/chromatograms/mg8006_a04.zip

Restriction Sites:

Sgfl-Mlul

Cloning Scheme:


ACCN: NM_001190737

ORF Size: 1482 bp

OTI Disclaimer: Due to the inherent nature of this plasmid, standard methods to replicate additional amounts of DNA in E. coli are highly likely to result in mutations and/or rearrangements. Therefore, OriGene does not guarantee the capability to replicate this plasmid DNA. Additional amounts of DNA can be purchased from OriGene with batch-specific, full-sequence verification at a reduced cost. Please contact our customer care team at custsupport@origene.com or by calling 301.340.3188 option 3 for pricing and delivery.

The molecular sequence of this clone aligns with the gene accession number as a point of reference only. However, individual transcript sequences of the same gene can differ through naturally occurring variations (e.g. polymorphisms), each with its own valid existence. This clone is substantially in agreement with the reference, but a complete review of all prevailing variants is recommended prior to use. [More info](#)

OTI Annotation: This clone was engineered to express the complete ORF with an expression tag. Expression varies depending on the nature of the gene.

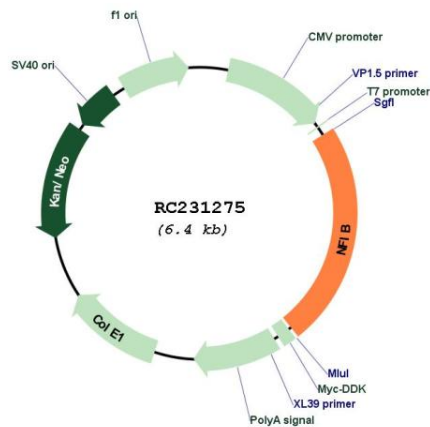
Components: The ORF clone is ion-exchange column purified and shipped in a 2D barcoded Matrix tube containing 10ug of transfection-ready, dried plasmid DNA (reconstitute with 100 ul of water).

Reconstitution Method:

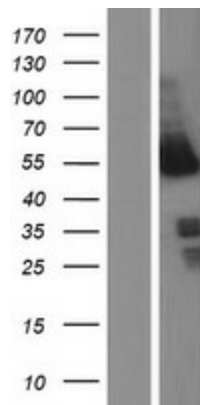
1. Centrifuge at 5,000xg for 5min.
2. Carefully open the tube and add 100ul of sterile water to dissolve the DNA.
3. Close the tube and incubate for 10 minutes at room temperature.
4. Briefly vortex the tube and then do a quick spin (less than 5000xg) to concentrate the liquid at the bottom.
5. Store the suspended plasmid at -20°C. The DNA is stable for at least one year from date of shipping when stored at -20°C.

RefSeq: [NM_001190737.2](#)
RefSeq ORF: 1485 bp
Locus ID: 4781
UniProt ID: [O00712](#)
Cytogenetics: 9p23-p22.3
Protein Families: Druggable Genome, Transcription Factors
MW: 55.6 kDa
Gene Summary: Recognizes and binds the palindromic sequence 5'-TTGGCNNNNNGCCAA-3' present in viral and cellular promoters and in the origin of replication of adenovirus type 2. These proteins are individually capable of activating transcription and replication.[UniProtKB/Swiss-Prot Function]

Product images:



Circular map for RC231275



Western blot validation of overexpression lysate (Cat# [LY434274]) using anti-DDK antibody (Cat# [TA50011-100]). Left: Cell lysates from untransfected HEK293T cells; Right: Cell lysates from HEK293T cells transfected with RC231275 using transfection reagent MegaTran 2.0 (Cat# [TT210002]).