

Product datasheet for **RC231269**

YAP1 (NM_001195044) Human Tagged ORF Clone

Product data:

Product Type:	Expression Plasmids
Product Name:	YAP1 (NM_001195044) Human Tagged ORF Clone
Tag:	Myc-DDK
Symbol:	YAP1
Synonyms:	COB1; YAP; YAP2; YAP65; YKI
Mammalian Cell Selection:	Neomycin
Vector:	pCMV6-Entry (PS100001)
E. coli Selection:	Kanamycin (25 ug/mL)



[View online »](#)

ORF Nucleotide Sequence:

>RC231269 representing NM_001195044
 Red=Cloning site Blue=ORF Green=Tags(s)

TTTTGTAATACGACTCACTATAGGGCGGCCGGGAATTCGTCGACTGGATCCGGTACCGAGGAGATCTGCC
 GCC**GCGATCGCC**

ATGGATCCCGGGCAGCAGCCGCCCTCAACCGGCCCCAGGGCCAAGGCAGCCGCTTCGCAGCCCC
 CGCAGGGGCAGGGCCCGCGTCCGGACCGGGCAACCGCACCCGCGGACCCAGGCGGCGCCGAGGC
 ACCCCCCGCCGGGCATCAGATCGTGCACGTCCGCGGGACTCGGAGACCGACCTGGAGGCGCTTCAAC
 GCCGTCATGAACCCCAAGACGGCCAACGTGCCCCAGACCGTGCCCATGAGGCTCCGGAAGCTGCCGACT
 CCTTCTCAAGCCCGGAGCCAAATCCCACTCCCGACAGGCCAGTACTGATGCAGGACTGCAGGAGC
 CCTGACTCCACAGCATGTTGAGCTCATTCTCTCCAGCTTCTCTGCAGTTGGGAGCTGTTTCTCTGGG
 AACTGACCCCACTGGAGTAGTCTCTGGCCAGCAGCTACACCCACAGCTCAGCATCTTCGACAGTCTT
 CTTTTGAGATACCTGATGATGTACCTCTGCCAGCAGTTGGGAGATGGCAAAGACATCTTCTGGTCAGAG
 ATACTTCTTAAATCACATCGATCAGACAACAACATGGCAGGACCCAGGAAGGCCATGCTGTCCCAGATG
 AACGTCACAGCCCCACCACTCCACAGTGCAGCAGAATATGATGAACTCGGCTTCAGGTCCTTCTCTG
 ATGGATGGGAACAAGCCATGACTCAGGATGGAGAAATTTACTATATAAACCATAGAACAAGACCACCTC
 TTGGTAGACCCAAGGCTTGACCCTCGTTTTGCCATGAACCAGAGAATCAGTCAGAGTGCTCCAGTGAAA
 CAGCCACCACCCCTGGCTCCCCAGAGCCACAGGGAGGCGTCA TGGGTGGCAGCAACTCCAACCAGCAGC
 AACAGATGCGACTGCAGCAACTGCAGATGGAGAAGGAGAGGCTGCGGCTGAAACAGCAAGAAGCTGCTTCG
 GCAGGAGTTAGCCCTGCGTAGCCAGTTACCAACTGGAGCAGGATGGTGGGACTCAAAATCCAGTGTCT
 TCTCCCGGATGTCTCAGGAATTGAGAACAATGACGACCAATAGCTCAGATCCTTCTTAAACAGTGGCA
 CCTACTCTCGAGATGAGAGTACAGACAGTGGACTAAGCATGAGCAGCTACAGTGTCCCTCGAACCC
 AGATGACTTCTGAAACAGTGTGGATGAGATGGATACAGGTGATACTATCAACCAAGCACCTGCCCTCA
 CAGCAGAACCCTTCCAGACTACCTTGAAGCCATTCTGGGACAAATGTGGACCTTGAACACTGGAAG
 GAGATGGAATGAACATAGAAGGAGAGGAGCTGATGCCAAGTCTGCAGGAAGCTTTGAGTTCTGACATCCT
 TAATGACATGGAGTCTGTTTTGGCTGCCACCAAGCTAGATAAAGAAAGCTTTCTTACATGGTTA

ACGCGTACGCGGCCGCTCGAGCAGAAACTCATCTCAGAAGAGGATCTGGCAGCAATGATATCCTGGATT
 ACAAGGATGACGACGATAAGGTTTAA

Protein Sequence:

>RC231269 representing NM_001195044
 Red=Cloning site Green=Tags(s)

MDPGQQPPPPQAPQGGQPPSQPPQGGPPSGPGQPAPAATQAAPQAPPAGHQIVHVRGDETDLEALFN
 AVMNPKTANVPQTVPMRLRKL PDSFFKPPPEPKSHSRQASTDAGTAGALTPQHVRHSSPASLQLGAVSPG
 TLTPTGVVSGPAATPTAQHLRQSSFEIPDDVPLPAGWEMAKTSSGQRYFLNHIDQTTTWQDPRKAMLSQM
 NVTAPTSPVQQNMNSASGPLPDGWEQAMTQDGEIYYINHNKTTSWLDPRLDPRFAMNQRI SQSAPVK
 QPPPLAPQSPQGGVMGGSNSNQQQMRLQQLQMEKERLRKQQLLQELLRQELALRSQPLTEQDGGTQNPVS
 SPGMSQELRTMTNSSDPFLNSGTYHSRDESTDSGLSMSSYSVPRTPDDFLNSVDEMDTGDTINQSTLPS
 QQNRFPDYLEAIPGTNVDLGTLEGDMNIEGEELMPSLQEALSSDILNDMESVLAATKLDKESFLTWL

TRTRPLEQK**L**I SEEDLAANDILDYKDDDDKV

Chromatograms:

https://cdn.origene.com/chromatograms/mk8065_a07.zip

Restriction Sites:

Sgfl-Mlul

Cloning Scheme:


ACCN: NM_001195044

ORF Size: 1464 bp

OTI Disclaimer: Due to the inherent nature of this plasmid, standard methods to replicate additional amounts of DNA in E. coli are highly likely to result in mutations and/or rearrangements. Therefore, OriGene does not guarantee the capability to replicate this plasmid DNA. Additional amounts of DNA can be purchased from OriGene with batch-specific, full-sequence verification at a reduced cost. Please contact our customer care team at custsupport@origene.com or by calling 301.340.3188 option 3 for pricing and delivery.

The molecular sequence of this clone aligns with the gene accession number as a point of reference only. However, individual transcript sequences of the same gene can differ through naturally occurring variations (e.g. polymorphisms), each with its own valid existence. This clone is substantially in agreement with the reference, but a complete review of all prevailing variants is recommended prior to use. [More info](#)

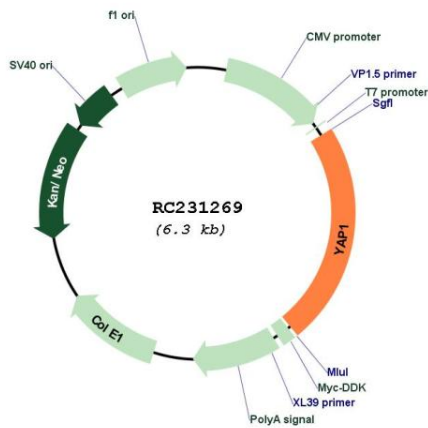
OTI Annotation: This clone was engineered to express the complete ORF with an expression tag. Expression varies depending on the nature of the gene.

Components: The ORF clone is ion-exchange column purified and shipped in a 2D barcoded Matrix tube containing 10ug of transfection-ready, dried plasmid DNA (reconstitute with 100 ul of water).

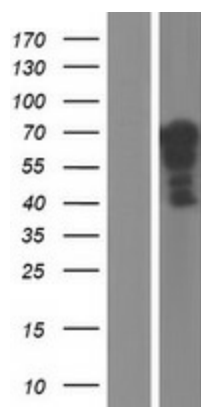
- Reconstitution Method:**
1. Centrifuge at 5,000xg for 5min.
 2. Carefully open the tube and add 100ul of sterile water to dissolve the DNA.
 3. Close the tube and incubate for 10 minutes at room temperature.
 4. Briefly vortex the tube and then do a quick spin (less than 5000xg) to concentrate the liquid at the bottom.
 5. Store the suspended plasmid at -20°C. The DNA is stable for at least one year from date of shipping when stored at -20°C.

Note:	Plasmids are not sterile. For experiments where strict sterility is required, filtration with 0.22um filter is required.
RefSeq:	NM_001195044.2
RefSeq ORF:	1467 bp
Locus ID:	10413
UniProt ID:	P46937
Cytogenetics:	11q22.1
Protein Families:	Druggable Genome
MW:	53.2 kDa
Gene Summary:	This gene encodes a downstream nuclear effector of the Hippo signaling pathway which is involved in development, growth, repair, and homeostasis. This gene is known to play a role in the development and progression of multiple cancers as a transcriptional regulator of this signaling pathway and may function as a potential target for cancer treatment. Alternative splicing results in multiple transcript variants encoding different isoforms. [provided by RefSeq, Aug 2013]

Product images:



Circular map for RC231269



Western blot validation of overexpression lysate (Cat# [LY434268]) using anti-DDK antibody (Cat# [TA50011-100]). Left: Cell lysates from untransfected HEK293T cells; Right: Cell lysates from HEK293T cells transfected with RC231269 using transfection reagent MegaTran 2.0 (Cat# [TT210002]).