

Product datasheet for **RC231265**

NCF2 (NM_001190794) Human Tagged ORF Clone

Product data:

Product Type:	Expression Plasmids
Product Name:	NCF2 (NM_001190794) Human Tagged ORF Clone
Tag:	Myc-DDK
Symbol:	NCF2
Synonyms:	NCF-2; NOXA2; P67-PHOX; P67PHOX
Mammalian Cell Selection:	Neomycin
Vector:	pCMV6-Entry (PS100001)
E. coli Selection:	Kanamycin (25 ug/mL)



[View online »](#)

ORF Nucleotide Sequence:

>RC231265 representing NM_001190794
 Red=Cloning site Blue=ORF Green=Tags(s)

TTTTGTAATACGACTCACTATAGGGCGGCCGGAATTCGTCGACTGGATCCGGTACCGAGGAGATCTGCC
 GCC**GCGATCGCC**

ATGTCCTGGTGGAGCCATCAGCCTCTGGAATGAAGGGGTGCTGGCAGCGGACAAGAAGGACTGGAAGG
 GAGCCCTGGATGCCTTCAGTGCCGTCCAGGACCCCACTCCCGATTGCTTCAACATTGGCTGCATGTA
 CACTATCCTGAAGAACATGACTGAAGCAGAGAAGGCCTTTACCAGAAGCATTAAACCGAGACAAGCACTTG
 GCAGTGGCTTACTCCAACGAGGGATGCTCTACTACCAGACAGAGAAATATGATTTGGCTATCAAAGACC
 TTAAGAAGCCTTGATTAGCTTCGAGGGAACAGCTGATAGACTATAAGATCCTGGGGCTCCAGTTCAA
 GCTGTTTGCTGTGAGAAGCAGAAGCTATATGAGCCAGTGGTATCCCTGTGGGCAAGCTGTTTCGACCA
 AATGAGAGACAAGTGGCTCAGCTGGCCAAGAAGGATTACCTAGGCAAGGCGACGGTCGTGGCATCTGTGG
 TGGATCAAGACAGTTTCTCTGGTTTGGCCCTCTGCAACCACAGGACAGCTGAGCCTCCACCCAGACCGAA
 AACCCAGAGATCTTCAGGGCTCTGGAAGGGGAGGCTCACCGTGTCTATTTGGGTTTGTGCTGAGACA
 AAAGAAGAGCTCCAGGTCATGCCAGGGAACATTGTCTTTGTCTTGAAGAAGGGCAATGATAACTGGGCCA
 CGGTCATGTTCAACGGGCGAGAAGGGCTTGTTCCTGCAACTACCTTGAACCAAGTTGAGCTGCGGATCCA
 CCCTCAGCAGCAGCCCCAGGAGGAAAGCTCTCCGAGTCCGACATCCCAGCTCCTCCTAGTTCCAAAGCC
 CCTGGAAGACCCAGCTGTACCAGGCCAGAAACAAAAAGAAGAGCCTAAGGAAGTGAAGCTCAGTGTTCC
 CCATGCCCTACACACTCAAGGTGCACTACAAGTACACGGTAGTCATGAAGACTCAGCCCGGGCTCCCCTA
 CAGCCAGTCCGGGACATGGTGTCTAAGAACTGGAGTCCGGCTGGAACACACTAAGCTGAGCTATCGG
 CCTCGGGACAGCAATGAGCTGGTGGCCCTTTTCAAGACAGCATGAAGGATGCCTGGGGCCAGGTGAAAA
 AACTGCCTGACTCTGTGGTGTGAGAACACAGTGGGTGACCAAGGCTTCCAGATGAACCAAGGAAAG
 TGA AAAAGCTGATGCTAATAACCAAGACAACAGAACCTCAGCTTAAGAAAGGCGACCAAGTGGAGGACTC
 TTCAGTTATGAGCTACCAACCAAGGACCTGGAGTTTCAAGAAAGGGGATATAATCCTGGTGTATCAA
 AGGTGAATGAAGAATGGCTGGAAGGGGAGTGCAAAGGGAAGTGGGCATTTTCCCAAAGTTTTTGTGTA
 AGACTGCGCAACTACAGATTTGGAAGCACTCGGAGAGAAGTC

ACGCGTACGCGGCCGCTCGAGCAGAAACTCATCTCAGAAGAGGATCTGGCAGCAATGATATCCTGGATT
 ACAAGGATGACGACGATAAGGTTTAA

Protein Sequence:

>RC231265 representing NM_001190794
 Red=Cloning site Green=Tags(s)

MSLV E A I S L W N E G V L A A D K K D W K G A L D A F S A V Q D P H S R I C F N I G C M Y T I L K N M T E A E K A F T R S I N R D K H L
 A V A Y F Q R G M L Y Y Q T E K Y D L A I K D L K E A L I Q L R G N Q L I D Y K I L G L Q F K L F A C E K Q K L Y E P V V I P V G K L F R P
 N E R Q V A Q L A K K D Y L G K A T V V A S V V D Q D S F S G F A P L Q P Q A A E P P P R P K T P E I F R A L E G E A H R V L F G F V P E T
 K E E L Q V M P G N I V F V L K K G N D N W A T V M F N G Q K G L V P C N Y L E P V E L R I H P Q Q P Q E E S S P Q S D I P A P P S S K A
 P G R P Q L S P G Q K Q K E E P K E V K L S V P M P Y T L K V H Y K Y T V V M K T Q P G L P Y S Q V R D M V S K K L E L R L E H T K L S Y R
 P R D S N E L V P L S E D S M K D A W G Q V K N Y C L T L W C E N T V G D Q G F P D E P K E S E K A D A N N Q T T E P Q L K K G S Q V E A L
 F S Y E A T Q P E D L E F Q E G D I I L V L S K V N E E W L E G E C K G K V G I F P K V F V E D C A T T D L E S T R E V

TRTRPLEQKLI SEEDLAANDILDYKDDDDKV

Chromatograms:

https://cdn.origene.com/chromatograms/mk8062_g05.zip

Restriction Sites:

Sgfl-Mlul

Cloning Scheme:

Cloning sites used for ORF Shutting:



* The last codon before the Stop codon of the ORF

ACCN: NM_001190794

ORF Size: 1443 bp

OTI Disclaimer: The molecular sequence of this clone aligns with the gene accession number as a point of reference only. However, individual transcript sequences of the same gene can differ through naturally occurring variations (e.g. polymorphisms), each with its own valid existence. This clone is substantially in agreement with the reference, but a complete review of all prevailing variants is recommended prior to use. [More info](#)

OTI Annotation: This clone was engineered to express the complete ORF with an expression tag. Expression varies depending on the nature of the gene.

Components: The ORF clone is ion-exchange column purified and shipped in a 2D barcoded Matrix tube containing 10ug of transfection-ready, dried plasmid DNA (reconstitute with 100 ul of water).

Reconstitution Method:

1. Centrifuge at 5,000xg for 5min.
2. Carefully open the tube and add 100ul of sterile water to dissolve the DNA.
3. Close the tube and incubate for 10 minutes at room temperature.
4. Briefly vortex the tube and then do a quick spin (less than 5000xg) to concentrate the liquid at the bottom.
5. Store the suspended plasmid at -20°C. The DNA is stable for at least one year from date of shipping when stored at -20°C.

RefSeq: [NM_001190794.1](#), [NP_001177723.1](#)
RefSeq ORF: 1446 bp

Locus ID: 4688

UniProt ID: [P19878](#)
Cytogenetics: 1q25.3

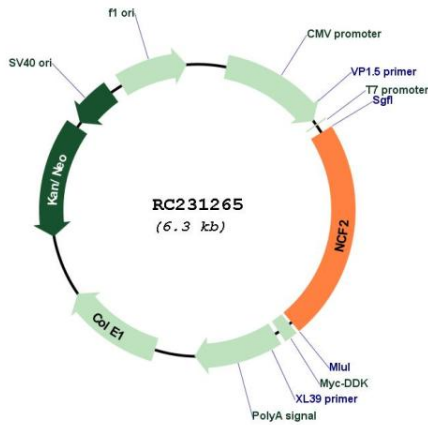
Protein Families: Druggable Genome

Protein Pathways: Leukocyte transendothelial migration

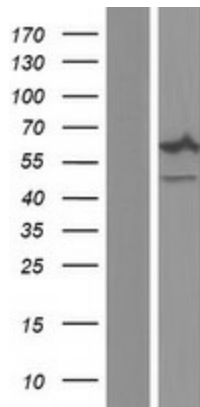
MW: 54.9 kDa

Gene Summary: This gene encodes neutrophil cytosolic factor 2, the 67-kilodalton cytosolic subunit of the multi-protein NADPH oxidase complex found in neutrophils. This oxidase produces a burst of superoxide which is delivered to the lumen of the neutrophil phagosome. Mutations in this gene, as well as in other NADPH oxidase subunits, can result in chronic granulomatous disease, a disease that causes recurrent infections by catalase-positive organisms. Alternative splicing results in multiple transcript variants encoding different isoforms. [provided by RefSeq, Jun 2010]

Product images:



Circular map for RC231265



Western blot validation of overexpression lysate (Cat# [LY434264]) using anti-DDK antibody (Cat# [TA50011-100]). Left: Cell lysates from untransfected HEK293T cells; Right: Cell lysates from HEK293T cells transfected with RC231265 using transfection reagent MegaTran 2.0 (Cat# [TT210002]).