

## Product datasheet for **RC231262**

### **TCF7L2 (NM\_001198525) Human Tagged ORF Clone**

#### **Product data:**

Product Type:	Expression Plasmids
Product Name:	TCF7L2 (NM_001198525) Human Tagged ORF Clone
Tag:	Myc-DDK
Symbol:	TCF7L2
Synonyms:	TCF-4; TCF4
Mammalian Cell Selection:	Neomycin
Vector:	pCMV6-Entry (PS100001)
E. coli Selection:	Kanamycin (25 ug/mL)



[View online »](#)

**ORF Nucleotide Sequence:**

>RC231262 representing NM\_001198525  
 Red=Cloning site Blue=ORF Green=Tags(s)

TTTTGTAATACGACTCACTATAGGGCGGCCGGAATTCGTCGACTGGATCCGGTACCGAGGAGATCTGCC  
 GCC**GCGATCGCC**

ATGCCGACGTGAACGGCGGTGGAGGGGATGACCTAGGCGCCAACGACGAACTGATTTCTTCAAAGACG  
 AGGGCGAACAGGAGGAGAAGAGCTCCGAAAACCTCTCGGCAGAGAGGGATTTAGCTGATGTCAAATCGTC  
 TCTAGTCAATGAATCAGAAACGAATCAAAACAGCTCCTCCGATTCGAGGCGGAAAGACGGCCTCCGCCCT  
 CGCTCCGAAAGTTTCCGAGACAAATCCCGGAAAGTTTGAAGAAGCGGCCAAGAGGCAAGATGGAGGGC  
 TCTTTAAGGGGCCACCGTATCCCGGCTACCCCTTCATCATGATCCCCGACCTGACGAGCCCTACCTCCC  
 CAACGGATCGCTCTCGCCACCGCCGAACTATCTCCAGATGAAATGGCCACTGCTTGTGTCCAGGCA  
 GGGAGCCTCCAGAGTAGACAAGCCCTCAAGGATGCCCGGTCCCCATCACCGGCACACATTGTCTTAACA  
 AAGTGCCAGTGGTGCAGCACCCCTCACCATGTCCACCCCTCACGCCTTTATCACGTACAGCAATGAACA  
 CTTACGCGGGAAACCCACCTCCACACTTACCAGCCGACGTAGACCCAAAACAGGAATCCACGGCCT  
 CCGCACCTCCAGATATATCCCGTATTACCCACTATCGCTGGCACCGTAGGACAAATCCCCATCCGC  
 TAGGATGGTTAGTACCACAGCAAGGTCAACCAAGTGTACCAATCACGACAGGAGGATTCAGACACCCCTA  
 CCCCACAGCTCTGACCGTCAATGCTTCCATGTCCAGCTTTCTGTCTTCTAGGTTCCCTCCCCATATGGTC  
 CCACCACATCATACGCTACACACGACGGGCATTCCGCATCCGGCCATAGTCACACCAACAGTCAAACAGG  
 AATCGTCCCAGAGTGTGTCGGCTCACTCCATAGTTCAAAGCATCAGGACTCCAAAAAGGAAGAAGAAA  
 GAAGAAGCCACATAAAGAAACCTCTTAATGCATTATGTTGTATGAAGGAAATGAGAGCAAAGGTC  
 GTAGCTGAGTGCACGTTGAAAGAAGCGCGGCCATCAACCAGATCCTTGGGCGGAGGTGGCATGCACTGT  
 CCAGAGAAGCAAGCGAAATACTACGAGCTGGCCCGAAGGAGGACAGCTTCATATGCAACTGATACCC  
 CGGCTGGTCCGCGGGATAACTATGGAAGAAGAAGAAGAGGAAAAGGACAAGCAGCCGGGAGAGACC  
 AATGAACACAGCGAATGTTTCTAAATCCTTGCCTTTCACTTCTCCGATTACAGACCTGAGCGCTCCTA  
 AGAAATGCCGAGCGCGCTTTGGCCTTGATCAACAGAATAACTGGTGCGGCCCTTGACAGTCAAATACTC  
 CAAAGAAGTGTCGGGCACTGTTCCGGCT

**ACGCGT**ACGCGGCCGCTCGAGCAGAACTCATCTCAGAAGAGGATCTGGCAGCAAATGATATCCTGGATT  
 ACAAGGATGACGACGATAAGGTTTAA

**Protein Sequence:**

>RC231262 representing NM\_001198525  
 Red=Cloning site Green=Tags(s)

MPQLNGGGDDLGANDELISFKDEGEQEEKSSSENSAERDLADVKSSLVNESETNQNSSDSEARRPPP  
 RSEsFRDKSRESLEEAARKRQDGLFKGPPYPGYPFIMIPDLTSPYLPNGSLSPARTYLMKWPLLDVQA  
 GSLQSRQALKDARSPSPAHIVSNKVPVQHPHHVHPLTPLITYSNEHFTPGNPPPHLPADVDPKTIIPRP  
 PHPPDISPYYPPLSPGTVGQIPHPLGWLVPQQGPVYPIITGGFRHPYPTALTVNASMSSFLSSRFPPHMV  
 PPHHTLHTTGIPHAIVTPTVKQESSQSDVGSLSHSSKHQDSKKEEEKKPKHIKKPLNAFMLYMKEMRAKV  
 VAECTLKESAAINQILGRRWHALSREEQAKYYELARKERQLHMQLYPGWSARDNYGKKKKRKRDKQPGET  
 NEHSECFLNPCLSLPPITDLSAPKKCRARFGLDQNNWCGPCRCKYSKEVSGTVRA

**TR**TRPLEQKLISEEDLAANDILDYKDDDDKV

**Chromatograms:**

[https://cdn.origene.com/chromatograms/mk8062\\_d09.zip](https://cdn.origene.com/chromatograms/mk8062_d09.zip)

**Restriction Sites:**

Sgfl-Mlul

**Cloning Scheme:**


**ACCN:** NM\_001198525

**ORF Size:** 1428 bp

**OTI Disclaimer:** The molecular sequence of this clone aligns with the gene accession number as a point of reference only. However, individual transcript sequences of the same gene can differ through naturally occurring variations (e.g. polymorphisms), each with its own valid existence. This clone is substantially in agreement with the reference, but a complete review of all prevailing variants is recommended prior to use. [More info](#)

**OTI Annotation:** This clone was engineered to express the complete ORF with an expression tag. Expression varies depending on the nature of the gene.

**Components:** The ORF clone is ion-exchange column purified and shipped in a 2D barcoded Matrix tube containing 10ug of transfection-ready, dried plasmid DNA (reconstitute with 100 ul of water).

**Reconstitution Method:**

1. Centrifuge at 5,000xg for 5min.
2. Carefully open the tube and add 100ul of sterile water to dissolve the DNA.
3. Close the tube and incubate for 10 minutes at room temperature.
4. Briefly vortex the tube and then do a quick spin (less than 5000xg) to concentrate the liquid at the bottom.
5. Store the suspended plasmid at -20°C. The DNA is stable for at least one year from date of shipping when stored at -20°C.

**RefSeq:** [NM\\_001198525.2](#)

**RefSeq ORF:** 1431 bp

**Locus ID:** 6934

**Cytogenetics:** 10q25.2-q25.3

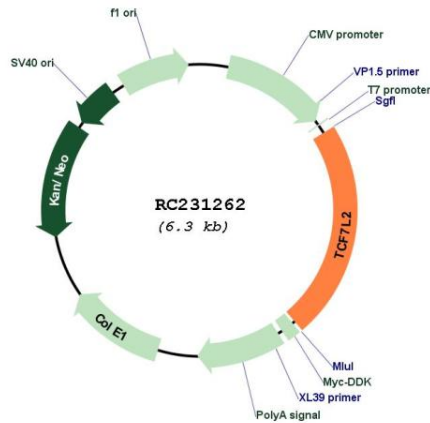
**Protein Families:** Druggable Genome, Transcription Factors

**Protein Pathways:** Acute myeloid leukemia, Adherens junction, Arrhythmogenic right ventricular cardiomyopathy (ARVC), Basal cell carcinoma, Colorectal cancer, Endometrial cancer, Melanogenesis, Pathways in cancer, Prostate cancer, Thyroid cancer, Wnt signaling pathway

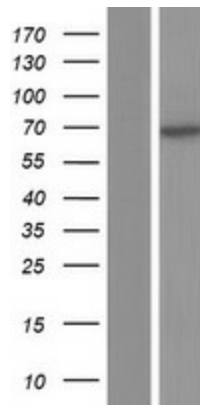
**MW:** 53.5 kDa

**Gene Summary:** This gene encodes a high mobility group (HMG) box-containing transcription factor that plays a key role in the Wnt signaling pathway. The protein has been implicated in blood glucose homeostasis. Genetic variants of this gene are associated with increased risk of type 2 diabetes. Several transcript variants encoding multiple different isoforms have been found for this gene.[provided by RefSeq, Oct 2010]

**Product images:**



Circular map for RC231262



Western blot validation of overexpression lysate (Cat# [LY434261]) using anti-DDK antibody (Cat# [TA50011-100]). Left: Cell lysates from untransfected HEK293T cells; Right: Cell lysates from HEK293T cells transfected with RC231262 using transfection reagent MegaTran 2.0 (Cat# [TT210002]).