

Product datasheet for **RC231260**

SCHIP1 (NM_001197107) Human Tagged ORF Clone

Product data:

Product Type:	Expression Plasmids
Product Name:	SCHIP1 (NM_001197107) Human Tagged ORF Clone
Tag:	Myc-DDK
Symbol:	SCHIP1
Synonyms:	SCHIP-1
Mammalian Cell Selection:	Neomycin
Vector:	pCMV6-Entry (PS100001)
E. coli Selection:	Kanamycin (25 ug/mL)



[View online »](#)

ORF Nucleotide Sequence:

>RC231260 representing NM_001197107
 Red=Cloning site Blue=ORF Green=Tags(s)

TTTTGTAATACGACTCACTATAGGGCGGCCGGGAATTCGTCGACTGGATCCGGTACCGAGGAGATCTGCC
 GCC**CGGATCGCC**

ATGGAGAGGTCGGGCGAGCGTGTACAACGTGGGACTGTGACCAGGGCAAGCACTCTGACAGTGATTACC
 GAGAGGATGGGATGGATCTAGGCAGTGACGCCGGCAGCAGCAGCAGCAGCCGCCAGTTCACAGTC
 CAACTCCACCAAAGTGACCCCTTCTCCGAGTGCAAATCTTCATCGTCGCCGGGGGCGAGCCTGGACTTG
 GTGTCTGCCCTGGAGGACTATGAGGAGCCCTCCCGGTCTACCAGAAGAAGGTGATTGATGAGTGGGCGC
 CGGAGGAGGACGGGGAGGAGGAGGAAGAGGAGGACGAGCGCACCAGCGAGGGTACCGGGATGACCGCTC
 TCCGGCCCGGAAACCGGGGACGTAAGCGCCAGGACCCGACGCGCGGGCGGGGGCAGGAGCGCCACC
 ACCGCCATGCCGCCCGGTGCCAACGGCAACCTCCACCAGCACGACCCCGAGGACCTCAGGCACAATG
 GCAACGTGGTGGTGGCTGGCCGGCCGAGCTGTTCCGGGGCCCCGCCGGCGATCCAAAAGCCCCAGCC
 GGCTGGGGGCGGCGCAGTGGCCGGCCCGGGCGCTGGGGGGCTGCTGCCTTCAGCCCCAGACGGCGGG
 ACGTGCCTCCCGAAGAGCCCCGGTGCCACCTATGGATTGGGAGGCGCTGGAGAAGCATCTGGCCGGGC
 TGCAGTTCGGGAGCAGGAGGCACAGAAAAATGAGAGAGAGTCTATCAGACAGAAGTTGGCACTTGGAAAG
 CTTCTTTGATGATGGCCAGGAATTTATACCAGCTGTAGCAAAGTGGGAAGCCAAGCCTTCTCCCGA
 CTGCAGAGTGGGATGAACCTGCAGATATGCTTTGTCAACGACAGTGGCAGTGATAAGGACAGTGTGCTG
 ATGACAGTAAGACTGAAACCAGCTTGGACACCCCTTGTCTCCCATGAGCAAACAGAGTTCCTCCTATTC
 TGATAGAGACTACTGAAGAGGAGTCTGAATCCTTGGATGACATGGACTTCCTTACAAGGCAAAAGAAA
 TTGCAAGCTGAAGCAAAATGGCCCTTGCCATGGCCAAACCAATGGCCAAATGCAAGTAGAAGTGGAGA
 AACAGAACAGGAAAAAGTCTCCCGTCGCTGATCTTCTGCCACACATGCCTCATATAAGTGAATGCTTAT
 GAAAAGAAGTTTAAAACCCACCGACTGAGAGACATGACTATTGGGCAGCTACAAGTGAATGATCAATGAT
 CTCCATCCAGATAGAAAGCTTGAATGAAGAGTTGGTCCAGCTGCTTCTCATCCGAGATGAGCTGCACA
 CAGAGCAGGATGCCATGCTGGTGGACATTGAAGACTTGACCAGACATGCTGAAAGTCAGCAGAAGCACAT
 GGCAGAGAAAAATGCCTGCAAAAG

ACGCGTACGCGGCCGCTCGAGCAGAAACTCATCTCAGAAGAGGATCTGGCAGCAAATGATATCCTGGATT
 ACAAGGATGACGACGATAAGGTTTAA

Protein Sequence:

>RC231260 representing NM_001197107
 Red=Cloning site Green=Tags(s)

MERSGQRVTTWDCDQGHSDSDYREDGMDLGSAGSSSSSRASSQSNSTKVTPCSECKSSSSPGGSLDL
 VSALEDYEEFPVYQKKVIDEWAPEEDGEEEEEDERDQRYRDDRSPAREPGDVSARTRSGGGGRSAT
 TAMP PPPV PNLHQHDPQDLRHNGNVVAGRPSCSRGPRRAIQKPQAPAGRRRSGRGPAAAGLCLQPPDGG
 TCVPEEPPVPPMDWEALEKHLAQLQFREQEAKNERESIRQKLALGSFFDDGPGIYTSCKSGKPSLSSR
 LQSGMNLQICFVNDSGSDKSDADDSKTETSLDTPLSPMSKQSSSYSDRDTTEESESLDDMDFLTRQKK
 LQAEAKMALAMAKPMKMQVEVEKQNRKSPVADLLPHMPHISECLMKRSLKPTDLRDMTIGQLQVIVND
 LHSQIESLNEELVQLLLIRDELHTEQDAMLVDIEDLTRHAESQQKHMAEKMPAK

TRTRPLEQKLISEEDLAANDILDYKDDDDKV

Chromatograms:

https://cdn.origene.com/chromatograms/mk8062_c04.zip

Restriction Sites:

SgfI-MluI

Cloning Scheme:


ACCN: NM_001197107

ORF Size: 1422 bp

OTI Disclaimer: The molecular sequence of this clone aligns with the gene accession number as a point of reference only. However, individual transcript sequences of the same gene can differ through naturally occurring variations (e.g. polymorphisms), each with its own valid existence. This clone is substantially in agreement with the reference, but a complete review of all prevailing variants is recommended prior to use. [More info](#)

OTI Annotation: This clone was engineered to express the complete ORF with an expression tag. Expression varies depending on the nature of the gene.

Components: The ORF clone is ion-exchange column purified and shipped in a 2D barcoded Matrix tube containing 10ug of transfection-ready, dried plasmid DNA (reconstitute with 100 ul of water).

Reconstitution Method:

1. Centrifuge at 5,000xg for 5min.
2. Carefully open the tube and add 100ul of sterile water to dissolve the DNA.
3. Close the tube and incubate for 10 minutes at room temperature.
4. Briefly vortex the tube and then do a quick spin (less than 5000xg) to concentrate the liquid at the bottom.
5. Store the suspended plasmid at -20°C. The DNA is stable for at least one year from date of shipping when stored at -20°C.

RefSeq: [NM_001197107.1](#), [NP_001184036.1](#)

RefSeq ORF: 1425 bp

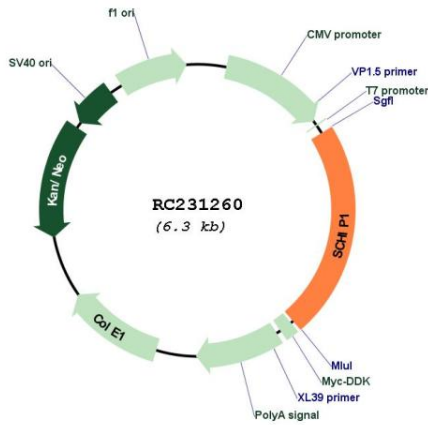
Locus ID: 29970

UniProt ID: [Q9P0W5](#)

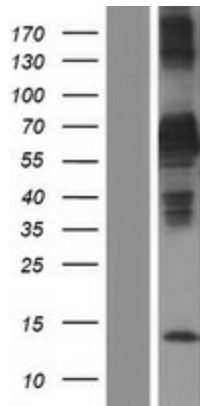
Cytogenetics: 3q25.32-q25.33

MW: 52.5 kDa

Product images:



Circular map for RC231260



Western blot validation of overexpression lysate (Cat# [LY434259]) using anti-DDK antibody (Cat# [TA50011-100]). Left: Cell lysates from untransfected HEK293T cells; Right: Cell lysates from HEK293T cells transfected with RC231260 using transfection reagent MegaTran 2.0 (Cat# [TT210002]).